



## **CONTACT INFORMATION**

Mining Records Curator  
Arizona Geological Survey  
1520 West Adams St.  
Phoenix, AZ 85007  
602-771-1601  
<http://www.azgs.az.gov>  
[inquiries@azgs.az.gov](mailto:inquiries@azgs.az.gov)

The following file is part of the

Arizona Department of Mines and Mineral Resources Mining Collection

## **ACCESS STATEMENT**

These digitized collections are accessible for purposes of education and research. We have indicated what we know about copyright and rights of privacy, publicity, or trademark. Due to the nature of archival collections, we are not always able to identify this information. We are eager to hear from any rights owners, so that we may obtain accurate information. Upon request, we will remove material from public view while we address a rights issue.

## **CONSTRAINTS STATEMENT**

The Arizona Geological Survey does not claim to control all rights for all materials in its collection. These rights include, but are not limited to: copyright, privacy rights, and cultural protection rights. The User hereby assumes all responsibility for obtaining any rights to use the material in excess of "fair use."

The Survey makes no intellectual property claims to the products created by individual authors in the manuscript collections, except when the author deeded those rights to the Survey or when those authors were employed by the State of Arizona and created intellectual products as a function of their official duties. The Survey does maintain property rights to the physical and digital representations of the works.

## **QUALITY STATEMENT**

The Arizona Geological Survey is not responsible for the accuracy of the records, information, or opinions that may be contained in the files. The Survey collects, catalogs, and archives data on mineral properties regardless of its views of the veracity or accuracy of those data.

PRINTED: 01/15/2003

ARIZONA DEPARTMENT OF MINES AND MINERAL RESOURCES AZMILS DATA

PRIMARY NAME: COPPER BASIN GROUP

ALTERNATE NAMES:

SILVER KING

0 ~~B~~ABBIT CLAIMS

WINKELMAN SILICA PROPERTY

PINAL COUNTY MILS NUMBER: 399

LOCATION: TOWNSHIP 5 S RANGE 14 E SECTION 25 QUARTER W2

LATITUDE: N 32DEG 58MIN 05SEC LONGITUDE: W 110DEG 52MIN 14SEC

TOPO MAP NAME: WINKELMAN - 7.5 MIN

29 NW 1/4

CURRENT STATUS: DEVEL DEPOSIT

32.9738 -110.8426

COMMODITY:

COPPER OXIDE

SILVER

SILICON

32° 58' 26" 110 50 37

BIBLIOGRAPHY:

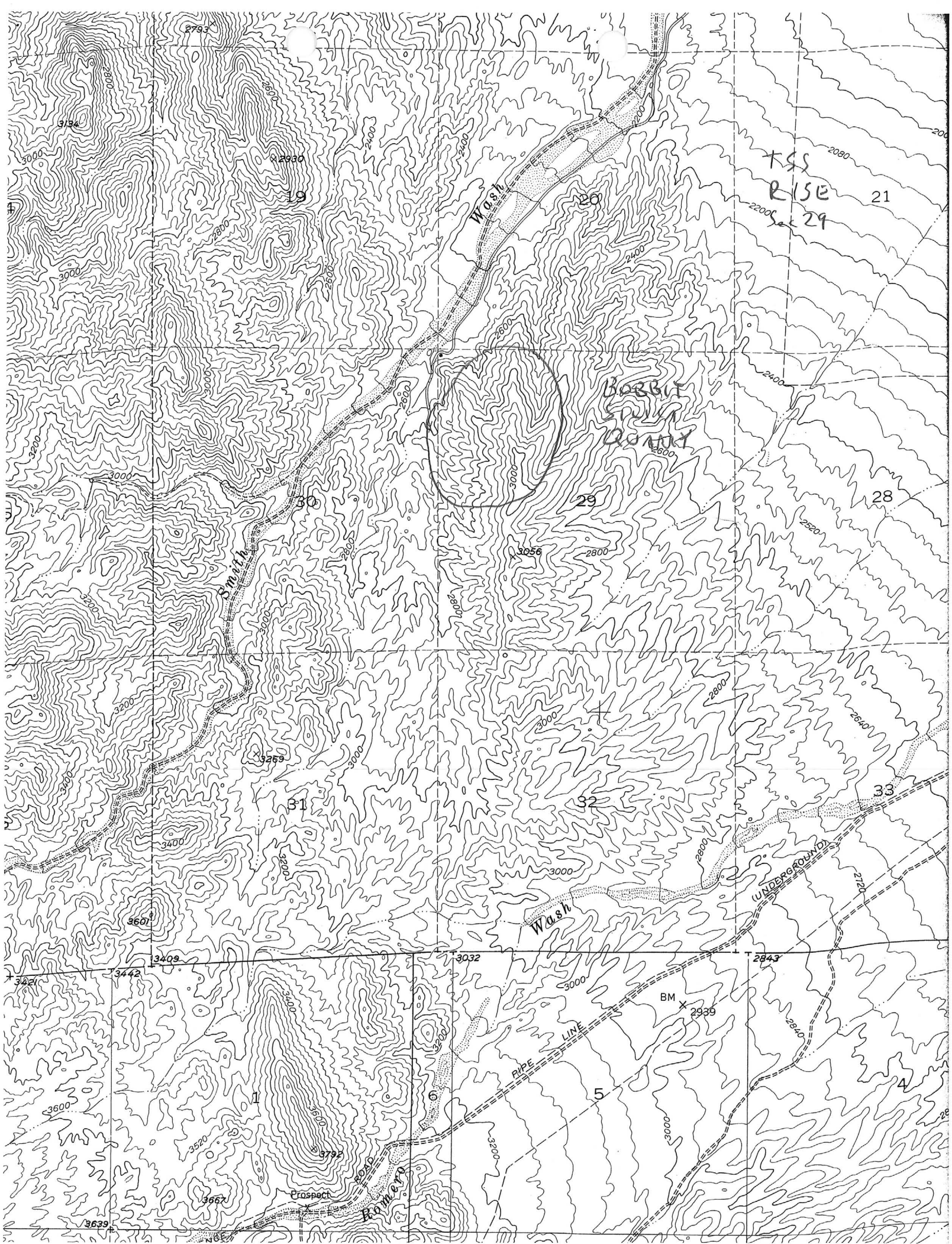
ADMMR COPPER BASIN GROUP FILE

ADMMR COPPER HILL GROUP FILE

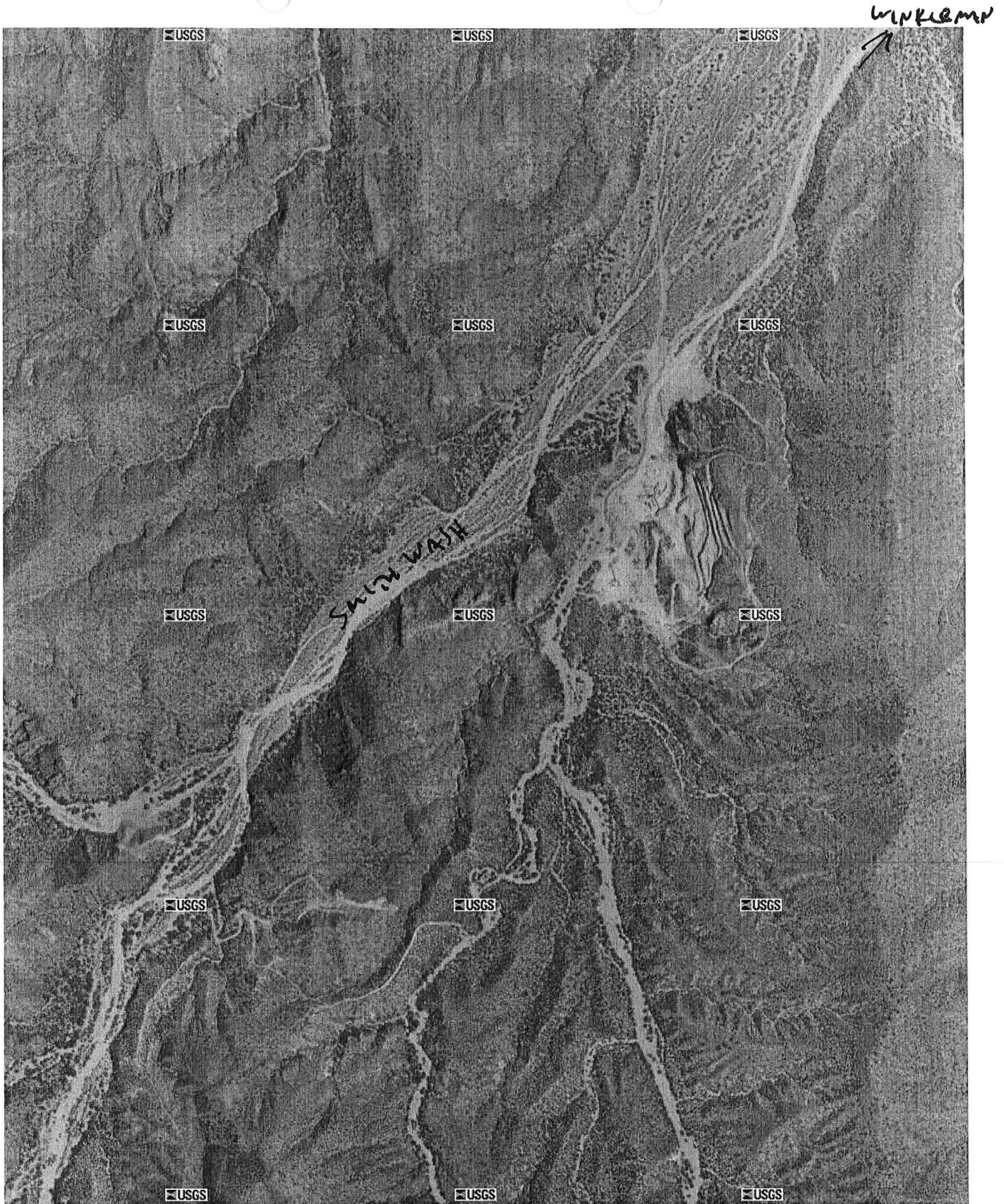
ADMMR U FILE PINAL CU50 (SILVER KING)

ELEVATORSKI, E.A., AZ. INDUSTRIAL MINERALS,

1980, P. 57







BOBBIT SILICA, PINAL

DEPARTMENT OF MINERAL RESOURCES

STATE OF ARIZONA  
FIELD ENGINEERS REPORT

Mine Copper Basin Group

Date January 21, 1960

District Crozier Peak, Pinal County

Engineer Lewis A. Smith

Subject: Conference with Joe & Albert Biddich of Winkelman, owners.

Address: General Delivery, Winkelman

Location: 2 miles NE of Crozier Peak ( S 25, T. 5 S., R. 14 E.)

Property: 6 claims (unpatented) on state land.

Work: Location work not done but planned as soon as access is re-established.

Geology: The country rock is diabase or andesite with quartz blowouts and stringers locally. The mineralized area was estimated by Joe Biddich to be 600 feet wide and 1400 - feet long. The samples show 0.5 to 1.2% copper and 0.04 silver with high iron. The quartz blowouts assay 88%  $\text{SiO}_2$ . The minerals observed in the material were cupriferous pyrite, bornite, malachite and chrysocolla. Several siliceous veins up to 2 feet wide traverse the mineralized area and according to Biddich these run better than the larger mineralized area. It is planned to do further overall testing. The mineralized area trends E-W and has a well shattered congregate fracture pattern. The rock mass dips or plunges to the south. The rock looks like diabase or a coarse andesite. A visit was impossible because of high water in the Gila River, but will be made later. ( The rock is not very reactive but the capping material observed shows a very strong pyrite tendency. This capping is not very deep and is in zone 2.)