



CONTACT INFORMATION

Mining Records Curator
Arizona Geological Survey
1520 West Adams St.
Phoenix, AZ 85007
602-771-1601
<http://www.azgs.az.gov>
inquiries@azgs.az.gov

The following file is part of the

Arizona Department of Mines and Mineral Resources Mining Collection

ACCESS STATEMENT

These digitized collections are accessible for purposes of education and research. We have indicated what we know about copyright and rights of privacy, publicity, or trademark. Due to the nature of archival collections, we are not always able to identify this information. We are eager to hear from any rights owners, so that we may obtain accurate information. Upon request, we will remove material from public view while we address a rights issue.

CONSTRAINTS STATEMENT

The Arizona Geological Survey does not claim to control all rights for all materials in its collection. These rights include, but are not limited to: copyright, privacy rights, and cultural protection rights. The User hereby assumes all responsibility for obtaining any rights to use the material in excess of "fair use."

The Survey makes no intellectual property claims to the products created by individual authors in the manuscript collections, except when the author deeded those rights to the Survey or when those authors were employed by the State of Arizona and created intellectual products as a function of their official duties. The Survey does maintain property rights to the physical and digital representations of the works.

QUALITY STATEMENT

The Arizona Geological Survey is not responsible for the accuracy of the records, information, or opinions that may be contained in the files. The Survey collects, catalogs, and archives data on mineral properties regardless of its views of the veracity or accuracy of those data.

PRINTED: 01/17/2003

ARIZONA DEPARTMENT OF MINES AND MINERAL RESOURCES AZMILS DATA

PRIMARY NAME: COPPER VAULT TUNNEL

ALTERNATE NAMES:

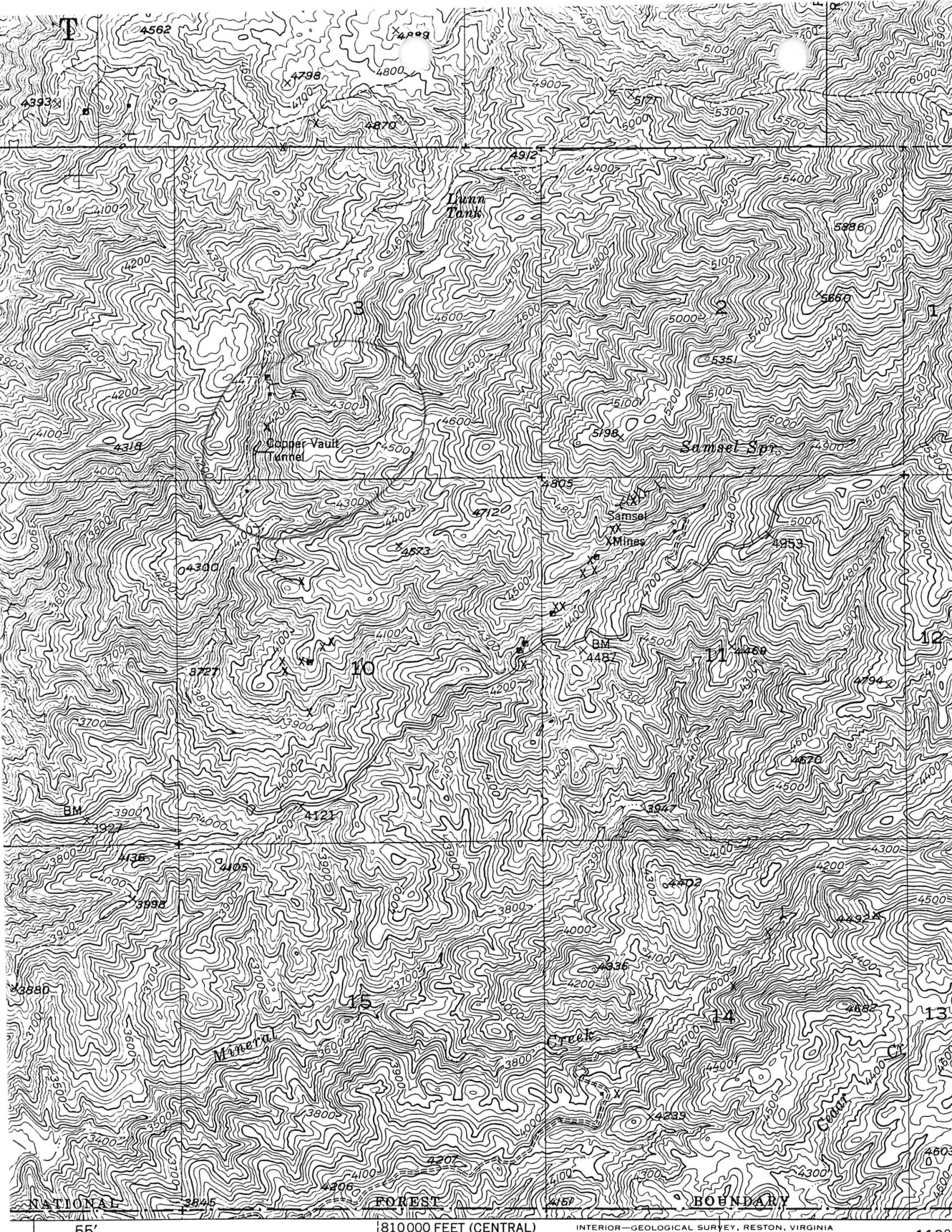
GILA COUNTY MILS NUMBER: 37

LOCATION: TOWNSHIP 2 S RANGE 14 E SECTION 3 QUARTER SW
LATITUDE: N 33DEG 16MIN 51SEC LONGITUDE: W 110DEG 54MIN 28SEC
TOPO MAP NAME: PINAL RANCH - 7.5 MIN

CURRENT STATUS: UNKNOWN

COMMODITY:
COPPER

BIBLIOGRAPHY:
ADMMR COPPER VAULT TUNNEL FILE



T. 1 S.
17'30"
T. 2 S.

830000 FEET
(CENTRAL)

33°15'
110°52'30"

MILE

*Copper Vault Tunnel
T2S R14E Sec 3 SW*

ROAD CLASSIFICATION

- | | |
|---|-----------------------------|
| HARD-SURFACE ALL WEATHER ROADS | DRY WEATHER ROADS |
| Heavy-duty <u> </u> <u>4 LANE 16 LANE</u> | Improved dirt <u> </u> |
| Medium-duty <u> </u> <u>4 LANE 16 LANE</u> | Unimproved dirt <u> </u> |
| Loose-surface, graded, or narrow hard-surface <u> </u> | |
| U. S. Route | State Route |

(RAY 1:62500)

PINALEÑO RANCH, ARIZ.

N3315-W11052.5/7.5

7.5

COPPER VAULT TUNNEL

GILA COUNTY

KAP WR 8/7/87: Quickly drove through the Copper Vault Tunnel property as it was getting dark. A couple of sites on the property have been benched and some production may have taken place for siliceous copper ore. During a 1975 visit to the Lydia Claims about 1.5 miles to the north, earth moving equipment was nated to be active on this property. The occurrence is in the Pinal Schist, probably along a fault. Gila County MILS #37 is the MILS listing for this property. However, I do not believe the ADMMR Boston Miami Copper Co (file) has anything to do with this property. Accodring to tht file the property would be less than one mile from the railroad in Miami where as Copper Vault Tunnel in the SW 1/4, Sec 3 T2S R14E is about 8-10 miles from Miami. A new file should be made for the property using MILS #37 as the basis. The current status should be listed as explored prospect.

KAP WR 10/11/87: While writing up information on the Copper Vault Tunnel in Gila County it was determined that the referenced file was unrelated. Cards and the data base were corrected and a new file created. The data in the Boston Miami Copper Company (file) Gila County is not currently tied to any on the ground location.
