



CONTACT INFORMATION

Mining Records Curator
Arizona Geological Survey
1520 West Adams St.
Phoenix, AZ 85007
602-771-1601
<http://www.azgs.az.gov>
inquiries@azgs.az.gov

The following file is part of the

Arizona Department of Mines and Mineral Resources Mining Collection

ACCESS STATEMENT

These digitized collections are accessible for purposes of education and research. We have indicated what we know about copyright and rights of privacy, publicity, or trademark. Due to the nature of archival collections, we are not always able to identify this information. We are eager to hear from any rights owners, so that we may obtain accurate information. Upon request, we will remove material from public view while we address a rights issue.

CONSTRAINTS STATEMENT

The Arizona Geological Survey does not claim to control all rights for all materials in its collection. These rights include, but are not limited to: copyright, privacy rights, and cultural protection rights. The User hereby assumes all responsibility for obtaining any rights to use the material in excess of "fair use."

The Survey makes no intellectual property claims to the products created by individual authors in the manuscript collections, except when the author deeded those rights to the Survey or when those authors were employed by the State of Arizona and created intellectual products as a function of their official duties. The Survey does maintain property rights to the physical and digital representations of the works.

QUALITY STATEMENT

The Arizona Geological Survey is not responsible for the accuracy of the records, information, or opinions that may be contained in the files. The Survey collects, catalogs, and archives data on mineral properties regardless of its views of the veracity or accuracy of those data.

PRINTED: 01/15/2003

ARIZONA DEPARTMENT OF MINES AND MINERAL RESOURCES AZMILS DATA

PRIMARY NAME: COON CREEK HEMATITE

ALTERNATE NAMES:
WILLYARD-BAKER CLAIMS

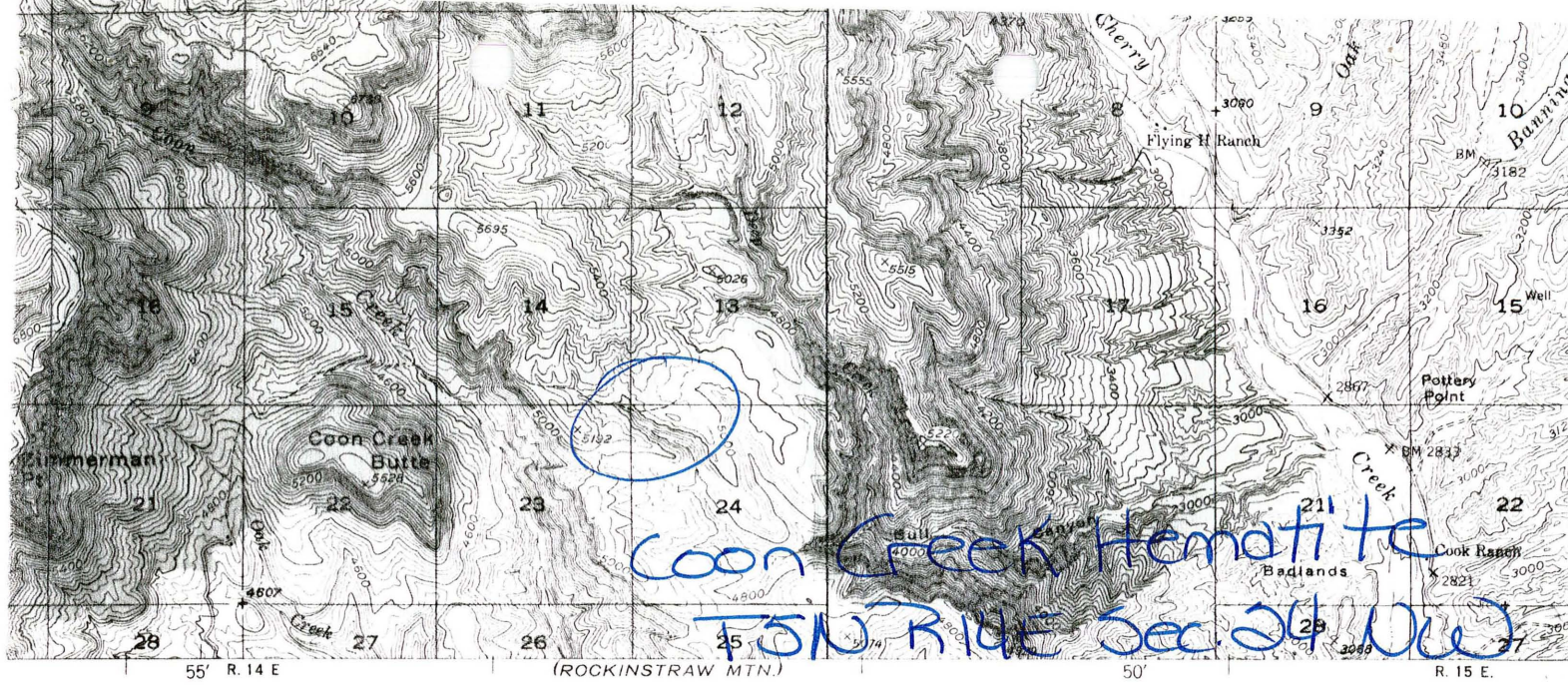
GILA COUNTY MILS NUMBER: 270

LOCATION: TOWNSHIP 5 N RANGE 14 E SECTION 24 QUARTER NW
LATITUDE: N 33DEG 46MIN 00SEC LONGITUDE: W 110DEG 52MIN 20SEC
TOPO MAP NAME: MCFADDEN PEAK - 15 MIN

CURRENT STATUS: EXP PROSPECT

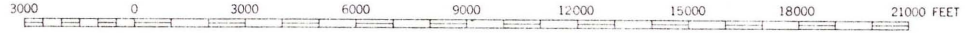
COMMODITY:
IRON HEMATITE

BIBLIOGRAPHY:
ADMMR COON CREEK HEMATITE FILE
HARPER, C.M. "RECONN OF IRON RES. IN AZ" USBM
IC 8236, P. 31; 1964
DEPOSIT EXTENDS INTO SEC 13 AND 23
USGS MF 1162-H



(ROCKINSTRAW MTN.)

SCALE 1:62500



CONTOUR INTERVAL 40 FEET
DATUM IS MEAN SEA LEVEL

949

THIS MAP COMPLIES WITH NATIONAL MAP ACCURACY STANDARDS
FOR SALE BY U. S. GEOLOGICAL SURVEY, FEDERAL CENTER, DENVER, COLORADO OR WASHINGTON 25, D. C.
A FOLDER DESCRIBING TOPOGRAPHIC MAPS AND SYMBOLS IS AVAILABLE ON REQUEST

Abstract from "Arizona Iron Ore Deposits" in IRON COMMODITY file: The Willyard-Baker Claims are in the Sierra Ancha District, 3 miles up Bull Canyon from its confluence with Cherry Creek (approximately Secs. 12-13, T5N, R14E). This deposit as reported by Willyard, consists of a pinching and swelling magnetite bed, 8 to 100 feet thick, which replaces probable mesal limestone near the Dripping Spring quartzite contact. The deposit, according to him is in lenticular bodies and the outcrop is intermittently traceable for at least 2 miles. Willyard's samples are said by him to have run around 60 percent iron. Development work consists of a bulldozer cut into one outcrop. Reserves are therefore unknown. (Agent, Wayne Willyard, 1010 Lemon St., Tempe, Arizona.)

DEPARTMENT OF MINERAL RESOURCES
STATE OF ARIZONA
FIELD ENGINEERS REPORT

Mine : Willyerd^A-Baker Claims

Date May 12, 1961

District Sierra Ancha Mountains (Coon Creek area) Engineer Lewis A. Smith
Gila County *REPORT SUBMITTED BY ME*

Subject: Interview with Wayne Willyerd (5-1-61)
^A

Claims: 16 unpatented with amended location as of October 3, 1960.

Owners: Wayne Willyerd^A, 1010 Lemon St. (University Trailer Court)
Cletus Baker, Tempe, Arizona

Work: Bulldozer work has been done to expose the iron ore bed.^B

Geology: The deposit consists of a hematite bed which averages about 8 feet thick, but varies from 8 to 100 feet thick in lenses. The hematite apparently has replaced Mescal limestone near the Dripping Springs quartzite contact. The preliminary sampling according to Willyerd indicates nearly 60 percent iron. The intermittent outcrops can be traced for nearly 3 miles and the average dip of the hematite bed is about horizontal, varying locally. Some transverse faulting has been seen.

The deposit was examined by Brooks of Colorado Fuel and Iron and was, according to Willyerd, declared satisfactory, and that C. F. & I. may be interested later.

Mr. Willyerd^A is now ironing out a problem of land jurisdiction. The claims lie on a grazing lease belonging to the Flying H Ranch owned by Ted Allan. However, it is believed that the government had reserved the mineral rights. We will be advised of the results of the investigation.