



## **CONTACT INFORMATION**

Mining Records Curator  
Arizona Geological Survey  
1520 West Adams St.  
Phoenix, AZ 85007  
602-771-1601  
<http://www.azgs.az.gov>  
[inquiries@azgs.az.gov](mailto:inquiries@azgs.az.gov)

The following file is part of the

Arizona Department of Mines and Mineral Resources Mining Collection

## **ACCESS STATEMENT**

These digitized collections are accessible for purposes of education and research. We have indicated what we know about copyright and rights of privacy, publicity, or trademark. Due to the nature of archival collections, we are not always able to identify this information. We are eager to hear from any rights owners, so that we may obtain accurate information. Upon request, we will remove material from public view while we address a rights issue.

## **CONSTRAINTS STATEMENT**

The Arizona Geological Survey does not claim to control all rights for all materials in its collection. These rights include, but are not limited to: copyright, privacy rights, and cultural protection rights. The User hereby assumes all responsibility for obtaining any rights to use the material in excess of "fair use."

The Survey makes no intellectual property claims to the products created by individual authors in the manuscript collections, except when the author deeded those rights to the Survey or when those authors were employed by the State of Arizona and created intellectual products as a function of their official duties. The Survey does maintain property rights to the physical and digital representations of the works.

## **QUALITY STATEMENT**

The Arizona Geological Survey is not responsible for the accuracy of the records, information, or opinions that may be contained in the files. The Survey collects, catalogs, and archives data on mineral properties regardless of its views of the veracity or accuracy of those data.

PRINTED: 01/15/2003

ARIZONA DEPARTMENT OF MINES AND MINERAL RESOURCES AZMILS DATA

PRIMARY NAME: CONTACT

ALTERNATE NAMES:

MARICOPA COUNTY MILS NUMBER: 138

LOCATION: TOWNSHIP 5 N RANGE 7 W SECTION 31 QUARTER NW  
LATITUDE: N 33DEG 44MIN 08SEC LONGITUDE: W 113DEG 02MIN 05SEC  
TOPO MAP NAME: BIG HORN MTS - 15 MIN

CURRENT STATUS: PAST PRODUCER

COMMODITY:

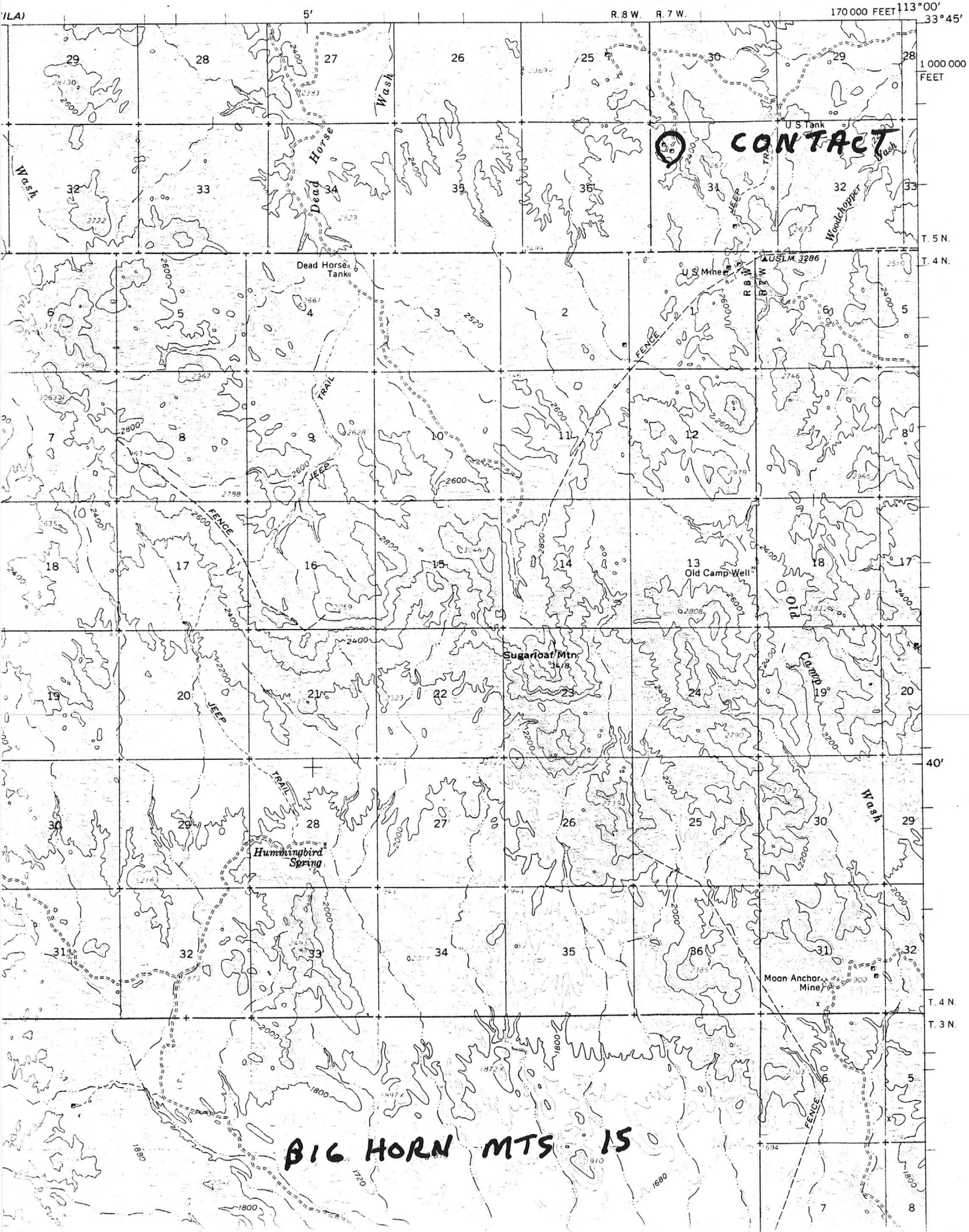
COPPER  
LEAD  
GOLD LODE  
SILVER

BIBLIOGRAPHY:

USGS BIG HORN MTS QUAD  
ADMMR CONTACT FILE

BIG HORN MTS. QUADRANGLE  
ARIZONA-MARICOPA CO.  
15 MINUTE SERIES (TOPOGRAPHIC)

(VULTURE MTS.)



BIG HORN MTS 15

CONTACT

(LA)

1 000 000  
FEET

T. 5 N.

T. 4 N.

40'

T. 4 N.

T. 3 N.

5  
8

CONTACT MINE

MARICOPA COUNTY

NJN WR 6/27/86: Dick Parks, geologist, BLM Phoenix, office, reported that Jack Crawford of California will be drilling soon at the Contact Mine (f) Maricopa County.

---

3/10/64

Albert Flom  
5009 N 62 Lane, Glendale.

Contact mine - 9 claims. Locating two more. Owned by Waddle et al. See sketch below. Claims unpatented. Flom and partners have had them surveyed, iron posts set, and have built 7 or 8 miles of road to them.

Flom says there are 3 shafts about 75 ft deep. Small veins with copper, lead, gold, silver.

Pretty "blue" specimens. (Azurite?)

Says amethyst has been found.

Claims have produced since 1956.

Milligan, assayer(?) is employed by Flom & group.

The group knows "nothing about mining".

Flom will phone L.A.S. and take him to property.

Prof. Zeigler? V of A? said to have seen property.

