



CONTACT INFORMATION

Mining Records Curator
Arizona Geological Survey
1520 West Adams St.
Phoenix, AZ 85007
602-771-1601
<http://www.azgs.az.gov>
inquiries@azgs.az.gov

The following file is part of the

Arizona Department of Mines and Mineral Resources Mining Collection

ACCESS STATEMENT

These digitized collections are accessible for purposes of education and research. We have indicated what we know about copyright and rights of privacy, publicity, or trademark. Due to the nature of archival collections, we are not always able to identify this information. We are eager to hear from any rights owners, so that we may obtain accurate information. Upon request, we will remove material from public view while we address a rights issue.

CONSTRAINTS STATEMENT

The Arizona Geological Survey does not claim to control all rights for all materials in its collection. These rights include, but are not limited to: copyright, privacy rights, and cultural protection rights. The User hereby assumes all responsibility for obtaining any rights to use the material in excess of "fair use."

The Survey makes no intellectual property claims to the products created by individual authors in the manuscript collections, except when the author deeded those rights to the Survey or when those authors were employed by the State of Arizona and created intellectual products as a function of their official duties. The Survey does maintain property rights to the physical and digital representations of the works.

QUALITY STATEMENT

The Arizona Geological Survey is not responsible for the accuracy of the records, information, or opinions that may be contained in the files. The Survey collects, catalogs, and archives data on mineral properties regardless of its views of the veracity or accuracy of those data.

PRIMARY NAME:COMSTOCK GROUP

ALTERNATE NAMES:

ARIZONA COMSTOCK

MOHAVE COUNTY MILS NUMBER: 31E

LOCATION: TOWNSHIP19 N RANGE20 W SECTION 20 QTR. NW
LATITUDE:N 35DEG 01MIN 30SEC LONGITUDE:W 108DEG 26MIN 31SEC
TOPO MAP NAME:OATMAN - 7.5 MIN

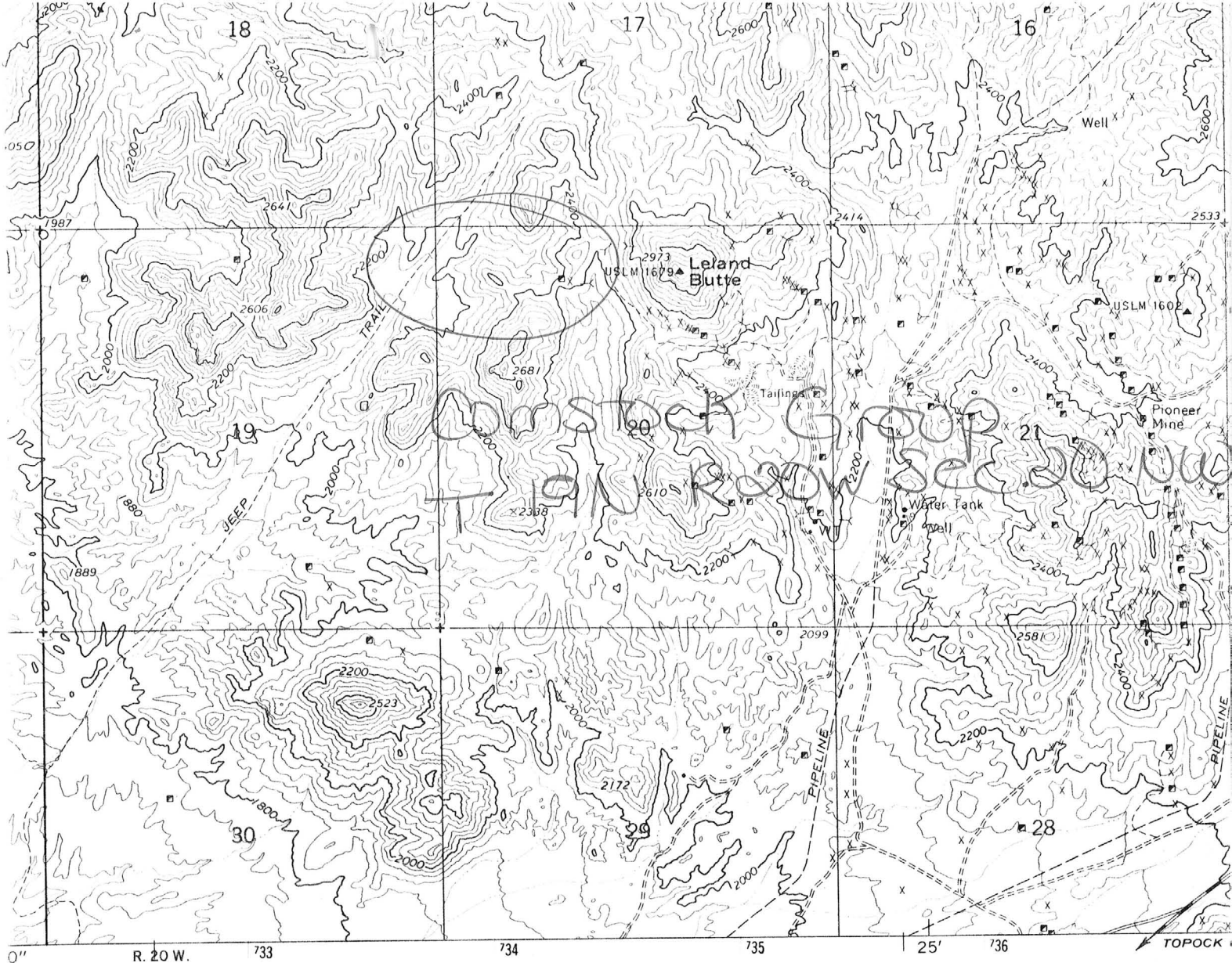
CURRENT STATUS:DEVEL DEPOSIT

COMMODITY:

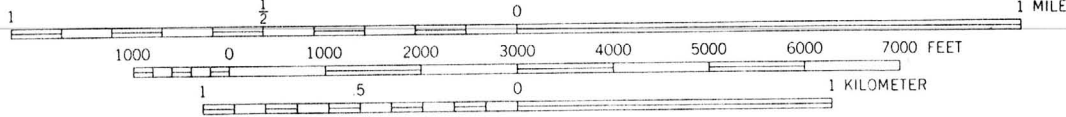
GOLD-(M) LODE-PRIMARY

BIBLIOGRAPHY:

RANSOME, F.L., USGS BULL 743, MAP
ADMR MOHAVE CARD FILE
ADMR MOHAVE CUSTOM MILL PROJ. CARD FILE
ADMR COMSTOCK MINE FILE
ADMR MOHAVE MIN. & PROS. FILE INDEX MAP 323
ADMR UNITED EASTERN MINE FILE, HAFF & COLWELL
MAP
WEED, W.H., THE MINES HANDBOOK VOL. XVI, 1925
P. 232
ADDITIONAL WORKINGS SEC. 17 & 18 T19N-R20W



SCALE 1:24000



CONTOUR INTERVAL 40 FEET
DATUM IS MEAN SEA LEVEL



QUADRANGLE LOCATION

THIS MAP COMPLIES WITH NATIONAL MAP ACCURACY STANDARDS
FOR SALE BY U. S. GEOLOGICAL SURVEY, DENVER, COLORADO 80225, OR WASHINGTON, D. C. 20242
A FOLDER DESCRIBING TOPOGRAPHIC MAPS AND SYMBOLS IS AVAILABLE ON REQUEST

Oatman 7.5'

NAME: COMSTOCK GROUP

COUNTY: MOHAVE

T 19 N R 20 W SEC. 20 E 12400
17-18?

DISTRICT: SAN FRANCISCO
DARTMAN

Mineralization:

Geology:

Type Operation:

Production:

References: USGS 743

field notes Mohave Min. & Pros. file Index Map (#323)

Mohave County Card File

PLAN OF COMSTOCK GROUP

SITUATED IN SAN FRANCISCO MINING DISTRICT, MOHAVE COUNTY, ARIZONA

RE. LEPOIDS, SURVEYOR SCALE 300 FT.=1 IN

JANUARY 1916

