



CONTACT INFORMATION

Mining Records Curator
Arizona Geological Survey
1520 West Adams St.
Phoenix, AZ 85007
602-771-1601
<http://www.azgs.az.gov>
inquiries@azgs.az.gov

The following file is part of the

Arizona Department of Mines and Mineral Resources Mining Collection

ACCESS STATEMENT

These digitized collections are accessible for purposes of education and research. We have indicated what we know about copyright and rights of privacy, publicity, or trademark. Due to the nature of archival collections, we are not always able to identify this information. We are eager to hear from any rights owners, so that we may obtain accurate information. Upon request, we will remove material from public view while we address a rights issue.

CONSTRAINTS STATEMENT

The Arizona Geological Survey does not claim to control all rights for all materials in its collection. These rights include, but are not limited to: copyright, privacy rights, and cultural protection rights. The User hereby assumes all responsibility for obtaining any rights to use the material in excess of "fair use."

The Survey makes no intellectual property claims to the products created by individual authors in the manuscript collections, except when the author deeded those rights to the Survey or when those authors were employed by the State of Arizona and created intellectual products as a function of their official duties. The Survey does maintain property rights to the physical and digital representations of the works.

QUALITY STATEMENT

The Arizona Geological Survey is not responsible for the accuracy of the records, information, or opinions that may be contained in the files. The Survey collects, catalogs, and archives data on mineral properties regardless of its views of the veracity or accuracy of those data.

PRINTED: 11-16-2012

ARIZONA DEPARTMENT OF MINES AND MINERAL RESOURCES AZMILS DATA

PRIMARY NAME: CHISHOLM CLAIMS

ALTERNATE NAMES:

LA PAZ COUNTY MILS NUMBER: 252

LOCATION: TOWNSHIP 9 N RANGE 16 W SECTION 35 QUARTER NW
LATITUDE: N 34DEG 05MIN 00SEC LONGITUDE: W 113DEG 54MIN 00SEC
TOPO MAP NAME: SWANSEA - 15 MIN

CURRENT STATUS: UNKNOWN

COMMODITY:
STONE MARBLE CB

BIBLIOGRAPHY:
AZBM FILE DATA
ADMMR CHISHOLM CLAIMS FILE

PRINTED: 12/17/2002

ARIZONA DEPARTMENT OF MINES AND MINERAL RESOURCES AZMILS DATA

PRIMARY NAME: CHISHOLM CLAIMS

ALTERNATE NAMES:

LA PAZ COUNTY MILS NUMBER: 252

LOCATION: TOWNSHIP 9 N RANGE 16 W SECTION 35 QUARTER NW

LATITUDE: N 34DEG 05MIN 00SEC LONGITUDE: W 113DEG 54MIN 00SEC

TOPO MAP NAME: SWANSEA - 15 MIN

(NEEDS
FIELD CHECK TO
VERIFY LOCATION
NSN - 8-2008)

CURRENT STATUS: UNKNOWN

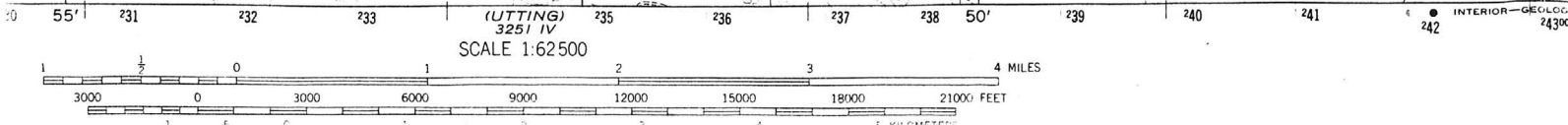
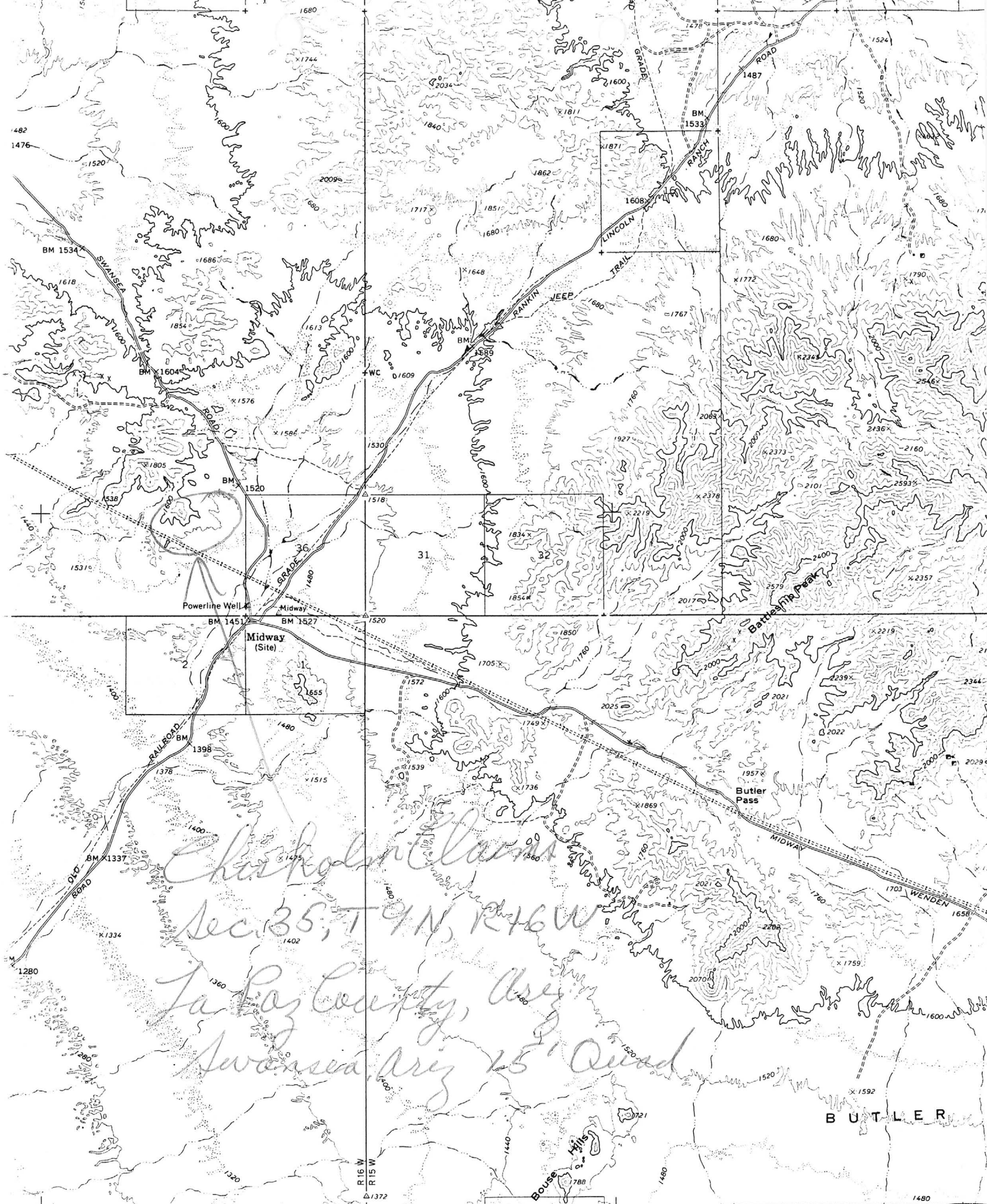
COMMODITY:

STONE MARBLE CB

BIBLIOGRAPHY:

AZBM FILE DATA

ADMMR CHISHOLM CLAIMS FILE



DEPARTMENT OF MINERAL RESOURCES

**STATE OF ARIZONA
FIELD ENGINEERS REPORT**

Mine Chisholm Claims

Date August 29, 1961

District Bouse District, Yuma County

Engineer Lewis A. Smith

Subject: Interview with B.H.Chisholm, Box 451, Salome (owner)

Property: 2 placer claims

Owner: B. H. Chisholm, Box 451, Salome

Location: 13 miles northeast of Bouse, near Midway road junction and 3 miles west of Battleship Mountain (approximately S 36, T. 9 N., R. 16 W.)

Mineral: Marble

Work: Trenches to determine bedding thickness and location pit.

Geology: The marble lies in a limited area bounded to the south by schist and to the north by granitic rocks (probably gneiss). The marble is in beds ranging from 1½ inches to 2 feet in thickness. The beds lie on a hill sloping to the west or southwest and are flat lying. The marble area dimensions are not yet definitely known but Chisholm estimated that the patch of exposed marble covers more than his claims, some being covered by detritus around the border. The marble is varicolored but favors orange red to brown red or brown orange. Some green, red, and white colors have been noted (see specimens in museum). Some is mottled and all of it polishes quite well. The individual beds are not fractured and Chisholm stated that they can be split to get fairly large dimension stone, but not saw blocks (generally 4 feet by 4 feet by 6 feet). He hopes to market it as dimension slabs, etc.

Chisholm has a "gang" wire saw (6 wires) and mining and hauling equipment, but feels that the major problem is marketing.

T8NR16W Sec. 1 S½