



CONTACT INFORMATION

Mining Records Curator
Arizona Geological Survey
1520 West Adams St.
Phoenix, AZ 85007
602-771-1601
<http://www.azgs.az.gov>
inquiries@azgs.az.gov

The following file is part of the

Arizona Department of Mines and Mineral Resources Mining Collection

ACCESS STATEMENT

These digitized collections are accessible for purposes of education and research. We have indicated what we know about copyright and rights of privacy, publicity, or trademark. Due to the nature of archival collections, we are not always able to identify this information. We are eager to hear from any rights owners, so that we may obtain accurate information. Upon request, we will remove material from public view while we address a rights issue.

CONSTRAINTS STATEMENT

The Arizona Geological Survey does not claim to control all rights for all materials in its collection. These rights include, but are not limited to: copyright, privacy rights, and cultural protection rights. The User hereby assumes all responsibility for obtaining any rights to use the material in excess of "fair use."

The Survey makes no intellectual property claims to the products created by individual authors in the manuscript collections, except when the author deeded those rights to the Survey or when those authors were employed by the State of Arizona and created intellectual products as a function of their official duties. The Survey does maintain property rights to the physical and digital representations of the works.

QUALITY STATEMENT

The Arizona Geological Survey is not responsible for the accuracy of the records, information, or opinions that may be contained in the files. The Survey collects, catalogs, and archives data on mineral properties regardless of its views of the veracity or accuracy of those data.

PRINTED: 12/18/2002

ARIZONA DEPARTMENT OF MINES AND MINERAL RESOURCES AZMILS DATA

PRIMARY NAME: CHINA MINE

ALTERNATE NAMES:

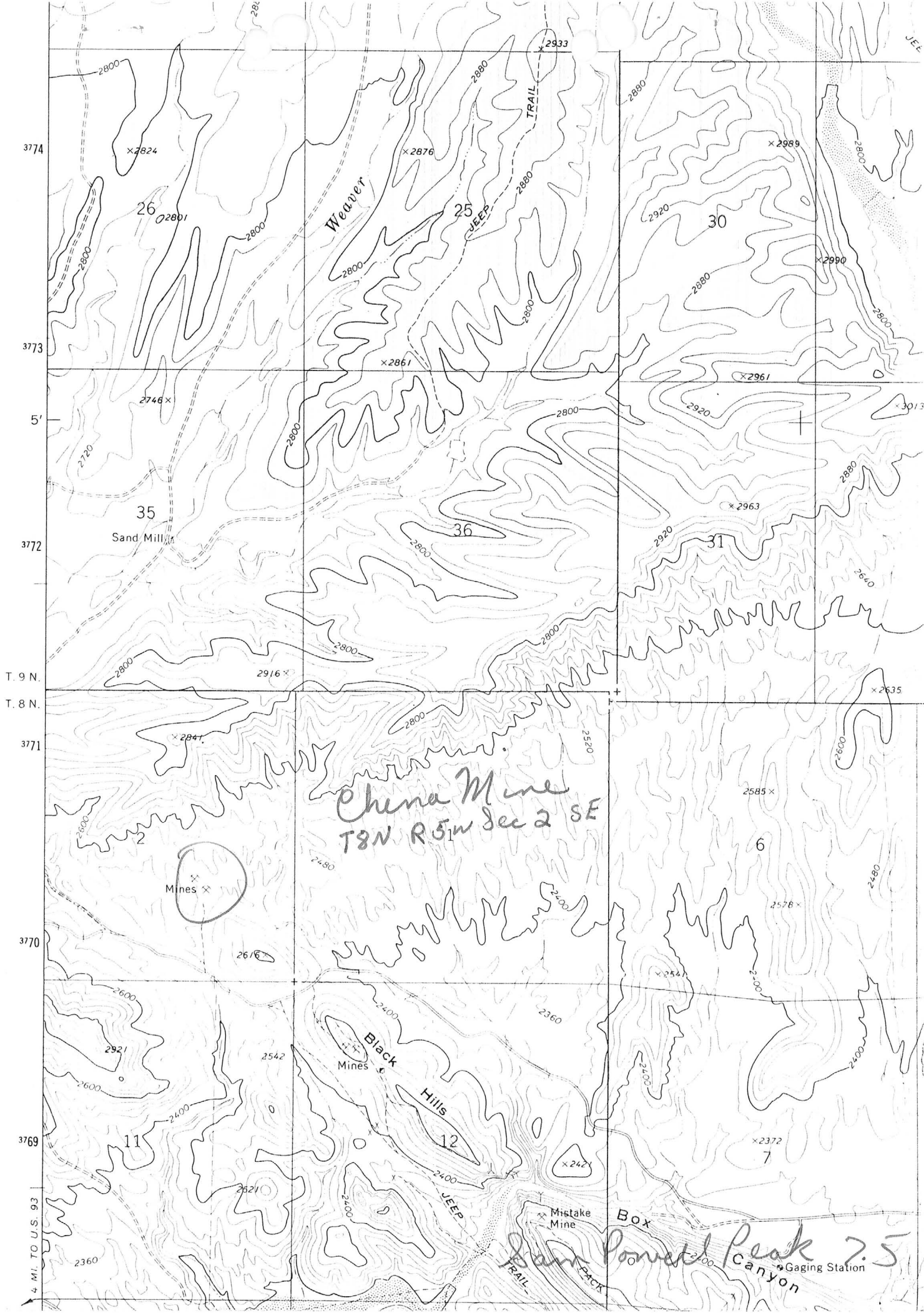
YAVAPAI COUNTY MILS NUMBER: 1358

LOCATION: TOWNSHIP 8 N RANGE 5 W SECTION 2 QUARTER SE
LATITUDE: N 34DEG 03MIN 44SEC LONGITUDE: W 112DEG 44MIN 29SEC
TOPO MAP NAME: SAM POWELL PEAK - 7.5 MIN

CURRENT STATUS: PAST PRODUCER

COMMODITY:
GOLD

BIBLIOGRAPHY:
ADMMR CHINA MINE FILE



China Mine
T8N R5W Sec 2 SE

Mines

Black Hills
Mines

Mistake Mine

Box

Pan Power Peak 7.5
Gaging Station

3774

3773

5'

3772

T. 9 N.

T. 8 N.

3771

3770

3769

4 MI. TO U.S. 93

x2824

x2876

x2933

x2989

x2861

x2746

x2961

x3013

x2963

x2916

x2635

x2841

x2585

x2676

x2578

x2542

x2544

x2360

x2621

x2421

x2372

11

12

7

26

25

30

36

31

6

Weaver

TRAIL

TRAIL

JEE

CHINA MINE

YAVAPAI COUNTY

KAP WR 12/20/85: The prospect in the center of the SE $\frac{1}{4}$, Sec 2, T8N R5W is the China Mine. It was included as part of the Mohave Mining and Milling properties in MILS. It should be given its own identity and visited in the field the next time an engineer is in the area.

1992 - CHINA MINE HELD BY DON ROSS, REGINERO CONSULTING
GEOLOGIST, 2226 E. SUNNYSIDE DR., PHOENIX, AZ 85028 992 0758.
NSN