



CONTACT INFORMATION

Mining Records Curator
Arizona Geological Survey
1520 West Adams St.
Phoenix, AZ 85007
602-771-1601
<http://www.azgs.az.gov>
inquiries@azgs.az.gov

The following file is part of the

Arizona Department of Mines and Mineral Resources Mining Collection

ACCESS STATEMENT

These digitized collections are accessible for purposes of education and research. We have indicated what we know about copyright and rights of privacy, publicity, or trademark. Due to the nature of archival collections, we are not always able to identify this information. We are eager to hear from any rights owners, so that we may obtain accurate information. Upon request, we will remove material from public view while we address a rights issue.

CONSTRAINTS STATEMENT

The Arizona Geological Survey does not claim to control all rights for all materials in its collection. These rights include, but are not limited to: copyright, privacy rights, and cultural protection rights. The User hereby assumes all responsibility for obtaining any rights to use the material in excess of "fair use."

The Survey makes no intellectual property claims to the products created by individual authors in the manuscript collections, except when the author deeded those rights to the Survey or when those authors were employed by the State of Arizona and created intellectual products as a function of their official duties. The Survey does maintain property rights to the physical and digital representations of the works.

QUALITY STATEMENT

The Arizona Geological Survey is not responsible for the accuracy of the records, information, or opinions that may be contained in the files. The Survey collects, catalogs, and archives data on mineral properties regardless of its views of the veracity or accuracy of those data.

PRINTED: 12/17/2002

ARIZONA DEPARTMENT OF MINES AND MINERAL RESOURCES AZMILS DATA

PRIMARY NAME: CHERRY SPRING PEAK #1

ALTERNATE NAMES:

COCHISE COUNTY MILS NUMBER: 882

LOCATION: TOWNSHIP 12 S RANGE 20 E SECTION 22 QUARTER NE
LATITUDE: N 32DEG 22MIN 40SEC LONGITUDE: W 110DEG 17MIN 28SEC
TOPO MAP NAME: CHERRY SPRING PEAK - 7.5 MIN

CURRENT STATUS: UNKNOWN

COMMODITY:
COPPER OXIDE

BIBLIOGRAPHY:
ADMMR CHERRY SPRING PEAK #1 FILE
USGS MRDS RECORD M050674

04/05/89

ARIZONA DEPARTMENT OF MINES AND MINERAL RESOURCES FILE DATA

PRIMARY NAME: CHERRY SPRING PEAK #1

ALTERNATE NAMES:

COCHISE COUNTY MILS NUMBER: 882

LOCATION: TOWNSHIP 12 S RANGE 20 E SECTION 22 QUARTER NE
LATITUDE: N 32DEG 22MIN 40SEC LONGITUDE: W 110DEG 17MIN 28SEC
TOPO MAP NAME: CHERRY SPRING PEAK - 7.5 MIN

CURRENT STATUS:

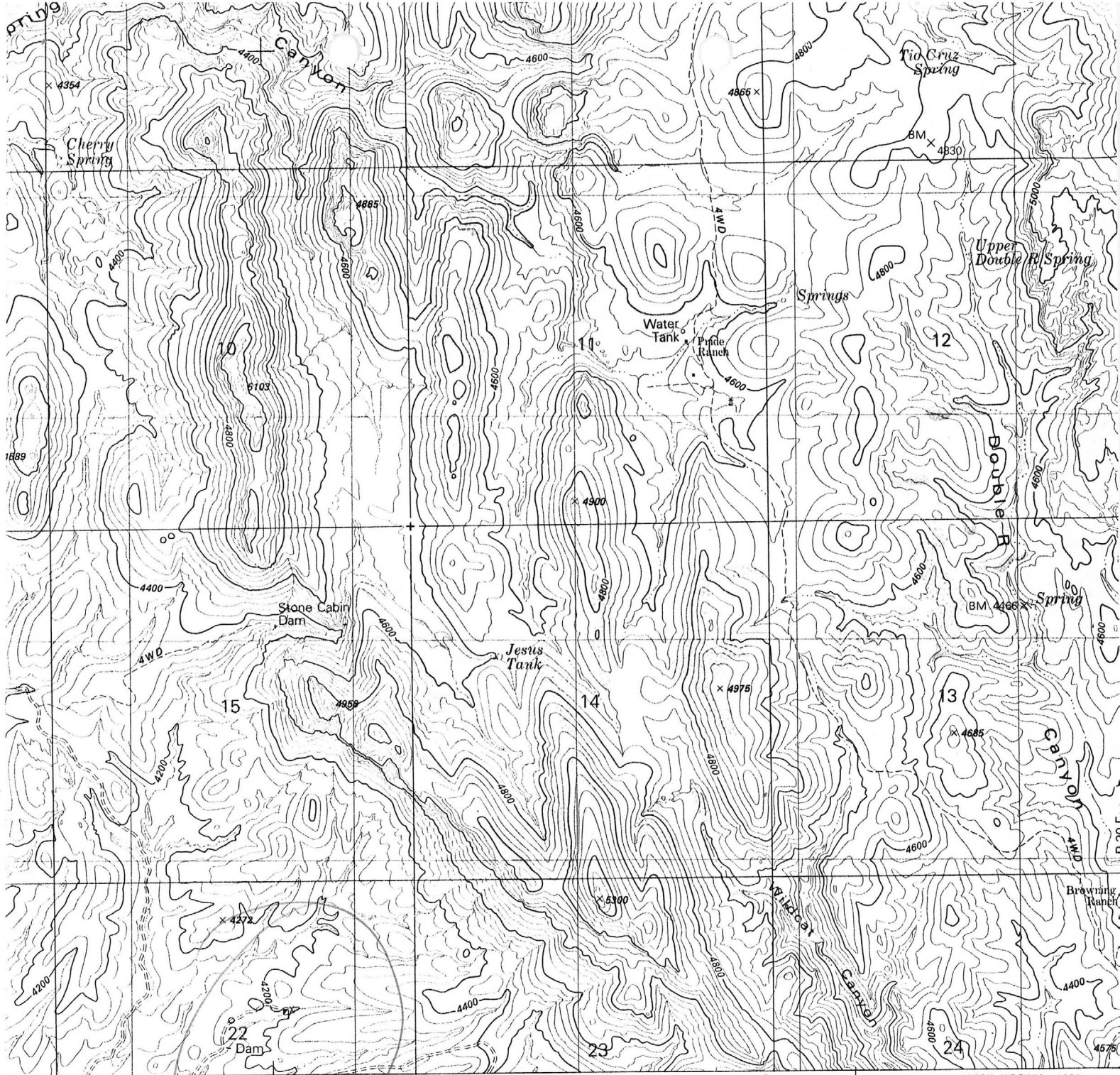
COMMODITY:
UNKNOWN

BIBLIOGRAPHY:
ADMMR CHERRY SPRING PEAK #1 FILE

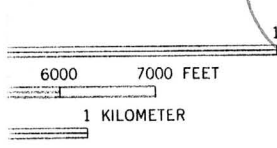
NJM 613-197 PROSPECTOR SAMPLE .42/100 Ag 12.5% Cu .4% Zn

USGS - MDS - M050674 REPORT #

Mechanic ABSTRACT, AZUMBA



CABEL 11 MI. 566 17'30" 567 568 569 570000mE



9

NDARDS
R RESTON, VIRGINIA 22092
ABLE ON REQUEST



● INTERIOR—GEOLOGICAL SURVEY, RESTON, VIRGINIA—1981

ROAD CLASSIFICATION

- Primary highway, hard surface _____
- Secondary highway, hard surface _____
- Light-duty road, hard or improved surface _____
- Unimproved road _____
- Interstate Route
- U. S. Route
- State Route

CHERRY SPRING PEAK, AR

NE/4 REDINGTON 15' QUADRANGLE
N3222.5—W11015/7.5

From
WIDE WORLD OF MAPS INC.
ARIZ. MAP SHOP & GALLERY
Phoenix, Arizona

1981

DMA 3948 IV NE—SERIES V898