



## CONTACT INFORMATION

Mining Records Curator  
Arizona Geological Survey  
1520 West Adams St.  
Phoenix, AZ 85007  
602-771-1601  
<http://www.azgs.az.gov>  
[inquiries@azgs.az.gov](mailto:inquiries@azgs.az.gov)

The following file is part of the

Arizona Department of Mines and Mineral Resources Mining Collection

## ACCESS STATEMENT

These digitized collections are accessible for purposes of education and research. We have indicated what we know about copyright and rights of privacy, publicity, or trademark. Due to the nature of archival collections, we are not always able to identify this information. We are eager to hear from any rights owners, so that we may obtain accurate information. Upon request, we will remove material from public view while we address a rights issue.

## CONSTRAINTS STATEMENT

The Arizona Geological Survey does not claim to control all rights for all materials in its collection. These rights include, but are not limited to: copyright, privacy rights, and cultural protection rights. The User hereby assumes all responsibility for obtaining any rights to use the material in excess of "fair use."

The Survey makes no intellectual property claims to the products created by individual authors in the manuscript collections, except when the author deeded those rights to the Survey or when those authors were employed by the State of Arizona and created intellectual products as a function of their official duties. The Survey does maintain property rights to the physical and digital representations of the works.

## QUALITY STATEMENT

The Arizona Geological Survey is not responsible for the accuracy of the records, information, or opinions that may be contained in the files. The Survey collects, catalogs, and archives data on mineral properties regardless of its views of the veracity or accuracy of those data.

ARIZONA DEPARTMENT OF MINES AND MINERAL RESOURCES AZMILS DATA

PRIMARY NAME: CHEMEHUEVIS PLACERS

ALTERNATE NAMES:

BUCK EXTENTION  
JOHNSON JACKPOT  
CHIEF CLAIM

MOHAVE COUNTY MILS NUMBER: 299A

LOCATION: TOWNSHIP 15 N RANGE 18 W SECTION 9 QUARTER --  
LATITUDE: N 34DEG 39MIN 24SEC LONGITUDE: W 114DEG 08MIN 46SEC  
TOPO MAP NAME: BUCK MOUNTAINS - 7.5 MIN

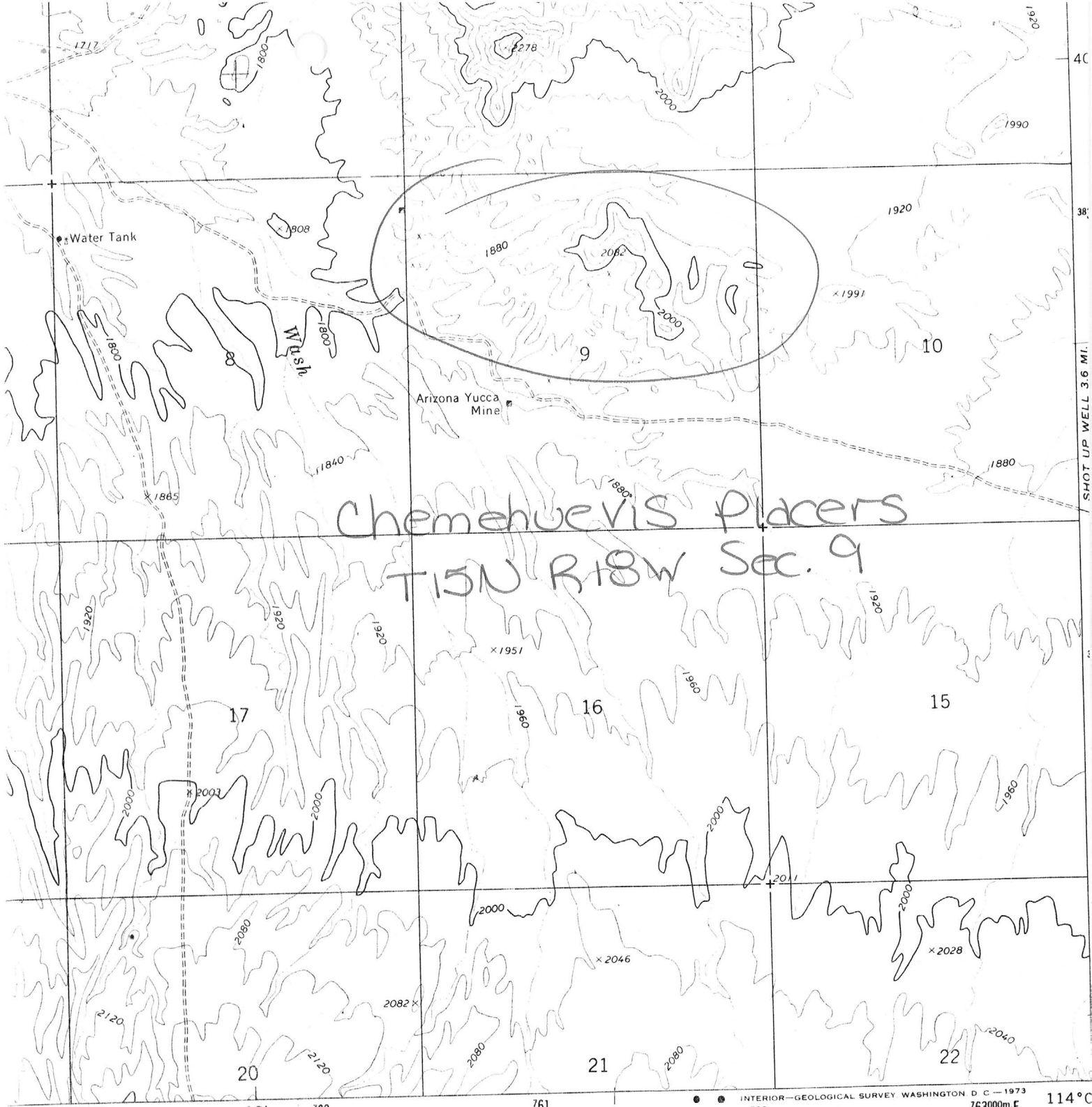
CURRENT STATUS: PAST PRODUCER

COMMODITY:

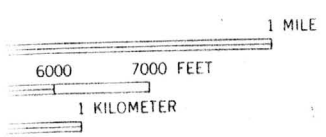
GOLD PLACER

BIBLIOGRAPHY:

ADMMR CHEMEHUEVIS PLACER FILE  
"MINERAL & WTR. RES. OF AZ" AZBM BULL 180, P  
158, 161, 163, 1969  
WILSON, E.D. "AZ GOLD PLACERS" AZBM BULL 160,  
P 33, 1952  
OVERSTREET, W.C. "GEOL. OCC. OF MONAZITE"  
USGS PP 530, P. 113, 1967  
BLM AMC FILE 50196  
RABB, DAVID. "RECOVERY OF METAL VALUES PRIOR  
TO RECLAMATION OF MINED AREAS IN THE SOUTH  
WEST" (ADMMR GEOLOGY FILE)  
ALSO IN SEC. 8



Chemehuevis Placers  
T15N R18W Sec. 9



- INTERIOR—GEOLOGICAL SURVEY WASHINGTON D. C.—1973 762 763000m.E. 114° C
- ROAD CLASSIFICATION**
- Primary highway, hard surface —————
  - Secondary highway, hard surface - - - - -
  - Light-duty road, hard or improved surface ————
  - Unimproved road - - - - -
  - Interstate Route (circle with red border)
  - U. S. Route (circle with red border)
  - State Route (circle with red border)

**BUCK MOUNTAINS, ARIZ**  
NW/4 BUCK MOUNTAINS 15' QUADRANGLE  
N3437.5—W11407.5/7.5

7.5'

Office 602/955-3535

Mobile 602/377-1052



Founded 1953

**TIMA OIL AND MINING, CO.**

Steve E. Tima  
President

2242 East Lincoln Drive  
Phoenix, Arizona USA 85016-1143

ARIZONA DEPARTMENT OF MINERAL RESOURCES  
MINERAL BUILDING, FAIRGROUNDS  
PHOENIX, ARIZONA

August 25, 1958

To the Owner or Operator of the Arizona Mining Property named below:

Chemehuevis Placers (Mohave County) gold  
(Property) (ore)

We have an old listing of the above property which we would like to have brought up to date.

Please fill out the enclosed Mine Owner's Report form with as complete detail as possible and attach copies of reports, maps, assay returns, shipment returns or other data which you have not sent us before and which might interest a prospective buyer in looking at the property.

*Frank P. Knight*

FRANK P. KNIGHT,  
Director.

Enc: Mine Own

<u>GOLD PLACER</u>	Chemehuevis placers Mohave County
Emery Blevins Kingman, Arizona	9-44
Report by E.B. Holt	9-6-40
CHEMEHUEVIS PLACERS	
Au	
Mohave 8 - 11	T 15 N, R 18 W
J. Hawkins, Kingman	unclaimed 9-14-46

PHOENIX  
AUG 15  
630PM  
1958  
ARIZ.

REASON CHECKED  
Unclaimed  
Unknown  
Insufficient address  
Moved, left no address  
No such address  
Do not use in this envelope  
Postage paid

~~Mr. Jack Hawkins  
Kingman  
Arizona~~

Date Printed: 10/29/93

ARIZONA DEPARTMENT OF MINES AND MINERAL RESOURCES

VERBAL INFORMATION SUMMARY

Information from: **Steve Nolte and Larry Toppenberg**

Company: Desert Wide Properties  
Address: 3330 N. Dobson Road # 8  
City, State ZIP: Chandler, Arizona 85224  
Phone: 602-838-6631

**MINE:** Chemehuevis Placers

ADMMR Mine File: Chemehuevis Placers file  
County: Mohave  
AzMILS Number: 299A

SUMMARY

Steve Nolte and Larry Toppenberg, brokers with Desert Wide Properties, 3330 N. Dobson Road #8, Chandler, Arizona 85224, phone 602-838-6631, represent a client interested in investing in a mine. They have been approached by Steve Tima, Tima Oil and Minerals of Chandler, to invest in his placer gold property in the Chemehuevis District of Mohave County.

Mr. Tima claims that the placer will yield a \$20,000 per ton concentrate in gold and silver by using a Dukes' Bowl and concentrating the placer gravels 20 to 1. The recovery is reported to only be successful, and the precious metals are only fire assayable if concentrates are pretreated by a proprietary roasting method.

Ken A. Phillips, Chief Engineer      Date: October 28, 1993

DEPARTMENT OF MINERAL RESOURCES  
STATE OF ARIZONA  
FIELD ENGINEERS REPORT

Mine CHEMEHUEVIS PLACERS

Date Sept. 6, 1940.

District Gold Wing, Mohave County

Engineer Elgin B. Holt

Subject:

SYNOPSIS REPORT

NOTE: On September 5, 1940, in company with Emery Blevins of Kingman, I made a rather hurried trip into the Chemehuevis or Mohave Mountains, Mohave County, Arizona, for the purpose of looking over certain gold placers in that area.

49 PLACERS: We first visited the 49 Placers, located in the foot hills on the north-eastern slope of the Mohave Mountains, which area is drained by the Franconia and Buck Mountain washes. To reach these placers, we traveled from Kingman along a county maintained road 20 miles to Yucca; thence along the same road 15 miles toward Topock; thence south from the Yucca-Topock road 10 miles to the old 49 Placer Camp, located in the centre of the placer area in question.

The 49 Placers were discovered during the 1860s and during that time and succeeding years work was carried on by several hundred placer miners, Here a "rag-town" mining camp sprung up in which were established stores, saloons, dance halls and boarding houses. The total gold production of these placers is not known.

AREA of these placers approximate three miles long by one mile wide. This area has been worked superficially for placer gold; but no deep workings were noted. To the south-west lie the Mohave Mountains. The mesas and foot hills of these mountains are composed of gravel beds near the surface, giving way to caliche beds below. Both the surface gravels and caliche (conglomerate) carry placer gold ranging in size from a grain of wheat to a grain of corn, per Mr. Blevins. Depth to bed rock ranges from a few feet near the edge of the mountains to probably 100 feet at a distance of one mile therefrom. No systematic exploratory work has been done. This area is traversed by canyon washes with gravel and conglomerate ridges between.

Mr. Blevins did some sampling in 49 Wash and states that the loose gravel in the bed of this wash, exposed for 3/4 mile, has a depth of 5 feet above the caliche and contains in excess of \$1.00 gold per cubic yard. Crossing a ridge near this wash is noted a distinct placer channel which has been worked to only a few feet depth, to the caliche, for 1500 feet in length and 50 feet in width.

Placer work has also been carried on in Moon wash, 1.5 miles west of 49 Wash. where two placer workers, in 1938, extracted \$1,000 in placer gold from a shaft 30 feet deep. Moon Wash is the main placer gulch of this area and is one of the prongs of Franconia Wash. The loose gravel in Moon Wash has a width of from 200 to 600 feet and placer gold has been noted down the Wash, per Blevins, for a distance of 3 miles; but this area remains unexplored to bed rock.

During 1939, a part of 49 Placers was sampled superficially by "The R. C. Huffman Company, 610 Brisbane Bldg., Buffalo, New York", but the result of this sampling, which due to its superficial character amounted to little, is not available.



WATER: Water for camp use may be obtained from the Scott well, located in Moon Wash, three miles from 49 Group. Water for heavy duty placer operations would have to be brought in by means of pumping and pipe line from Topock on the Colorado River, 20 miles distant from this placer. Elevation above sea level at Topock is 505 feet. Elevation at 49 Camp is 2375 feet. Hence, there would be a pumping lift of about 1870 feet.

OWNERSHIP: Peñ Blevins, Jack Hawkins and William St. Claire, of Kingman, Arizona, own two or three placer claims, on which he thinks they have kept up their annual assessment work, located along 49 Wash. He also stated that as far as he knows, the balance of the three sections of land covering the 49 Placer area is now open for location, except a section of Santa Fe R. R. land, covering a part of said area, and which can be obtained under an operating leasing arrangement from the Santa Fe company.

REMARKS: Not enough exploratory work has as yet been done on this area for an examining engineer to form an opinion as to its merits. However, from facts herein set forth I would say that the 49 Placers warrant a careful examination by any company financially able to carry out a large scale placer operation in case a thorough sampling of this property should prove it to have commercial values. However, unless a great number of test pits are sunk, or the ground should be prospected by drilling, it would be useless for any company to send an engineer for the purpose of sampling the old surface workings; as such sampling would be of no value at all in determining whether this placer has value or not.

In other words, I believe it would require at least \$50,000 to defray the cost of the test pits or bore holes referred to, in order to carry out a preliminary sampling of this property. The cost of testing the entire gold-bearing area would be considerably more.

#### MEXICAN OR RED HILLS PLACERS

We next visited the Mexican or Red Hills Placers, located at the south-western foot of the Chemehuevis or Mohave Mountains, about 18 miles south-east of Topock; an excellent county maintained dirt road connecting Topock with the said placers.

AREA of these placers approximates about a section of land only. These placers have been worked intermittently by small-scale dry methods for a great many years. The said area is hilly and placer gravel occurs and is confined to narrow sand washes.

Per J. H. Jones of Topock, during the winter of 1932-33, 30 placer miners extracted about \$1,200 worth of placer gold from the area in question.

E. Ross Housholder, Mining Engineer, of Kingman, Arizona, informs me that during 1937 these placers were sampled by a large dredging company with nil results. He has the results of this sampling in his files, which he would be willing to furnish interested parties for a reasonable fee.

From a personal inspection by me of this area, I was not very well impressed with its possibilities, although small parts of it might be made to pay, if properly equipped and managed, provided operators would get in and work themselves.

/sd/ Elgin B. Holt  
Field Engineer.

BORIANA (P) MONTAGE

**TIMA OIL AND MINING COMPANY**

**Founded 1953**

2242 East Lincoln Drive  
Phoenix, AZ, USA 85016-1143

Telephone:

Office: (602) 541-9009

Facsimile: (602) 954-0999

11/1992

OWNS COPPER WORLD AND

BORIANA TAILINGS

Dear Friend,

Thank you for your recent inquiry regarding a Tima Oil or Mining property.

The Tima Oil and Mining Company founded by my father Steve E. Tima has been involved with successful oil and mining operations in Arizona for almost half a century. Such world class assets as the Copper World Mine (1 million tons + ore), was acquired over a century ago from one of the founders of the Phelps Dodge Corporation. This is only one example of the caliber of property which TOMCO has become synonymous with over the years.

Here in the 90's as financial markets merge the globe and mineral resources become scarcer by the day, we realize that there is a growing need for such reserves as Gold, Platinum, Silver, Copper, Rhodium, Tungsten and Zinc. Thus, we have responded with properties which are not only very efficient to operate but also environmentally sound.

Whether you are looking for a solid long-term investment, asset diversification, or a successful high-yielding production property I invite you to familiarize yourself with TOMCO oil and mining properties.

Best Regards,



Caesar S. Tima  
Vice President



**TIMA OIL AND MINING COMPANY**  
**Founded 1953**

OK

H.C.

## I. COPPER WORLD PATENTED MINE

The "Copper World" Mine, is a famous, massive sulfide ore deposit containing mainly copper (4.5%) and zinc (10%-8%) with additional components such as platinum, silver and gold. Located in Mohave County, Arizona the property lies just 10 miles east of the Santa Fe railhead.

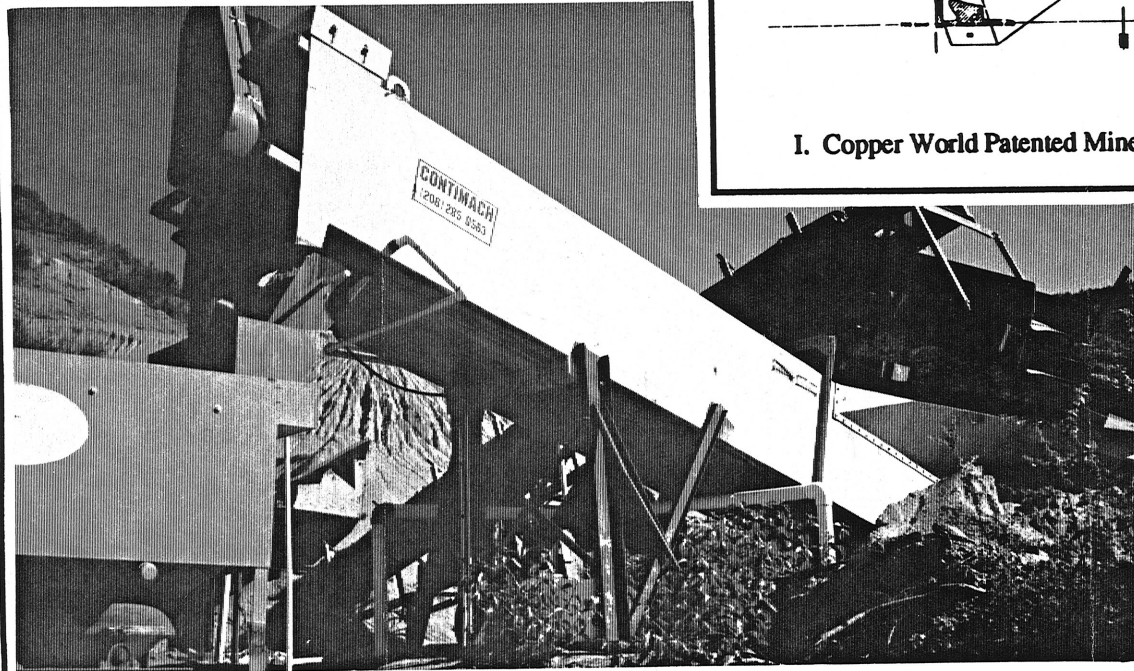
Full documentation is available by the US Government, Newmont Exploration, and Standard Metals. These reports indicate up to 1,489,924 tons of inferred ore.

## II. BORIANA TAILING PROJECT

The Boriana Tailing Project is a major deposit containing the tungsten and platinum groups. This project is located only 15 miles east of the Santa Fe railhead, and encompasses up to 600 acres of land.

Full documentation is available by the US Bureau of Mines, and indicates up to 1,700,000 tons, above ground. This material is currently ready for processing and shipping.

This property also includes 75% of the required processing equipment. This equipment was purchased and installed for the direct production requirements of the Boriana property and is in operative condition. Currently, over \$300,000.00 has been invested in mining equipment, and related expenditure. The Boriana Project has had a long history

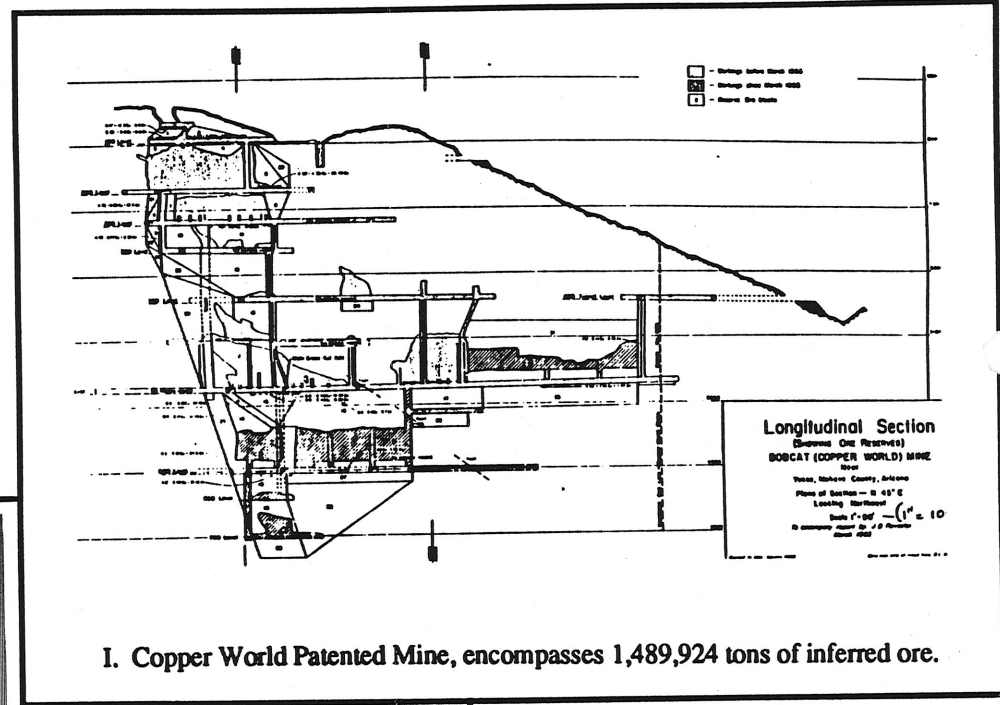


II. Boriana Tailing Project is composed of 1,700,000 tons, above ground and ready for shipment.

of successful assays, and is ready to produce. It's data clearly illustrates the magnitude of this venture and its potential as a multi-million dollar production project.

## III. THE BLACK SAND PROJECT

The Black Sand Project is a colossal conglomerate of gold, platinum, and silver. This project is located in a highly accessible location in Mohave County, Arizona and encompasses 2,500 acres of state land as well as 11,000 acres of BLM land.



I. Copper World Patented Mine, encompasses 1,489,924 tons of inferred ore.

## IV. ADDITIONAL PROPERTY INFORMATION

The Tima Oil and Mining Co. also possesses interests or partnerships in many other related operations and fields in Arizona. Additional information is available upon request.

Finally, we would like to thank you for your interest in our assets, and invite you to view them first hand. All of our properties offer flexible purchasing terms, and are available for immediate sale, lease, or trade for stock or real estate.

Once again, thank you and we look forward to hearing from you soon.

ARIZONA DEPARTMENT OF MINERAL RESOURCES  
MINERAL BUILDING, FAIRGROUNDS  
PHOENIX, ARIZONA

August 25, 1958

To the Owner or Operator of the Arizona Mining Property named below:

Chemehuevis Placers (Mohave County) gold  
(Property) (ore)

We have an old listing of the above property which we would like to have brought up to date.

Please fill out the enclosed Mine Owner's Report form with as complete detail as possible and attach copies of reports, maps, assay returns, shipment returns or other data which you have not sent us before and which might interest a prospective buyer in looking at the property.

*Frank P. Knight*

FRANK P. KNIGHT,  
Director.

Enc: Mine Owr

GOLD PLACER

Emery Blevins  
Kingman, Arizona

Report by E.B. Holt

Chemehuevis placers  
Mohave County

9-44

9-6-40

CHEMEHUEVIS PLACERS

Au

Mohave

8 - 11

T 15 N, R 18 W

J. Hawkins, Kingman unclaimed 9-14-46

May 27, 1957.

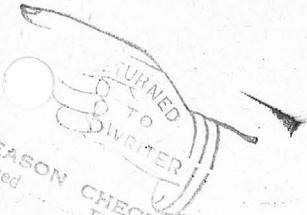
CHEMEHUEVIS PLACERS

MOHAVE COUNTY  
GOLD WING DIST.

This property idle. No information.

MARK GEMMILL

REFERENCE: ABM Bull. 180, p. 158, 161,  
163



PHENIX  
AUG 25  
630PM  
1958  
4RIL

**REASON CHECKED**

- Unclaimed
- Unknown
- Insufficient address
- Moved, Left no address
- No such office in state
- Do not return in this envelope

POSTAGE DUE 2 CENTS

~~Mr. Jack Hawkins  
Kingman  
Arizona~~

DEPARTMENT OF MINERAL RESOURCES  
STATE OF ARIZONA  
FIELD ENGINEERS REPORT

Mine CHEMEHUEVIS PLACERS

Date Sept. 6, 1940.

District Gold Wing, Mohave County

Engineer Elgin B. Holt

Subject:

SYNOPSIS REPORT

NOTE: On September 5, 1940, in company with Emery Blevins of Kingman, I made a rather hurried trip into the Chemehuevis or Mohave Mountains, Mohave County, Arizona, for the purpose of looking over certain gold placers in that area.

49 PLACERS: We first visited the 49 Placers, located in the foot hills on the north-eastern slope of the Mohave Mountains, which area is drained by the Franconia and Buck Mountain washes. To reach these placers, we traveled from Kingman along a county maintained road 20 miles to Yucca; thence along the same road 15 miles toward Topock; thence south from the Yucca-Topock road 10 miles to the old 49 Placer Camp, located in the centre of the placer area in question.

The 49 Placers were discovered during the 1860s and during that time and succeeding years work was carried on by several hundred placer miners, Here a "rag-town" mining camp sprung up in which were established stores, saloons, dance halls and boarding houses. The total gold production of these placers is not known.

AREA of these placers approximate three miles long by one mile wide. This area has been worked superficially for placer gold; but no deep workings were noted. To the south-west lie the Mohave Mountains. The mesas and foot hills of these mountains are composed of gravel beds near the surface, giving way to caliche beds below. Both the surface gravels and caliche (conglomerate) carry placer gold ranging in size from a grain of wheat to a grain of corn, per Mr. Blevins. Depth to bed rock ranges from a few feet near the edge of the mountains to probably 100 feet at a distance of one mile therefrom. No systematic exploratory work has been done. This area is traversed by canyon washes with gravel and conglomerate ridges between.

Mr. Blevins did some sampling in 49 Wash and states that the loose gravel in the bed of this wash, exposed for  $3/4$  mile, has a depth of 5 feet above the caliche and contains in excess of \$1.00 gold per cubic yard. Crossing a ridge near this wash is noted a distinct placer channel which has been worked to only a few feet depth, to the caliche, for 1500 feet in length and 50 feet in width.

Placer work has also been carried on in Moon wash, 1.5 miles west of 49 Wash. where two placer workers, in 1938, extracted \$1,000 in placer gold from a shaft 30 feet deep. Moon Wash is the main placer gulch of this area and is one of the prongs of Franconia Wash. The loose gravel in Moon Wash has a width of from 200 to 600 feet and placer gold has been noted down the Wash, per Blevins, for a distance of 3 miles; but this area remains unexplored to bed rock.

During 1939, a part of 49 Placers was sampled superficially by "The R. C. Huffman Company, 610 Brisbane Bldg., Buffalo, New York", but the result of this sampling, which due to its superficial character amounted to little, is not available.

WATER: Water for camp use may be obtained from the Scott well, located in Moon Wash, three miles from 49 Group. Water for heavy duty placer operations would have to be brought in by means of pumping and pipe line from Topock on the Colorado River, 20 miles distant from this placer. Elevation above sea level at Topock is 505 feet. Elevation at 49 Camp is 2375 feet. Hence, there would be a pumping lift of about 1870 feet.

OWNERSHIP: Pe# Blevins, Jack Hawkins and William St. Claire, of Kingman, Arizona, own two or three placer claims, on which he thinks they have kept up their annual assessment work, located along 49 Wash. He also stated that as far as he knows, the balance of the three sections of land covering the 49 Placer area is now open for location, except a section of Santa Fe R. R. land, covering a part of said area, and which can be obtained under an operating leasing arrangement from the Santa Fe company.

REMARKS: Not enough exploratory work has as yet been done on this area for an examining engineer to form an opinion as to its merits. However, from facts herein set forth I would say that the 49 Placers warrant a careful examination by any company financially able to carry out a large scale placer operation in case a thorough sampling of this property should prove it to have commercial values. However, unless a great number of test pits are sunk, or the ground should be prospected by drilling, it would be useless for any company to send an engineer for the purpose of sampling the old surface workings; as such sampling would be of no value at all in determining whether this placer has value or not.

In other words, I believe it would require at least \$50,000 to defray the cost of the test pits or bore holes referred to, in order to carry out a preliminary sampling of this property. The cost of testing the entire gold-bearing area would be considerably more.

#### MEXICAN OR RED HILLS PLACERS

We next visited the Mexican or Red Hills Placers, located at the south-western foot of the Chemehuevis or Mohave Mountains, about 18 miles south-east of Topock; an excellent county maintained dirt road connecting Topock with the said placers.

AREA of these placers approximates about a section of land only. These placers have been worked intermittently by small-scale dry methods for a great many years. The said area is hilly and placer gravel occurs and is confined to narrow sand washes.

Per J. H. Jones of Topock, during the winter of 1932-33, 30 placer miners extracted about \$1,200 worth of placer gold from the area in question.

E. Ross Housholder, Mining Engineer, of Kingman, Arizona, informs me that during 1937 these placers were sampled by a large dredging company with nil results. He has the results of this sampling in his files, which he would be willing to furnish interested parties for a reasonable fee.

From a personal inspection by me of this area, I was not very well impressed with its possibilities, although small parts of it might be made to pay, if properly equipped and managed, provided operators would get in and work themselves.

/sd/ Elgin B. Holt  
Field Engineer.



## DEPARTMENT OF MINERAL RESOURCES, 1939

News Items

Date

Kirkman, Ariz.

12/4/39

Mine

Location

Owner

Address

Operating Co.

Address

Pres.

Genl. Mgr.

Mine Supt.

Mill Supt.

Principal Metals

Men Employed

Production Rate

Mill, Type &amp; Capacity

Power, Amt. &amp; Type

Signed - over -

(Over)

Chemehuevi's Placers.

Mohave Co.

R. C. Huffman Construc-

tion Co., 610 Bris-

bane Bldg., Buffalo, N.Y.

This company, which test-

ed out the Mackey

placers at Quilotoa

during Oct. and Nov.,

now has engineers

sinking test pits

and sampling the

Chemehuevi's plac-

ers, located in

the region of Franconia

Wash., 20 miles

S. E. of Topock, Mohave Co.

Present Operations

Mr. R. B. Haffman, E. M.,  
and A. F. Eberwine, Vice-  
President of the Haff-  
man Construction Co.,

New Work Planned

are in active  
charge of testing  
work at Chemehuevis.

These people are in-  
vestigating various

Misc. Notes

placers in Ariz-  
ona, with a view to  
putting on a large  
yardage operation,  
providing they can  
find a placer that  
will meet their re-  
quirements.

E. B. Holt