



CONTACT INFORMATION

Mining Records Curator
Arizona Geological Survey
1520 West Adams St.
Phoenix, AZ 85007
602-771-1601
<http://www.azgs.az.gov>
inquiries@azgs.az.gov

The following file is part of the

Arizona Department of Mines and Mineral Resources Mining Collection

ACCESS STATEMENT

These digitized collections are accessible for purposes of education and research. We have indicated what we know about copyright and rights of privacy, publicity, or trademark. Due to the nature of archival collections, we are not always able to identify this information. We are eager to hear from any rights owners, so that we may obtain accurate information. Upon request, we will remove material from public view while we address a rights issue.

CONSTRAINTS STATEMENT

The Arizona Geological Survey does not claim to control all rights for all materials in its collection. These rights include, but are not limited to: copyright, privacy rights, and cultural protection rights. The User hereby assumes all responsibility for obtaining any rights to use the material in excess of "fair use."

The Survey makes no intellectual property claims to the products created by individual authors in the manuscript collections, except when the author deeded those rights to the Survey or when those authors were employed by the State of Arizona and created intellectual products as a function of their official duties. The Survey does maintain property rights to the physical and digital representations of the works.

QUALITY STATEMENT

The Arizona Geological Survey is not responsible for the accuracy of the records, information, or opinions that may be contained in the files. The Survey collects, catalogs, and archives data on mineral properties regardless of its views of the veracity or accuracy of those data.

PRINTED: 12/17/2002

ARIZONA DEPARTMENT OF MINES AND MINERAL RESOURCES AZMILS DATA

PRIMARY NAME: CHARLIE D

ALTERNATE NAMES:
OLD SOLDIER MINE

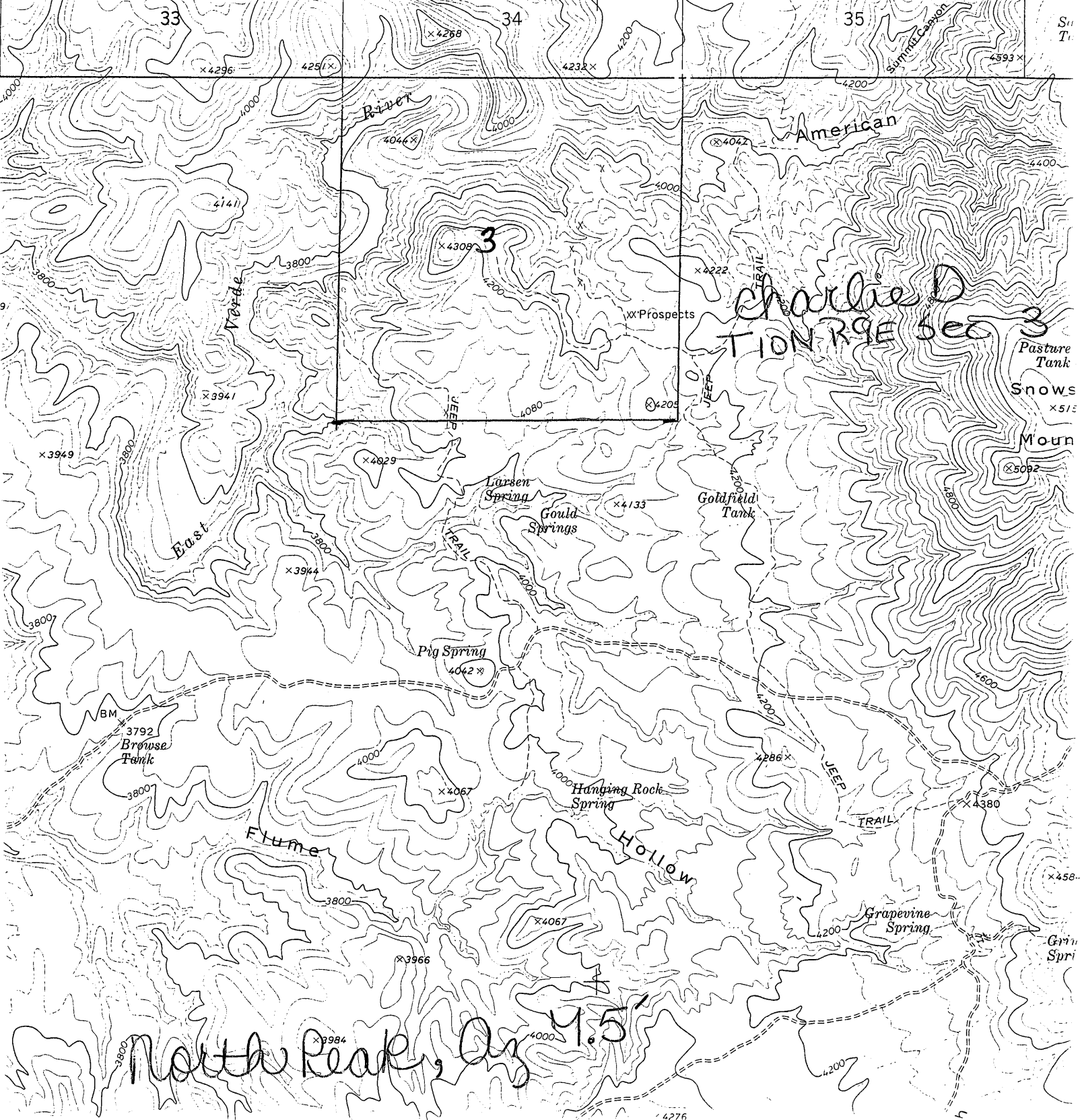
GILA COUNTY MILS NUMBER: 465B

LOCATION: TOWNSHIP 10 N RANGE 9 E SECTION 3 QUARTER E2
LATITUDE: N 34DEG 14MIN 22SEC LONGITUDE: W 111DEG 25MIN 04SEC
TOPO MAP NAME: NORTH PEAK - 7.5 MIN

CURRENT STATUS: EXP PROSPECT

COMMODITY:
GOLD

BIBLIOGRAPHY:
ADMMR CHARLIE D FILE
BLM AMC FILE 70766



Charlie D
TION RGE Sec 3

North Peak, Az 4.5'

Pasture Tank
Snows
Moun

Grin
Spri

CHARLIE D

GILA COUNTY
T10N R9E Sec 3 E2

WR RRB 2-29-80: Bruce Gillette, 460 S. Stapley Drive, Mesa, 85204, and Warren Koneman, 413 N. Brimhall, Mesa 85203, were in to discuss cyaniding. They have three claims called the Charlie "B", nine miles west of Payson. I talked them into doing a good job of sampling before worrying about treatment methods.

WR KAP 8-14-81: A report was received that initial pilot testing of a cyanide heap leaching operation on the Charlie D Mine showed that open pit mining of the deposit produces too much dilution. The operation was reportedly under the direction of Charles W. Dimbat (Sometimes referred to as Dr. Dimbat). BLM data shows the Charlie D #1-3 claims to be in Sec. 3, T10N, R9E.

WR KAP 12-4-81: Dwayne Grey is reported to have opened up and subsequently closed down the Charlie D cyanide heap leaching operation in the Green Valley District, Gila County.

DEPARTMENT OF MINERAL RESOURCES

STATE OF ARIZONA

FIELD ENGINEERS REPORT

Mine OLD SOLDIER MINE Date January 25, 1963
District Green Valley District, Gila County Engineer Lewis A. Smith
Subject: Letter from Alex L. Singley, Payson 1-23-63.

Location: West foot of Snowstorm Mountain, 4 miles W. of Payson.
S-2, T 10 N, R 9 E.

Owner: ?

Work: 85' shaft.

Geology: The vein lies in greenstone of the Mazatzal Formation. The veins in this area generally strike NW-SE or N. According to Singley this vein varies from 1" to 6-8" and is reported to have been mined in the period prior to 1912. One inch of this vein is said to have run up to \$1,000 per ton in gold. High grade, narrow pinching and swelling veins have been found in a number of places in this area and to the south for 3 or 4 miles, such as the Zulu and Treasure Chest. These two mines have had appreciable production many years ago. Others have had small but relatively rich pockets.