



CONTACT INFORMATION

Mining Records Curator
Arizona Geological Survey
1520 West Adams St.
Phoenix, AZ 85007
602-771-1601
<http://www.azgs.az.gov>
inquiries@azgs.az.gov

The following file is part of the

Arizona Department of Mines and Mineral Resources Mining Collection

ACCESS STATEMENT

These digitized collections are accessible for purposes of education and research. We have indicated what we know about copyright and rights of privacy, publicity, or trademark. Due to the nature of archival collections, we are not always able to identify this information. We are eager to hear from any rights owners, so that we may obtain accurate information. Upon request, we will remove material from public view while we address a rights issue.

CONSTRAINTS STATEMENT

The Arizona Geological Survey does not claim to control all rights for all materials in its collection. These rights include, but are not limited to: copyright, privacy rights, and cultural protection rights. The User hereby assumes all responsibility for obtaining any rights to use the material in excess of "fair use."

The Survey makes no intellectual property claims to the products created by individual authors in the manuscript collections, except when the author deeded those rights to the Survey or when those authors were employed by the State of Arizona and created intellectual products as a function of their official duties. The Survey does maintain property rights to the physical and digital representations of the works.

QUALITY STATEMENT

The Arizona Geological Survey is not responsible for the accuracy of the records, information, or opinions that may be contained in the files. The Survey collects, catalogs, and archives data on mineral properties regardless of its views of the veracity or accuracy of those data.

PRINTED: 12/17/2002

ARIZONA DEPARTMENT OF MINES AND MINERAL RESOURCES AZMILS DATA

PRIMARY NAME: CHALLENGE 1-3 PROPERTY

ALTERNATE NAMES:

GILA COUNTY MILS NUMBER: 369

LOCATION: TOWNSHIP 7 N RANGE 14 E SECTION 2 QUARTER C
LATITUDE: N 33DEG 58MIN 50SEC LONGITUDE: W 110DEG 53MIN 00SEC
TOPO MAP NAME: MCFADDEN PEAK - 15 MIN

CURRENT STATUS: EXP PROSPECT

COMMODITY:

ASBESTOS LONG FIBER
ASBESTOS SHORT FIBER

BIBLIOGRAPHY:

ADMMR CHALLENGE 1-3 MINE FILE

PRIMARY NAME: CHALLENGE 1-3 PROPERTY

ALTERNATE NAMES:

GILA COUNTY MILS NUMBER:369

LOCATION: TOWNSHIP 7 N RANGE 14 E SECTION 2 QTR. CENTER
LATITUDE:N 33DEG 58MIN 50SEC LONGITUDE:W 110DEG 53MIN 00SEC
TOPO MAP NAME: MCFADDEN PEAK - 15 MIN

CURRENT STATUS: EXP PROSPECT

COMMODITY:

ASBESTOS - (M) LONG FIBER -
PRIMARY

ASBESTOS - (M) SHORT FIBER -
COPRODUCT

BIBLIOGRAPHY:

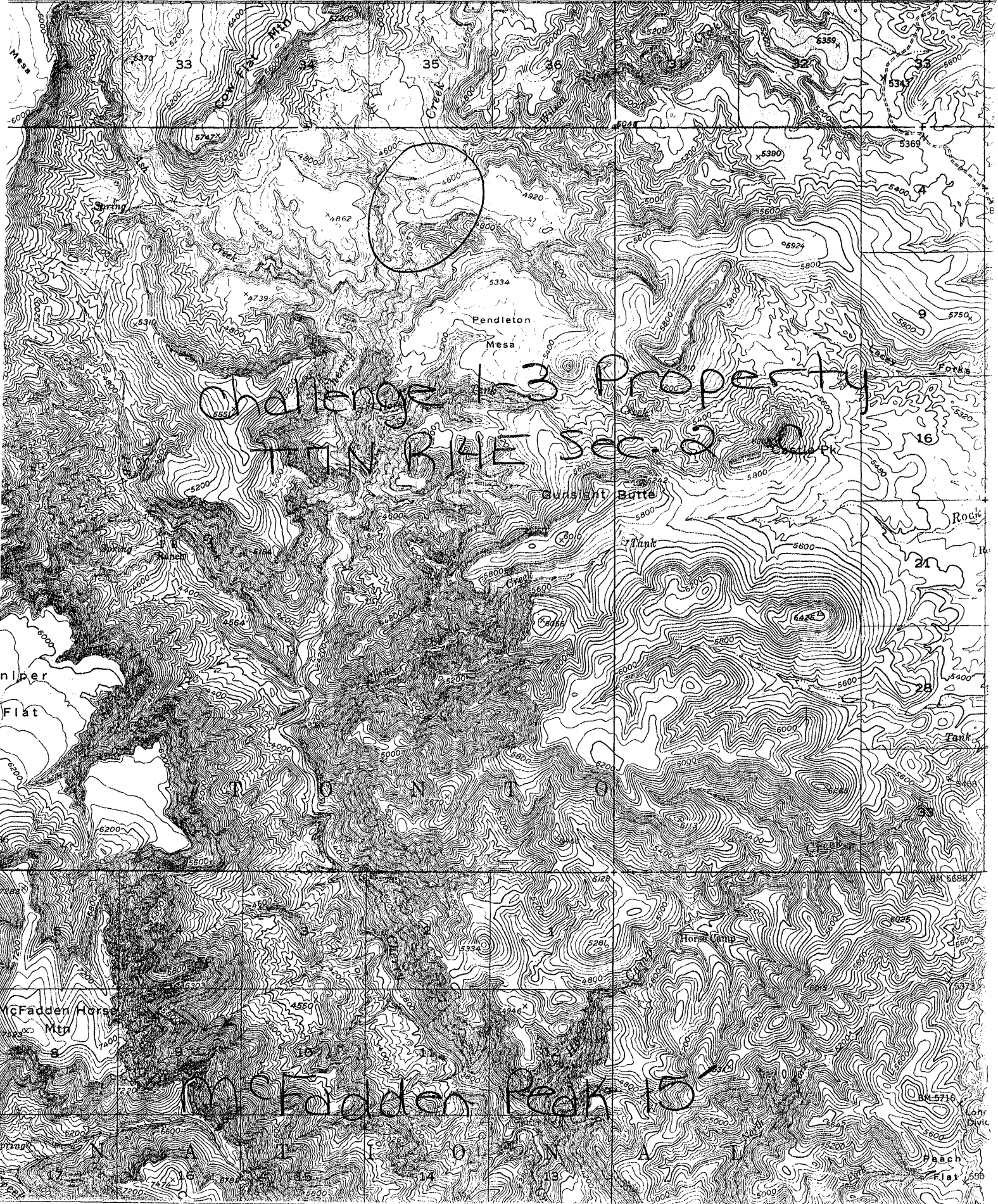
ADMR CHALLENGE 1-3 MINE FILE

UNITED STATES
DEPARTMENT OF THE ARMY
CORPS OF ENGINEERS

55' R. 14 E.

50'

R. 15 E.



DEPARTMENT OF MINERAL RESOURCES

STATE OF ARIZONA
FIELD ENGINEERS REPORT

Mine Challenge 1-3

Date June 30, 1961

District Upper Cherry Creek Dist., Gila Co.

Engineer Lewis A. Smith

Subject: Interview with Mrs. Hunty.

Claims: 3 unpatented

Owners: Jewel Dilla Hunty, 1422 A Ave., Glendale, Arizona and C. T. Brice.

Location: Approx. Sec. 2, T. 7 N., R. 14 E.

Mineral: Asbestos

Work: According to Mrs. Hunty, an area 300 x 150 feet was bulldozed off and a mineralized serpentine zone was uncovered in association with diabase sills and dikes. The asbestos-bearing zone varies from 1 to 4 feet thick and the asbestos bands range from 3/8 up to over 2 inches thick. 3 principal bands are seen. The specimens, that she brought in ranged from semi-harsh to soft. She stated that sometimes two or more of these types can occur in the same zone. She also stated that there were in places several alternating beds of serpentine and asbestos. A big nearly vertical diabase dike is said to have cut off the asbestos bearing beds on one side. It is probable that the diabase dike is pre-mineral and acted as a dam to the mineralizing solutions. Some of the best fiber strands are said to be near this dike.