



## **CONTACT INFORMATION**

Mining Records Curator  
Arizona Geological Survey  
1520 West Adams St.  
Phoenix, AZ 85007  
602-771-1601  
<http://www.azgs.az.gov>  
[inquiries@azgs.az.gov](mailto:inquiries@azgs.az.gov)

The following file is part of the

Arizona Department of Mines and Mineral Resources Mining Collection

## **ACCESS STATEMENT**

These digitized collections are accessible for purposes of education and research. We have indicated what we know about copyright and rights of privacy, publicity, or trademark. Due to the nature of archival collections, we are not always able to identify this information. We are eager to hear from any rights owners, so that we may obtain accurate information. Upon request, we will remove material from public view while we address a rights issue.

## **CONSTRAINTS STATEMENT**

The Arizona Geological Survey does not claim to control all rights for all materials in its collection. These rights include, but are not limited to: copyright, privacy rights, and cultural protection rights. The User hereby assumes all responsibility for obtaining any rights to use the material in excess of "fair use."

The Survey makes no intellectual property claims to the products created by individual authors in the manuscript collections, except when the author deeded those rights to the Survey or when those authors were employed by the State of Arizona and created intellectual products as a function of their official duties. The Survey does maintain property rights to the physical and digital representations of the works.

## **QUALITY STATEMENT**

The Arizona Geological Survey is not responsible for the accuracy of the records, information, or opinions that may be contained in the files. The Survey collects, catalogs, and archives data on mineral properties regardless of its views of the veracity or accuracy of those data.

PRINTED: 12/17/2002

ARIZONA DEPARTMENT OF MINES AND MINERAL RESOURCES AZMILS DATA

PRIMARY NAME: CERRO COLORADO MTNS PERLITE

ALTERNATE NAMES:

PIMA COUNTY MILS NUMBER: 1162

LOCATION: TOWNSHIP 20 S RANGE 11 E SECTION 6 QUARTER W  
LATITUDE: N 31DEG 43MIN 25SEC LONGITUDE: W 111DEG 15MIN 49SEC  
TOPO MAP NAME: CERRO COLORADO - 7.5 MIN

CURRENT STATUS: RAW PROSPECT

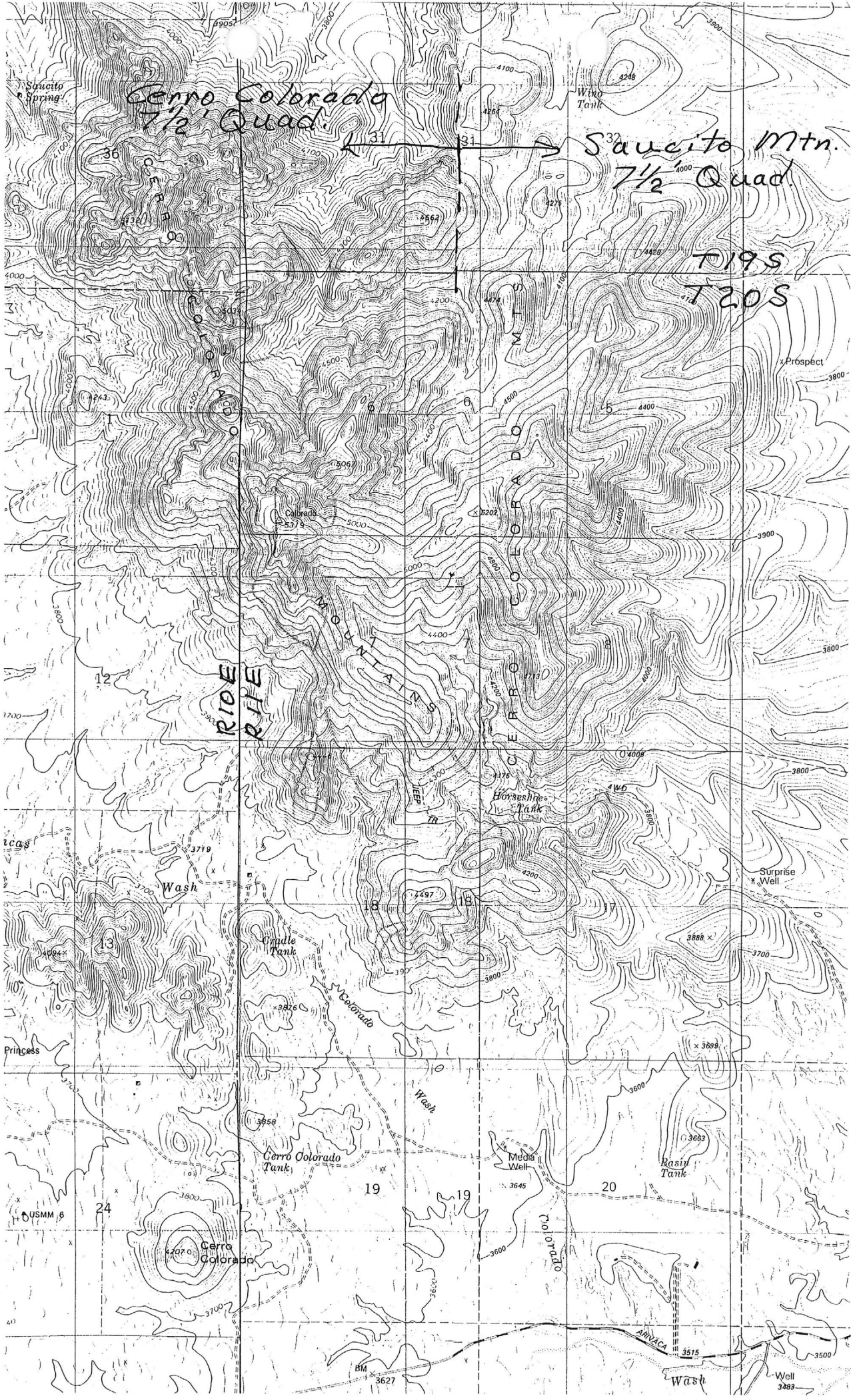
COMMODITY:  
PERLITE

BIBLIOGRAPHY:

PEIRCE, H.W., 1969, PERLITE IN MINERAL & WATER  
RESOURCESS OF AZ: AZ BUR. MINES BULL. 180,  
P. 403-407  
SMITH, RUSSELL, 1966, GEOL OF THE CERRO  
COLORADO MTNS, PIMA CTY, AZ: AZ GEOL SOCIETY  
DIGEST VOL 8, P. 131-145  
PHILLIPS, K.A., 1987, AZ INDUSTRIAL MINERALS:  
ADMMR MINERAL RPT MR-4, P. 136  
OCCURRENCES EXTEND INTO SECS. 7, 17 & 18,  
T20S, R11E, SEC. 1, T20S, R10E, AND SEC. 31,  
T19S, R11E  
OCCURRENCES EXTEND ONTO THE SAUCITO MTN 7.5  
MIN QUADRANGLE  
ADMMR CERRO COLORADO MTNS PERLITE FILE







October 19, 1994

Philip Christianson  
P.O. Box 4215  
Tubac, Arizona 85646

Dear Philip Christianson:

Thank you for your inquiry about the perlite occurrence in the Cerro Colorado Mountains.

As we discussed on the telephone the Cerro Colorado Mountains Perlite occurrence is a raw prospect. It has been described in Russell Smith's report on the geology of the Cerro Colorado Mountains in the Arizona Geological Society's Digest Number 8 published in 1966. There he describes it as follows: "Dark gray to pinkish-gray stringers of perlitic glass occur in increasing abundance in the upper of the rhyolite vitrophyre until they form a continuous layer from 100 to 200 feet thick in most of the higher cliffs and ridges." (The underlining is mine.) A copy of page 137 from the Digest is enclosed.

I have made a composite topographic map from portions of the Cerro Colorado and the Saucito Mtn. 7½ minute maps and outlined the perlitic outcrops from Mr. Smith's map. I would recommend that you purchase original copies of the two U.S. Geological Survey (USGS) topographic maps for your use when prospecting the area. The USGS has an office in Tucson at 340 North Sixth Avenue.

From our information I doubt that the perlite occurrence has been prospected much. We have no information on the quality or popping characteristics of the material.

I recommend that you start by determining who owns the mineral rights to the occurrence and then attempt to obtain either permission to access and sample the deposit if it is on private land or locate mining claims if the deposit is located on public lands. I have enclosed a copy of our book *Manual for Determination of Status and Ownership, Arizona Mineral and Water Rights* which should help you in determining the land status.

Access to the occurrences may be difficult. The USGS maps show a 4WD trail to one of the perlite areas, but there is no way of knowing the road's condition. Most of the occurrences have no apparent developed access.

Along with the items I have already mentioned I am enclosing a copy from Russell Smith's geologic map on which I have colored the area of perlite and a copy of our AZMILS bibliography for the occurrence.

Please contact me if you need more assistance and please keep me posted on your progress.

Sincerely;

Ken A. Phillips  
Chief engineer

Enclosures