



## **CONTACT INFORMATION**

Mining Records Curator  
Arizona Geological Survey  
1520 West Adams St.  
Phoenix, AZ 85007  
602-771-1601  
<http://www.azgs.az.gov>  
[inquiries@azgs.az.gov](mailto:inquiries@azgs.az.gov)

The following file is part of the

Arizona Department of Mines and Mineral Resources Mining Collection

## **ACCESS STATEMENT**

These digitized collections are accessible for purposes of education and research. We have indicated what we know about copyright and rights of privacy, publicity, or trademark. Due to the nature of archival collections, we are not always able to identify this information. We are eager to hear from any rights owners, so that we may obtain accurate information. Upon request, we will remove material from public view while we address a rights issue.

## **CONSTRAINTS STATEMENT**

The Arizona Geological Survey does not claim to control all rights for all materials in its collection. These rights include, but are not limited to: copyright, privacy rights, and cultural protection rights. The User hereby assumes all responsibility for obtaining any rights to use the material in excess of "fair use."

The Survey makes no intellectual property claims to the products created by individual authors in the manuscript collections, except when the author deeded those rights to the Survey or when those authors were employed by the State of Arizona and created intellectual products as a function of their official duties. The Survey does maintain property rights to the physical and digital representations of the works.

## **QUALITY STATEMENT**

The Arizona Geological Survey is not responsible for the accuracy of the records, information, or opinions that may be contained in the files. The Survey collects, catalogs, and archives data on mineral properties regardless of its views of the veracity or accuracy of those data.

PRINTED: 12/17/2002

ARIZONA DEPARTMENT OF MINES AND MINERAL RESOURCES AZMILS DATA

PRIMARY NAME: CATO CLAIMS

ALTERNATE NAMES:

GILA COUNTY MILS NUMBER: 414B

LOCATION: TOWNSHIP 8 N RANGE 15 E SECTION 35 QUARTER NW  
LATITUDE: N 33DEG 59MIN 45SEC LONGITUDE: W 110DEG 47MIN 15SEC  
TOPO MAP NAME: MCFADDEN PEAK - 15 MIN

CURRENT STATUS: EXP PROSPECT

COMMODITY:  
BARIUM BARITE

BIBLIOGRAPHY:  
ADMMR CATO CLAIMS FILE

PRIMARY NAME: CATO CLAIMS

ALTERNATE NAMES:

GILA COUNTY MILS NUMBER:414B

LOCATION: TOWNSHIP 8 N RANGE 15 E SECTION 35 QTR. NW 1/4  
LATITUDE:N 33DEG 59MIN 45SEC LONGITUDE:W 110DEG 47MIN 15SEC  
TOPO MAP NAME: MCFADDEN PEAK - 15 MIN

CURRENT STATUS: EXP PROSPECT

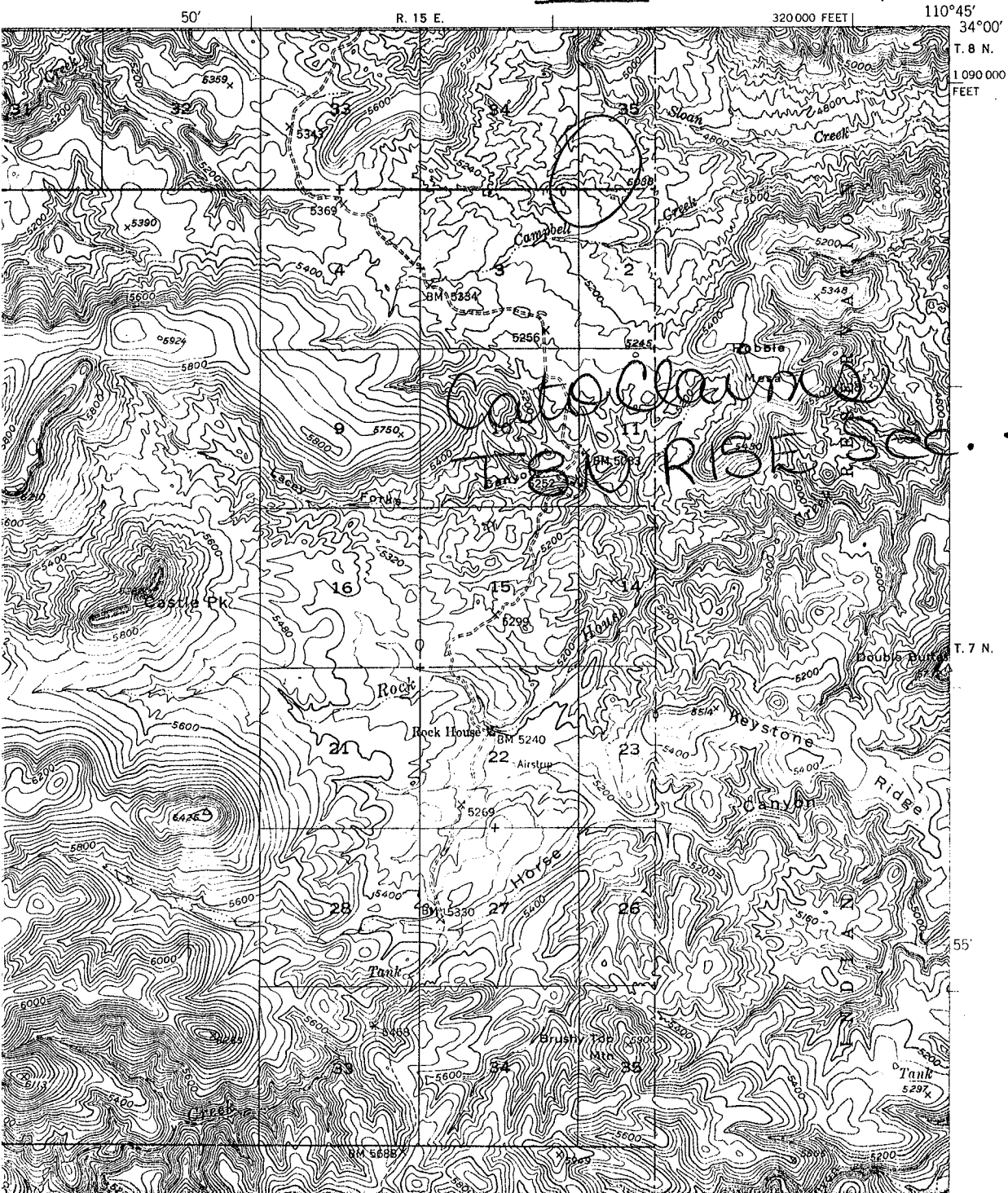
COMMODITY:

ASBESTOS-PRIMARY

BIBLIOGRAPHY:

ADMR CATO CLAIMS FILE

MC FADDEN PEAK QUADRANGLE  
ARIZONA-GILA CO.  
15 MINUTE SERIES (TOPOGRAPHIC)



35 NW 1/4

DEPARTMENT OF MINERAL RESOURCES

STATE OF ARIZONA

FIELD ENGINEERS REPORT

Mine Cato Claims

Date May 23, 1961

District Upper Cherry Creek, Gila County

Engineer Lewis A. Smith

Subject: Interview with Henry Cato (owner).

Property: 2 unpatented claims.

Location: Adjacent to Sloan Creek Mine (on south) of Roger Kyle. (NW $\frac{1}{4}$  35, T. 8 N., R. 15 E.) near Fort Apache Reservation line.

Work: Location work only.

Geology: The asbestos lies in a serpentinized bed in the Mescal Limestone near to a diabase sill. So far the asbestos band is thin, but shows an indication of widening.