



CONTACT INFORMATION

Mining Records Curator
Arizona Geological Survey
1520 West Adams St.
Phoenix, AZ 85007
602-771-1601
<http://www.azgs.az.gov>
inquiries@azgs.az.gov

The following file is part of the

Arizona Department of Mines and Mineral Resources Mining Collection

ACCESS STATEMENT

These digitized collections are accessible for purposes of education and research. We have indicated what we know about copyright and rights of privacy, publicity, or trademark. Due to the nature of archival collections, we are not always able to identify this information. We are eager to hear from any rights owners, so that we may obtain accurate information. Upon request, we will remove material from public view while we address a rights issue.

CONSTRAINTS STATEMENT

The Arizona Geological Survey does not claim to control all rights for all materials in its collection. These rights include, but are not limited to: copyright, privacy rights, and cultural protection rights. The User hereby assumes all responsibility for obtaining any rights to use the material in excess of "fair use."

The Survey makes no intellectual property claims to the products created by individual authors in the manuscript collections, except when the author deeded those rights to the Survey or when those authors were employed by the State of Arizona and created intellectual products as a function of their official duties. The Survey does maintain property rights to the physical and digital representations of the works.

QUALITY STATEMENT

The Arizona Geological Survey is not responsible for the accuracy of the records, information, or opinions that may be contained in the files. The Survey collects, catalogs, and archives data on mineral properties regardless of its views of the veracity or accuracy of those data.

PRINTED: 12/18/2002

ARIZONA DEPARTMENT OF MINES AND MINERAL RESOURCES AZMILS DATA

PRIMARY NAME: CATALINA MARBLE QUARRY

ALTERNATE NAMES:

SAN FRANCISCO MARBLE
TORTOLITA MTN MARBLE
WHITE ROCK MARBLE

PINAL COUNTY MILS NUMBER: 754

LOCATION: TOWNSHIP 10 S RANGE 13 E SECTION 32 QUARTER NE
LATITUDE: N 32DEG 31MIN 10SEC LONGITUDE: W 111DEG 01MIN 10SEC
TOPO MAP NAME: TORTOLITA MTS - 7.5 MIN

CURRENT STATUS: PAST PRODUCER

COMMODITY:

STONE MARBLE CB
STONE LIMESTONE CB
CALCIUM LIMESTONE

BIBLIOGRAPHY:

ADMMR CATALINA MARBLE QUARRY FILE
SHENK, JONATHAN, 1985, PRELIMINARY REPT ON AZ
MARBLE OCCURENCES & PROD. P7. IN GEOL FILE

DEPARTMENT OF MINERAL RESOURCES

STATE OF ARIZONA

FIELD ENGINEERS REPORT

Mine Crystal White Rock Co. Marble
Crushing & Screening Plant
District Pima County

Date Dec. 18, 1961

Engineer Axel L. Johnson

Subject: Field Engineers Report. Information from Harold J. Trowbridge

Reference: Report of Dec. 1, 1960.

Present Status: Closed down.

Review of Recent Operations: Mr. Trowbridge reports that the plant operated until about Oct. 15, 1961, when they were forced to close down on account of financial difficulties. Mr. Trowbridge stated that his company will not reopen the plant. It was also reported that Baldo Hernandez, who owns the crushing and screening equipment at the plant, is negotiating for a lease of the plant to another party.

DEPARTMENT OF MINERAL RESOURCES

STATE OF ARIZONA

FIELD ENGINEERS REPORT

Mine ¹ Crystal White Rock Co. Marble
Crushing & Screening Plant

Date Dec. 1, 1960

District Pima County

Engineer Axel L. Johnson

Subject: Field Engineers Report. Personal visit & information from Thomas Williams, Mgr.

Location At 1140 N. Anita Ave., Tucson, Arizona.

Owners Plant site and part of the equipment is owned by the Crystal White Rock Co. Most of the crushing and screening machinery in the plant is owned by Baldo Hernandez, 4447 E. Speedway Blvd., Tucson, and leased to the operators, Crystal White Rock Co. on a tonnage basis.

Operators Crystal White Rock Co., 1140 N. Anita, Tucson, Arizona.

Owners of the ~~company~~ ~~company~~ ~~company~~ company are;
Harold J. Trowbridge, 7081 Taos Place, Tucson ---- 1/2 interest
Dete Edwards, 5951 E. Oak Ave., Tucson ----- 1/2 interest
Thomas Williams, 1140 N. Anita Ave., Tucson is the Plant Manager.

Principal Product Crushed white marble.

Present Activity Hauling the marble from the San Francisco Marble Quarry N. of Tucson.
Crushing & screening the marble at the plant.
Selling and delivering the marble to customers in Tucson.
2 men working. Production 15 to 20 tons per day.

Plant Operations The maximum capacity of the plant is about 50 tons per day. However, since the crude marble must be hauled from the quarry and the finished marble products must be delivered to the customers, the crushing and screening plant is only being operated about one-third of the time.

The plant consists of (1) a 15 ton ore bin, (2) an 18 in. jaw crusher, (3) a 14 in. x 20 ft. conveyor belt, (4) a set of 14 in. rolls, (5) a bucket elevator, 22 ft. in height, and a set of vibrating screens, triple deck.

The oversize from the vibrating screens (plus 5/8 in.) is returned to the rolls for regrinding.

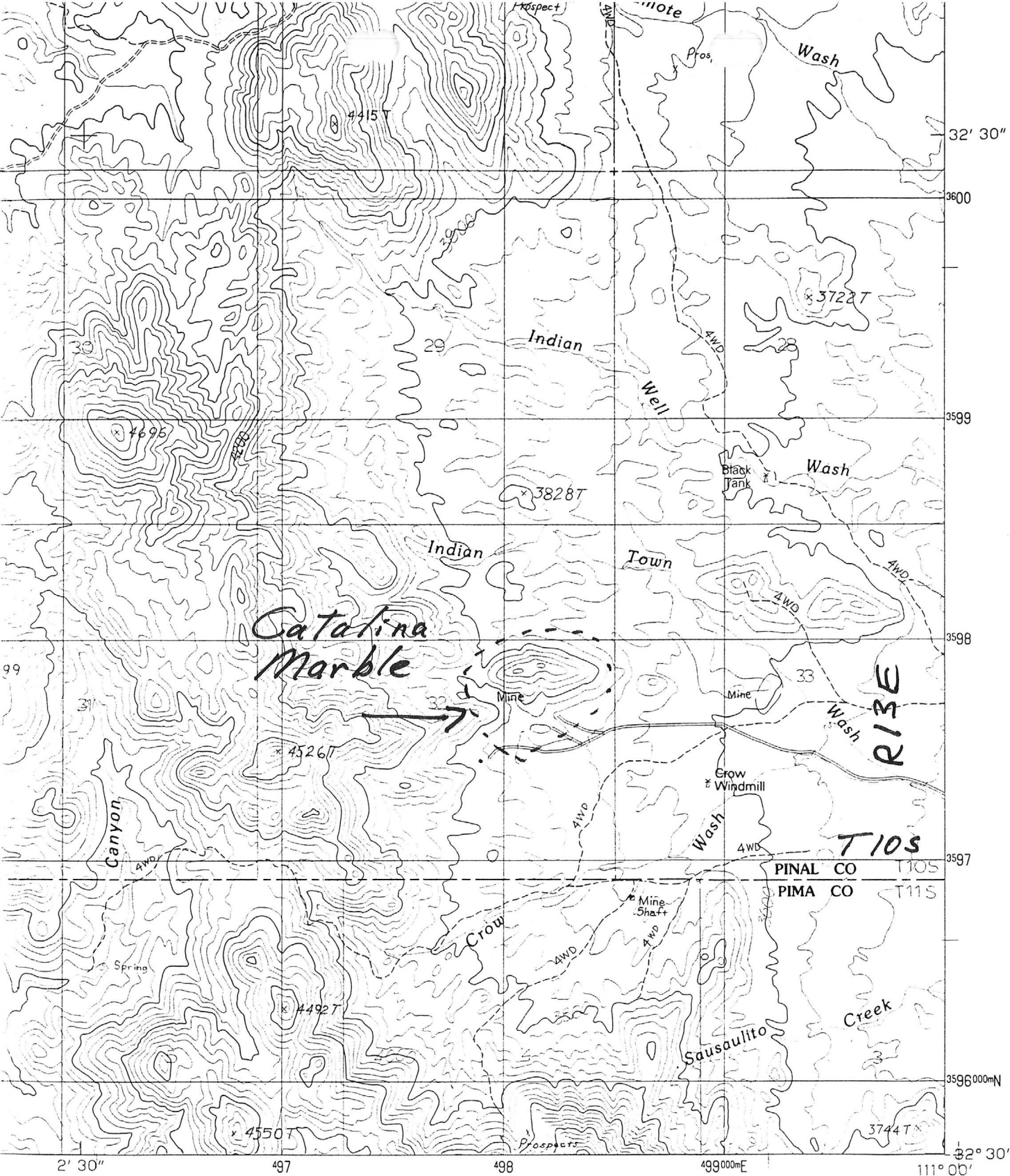
5 sizes of crushed marble is produced ---- 1/2 in., 3/8 in., 30 mesh, 16 mesh, and sand size.

Markets and Prices The crushed marble is sold to roofers and landscapers, and also by retail to individual users.

The prices quoted by Mr. Williams are as follows:

Wholesale : \$ 16.00 per ton for the 3/8" and 1/2" size, delivered.
16.00 per ton for the sand size, delivered.

~~xxxx~~ \$ 1.15 per 100 lb. for the 30 m. & 16 m. del.
Retail : \$ 23.00 per ton for all sizes.



DIGITAL SURVEY RESTON VIRGINIA 1988



QUADRANGLE LOCATION

1	2	3	1 Durham Hills 2 Chief Butte 3 Fortified Peak
4		5	4 Desert Peak 5 Oracle Junction 6 Marana 7 Ruelas Canyon

ROAD LEGEND

Improved Road
Unimproved Road
Trail

Interstate Route U.S. Route State Route

TORTOLITA MOUNTAINS, ARIZONA

PROVISIONAL EDITION 1988

03/16/05—WDS Catalina Marble Mine. Trip to Catalina Marble Mine with Doug Woolsey of Henderson Materials Company. Visited the mine in the AM. A 5-mile unpaved road lead from Oracle Road west to the site. The road had numerous ruts and gullies due to recent rains. A wash approximately 200 feet wide was crossed on the way to the mine. This wash would be impassible during heavy runoff events. No activity or personnel on site. Reportedly, the mine has not operated for over 8 years. Numerous pieces of mine/construction equipment were observed on site. The equipment had not been operated for at least several months and possible not in several years. A marble sand bagging operation had been setup, but 4 pallets of bags were still wrapped on site and unused. The bags were beginning to deteriorate. A 5-screen stack was connected to a 15 x 28 jaw crusher and roller mill. The 5 screens produced sand, pea gravel (3/8 inch), 3/4 inch, 1 to 2 inch and 3-inch material. A 35-ton Euclid haul truck, Gallion motor grader, Case Excavator, CAT 966C loader, and track-mounted drill with associated air compressor were observed on site. Most of the tires on the equipment were flat or in need of air. All the tracks and blades were covered with ruts. A pedestrian tour of the "pit" showed that the previous operators had apparently high-graded the mine in search of white marble. There were at least 5 working faces and fairly steep material banks. Several of the benches had been mined away and most of the exposed faces had silica or other veins/staining visible. Recent rains had eroded the haul roads and left 2-foot deep gullies.

Recommended a sampling program of the exposed pit surfaces to determine CaCO₃ grade as well as MgO and Silica content.

ABSTRACTED FROM ADMMR ACTIVE MINES DIRECTORY, 1991

Catalina Marble Quarry file
Pinal County

CATALINA MARBLE COMPANY

White Rock Mine T10S R13E Sec. 31

P.O. Box 8997, Catalina, AZ 85725 - Phone 825-9398 - White marble quarried and processed for use as veneer and decorative stone, plaster sand, and animal feed additive.

Owner/Operator Darell
Goode

ABSTRACTED FROM ADMMR ACTIVE MINES DIRECTORY, 1990

CATALINA MARBLE COMPANY

White Rock Mine T10S R13E Sec. 31

P.O. Box 8997, Catalina, AZ 85725 - Phone 825-9398 - White marble quarried and processed for use as veneer and decorative stone, plaster sand, and animal feed additive.

Owner/Operator Darell Goode

ABSTRACTED FROM ADMMR ACTIVE MINES DIRECTORY, 1989

CATALINA MARBLE COMPANY

White Rock Mine T10S R13E Secs. 31 & 32
P.O. Box 8997, Catalina 85725 - Phone 825-9398 - White marble quarried and
processed for use as veneer and decorative stone, plaster sand and animal
feed additive.

Owner/Operator Darell Goode

ABSTRACTED FROM ADMMR ACTIVE MINES DIRECTORY, 1988

CATALINA MARBLE COMPANY

White Rock Mine
32

T10S R13E Secs. 31 &

P.O. Box 8997, Catalina 85725 - Phone 825-9398 - White marble quarried and processed for use as veneer and decorative stone, plaster sand and animal feed additive.

Owner/Operator Darell Goode

Date Printed: 01/14/98

ARIZONA DEPARTMENT OF MINES AND MINERAL RESOURCES

INFORMATION SUMMARY

Information from: Kevin Hill

Company: Catalina Marble Company

Address: 2601 W. Broadway, # 542

City, State ZIP: Tucson, Arizona 85745

Phone: 520-570-0509

MINE: Catalina Marble Quarry

ADMMR Mine File: Catalina Marble Quarry

County: Pinal

AzMILS Number: 754

SUMMARY

Kevin Hall, 2601 W. Broadway, Tucson, Arizona 85745, digital pager 520-570-0509 and FAX 520-620-0662 called and reported that he is operating the Catalina Marble deposit [Pinal AZMILS # 754]. He has been producing construction aggregate from the waste and low grade marble. He has completed a mill and screening plant and is trying to develop customers. He is interested in the livestock feed and the swimming pool plaster sand markets.

He has asked for our help in finding markets and analysis of competitors products.

His current fine crushing machinery is a hammer mill which may be producing too many fines for pool plaster.

Ken A. Phillips, Chief Engineer Date: January 13, 1996

Date Printed: 12/15/95

ARIZONA DEPARTMENT OF MINES AND MINERAL RESOURCES

INFORMATION SUMMARY

Information from: Jim Fink

Company: Hydrogeophysics

Address: 5865 South Old Spanish Trail

City, State ZIP: Tucson, Arizona 85747

Phone: 520-647-3315

MINE: Catalina Marble AKA White Rock Marble

ADMMR Mine File: Catalina Marble Quarry

County: Pinal

AzMILS Number: 754

SUMMARY

Jim Fink of Hydrogeophysics, 5865 South Old Spanish Trail, Tucson, Arizona 85747, Phone (520) 647-3315, FAX (520) 647-3428 reported he is in the process of acquiring the State Lease on the White Rock Marble Quarry previously operated by Darrell Goode of Catalina Marble Company. The lease has been held by Mountain Gravel and Construction of Delores, Colorado for a number of years and operated by Mr. Goode as a d.b.a. Catalina Marble Company.

Jim Fink and a partner are planning to clean up the quarry site, refurbish the equipment, and enter the crushed marble business. He realizes his lack of knowledge in industrial minerals is a problem he will have to overcome. His past experience is in porphyry copper exploration.

Ken A. Phillips, Chief Engineer

Date: December 13, 1995

ARIZONA DEPARTMENT OF MINES AND MINERAL RESOURCES

VERBAL INFORMATION SUMMARY

Information from: Darell Goode, Operator

Company: Catalina Marble, inc.

Address: P.O. Box 8643

City, State ZIP: Catalina, Arizona 85738

Phone: 602-797-8858

MINE: White Rock Mine

ADMMR Mine File: Catalina Marble Quarry

County: Pinal

AzMILS Number: 754

SUMMARY

Darell Goode reported that Catalina Marble never really went out of business, even though the phone had been disconnected. Catalina Marble, Inc. is now a subsidiary Mountain Gravel and Construction. In addition to producing crushed and screened marble for decorative, feed, and plaster uses they are now producing subgrade aggregate for highway projects.

They are reported to have 80,000 tons of crushed material stockpiled at the quarry.

Ken A. Phillips, Chief Engineer Date: December 14, 1992

SAN FRANCISCO MARBLE QUARRY & CRUSHING PLANT

PINAL COUNTY

MG WR 1/30/81: Talked to Mr. Darell Goode, Mine Manager, Catalina Marble Inc., 16302 N. Oracle Road, Catalina, Arizona 85738, phone 825-9398. He is part owner of the mine and he does not want to be listed in the Directory of Active Mines. The mine is on the east side of the Tortolita Mountains. It may be the same as the San Francisco Marble Mine said to be located in Sec. 36, T10S, R13E, Pinal County. The marble is used as a calcium feed additive and as a roofing and plastering material. Production is about 15,000 TPY.

MG WR 1/7/83: The Catalina Marble property in Pima County was closed (probably temporarily) by a locked gate on January 6, 1983.

MG WR 10/14/83: Please merge the Catalina Marble file into the San Francisco Marble Quarry file. They are the same; i.e. the San Francisco marble mine is operated by the Catalina Marble Co. The mine and plant is in Sec. 32, T10S, R13E, not Sec. 33. Pinal Co.

DEPARTMENT OF MINERAL RESOURCES

STATE OF ARIZONA

FIELD ENGINEERS REPORT

Mine ^o San Francisco Marble Quarry

Date Dec. 18, 1961

District Pinal County

Engineer Axel L. Johnson

Subject: Field Engineers Report. Information from Baldo Hernandez & Harold J. Trowbridge.

References: Report of Dec. 1, 1960

Present Status: Closed down.

Review of Recent Operations: Mr. Hernandez reports that the marble quarry suspended operations about Oct. 1st 1961. This became necessary when the Crystal White Rock Co., who had previously purchased the marble produced from the quarry, decided to stop further purchases and close down their plant. Mr. Hernandez, who owns the crushing and screening equipment at the Crystal White Rock Co. plant, reports that he is now negotiating for a lease of the plant to another party.

DEPARTMENT OF MINERAL RESOURCES

STATE OF ARIZONA

FIELD ENGINEERS REPORT

Mine ` San Francisco Marble Quarry

Date Dec. 1, 1960

District Pinal County

Engineer Axel L. Johnson

Subject: Field Engineers Report. Information from Thomas Williams, Crystal White Rock Co.

References Report of San Francisco Marble Quarry & Crushing Plant- July 15 & 29, 1959.

Location Quarry located just N. of the Pima-Pinal Co. line, & about 6 miles west of Highway # 80.

Number of Claims 2 claims on State lands (Type 'b'), covered by State lease.

Owner ` Stat@ of Arizona.

Lessees Baldo Hernandez, 4447 E. Speedway Blvd., Tucson, Ariz.

Principal Minerals White marble.

Principal Activity Quarrying of marble and placing it in the ore bin.
Marble sold f. o. b. mine to Crystal White Rock Co., 1140 N. Anita, Tuc
1 man working.

Review of Recent Changes The crushing and screening plant, which was formerly operated by Baldo Hernandez, and which was located along Highway # 80, just north of the Pinal-Pima county line, was closed down and dismantled last winter.

The crushing and screening equipment was moved to the Crystal White Rock Co. plant site at 1140 N. Anita Ave., Tucson, and leased to the operators of that company on a tonnage basis.

Since moving the plant to this new location, the marble produced at the quarry has been sold f. o. b. quarry to the Crystal White Rock Co.

DEPARTMENT OF MINERAL RESOURCES

STATE OF ARIZONA

FIELD ENGINEERS REPORT

Mine San Francisco Marble Quarry & Crushing Plant
District Pinal County
Date Sept. 16, 1959 & Sept. 30, 1959
Engineer Axel L. Johnson
Subject: Field Engineers Report. Information from Baldo Hernandez & Personal Visit.

References: Report of July 15, 1959 & July 29, 1959

Present Activity: Working on mill alterations and changes in the milling equipment.
At present, no production. 2 men working.

DEPARTMENT OF MINERAL RESOURCES

STATE OF ARIZONA
FIELD ENGINEERS REPORT

Mine San Francisco Marble Quarry & Crushing Plant Date July 15, 1959 & July 29, 1959

District Pinal County

Engineer Axel L. Johnson

Subject: Field Engineers Report. Information from Baldo Hernandez & Personal Visit.

Location The quarry is located just north of the Pima-Pinal County line, and 6 miles west of Highway # 80. The crushing and screening plant is located just north of the Pima-Pinal County line on the east side of Highway # 80, about 18.5 miles N. of Tucson.

Number of Claims 2 claims on State land, covered by State lease (size 600' x 1500')
Applications are pending for the lease of 5 additional claims on State land.

Owner State of Arizona.

Lessees Baldo Hernandez, 4147 E. Speedway Blvd., Tucson, Ariz., et. al.
Above parties recently bought out the interests in the claims and the crushing and screening plant from the former lessee, Joe F. Ramirez.

Principal Product White marble.

Present Activity Quarrying the marble and crushing and screening it at the plant.
2 men working. Production small to local users.

Present Mining Operations The marble is blasted, loaded on trucks with a car loader, and hauled about 6 miles to the plant.

Plant Operations Plant may be considered as a pilot plant, with a larger plant to be constructed later, if the market for the product warrants this expenditure. Plant consists of an ore bin, jaw crusher, conveyor belt, rolls, bucket elevator, and screens. The product is screened into 3 sizes ---- a large size-- 1/4 in. to 3/8 in.; a medium size -- 1/8 in. to 1/4 in.; and a small size --- 1/16 in. to 1/8 in.

Markets & Uses At present, the marble product is sold locally in Tucson and surrounding areas for use as roofing chips and roof coverings. Operators expect to sell marble to users in Phoenix in the near future.

Plans Operators plan to construct a larger crushing and screening plant, if the market requires it.

Remarks Operators are waiting for a court decision to determine the royalty which they will have to pay to the State of Arizona. The question to be determined in this court decision is whether they will pay the State a 5 % net royalty, or whether the royalty will be established at 5 cents per yard.

DEPARTMENT OF MINERAL RESOURCES

STATE OF ARIZONA

FIELD ENGINEERS REPORT

Mine SAN FRANCISCO MARBLE QUARRY & CRUSHING PLANT Date Sept. 11, 1958

District Pinal County

Engineer Axel L. Johnson

Subject: Field Engineers Report. Information from Arthur W. Jacobs & Visit to Plant.

Location: Quarry located just north of the Pima-Pinal County line -- 6 miles west of Highway No. 80. Crushing plant located just north of the Pima-Pinal County line on east side of Highway No. 80, $18\frac{1}{2}$ miles north of Tucson.

Number of Claims: 2 claims covered by State lease, with applications pending for leasing 5 additional claims on State land.

Owner: State of Arizona

Lessee: Joe F. Ramirez, Old Pueblo Roofing Co., 20 W. Saguardo, Tucson, Ariz.
& Operator

Principal Product: White marble

Present Activity: Quarrying the marble and crushing and screening same at the plant. 2 men working part time. Production small and intermittent.

Present Mining Operations: Marble blasted, loaded on trucks with a car loader, and hauled 6 miles to the plant. Operator expects to contract for this work in the future.

Plant Operations: Plant may be considered as a pilot plant, with a larger plant to be erected later, if market for the product warrants.

Plant consists of ore chute, jaw crusher, conveyor belt, rolls, bucket elevator, and a screening plant, which screens the product to 3 sizes -- a large size from $1/4$ " to $3/8$ ", a medium size from $1/8$ " to $1/4$ ", and a small size from $1/16$ " to $1/8$ ".

Markets and Uses: Mr. Ramirez, who owns and operates the Old Pueblo Roofing Co. at Tucson, is producing the marble to supply his customers with roofing chips and roof coverings. The plant will be operated with his own working force, intermittently, as the market requires.

ARIZONA DEPARTMENT OF MINES AND MINERAL RESOURCES

VERBAL INFORMATION SUMMARY

Engineer: Ken Phillips

Date: June 29, 1989

Information from: Darrell Goode

Address: P O Box 8997, Catalina, AZ 85725

Phone: 825-9398

Mine: Catalina Marble Quarry

County: Pinal

Summary of information received:

Mr. Goode holds the State lease and operates this quarry in the south half of NE, Sec 32, T10S R13E. He is producing white sand, gravel and rock for swimming pool construction and other architectural and landscape uses. He provided some information to help sort out the confusion between some of the marble occurrences he controls in the Tortolita Mountains.

This quarry is the only one he is currently operating and is a State lease on State Trust Lands.

He has had some sample ground in a test lot and finds them suitable for filler uses.