



## **CONTACT INFORMATION**

Mining Records Curator  
Arizona Geological Survey  
1520 West Adams St.  
Phoenix, AZ 85007  
602-771-1601  
<http://www.azgs.az.gov>  
[inquiries@azgs.az.gov](mailto:inquiries@azgs.az.gov)

The following file is part of the

Arizona Department of Mines and Mineral Resources Mining Collection

## **ACCESS STATEMENT**

These digitized collections are accessible for purposes of education and research. We have indicated what we know about copyright and rights of privacy, publicity, or trademark. Due to the nature of archival collections, we are not always able to identify this information. We are eager to hear from any rights owners, so that we may obtain accurate information. Upon request, we will remove material from public view while we address a rights issue.

## **CONSTRAINTS STATEMENT**

The Arizona Geological Survey does not claim to control all rights for all materials in its collection. These rights include, but are not limited to: copyright, privacy rights, and cultural protection rights. The User hereby assumes all responsibility for obtaining any rights to use the material in excess of "fair use."

The Survey makes no intellectual property claims to the products created by individual authors in the manuscript collections, except when the author deeded those rights to the Survey or when those authors were employed by the State of Arizona and created intellectual products as a function of their official duties. The Survey does maintain property rights to the physical and digital representations of the works.

## **QUALITY STATEMENT**

The Arizona Geological Survey is not responsible for the accuracy of the records, information, or opinions that may be contained in the files. The Survey collects, catalogs, and archives data on mineral properties regardless of its views of the veracity or accuracy of those data.

PRINTED: 12/17/2002

ARIZONA DEPARTMENT OF MINES AND MINERAL RESOURCES AZMILS DATA

PRIMARY NAME: CASEY COPPER

ALTERNATE NAMES:

COCHISE COUNTY MILS NUMBER: 828

LOCATION: TOWNSHIP 14 S RANGE 26 E SECTION 13 QUARTER NW  
LATITUDE: N 32DEG 13MIN 10SEC LONGITUDE: W 109DEG 38MIN 55SEC  
TOPO MAP NAME: SIMMONS PEAK - 7.5 MIN

CURRENT STATUS: RAW PROSPECT

COMMODITY:

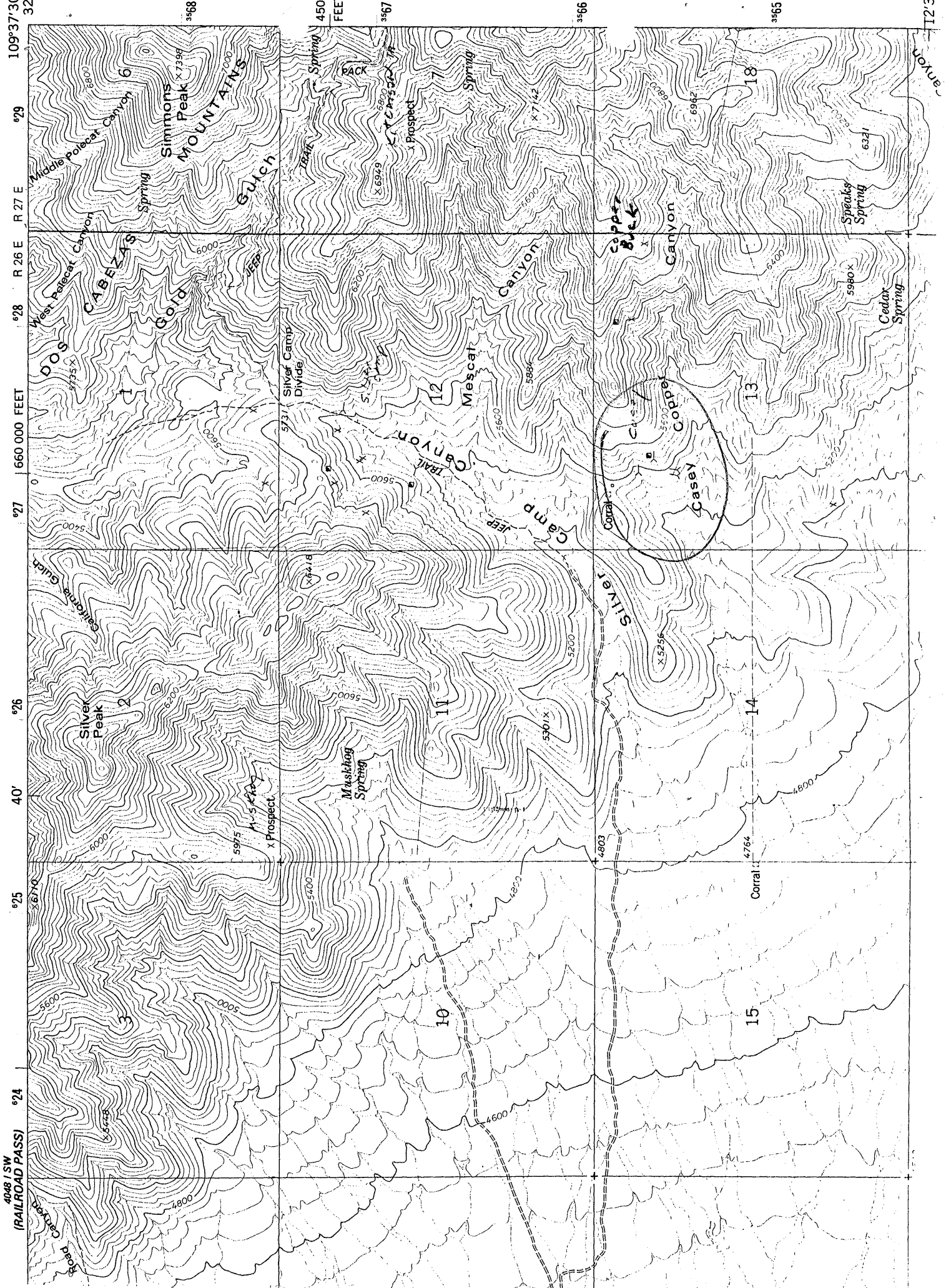
GOLD  
COPPER

BIBLIOGRAPHY:

ADMMR CASEY COPPER FILE (NO DATA IN FILE)  
USGS MAP I 1569, 1986 (NO SPECIFIC DATA ON  
MAP)

7.5 MINUTE SERIES (TOPOGRAPHIC)

NW/4 DOS CABEZAS 15' QUADRANGLE



4048 / SW (RAILROAD PASS)

°24

40'

°25

°26

°27

°28

°29

°32'1

°24

°25

°26

°27

°28

°29

°32'1

°32'3

123