



CONTACT INFORMATION

Mining Records Curator
Arizona Geological Survey
1520 West Adams St.
Phoenix, AZ 85007
602-771-1601
<http://www.azgs.az.gov>
inquiries@azgs.az.gov

The following file is part of the

Arizona Department of Mines and Mineral Resources Mining Collection

ACCESS STATEMENT

These digitized collections are accessible for purposes of education and research. We have indicated what we know about copyright and rights of privacy, publicity, or trademark. Due to the nature of archival collections, we are not always able to identify this information. We are eager to hear from any rights owners, so that we may obtain accurate information. Upon request, we will remove material from public view while we address a rights issue.

CONSTRAINTS STATEMENT

The Arizona Geological Survey does not claim to control all rights for all materials in its collection. These rights include, but are not limited to: copyright, privacy rights, and cultural protection rights. The User hereby assumes all responsibility for obtaining any rights to use the material in excess of "fair use."

The Survey makes no intellectual property claims to the products created by individual authors in the manuscript collections, except when the author deeded those rights to the Survey or when those authors were employed by the State of Arizona and created intellectual products as a function of their official duties. The Survey does maintain property rights to the physical and digital representations of the works.

QUALITY STATEMENT

The Arizona Geological Survey is not responsible for the accuracy of the records, information, or opinions that may be contained in the files. The Survey collects, catalogs, and archives data on mineral properties regardless of its views of the veracity or accuracy of those data.

PRINTED: 07-25-2012

ARIZONA DEPARTMENT OF MINES AND MINERAL RESOURCES AZMILS DATA

PRIMARY NAME: CASA GRANDE MTS. 8

ALTERNATE NAMES:

PINAL COUNTY MILS NUMBER: 467

LOCATION: TOWNSHIP 7 S RANGE 6 E SECTION 22 QUARTER NW
LATITUDE: N 32DEG 48MIN 23SEC LONGITUDE: W 111DEG 42MIN 53SEC
TOPO MAP NAME: CASA GRANDE MTS - 7.5 MIN

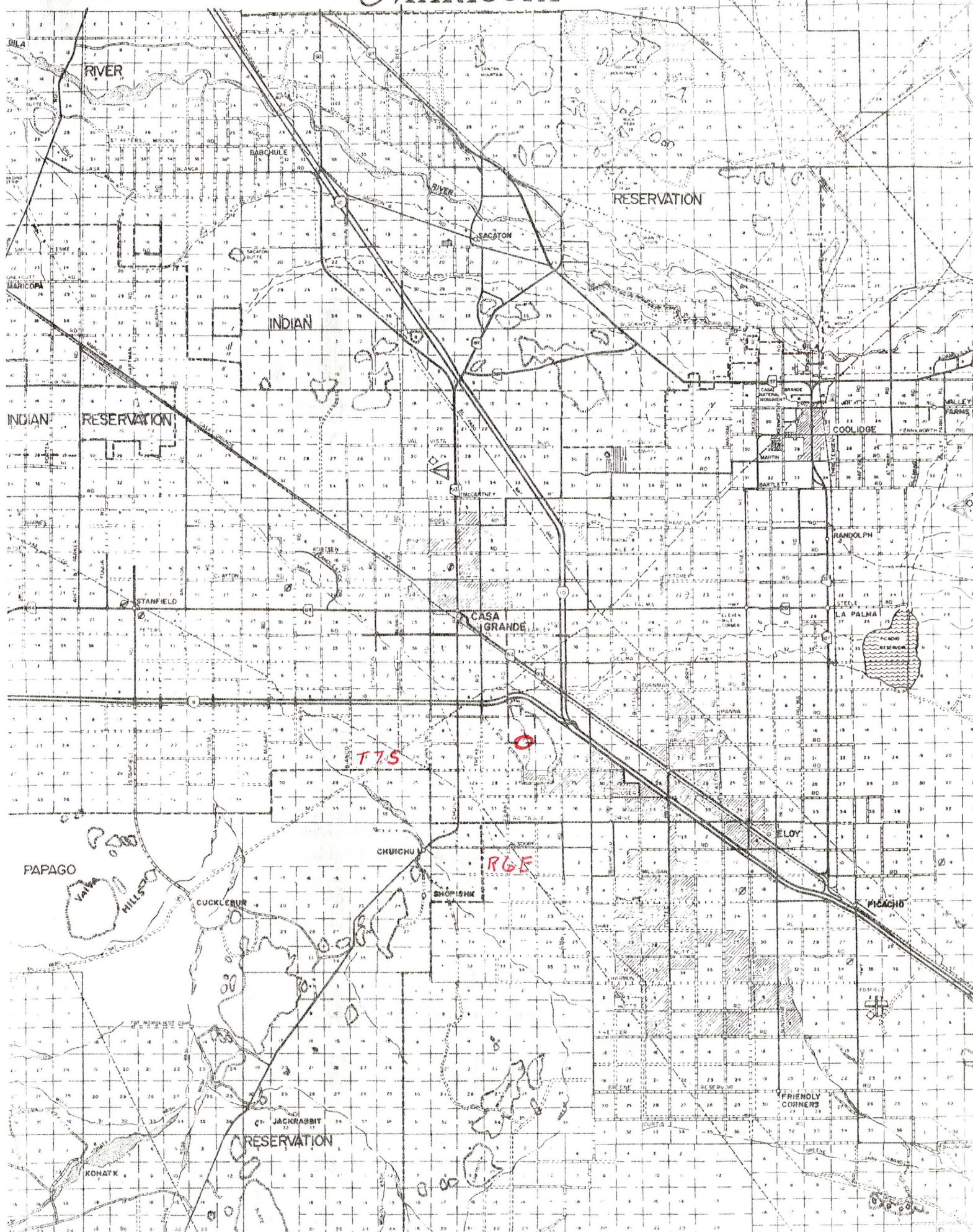
CURRENT STATUS: EXP PROSPECT

COMMODITY:
COPPER

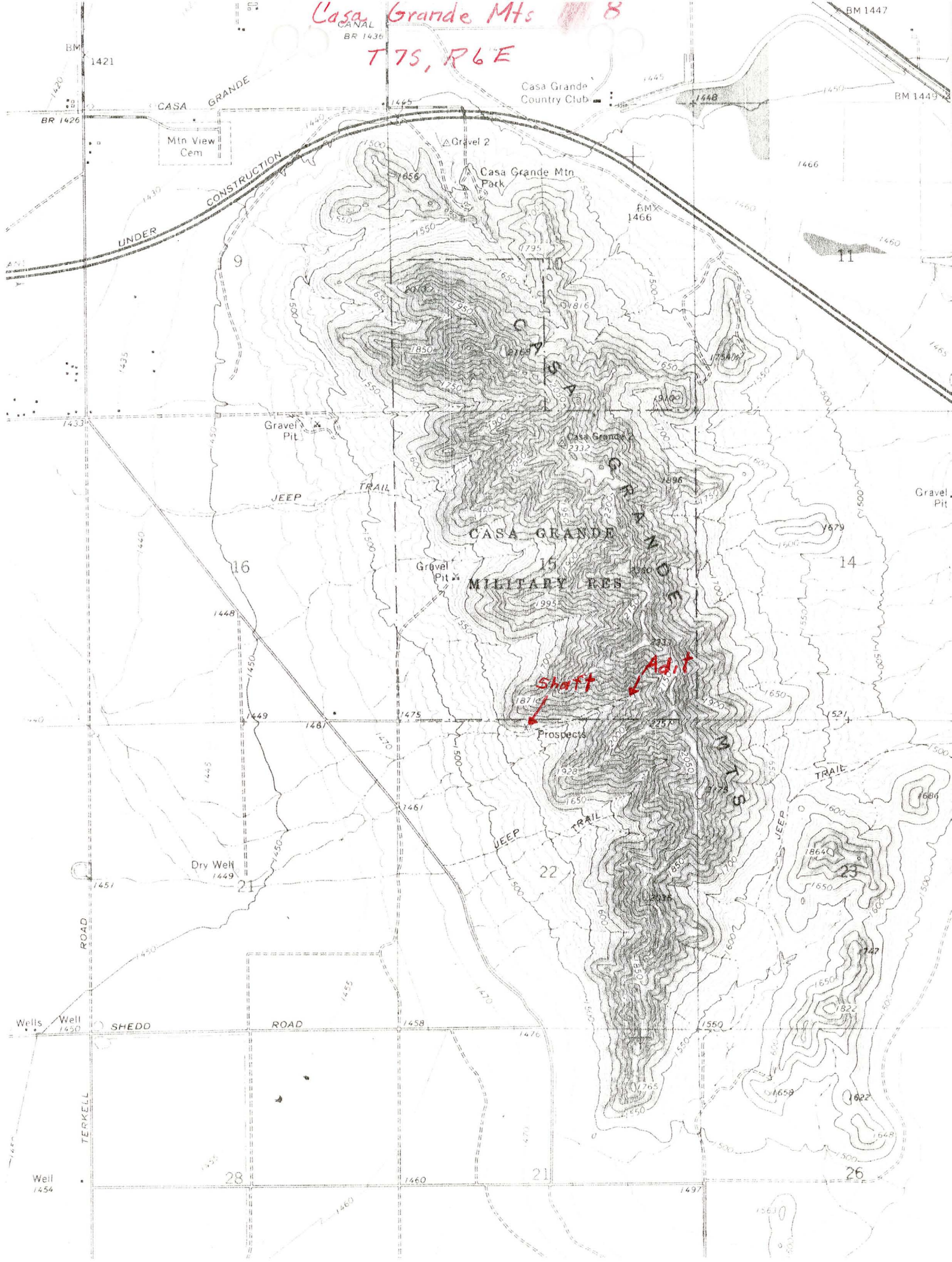
BIBLIOGRAPHY:
USGS CASA GRANDE MTS QUAD
ADMMR CASA GRANDE MTS. 8 FILE

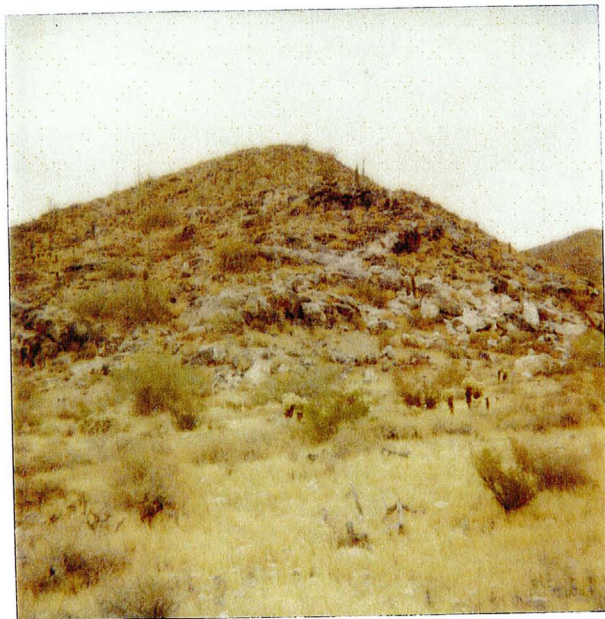
C-90 Grande Mts. Vol 8

MARICOPA



Casa Grande Mts 8
T7S, R6E





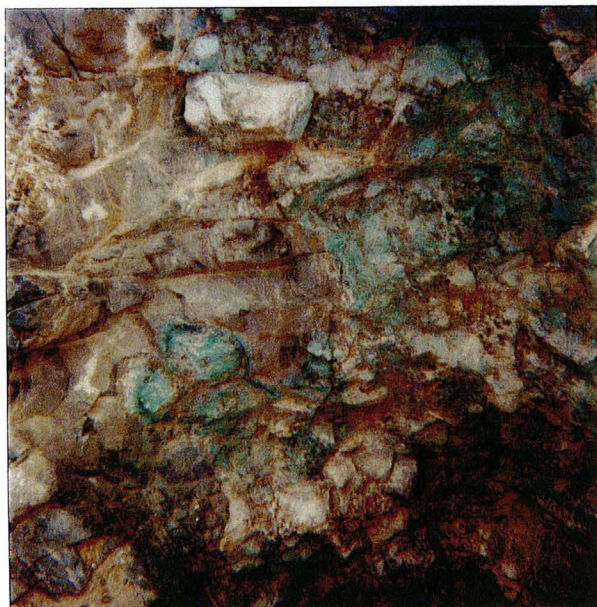
7/2/83 Casa Grande Mts E
Shaft around toe of hill to right
Adit 1/2 mile on up canyon

Shaft around toe of hill to right.
Adit 1/2 mile on up canyon.



7/2/83 Casa Grande Mts E

Shaft remains.



7/2/83 Casa Grande Mts E

DEPARTMENT OF MINERAL RESOURCES

STATE OF ARIZONA

FIELD ENGINEERS REPORT

Mine Casa Grande Mts. 8

Date July 8, 1983

District Silver Reef, Pinal County

Engineer Richard R. Beard

Subject: Mine visit

Location: West slope of Casa Grande Mountains

Shaft: NW $\frac{1}{4}$ Section 22, T7S R6E, Federal Minerals, surface owned by City of Casa Grande.

Adit: SE $\frac{1}{4}$ Section 15, T7S R6E. Casa Grande Military Reservation.

The largest shaft is partially caved and is now about 10' x 10' x 20' deep. It was sunk on the contact between the schist country rock and a granite dike. Copper mineralization (chrysocolla and malachite) occurs in a band about four feet wide on both sides of the contact which is vertical and strikes S75°E. About 100 feet westerly from this shaft another shaft about 4' x 4' x 10' deep was sunk on a 8 inch thick vertical dike of dark volcanic intrusive parallel to the granite dike. No mineralization was discernable.

A third shaft caved full was on the contact to the south east of the large shaft.

The adit was at the end of an old wagon road about $\frac{1}{2}$ mile easterly from the shaft area and about 250 feet higher in elevation. It was run N70°W at least 100 feet into the mountain. The rock types at the portal were schist and a greenish grey volcanic, neither showing any mineralization. An inspection of the dump revealed mostly schist with minor iron staining and very little copper staining and contact recrystallization, a moderate amount of the greenish grey volcanics and a minor amount of gneiss.