



CONTACT INFORMATION

Mining Records Curator
Arizona Geological Survey
1520 West Adams St.
Phoenix, AZ 85007
602-771-1601
<http://www.azgs.az.gov>
inquiries@azgs.az.gov

The following file is part of the

Arizona Department of Mines and Mineral Resources Mining Collection

ACCESS STATEMENT

These digitized collections are accessible for purposes of education and research. We have indicated what we know about copyright and rights of privacy, publicity, or trademark. Due to the nature of archival collections, we are not always able to identify this information. We are eager to hear from any rights owners, so that we may obtain accurate information. Upon request, we will remove material from public view while we address a rights issue.

CONSTRAINTS STATEMENT

The Arizona Geological Survey does not claim to control all rights for all materials in its collection. These rights include, but are not limited to: copyright, privacy rights, and cultural protection rights. The User hereby assumes all responsibility for obtaining any rights to use the material in excess of "fair use."

The Survey makes no intellectual property claims to the products created by individual authors in the manuscript collections, except when the author deeded those rights to the Survey or when those authors were employed by the State of Arizona and created intellectual products as a function of their official duties. The Survey does maintain property rights to the physical and digital representations of the works.

QUALITY STATEMENT

The Arizona Geological Survey is not responsible for the accuracy of the records, information, or opinions that may be contained in the files. The Survey collects, catalogs, and archives data on mineral properties regardless of its views of the veracity or accuracy of those data.

PRINTED: 12/17/2002

ARIZONA DEPARTMENT OF MINES AND MINERAL RESOURCES AZMILS DATA

PRIMARY NAME: CARLSBAD #2

ALTERNATE NAMES:
VYNE-COINS CLAIMS

MARICOPA COUNTY MILS NUMBER: 236A

LOCATION: TOWNSHIP 6 N RANGE 5 W SECTION 4 QUARTER SW
LATITUDE: N 33DEG 53MIN 30SEC LONGITUDE: W 112DEG 47MIN 56SEC
TOPO MAP NAME: VULTURE MOUNTAINS - 15 MIN

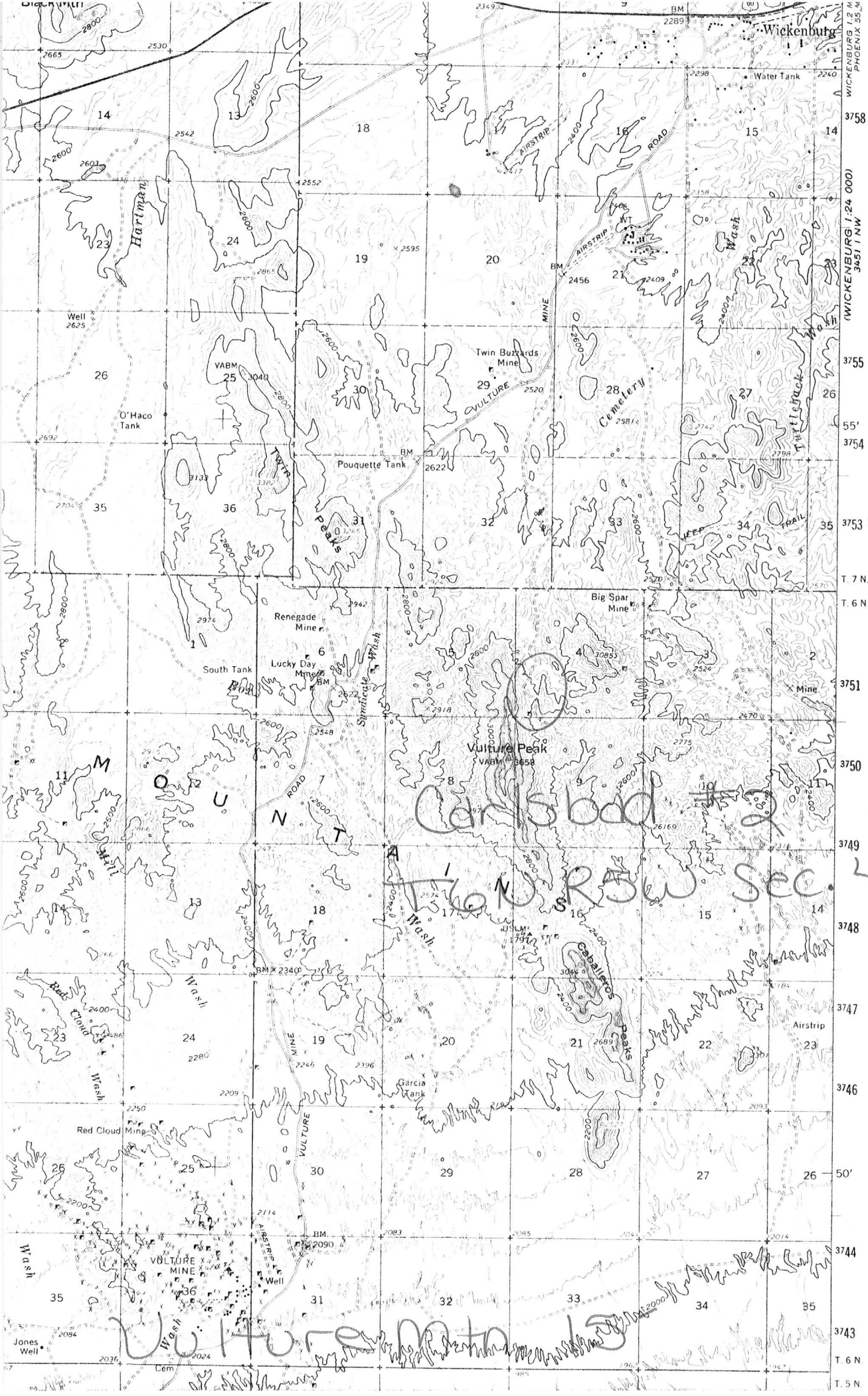
CURRENT STATUS: EXP PROSPECT

COMMODITY:

LEAD
SILVER
COPPER SULFIDE
FLUORINE
MOLYBDENUM
VANADIUM
GOLD LODE
LEAD CARBONATE

BIBLIOGRAPHY:

USGS VULTURE MTNS QUAD
ADMMR CARLSBAD #2 MINE FILE
LOCATION INCLUDES NW BORDER OF SEC 9-T6N-R5W



DEPARTMENT OF MINERAL RESOURCES
STATE OF ARIZONA
FIELD ENGINEERS REPORT

Mine Carlsbad No. 2

Date October 4, 1960

District Vulture Dist., Maricopa Co.

Engineer Lewis A. Smith

Subject: Interview with Ed Coin

Location: E. slope Vulture Peak (Vulture Mtn.) *sec 9, T6N, R5W Re: K.R.*

Number of Claims: 1 unpatented

Owners: Ed Coins and Robert R. Vine. No present address except Wickenburg, General Delivery. Will let us know later.

Minerals: Lead-silver-copper

Work: 30 foot shaft with headframe, LeRoy hoist, 800 pound bucket.

Geology: Reopened quartz veinⁱⁿ granitic rocks and overlying schist. The vein filling consists of brecciated quartz cemented by gouge. It strikes NE-SW and is nearly vertical and has two well defined walls. It is cut by a transverse fault 200' NE of the 30' shaft, but its age with respect to the vein is not yet determined. The minerals are wulfenite, vanadinite, cerargyrite(?), cerussite and galena with scattered and sparse pods or pockets of chrysocolla and chalcopyrite. The vein ran 11 ounces in silver and 6% lead near the surface in the shaft.

DEPARTMENT OF MINERAL RESOURCES

STATE OF ARIZONA

FIELD ENGINEERS REPORT

Mine VYNE - GOINS CLAIMS

Date Oct. 2, 1961

District VULTURE, MARICOPA COUNTY

Engineer L. A. Smith

Subject: Interview with Robert Vyne, 9-29-61

Property: 2 claims (unpatented)

Location: -

Owners: Robert Vyne, 5444 N. 13th Drive, Phoenix (AM5-5183)

History: This is an old property and was worked early in the 1900's.

Minerals: Lead, silver and copper, with Fluorite gangue.

Work: A 20' shaft at the end of a short cut.

Geology: The deposit lies along a granite-schist contact which Vyne said looked like it might be a fault. The contact is crossed by a few transverse fractures. One, which may be post-mineral, cut the ore off on a flat plane about half way down the shaft. The ore overlies this flat slip. The minerals are galena, argentite (?) anglesite and cerussite with some vanadinite and wulfenite. Copper stains occur with the 6" quartz portion of the vein. A little chalcopyrite was found but the copper was largely in chrysocolla. The 6" quartz band is incased in what appears to be epidote which is stained by copper silicate. The lead minerals occur in veinlets, bunches, and pods in the schist. A general sample (4 feet long) across the vein ran 2½ percent copper, 10 percent lead, and 11 ounces silver, and a small amount of gold.

A mine visit is desired and this probably can be arranged in October.

Carlsbad #2 Mine (aka Vyne - Coins Claims)
Sec. 9, T. 6N., R. 5W.
Maricopa County

reference: Arizona Dept. of Mineral Resources
Carlsbad No. 2 Mine (File)

present owner: Robert Vyne of Phoenix (1961 info.)

minerals: lead, silver, copper, fluorite,
wulfenite, vanadinite, cerargyrite, cerussite

history of the area:

This property was worked in the early
1900's. In 1960 the property was
owned by Ed Coins and Robert R. Vyne.
They dug a 30 foot shaft with
headframe, a 20 foot shaft, and were
using a LeRay hoist and 800 pound
bucket. A sample ran 2 1/2 percent Cu,
10% Pb, and 110z. Ag, with a small
amount of gold.

geology of the area:

The deposit lies along a granite-schist
contact. The contact is crossed by several
transverse fractures.

the property consists of 2 unpatented claims