



CONTACT INFORMATION

Mining Records Curator
Arizona Geological Survey
1520 West Adams St.
Phoenix, AZ 85007
602-771-1601
<http://www.azgs.az.gov>
inquiries@azgs.az.gov

The following file is part of the

Arizona Department of Mines and Mineral Resources Mining Collection

ACCESS STATEMENT

These digitized collections are accessible for purposes of education and research. We have indicated what we know about copyright and rights of privacy, publicity, or trademark. Due to the nature of archival collections, we are not always able to identify this information. We are eager to hear from any rights owners, so that we may obtain accurate information. Upon request, we will remove material from public view while we address a rights issue.

CONSTRAINTS STATEMENT

The Arizona Geological Survey does not claim to control all rights for all materials in its collection. These rights include, but are not limited to: copyright, privacy rights, and cultural protection rights. The User hereby assumes all responsibility for obtaining any rights to use the material in excess of "fair use."

The Survey makes no intellectual property claims to the products created by individual authors in the manuscript collections, except when the author deeded those rights to the Survey or when those authors were employed by the State of Arizona and created intellectual products as a function of their official duties. The Survey does maintain property rights to the physical and digital representations of the works.

QUALITY STATEMENT

The Arizona Geological Survey is not responsible for the accuracy of the records, information, or opinions that may be contained in the files. The Survey collects, catalogs, and archives data on mineral properties regardless of its views of the veracity or accuracy of those data.

PRINTED: 12/17/2002

ARIZONA DEPARTMENT OF MINES AND MINERAL RESOURCES AZMILS DATA

PRIMARY NAME: CAPE NOME

ALTERNATE NAMES:
MOUNTAINTOP PATENT

COCHISE COUNTY MILS NUMBER: 865

LOCATION: TOWNSHIP 23 S RANGE 20 E SECTION 20 QUARTER SE
LATITUDE: N 31DEG 24MIN 40SEC LONGITUDE: W 110DEG 19MIN 45SEC
TOPO MAP NAME: MILLER PEAK - 7.5 MIN

CURRENT STATUS: RAW PROSPECT

COMMODITY:
GOLD

BIBLIOGRAPHY:
ADMMR CAPE NOME FILE
WEBER, R.H., 1950 U OF A PHD THESIS P 155

01/12/89

ARIZONA DEPARTMENT OF MINES AND MINERAL RESOURCES FILE DATA

PRIMARY NAME: CAPE NOME

ALTERNATE NAMES:
MOUNTAINTOP PATENT

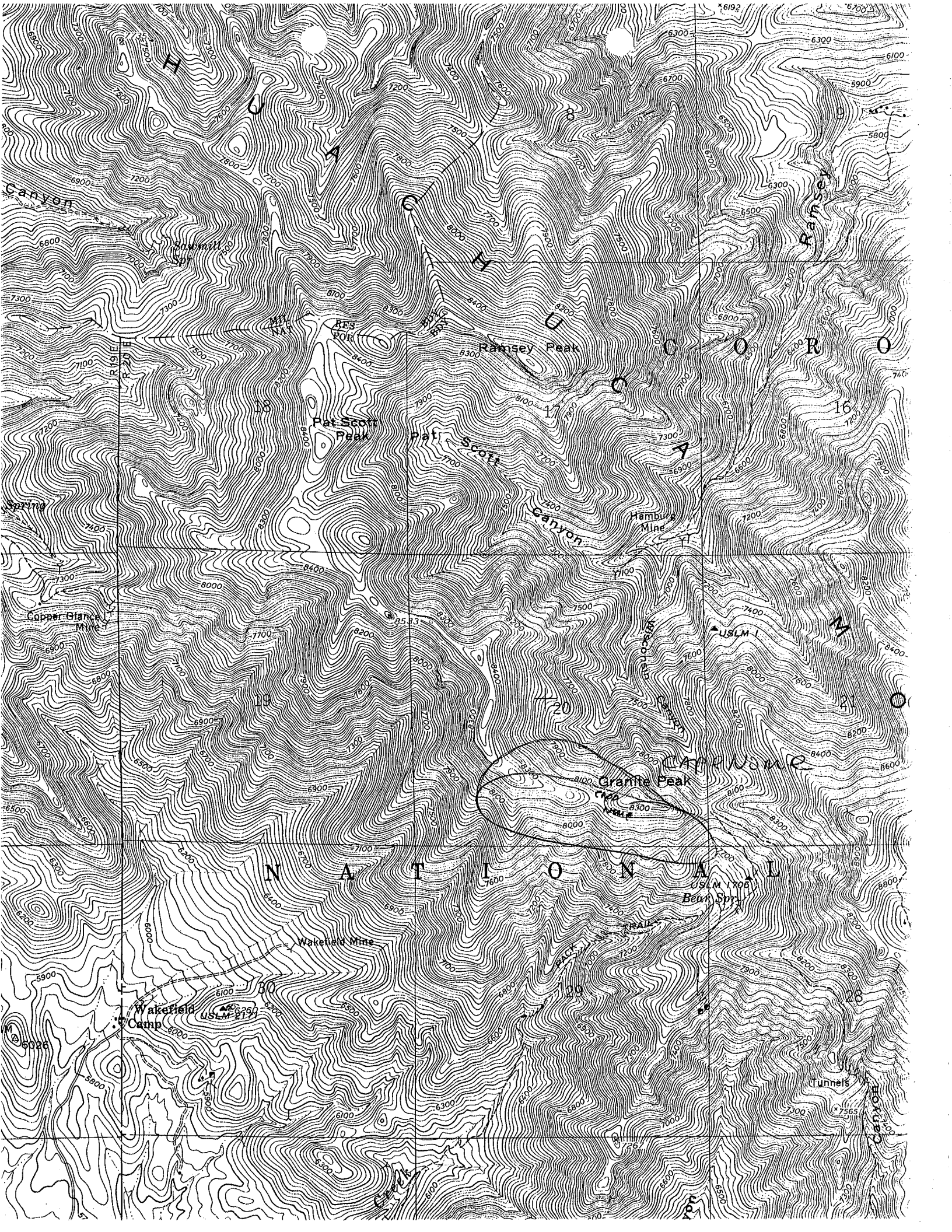
COCHISE COUNTY MILS NUMBER: 865

LOCATION: TOWNSHIP 23 S RANGE 20 E SECTION 20 QUARTER SE
LATITUDE: N 31DEG 24MIN 40SEC LONGITUDE: W 110DEG 19MIN 45SEC
TOPO MAP NAME: MILLER PEAK - 7.5 MIN

CURRENT STATUS: RAW PROSPECT

COMMODITY:
GOLD

BIBLIOGRAPHY:
ADMMR CAPE NOME FILE
WEBER, R.H., 1950 U OF A PHD THESIS P 155



Canyon

RES
BOR

Ramsey Peak

Pat Scott
Peak

Pat Scott
Plat

Hamburg
Mine

Copper Blaney
Mine

Granite Peak

Wakefield Mine

Wakefield
Camp

USLM 102
Bear Spr

Tunnels