



CONTACT INFORMATION

Mining Records Curator
Arizona Geological Survey
1520 West Adams St.
Phoenix, AZ 85007
602-771-1601
<http://www.azgs.az.gov>
inquiries@azgs.az.gov

The following file is part of the

Arizona Department of Mines and Mineral Resources Mining Collection

ACCESS STATEMENT

These digitized collections are accessible for purposes of education and research. We have indicated what we know about copyright and rights of privacy, publicity, or trademark. Due to the nature of archival collections, we are not always able to identify this information. We are eager to hear from any rights owners, so that we may obtain accurate information. Upon request, we will remove material from public view while we address a rights issue.

CONSTRAINTS STATEMENT

The Arizona Geological Survey does not claim to control all rights for all materials in its collection. These rights include, but are not limited to: copyright, privacy rights, and cultural protection rights. The User hereby assumes all responsibility for obtaining any rights to use the material in excess of "fair use."

The Survey makes no intellectual property claims to the products created by individual authors in the manuscript collections, except when the author deeded those rights to the Survey or when those authors were employed by the State of Arizona and created intellectual products as a function of their official duties. The Survey does maintain property rights to the physical and digital representations of the works.

QUALITY STATEMENT

The Arizona Geological Survey is not responsible for the accuracy of the records, information, or opinions that may be contained in the files. The Survey collects, catalogs, and archives data on mineral properties regardless of its views of the veracity or accuracy of those data.

PRINTED: 12/17/2002

ARIZONA DEPARTMENT OF MINES AND MINERAL RESOURCES AZMILS DATA

PRIMARY NAME: CALUMET & CORNELIA

ALTERNATE NAMES:
GOLD REEF

MARICOPA COUNTY MILS NUMBER: 524

LOCATION: TOWNSHIP 5 N RANGE 3 E SECTION 33 QUARTER C
LATITUDE: N 33DEG 44MIN 03SEC LONGITUDE: W 112DEG 03MIN 21SEC
TOPO MAP NAME: UNION HILLS - 7.5 MIN

CURRENT STATUS: DEVEL DEPOSIT

COMMODITY:
COPPER OXIDE
GOLD

BIBLIOGRAPHY:
USGS UNION HILLS QUAD
ADMMR CALUMET & CORNELIA MINE FILE
AZBM BULL 137 P 165
MINES HANDBOOK VOL XIV 1920 P 238

PRIMARY NAME: CALUMET & CORNELIA

ALTERNATE NAMES:

GOLD REEF

MARICOPA COUNTY MILS NUMBER:524

LOCATION: TOWNSHIP 5 N RANGE 3 E SECTION 33 QTR. CENTER
LATITUDE:N 33DEG 44MIN 03SEC LONGITUDE:W 112DEG 03MIN 21SEC
TOPO MAP NAME: UNION HILLS - 7.5 MIN

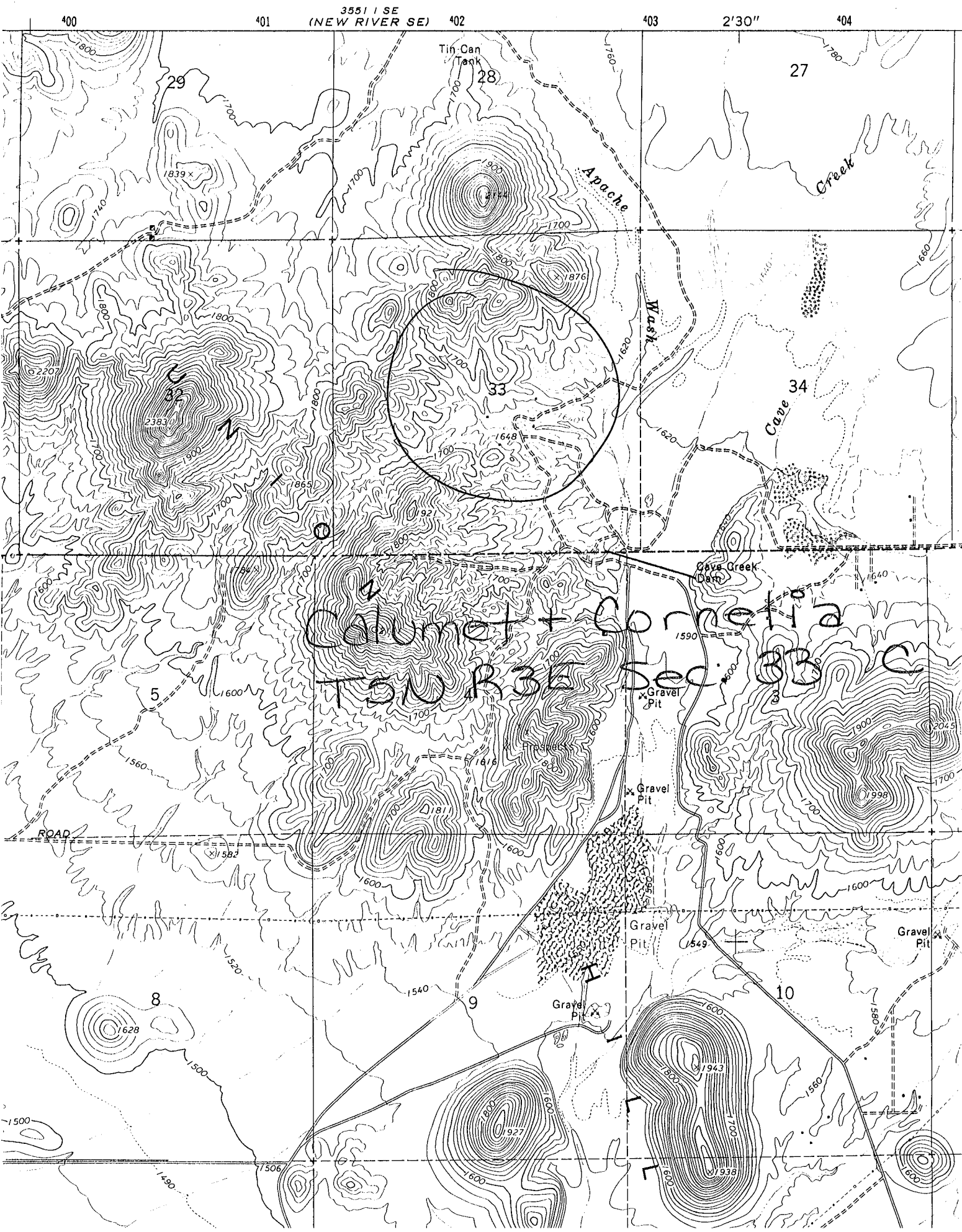
CURRENT STATUS: DEVEL DEPOSIT

COMMODITY:

COPPER-(M) OXIDE-PRIMARY
GOLD-COPRODUCT

BIBLIOGRAPHY:

USGS UNION HILLS QUAD
ADMR CALUMET & CORNELIA MINE FILE
AZBM BULL 137 P 165
MINES HANDBOOK VOL XIV 1920 P 238



Calumet + Connetta
T. & N. R. 35 Sec. 33 C

CALUMET & CORNELIA DEVELOPMENT COMPANY

Mr. Stanley Stauss of Cut Rate Lumber Co., 3036 E. Washington - Ph. 273-1404, was in and stated they now own this property. lm 5-21-69

REPORT ON THE PROPERTY
OF THE
CALUMET & CORNELIA DEVELOPMENT COMPANY

CLAIMS & LOCATION;- The property, consisting of eighteen full claims and one fraction, about 370 acres (see sketch), is located in the Winifred Mining District, Maricopa County, Arizona, and is reached by a good automobile road from Phoenix, about twenty-five miles distant to the north.

GEOLOGICAL;- The general formation of the district is Cambrian or pre-Cambrian schists containing some quartzite bands or lenses, all cut by intrusive dykes. The general trend of the schistosity is nearly north and south.

There has been much erosion over the whole area, the sedimentaries, which at one time, probably overlaid the schists being entirely gone.

A vertical shaft, fifty feet deep, has been sunk on the Helen claim (noted as No. 2 under improvements) and in a crosscut, run to the south a contact vein, about eight feet wide between schist and porphyry, has been cut and drifted upon, about eighty-five feet. This vein is composed of a crushed porphoretic material, carrying considerable calcite and is thoroughly leached and shows evidence of much movement.

DEVELOPMENT;- About one thousand feet of work has been done, consisting of, shallow shafts, tunnels and open cuts. This work has been done, more with the idea of prospecting, than developing the property, with the result, that aside from proving the existence of ore, it could hardly be called development work. However, the purpose for which it was done has been accomplished, as almost every opening has exposed ore.

The following is a description of the different openings:-

NUMBER ONE:- Is a large quartzite cropping, part of it carrying as high as 5% copper and some gold.

NUMBER TWO:- Is a 50 foot shaft, about 25 feet east of No.1. At the bottom, both crosscuts and drifts have been run. In crosscutting to the south a vein of white talcy material was cut. At this point it was about eight or nine feet thick and dipped to the north. Beyond this is porphyry.

NUMBER THREE:- Is a fifty foot shaft, about two hundred feet north-east of No.2. It was sunk on a seam, in which occasional lenses of good ore was found. At the bottom, a 25 foot drift was run on the same seam. No.2 assay was taken from the bottom of this drift.

NUMBER FOUR;- As the surface to the west showed more or less copper, a trench starting about one hundred feet to the west and running towards No.3 was dug. This trench cut stringers or disseminations of ore in the schist running parallel with the one in No.3.

NUMBER FIVE;- Is a prospect hole about three hundred feet to the north of No.4.

NUMBER SIX;- Is a forty foot tunnel on the Gold Reef claim. It is run under a quartzite capping. It shows some copper and in the quartzite some free gold.

NUMBER SEVEN;- Is a small prospect hole showing some copper.

NOTE;- The above mentioned workings and croppings are on what is called the West Group and comprise a mineral zone, which, on the surface, has no connection with the east mineral zone.

The seven points that I have described are the principal ones, although there are many others where some work has been done. All these lay in a basin and the area is about seven hundred feet by twelve hundred feet.

NUMBER EIGHT;- Is an open cut about thirty feet long and about 15 feet deep, in the face of which there is some good copper ore.

NUMBER NINE;- Is a cropping at the discovery point, showing some copper.

NUMBER TEN;- Another discovery point showing some copper in the schist.

NUMBER ELEVEN;- Is an open cut, about forty feet long and about twelve feet deep at the face. Some good ore was taken out of this place and is still on the dump.

NUMBER TWELVE;- A thirty foot shaft on or near the contact. At the bottom there is about thirty feet of drifting. Some good ore is found in stringers here, and it is probably the same as No.11, which is about two hundred feet to the south.

NUMBER THIRTEEN;- Is a cropping about fifteen feet northeast of No.12, showing some very good ore.

NUMBER FOURTEEN;- Is an open cut about fifty feet to the north of No.12, and shows two stringers of good ore.

Number Fifteen;- A fifty foot shaft, started all in ore, but at 20 feet it dipped to the east. At the bottom are indications of its coming in again at the west.

Numbers 16 & 17;- Are two shafts, one six feet deep and the other twenty-five and they are not over five feet apart. both have some good ore.

Number Nineteen;- Cropping about 150 feet in length and about forty feet at its greatest width where copper shows.

Numbers 20 & 21;- Are two shafts, eighteen and twenty feet deep, and about 200 feet west of No.15.

Numbers 22 & 23;- An eight foot shaft and an open cut about thirty feet showing some good ore.

Number 27;- Is only a prospect hole about eight feet deep, but has some copper.

Number 24;- Another prospect hole with stringers of good ore.

Number 28;- A 10 ft. discovery hole, showing some very good ore.

Number 26;- An open cut in the porphyry with some copper.

The foregoing is a description of most of the workings on what is known as the East Group. This mineralized zone, as proven, is about 3000 ft. in length and about 600 feet in width.

ORE OCCURRENCE;- There has not been a sufficient amount of work done to determine how the ore may occur at depth. Especially is this so, as ore is found, both at the contact of the intrusives with the schist, and in the schist itself. In the open cut west of the shaft on the Helen claim, the ore is in the schist, while in the No.2 opening in the drift the mineralization is in porphyry and in the shaft in schist. I believe that the heaviest mineralization will be in the porphyry contacts, with a gradual fading out; into the schist. All ore so far encountered, is carbonate and oxide, but from extreme erosion which has occurred, I do not believe that this condition will persist to a great depth, but that sulphides will be encountered before a depth of 200 feet has been attained. The development on the Slocum Mine, an adjoining property would seem to bear out the above assertion, as the sulphides were found there at 150 feet depth. This prediction might not hold good in the case of deep-seated fault fissures or contacts, where much movement has occurred, as in the case of the contact on the Helen claim.

WATER:- There is a good well of water on the Monarch, the most easterly of the property. Should this not supply a sufficient quantity Cave Creek, about one mile away, could be drawn upon.

WOOD & TIMBER;- The usual desert growths, consisting of mesquite, ironwood, etc., will supply sufficient wood for domestic purposes, All timber and lumber must be brought in from the outside.

CONCLUSION;- The property has a mineral showing over a large area, where superficial work has been done, and only by deeper development can its value be determined. The geological conditions, a schistose formation, cut by intrusive dykes, are favorable for commercial ore bodies, and are similar to those in which some of the largest copper mines in the State are found. The large vein shown in the drift, from

shaft on the Helen claim, is, I consider a very favorable point for development. Although it contains no ore, where opened; it is thoroughly crushed, and shows by abundant slickensides and soft gouge; that a large amount of movement has occurred, which has afforded a channel for circulating waters. This has resulted in a thorough leaching of the ground near the surface and this leaching may extend considerable depth in this material, thus carrying the values to a greater depth. On the East Group, at points noted on the sketch; as Nos. 12 and 13, there is a contact between schist and porphyry. This shows perhaps the best mineralization on the property, both at the contact and extending into the schist. From this point some excellent ore has been mined and is now on the dump. Practically every opening on the property has shown some ore.

As shown, by the present openings, there are two distinct mineralized areas on the property, known as the West Group and the East Group, and this fact should be considered, in any systematized plan for development.

I would recommend that the West Group be developed by sinking the shaft #3, and crosscutting therefrom. The depth to which it should be sunk, to be determined by conditions, as encountered; as the work progresses. Should the contact vein encountered in No. 2 shaft continue to dip at the same angle as there shown this shaft would cut in at an approximate depth of 400 feet.

On the East Group, the shaft at point No. 12 should be sunk deeper, and the ground thoroughly prospected by crosscutting and drifting. I would also advise, that some work be done at points #20 and 21. These openings show some good ore, in a crushed, kaolinized schistose material and they should be further exploited.

Two gasoline hoists should be provided, one to be placed at each shaft, above mentioned.

The work at points No. 20 and 21 could be done by hand for the present.

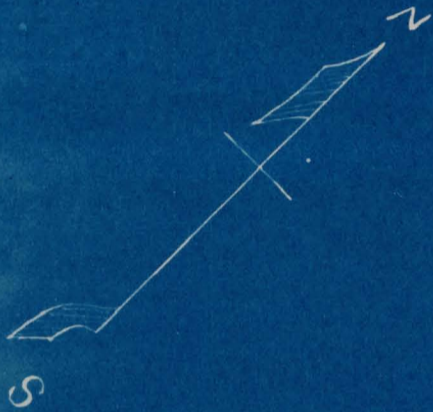
In consideration of the facts herein noted; I can recommend the property, as being worthy of development; to the extent of proving, or disproving the existence of commercial ore bodies. The expense should be moderate; as it is easily accessible by wagon or automobile.

NOTE:- The assays, as noted on appended sheet are not claimed to be the averages of ore bodies; but samples of such ore as can be found at indicated points.

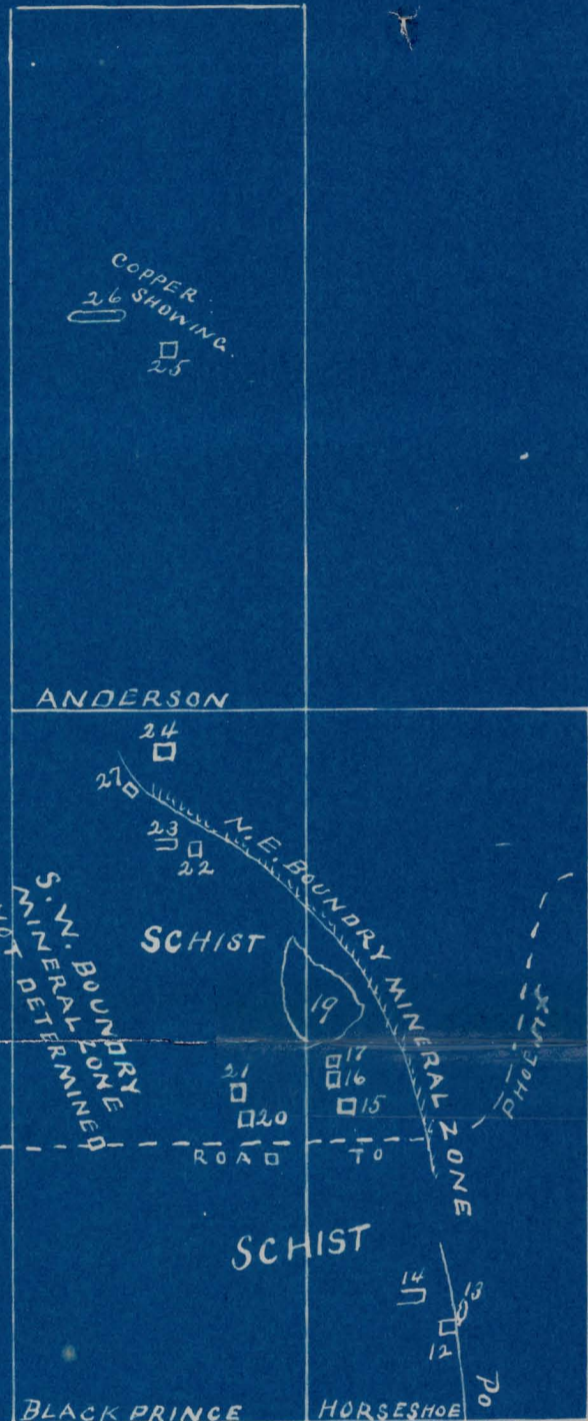
(Signed) ROBERT W. HOLLIS

Phoenix, Arizona;

April 19th. 1917.



SKETCH No 3
EAST MINERAL ZONE
C AND C. D. Co.



COPPER SHOWING
26
25

ANDERSON

SCHIST

S.W. BOUNDARY
MINERAL ZONE
NOT DETERMINED

ROAD TO

SCHIST

BLACK PRINCE

HORSESHOE

POPHYRY. LINE OF CONTACT

SHOWING COPPER
9

SOME COPPER
10

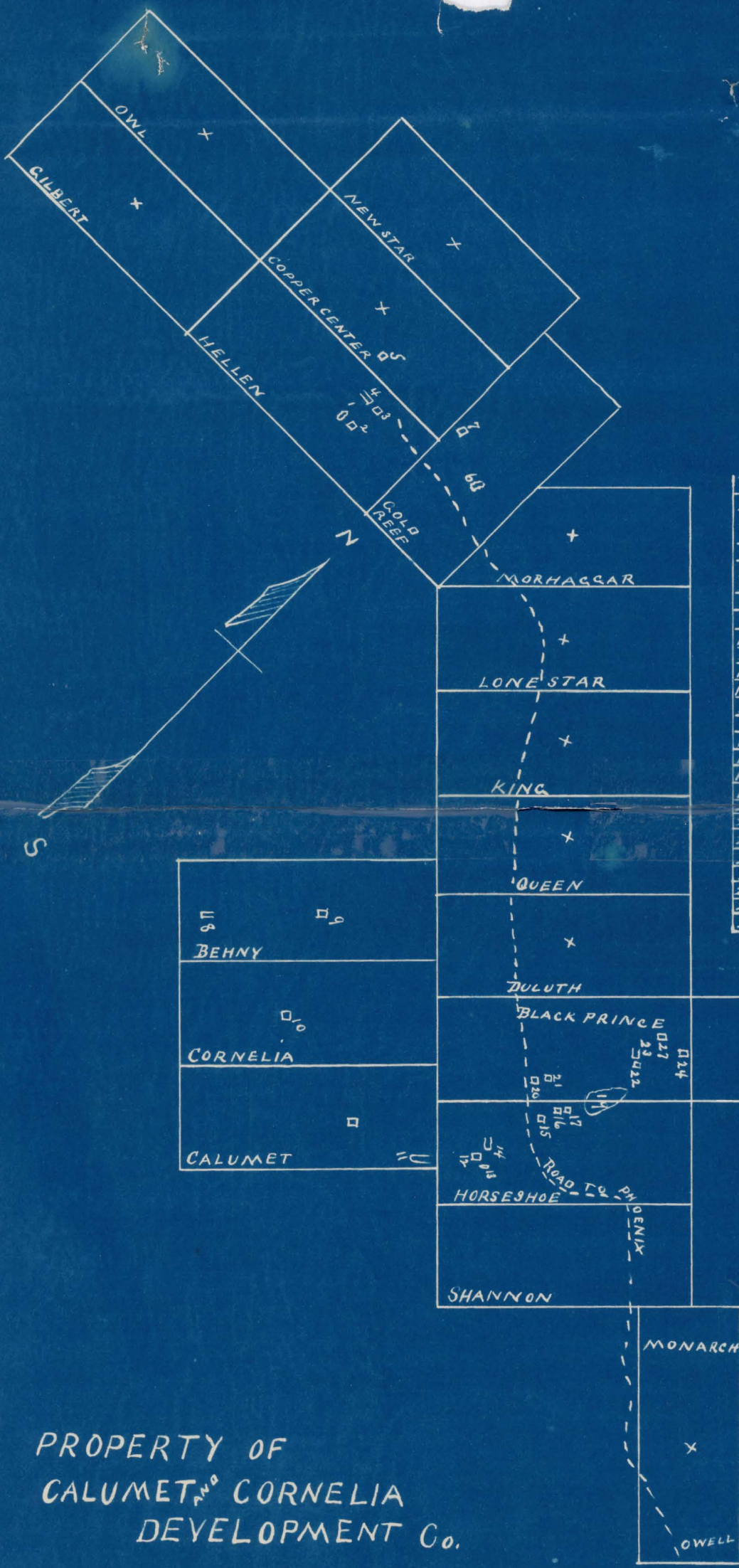
SOME GOOD ORE
8

BEHNY

CORNELIA

CALUMET

0% COPPER AS
PER ASSAY



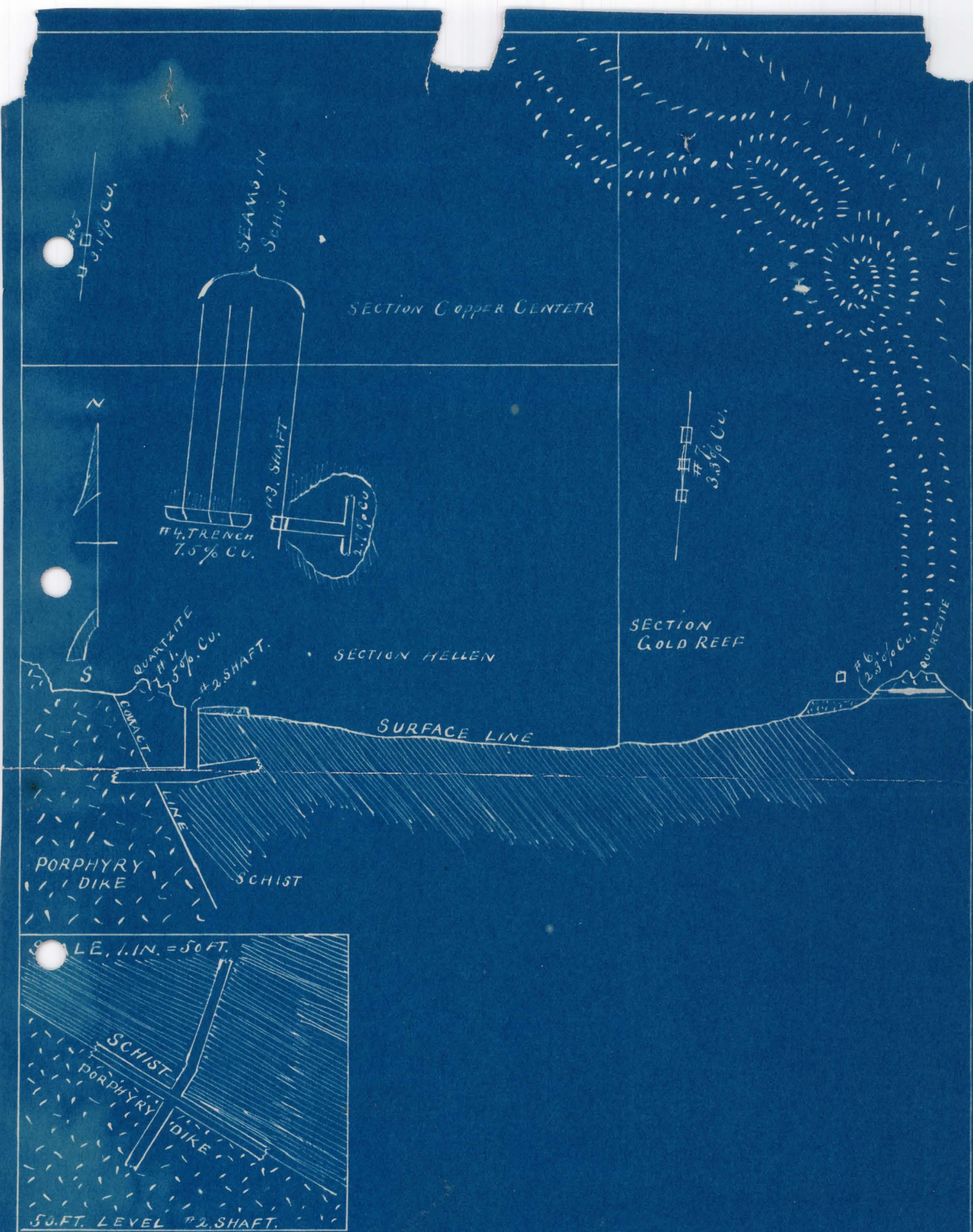
LEGEND		
1	QUARTZITE	5.0
2	SHAFT 50 FT DRIFTS 200 FT	
3	" 50 " " 30 "	2.1
4	TRENCH 50 FT	7.5
5	PROSPECT HOLE	3.1
6	TUNNEL 60 FT.	2.3
7	PROSPECT HOLE	3
8	OPEN CUT 35 FT	
9	SHAFT 10 "	
10	OPEN CUT 20 "	
11	" " 40 "	6.7
12	SHAFT 30 FT DRIFT 40'	8.8
13	CROPPING	13.4
14	TRENCH 20 FT.	8.5
15	SHAFT 50 FT DRIFTS'	7.7
16	" 25 "	9.0
17	" 8 "	9.0
18		
19	CROPPING	5.1
20	SHAFT 20 FT	
21	" " " "	12.4
22	" 10 "	5.5
23	OPEN CUT 20 "	5.5
24	PROSPECT HOLE	6.0
25	" " " "	7.0
26	TRENCH 40 FT	9.2
27	SHAFT 8 "	5.6

PROPERTY OF
CALUMET AND CORNELIA
DEVELOPMENT CO.

SKETCH NO 1.

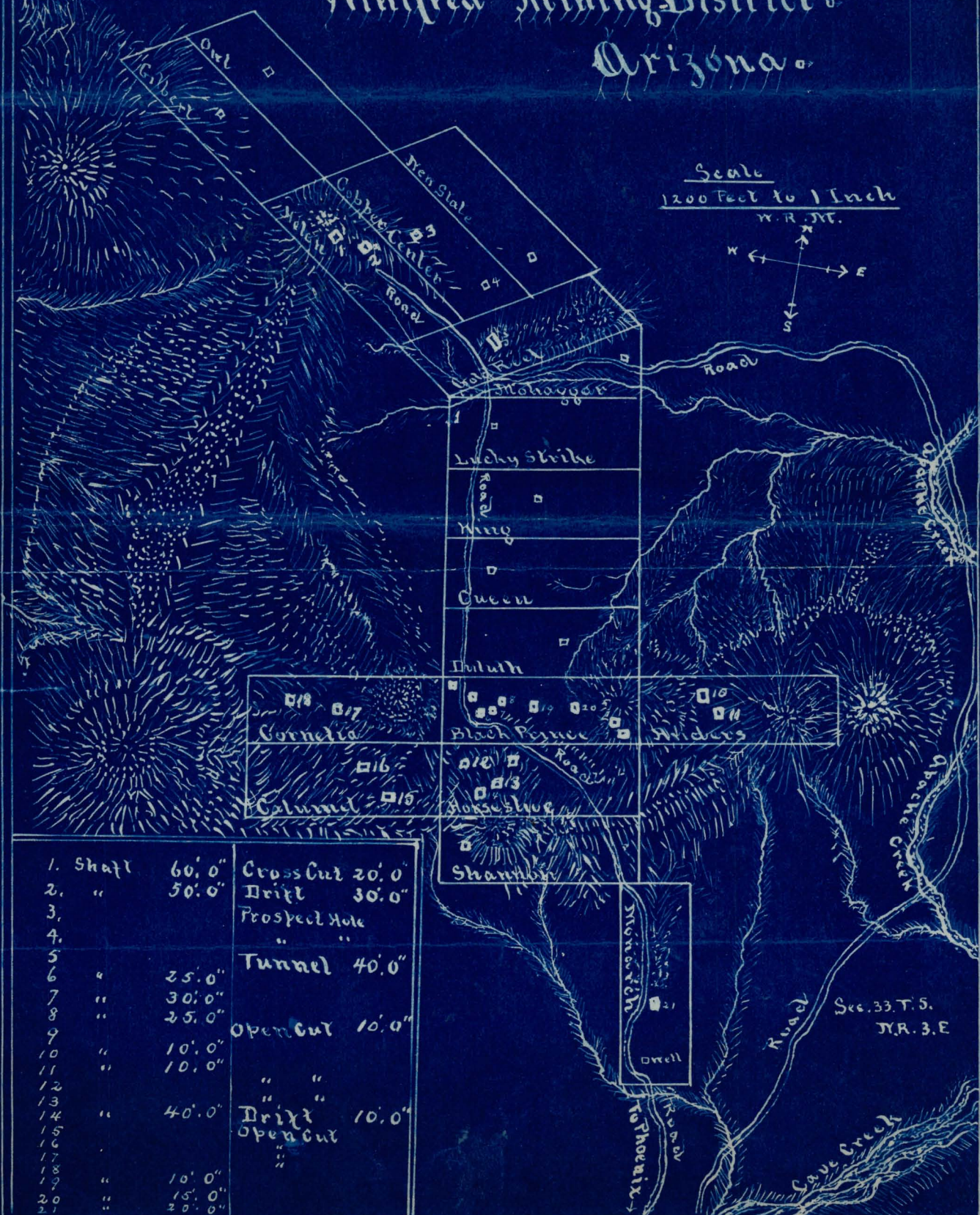
JAN 15 1918

SCALE 1 IN. = 800 FT



SKETCH NO. 2.
 SURFACE AND CROSS SECTION
 WEST MINERAL ZONE
 C AND C. D. Co.
 SCALE 1. IN. = 100 FT.

Columel and Cornelia Development Co. Mineral Mining District Arizona.



Scale
1200 Feet to 1 Inch
W. R. M.



1. Shaft	60'.0"	Cross Cut	20'.0"
2. "	50'.0"	Drift	30'.0"
3. "		Prospect Hole	
4. "		"	"
5. "		Tunnel	40'.0"
6. "	25'.0"		
7. "	30'.0"		
8. "	25'.0"	Open Cut	10'.0"
9. "	10'.0"	"	"
10. "	10'.0"	"	"
11. "		"	"
12. "		"	"
13. "		"	"
14. "	40'.0"	Drift	10'.0"
15. "		Open Cut	
16. "		"	"
17. "		"	"
18. "	10'.0"	"	"
19. "		"	"
20. "	15'.0"	"	"
21. "	20'.0"	"	"

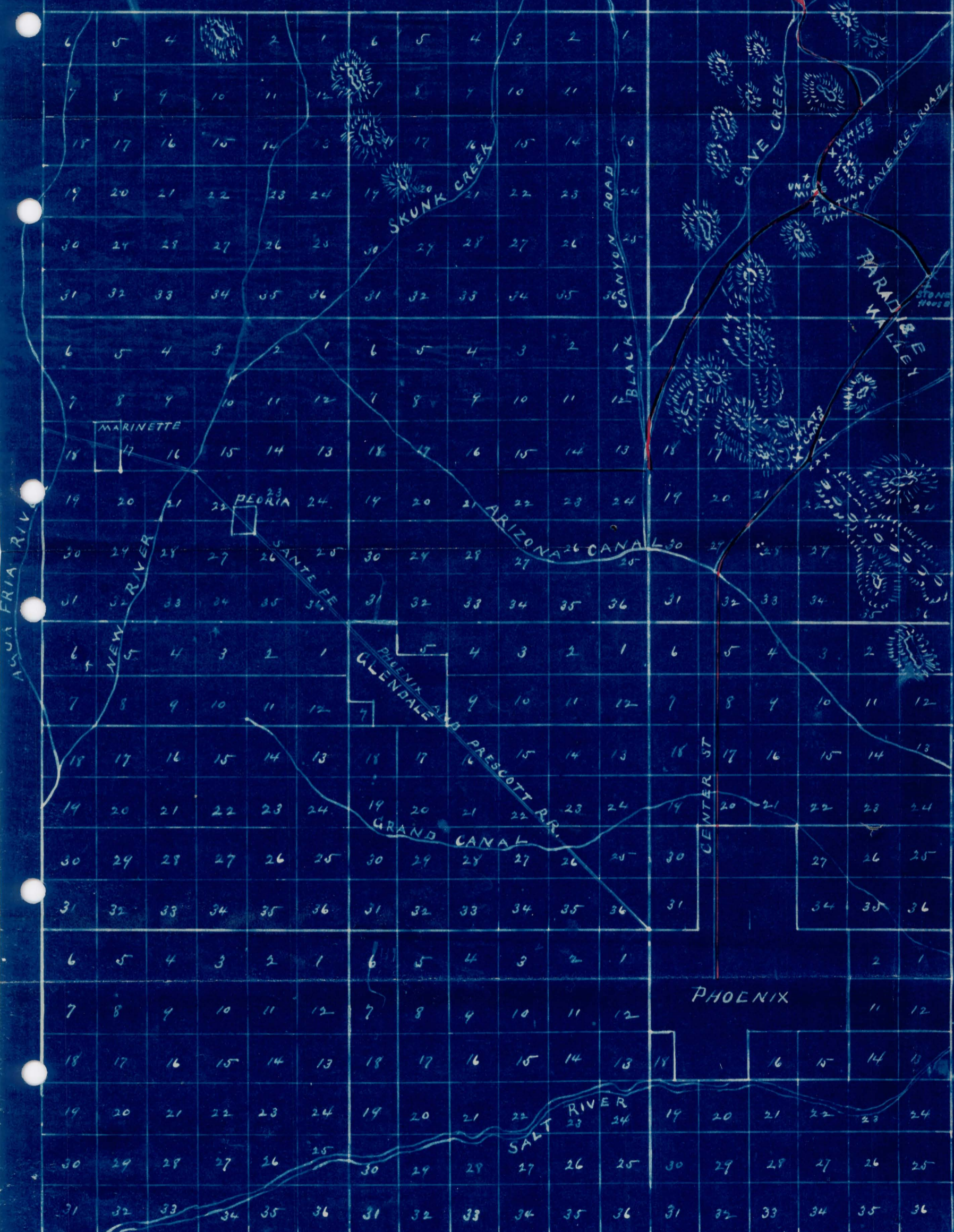
Sec. 33, T. 5.
N. R. 3. E

R. 1. E

R. 2. E

R. 3. E

CALUMET ^{INC} CORNELIA DEV. CO.
 18 1/2 CLAIMS. - 370 ACRES.
 CAPITAL 1,000,000 SHARES.
 737,481 SHARES IN TREASURY
 OCT. 1. 1918.
 90,000 SHARES FOR SALE
 25¢ A. SHARE
 20 MILES FROM GLENDALE
 25 MILES FROM PHOENIX.



RED LINES - BEST ROADS FROM PHOENIX AND GLENDALE.
 AGENTS - A.A. CARRICK - GLENDALE.