



CONTACT INFORMATION

Mining Records Curator
Arizona Geological Survey
1520 West Adams St.
Phoenix, AZ 85007
602-771-1601
<http://www.azgs.az.gov>
inquiries@azgs.az.gov

The following file is part of the

Arizona Department of Mines and Mineral Resources Mining Collection

ACCESS STATEMENT

These digitized collections are accessible for purposes of education and research. We have indicated what we know about copyright and rights of privacy, publicity, or trademark. Due to the nature of archival collections, we are not always able to identify this information. We are eager to hear from any rights owners, so that we may obtain accurate information. Upon request, we will remove material from public view while we address a rights issue.

CONSTRAINTS STATEMENT

The Arizona Geological Survey does not claim to control all rights for all materials in its collection. These rights include, but are not limited to: copyright, privacy rights, and cultural protection rights. The User hereby assumes all responsibility for obtaining any rights to use the material in excess of "fair use."

The Survey makes no intellectual property claims to the products created by individual authors in the manuscript collections, except when the author deeded those rights to the Survey or when those authors were employed by the State of Arizona and created intellectual products as a function of their official duties. The Survey does maintain property rights to the physical and digital representations of the works.

QUALITY STATEMENT

The Arizona Geological Survey is not responsible for the accuracy of the records, information, or opinions that may be contained in the files. The Survey collects, catalogs, and archives data on mineral properties regardless of its views of the veracity or accuracy of those data.

PRINTED: 12/18/2002

ARIZONA DEPARTMENT OF MINES AND MINERAL RESOURCES AZMILS DATA

PRIMARY NAME: CALIFORNIA MINE

ALTERNATE NAMES:

SANTA CRUZ COUNTY MILS NUMBER: 89A

LOCATION: TOWNSHIP 22 S RANGE 16 E SECTION 30 QUARTER NW
LATITUDE: N 31DEG 29MIN 45SEC LONGITUDE: W 110DEG 45MIN 20SEC
TOPO MAP NAME: NOGALES - 15 MIN

CURRENT STATUS: PAST PRODUCER

COMMODITY:

COPPER

LEAD

SILVER

BIBLIOGRAPHY:

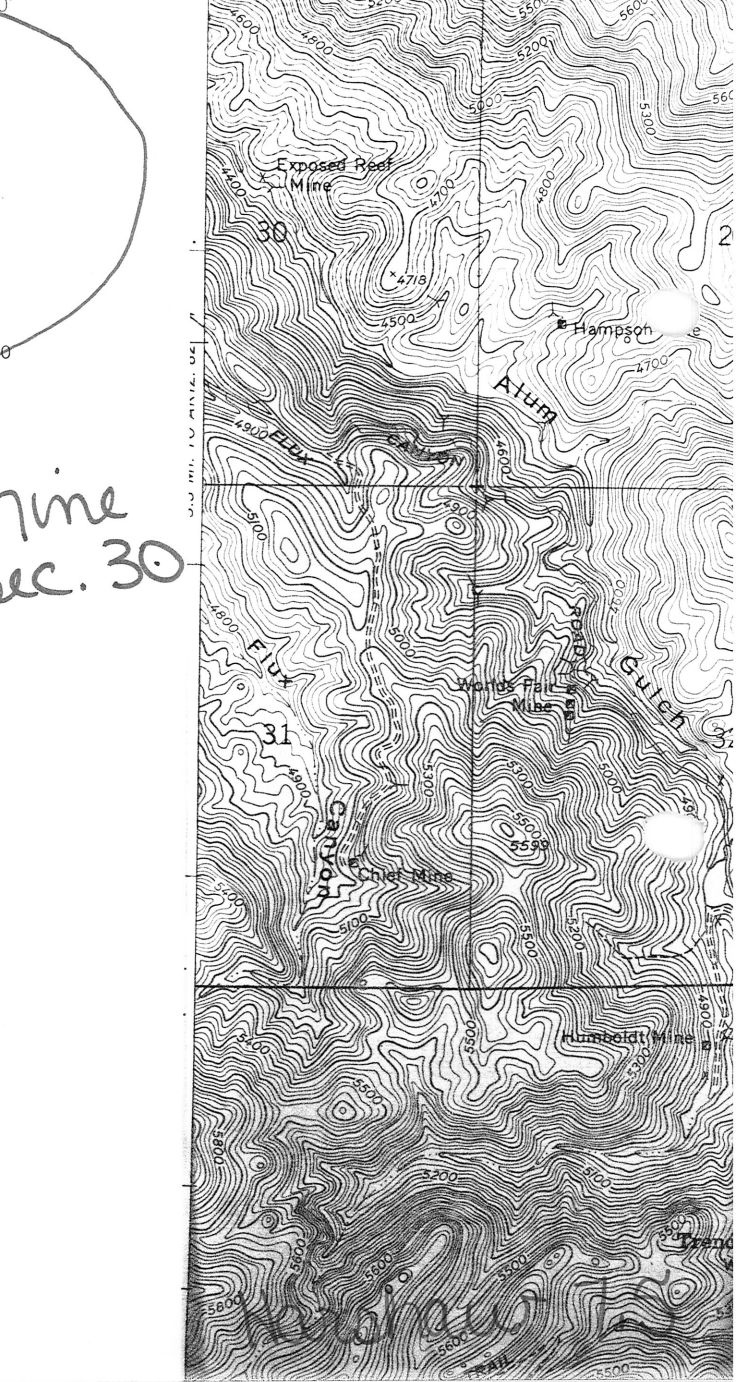
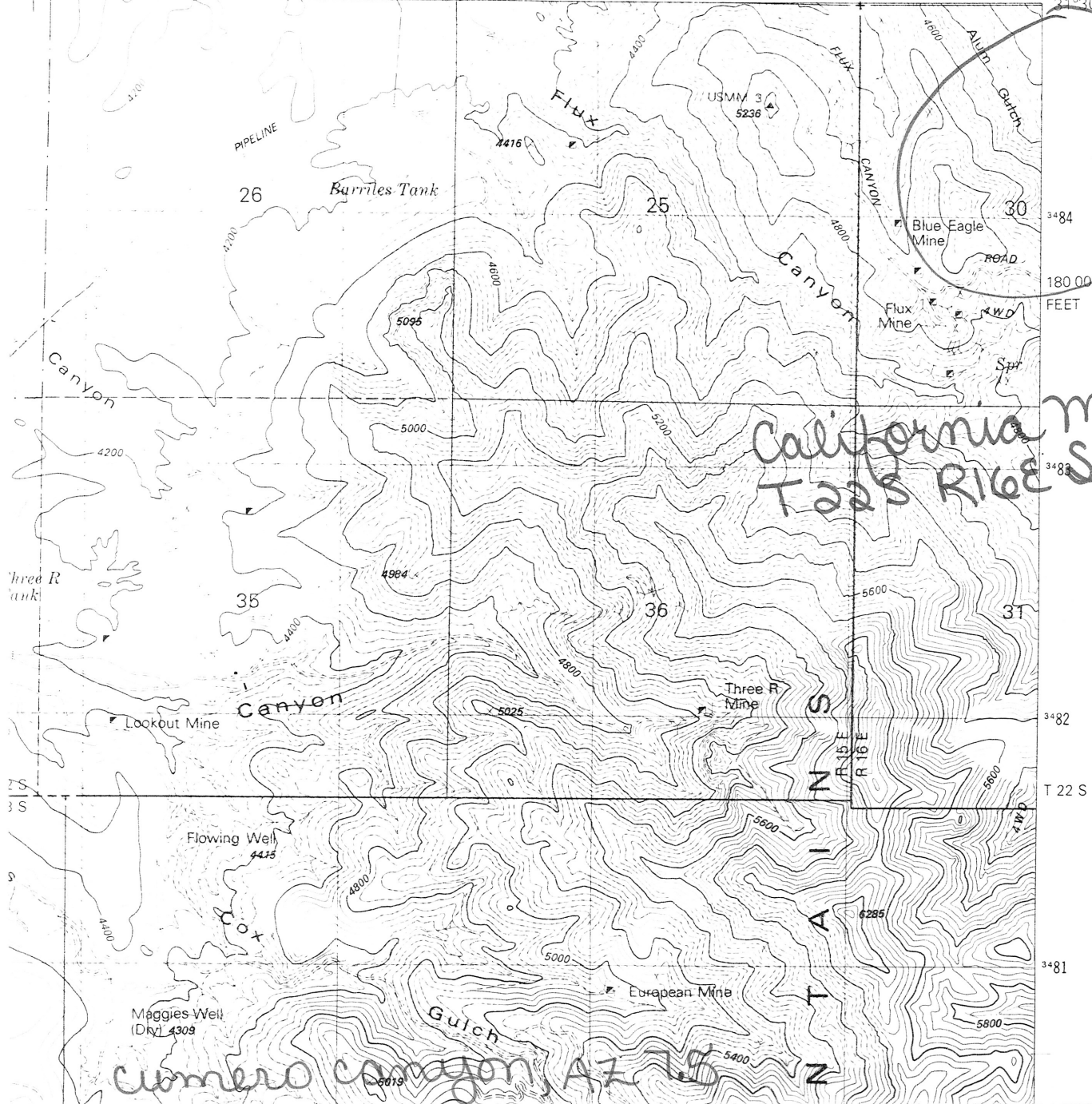
BLM MINING DISTRICT SHEETS 721
WARNER, ET.AL., 1959, OCCURRENCE OF NONPEGMA-
TITE BERYLLIUM IN THE US, USGS PROF. PAPER
318, P. 106
AZBM CARD FILE SANTA CRUZ CO.
AZBM BULL. 191, P. 57
ADM MR CALIFORNIA MINE FILE
USGS BULL. 582, P. 261, KARTCHNER, WAYNE E.,
1944, U OF A THESIS

CUMERO CANYON QUADRANGLE
 ARIZONA-SANTA CRUZ CO.
 7.5 MINUTE SERIES (TOPOGRAPHIC)
 NE 4 NOGALES 15' QUADRANGLE

3847 II SW
 (MT. HUGHES)

UNITED STATES
 DEPARTMENT OF THE INTERIOR
 GEOLOGICAL SURVEY
 10° 45' 524000m E.

47°30" 20' 21' 22' 860 000 FEET R 15 E R 16 E 110°45' 31°30'



Cumero Canyon, AZ 7.5

CALIFORNIA MINE

9/84

SANTA CRUZ COUNTY
HARSHAW DISTRICT
T22S R16E Sec. 30

MILS Index Santa Cruz #89A

USGS PP #318, p. 106

ABM Bull. 191, p. 57

USGS Bull. 582, p. 261

~~Geo file~~--Kartchner, Wayne E., 1944

Cumero Canyon, AZ & Harshaw AZ 7.5 (included in file)

* GENERAL REFERENCES

- REFERENCE 1 F1 < ABGMT-USBM F DATA >
- REFERENCE 2 F2 < USBM FILES, CALIFORNIA MINE >
- REFERENCE 3 F3 < BLM MINING DISTRICT MAP 721 >
- REFERENCE 4 F4 < SCHRADER FRANK C. 1915 MINERAL DEPOSITS OF THE SANTA RITA AND PATAGONIA MOUNTAINS ARIZONA; USGS BULLETIN 582, p. 261 >

L110 < SPORADICALLY FROM 1890'S TO 1920 >

K5 < OR LOOF - LODE NARROWS WITH DEPTH >

N5 < EXOTIC BLOCKS OF UPPER PALEOZOIC LIMESTONE >

N15 < FAULT >

N7 < APLITE; RHYOLITE VOLCANICS ARE CRUSHED, ALTERED, AND SILICIFIED >

F5 < KEITH, STANTON B. 1975 INDEX OF MINING PROPERTIES IN SANTA CRUZ COUNTY, ARIZONA; ARIZONA BUREAU OF MINES BULLETIN 191, p. 57 >

F6 < ABGMT FILES, STANTON B. KEITH >

F7 < ABGMT CLIPPINGS FILE, CALIFORNIA PROPERTY >

F8 < SIMONS, FRANK S. 1944 GEOLOGIC MAP AND SECTIONS OF THE NOGALES AND LOCHIEL QUADRANGLES, SANTA CRUZ COUNTY, ARIZONA. USGS MAP I-762 >

F9 < KARTCHNER, WAYNE E. 1944 THE GEOLOGY AND ORE DEPOSITS OF A PORTION OF THE HARSHAW DISTRICT, PATAGONIA MOUNTAINS, ARIZONA; PH.D. THESIS, UNIVERSITY OF ARIZONA, p. 82-84 >

Amcs # 89A

U.S. CRIB-SITE FORM

RECORD IDENTIFICATION

RECORD NUMBER B10 < _____ > RECORD TYPE B20 < X, I, M > DEPOSIT NUMBER B40 < _____ >

REPORT DATE G1 < 82.10.4 > INFORMATION SOURCE B30 < 12 > FILE LINK IDENT. B50 < USBM-004023 0139 >

REPORTER (SUPERVISOR) G2 < CALDER SUSAN R. > (last, first, middle initial)

REPORTER AFFILIATION G5 < ABGMT > SITE NAME A10 < CALIFORNIA MINE >

SYNONYMS A11 < _____ >

LOCATION

MINING DISTRICT/AREA A30 < HARSHAW DISTRICT >

COUNTY A60 < SANTA CRUZ > STATE A50 < AZ > COUNTRY A40 < U.S. >

PHYSIOGRAPHIC PROV A63 < 1.2.1 >

DRAINAGE AREA A62 < 1.5.0.5.0.3.0.1.1. LOWER COLORADO >

QUADRANGLE NAME A90 < NOGALES > (1, 1, 9, 5, 8, 1) LAND STATUS A64 < 4.1.1.1.1.1. (1, 9, 7, 9, 1) >

SECOND QUAD NAME A92 < _____ > QUADRANGLE SCALE A100 < 6, 2, 5, 0, 0 >

ELEVATION A107 < 4, 6, 5, 0, 1.1. FT. > SECOND QUAD SCALE A91 < _____ >

UTM

NORTHING A120 < 3484450 > ACCURACY *ACCURACY (circle ACC) (circle) ESTIMATED EST < _____ >

EASTING A130 < 523350 >

ZONE NUMBER A110 < 1.1.2 > GEODETIC

LATITUDE A70 < 31-29-42.N >

LONGITUDE A80 < 111-0-45-17.W >

CADASTRAL

TOWNSHIP(S) A77 < 0.2.25 > RANGE(S) A78 < 0.1.1.0.E >

SECTION(S) A79 < 30 >

SECTION FRACTION(S) A76 < CENTER OF NW >

MERIDIAN(S) A81 < GILA AND SALT RIVER >

POSITION FROM NEAREST PROMINENT LOCALITY A82 < 4.0 MILES SOUTH OF PATAGONIA; 1/2 MILE NE OF BLUE EAGLE MINE >

LOCATION COMMENTS A83 < LOCATED ON SW SIDE OF ALUM GULCH, ON FLUX MINE FAULT >

* ESSENTIAL INFORMATION
 * ESSENTIAL SOMETIMES OR HIGHLY RECOMMENDED

COMMODITY INFORMATION

*COMMODITIES PRESENT C10 < Cu, Ag, Pb, Zn, ... >
*ORE MINERALS C30 < ARGENTIFEROUS LEAD AND ZINC >
*COMMODITY SUBTYPES C41 < >
*GEN. ANALYTICAL DATA C43 < ORE VALUES AVERAGED ABOUT 15% Pb, 6 OZ./TON Ag, MINOR Cu AND Au >
*COM. INFO. COMMENTS C50 < >

SIGNIFICANCE

MAJOR PRODUCTS MAJOR < Pb, Ag, Au, ... >
MINOR PRODUCTS MINOR < Ag, Cu, Au, ... >
POTENTIAL PRODUCTS POTEN < >
OCCURRENCES OCCUR < Zn, ... >

*PRODUCTION

PRODUCTION YES (circle) PRODUCTION SIZE SMALL MED LGE (circle one)
NON-PRODUCER PRODUCTION UND NO (circle one)

*STATUS

EXPLORATION OR DEVELOPMENT
PRODUCER STATUS AND ACTIVITY A20 < 4 >
NON-PRODUCER STATUS AND ACTIVITY A20 < >

*DISCOVERER L20 < >
*YEAR OF DISCOVERY L10 < > *NATURE OF DISCOVERY L30 < > *YEAR OF FIRST PRODUCTION L40 < 1910 > *YEAR OF LAST PRODUCTION L45 < 1920 >
*PRESENT/LAST OWNER A12 < >
*PRESENT/LAST OPERATOR A13 < >

EXPL./DEV. COMMENTS L110 < OWNERS AND OPERATORS INCLUDED R.R. RICHARDSON, W.P. WILSON, ALLISON BROTHERS, FLUX EXTENSION MINING CO., E.E. BETHEL; PROPERTY COMPRISES 3 PATENTED CLAIMS; WORKED >

DESCRIPTION OF DEPOSIT

DEPOSIT TYPE(S) C40 < VEIN/SHEAR ZONE REPLACEMENT >
DEPOSIT FORM/SHAPE M10 < TABULAR; IRREGULAR >
DEPTH TO TOP M20 < > *UNITS M21 < > *MAXIMUM LENGTH M40 < 1.5 > *UNITS M41 < MILES >
DEPTH TO BOTTOM M30 < > *UNITS M31 < > *MAXIMUM WIDTH M50 < > *UNITS M51 < >
DEPOSIT SIZE M15 < SMALL > M15 < MEDIUM > M15 < LARGE > (circle one) *MAXIMUM THICKNESS M60 < > *UNITS M61 < >
STRIKE M70 < N-S > *DIP M80 < >
DIRECTION OF PLUNGE M100 < > *PLUNGE M90 < >
*REP. DESC. COMMENTS M110 < CALIFORNIA DEPOSIT LOCATED ON FLUX LOBE, IN MAIN N-S SHEAR ZONE; FLUX LOBE HAS KNOWN EXTENT OF 1.5 MILES >

DESCRIPTION OF WORKINGS

Workings ore: SURFACE M120 UNDERGROUND M130 BOTH M140 (circle one) *OVERALL LENGTH M190 < > *UNITS M191 < >
DEPTH BELOW SURFACE M160 < > *UNITS M161 < > *OVERALL WIDTH M200 < > *UNITS M201 < >
LENGTH OF WORKINGS M170 < > *UNITS M171 < > *OVERALL AREA M210 < > *UNITS M211 < >
DESC. OF WORK. COM. M220 < WORKINGS INCLUDED A 250-FT CROSS CUT DRIVEN TO STRIKE ORE BODY AT DEPTH, SHAFT, AND ADIT >

GEOLOGY

*AGE OF HOST ROCK(S) K1 < T.R.I. - JUR. >
*HOST ROCK TYPE(S) K1A < RHYOLITE PORPHYRY AND RELATED VOLCANIC SEDIMENTARY DEPOSITS >
*AGE OF IGNEOUS ROCK(S) K2 < T.R.I. >
*IGNEOUS ROCK TYPE(S) K2A < RHYOLITIC TO LATITIC LAVA AND TUFF WITH SOME TUFFACEOUS SANDSTONE OR GRIT >
*AGE OF MINERALIZATION K3 < L.C.R.E.T. - TERT. >
*PERT. MINERALS (NOT ORE) K4 < QUARTZITIC GANGUE, CHLORITE EPIDOTE HORNBLENDE HEMATITE >
*ORE CONTROL/LOCUS K6 < COMPLEX FLUX MINE FAULT SYSTEM; ORE MAINLY OCCURS IN N-S TRENDING SHEAR ZONE >
*MAJ. REG. TRENDS/STRUCT. N6 < NORTHWARD EXTENSION OF FLUX MINE MINERALIZATION; RHYOLITE CONTAINS ISOLATED >
*TECTONIC SETTING N16 < ALLUM GULCH FAULT BLOCK; COMPLEX FAULT SYSTEMS ASSOCIATED WITH HARSHAW CREEK >
*SIGNIFICANT LOCAL STRUCT. N70 < SEDIMENTARY ROCKS ARE LOCALLY INTERRUPTED BY QUARTZ MONZONITE (?) AND GRANITIC >
*SIGNIFICANT ALTERATION N75 < SURFACE OXIDATION TO DEPTHS OF 250 FT.; PYRITE GOSSAN AT SURFACE >
*PROCESS OF CONC./ENRICH. N80 < SECONDARY ENRICHMENT ALONG BRECCIATED ZONES >
*FORMATION AGE N30 < >
*FORMATION NAME N30A < >
*SECOND FM AGE N35 < >
*SECOND FM NAME N35A < >
*IGNEOUS UNIT AGE N50 < T.R.I. >
*IGNEOUS UNIT NAME N50A < MOUNT WRIGHTSON FORMATION >
*SECOND IG. UNIT AGE N55 < >
*SECOND IG. UNIT NAME N55A < >
*GEOLOGY COMMENTS N85 < GENERAL STRUCTURE COMMON TO REGIONAL FORMATIONS IS A SHEETING WHICH DIPS 40 NNW >

GENERAL COMMENTS

GENERAL COMMENTS GEN < SEE ALSO: FLUX MINE AND BLUE EAGLE MINE FOR GEOLOGIC INFORMATION >