



CONTACT INFORMATION

Mining Records Curator
Arizona Geological Survey
1520 West Adams St.
Phoenix, AZ 85007
602-771-1601
<http://www.azgs.az.gov>
inquiries@azgs.az.gov

The following file is part of the

Arizona Department of Mines and Mineral Resources Mining Collection

ACCESS STATEMENT

These digitized collections are accessible for purposes of education and research. We have indicated what we know about copyright and rights of privacy, publicity, or trademark. Due to the nature of archival collections, we are not always able to identify this information. We are eager to hear from any rights owners, so that we may obtain accurate information. Upon request, we will remove material from public view while we address a rights issue.

CONSTRAINTS STATEMENT

The Arizona Geological Survey does not claim to control all rights for all materials in its collection. These rights include, but are not limited to: copyright, privacy rights, and cultural protection rights. The User hereby assumes all responsibility for obtaining any rights to use the material in excess of "fair use."

The Survey makes no intellectual property claims to the products created by individual authors in the manuscript collections, except when the author deeded those rights to the Survey or when those authors were employed by the State of Arizona and created intellectual products as a function of their official duties. The Survey does maintain property rights to the physical and digital representations of the works.

QUALITY STATEMENT

The Arizona Geological Survey is not responsible for the accuracy of the records, information, or opinions that may be contained in the files. The Survey collects, catalogs, and archives data on mineral properties regardless of its views of the veracity or accuracy of those data.

PRINTED: 12/17/2002

ARIZONA DEPARTMENT OF MINES AND MINERAL RESOURCES AZMILS DATA

PRIMARY NAME: CABEZAS SPRING SILICA QUARRY

ALTERNATE NAMES:

MOHAVE COUNTY MILS NUMBER: 480A

LOCATION: TOWNSHIP 17 N RANGE 12 W SECTION 1 QUARTER S2
LATITUDE: N 34DEG 52MIN 35SEC LONGITUDE: W 113DEG 30MIN 00SEC
TOPO MAP NAME: TOM BROWN CANYON - 7.5 MIN

CURRENT STATUS: UNKNOWN

COMMODITY:
SILICON

BIBLIOGRAPHY:
AZ. STATE LAND DEPT. MINERAL MAP
ADMMR CABEZAS SPRING SILICA QUARRY FILE

CABEZAS SPRING SILICA QUARRIES

MOHAVE COUNTY

NJN WR 12/9/83: Willy Moulder reported he was applying for a state lease on S $\frac{1}{2}$, SW $\frac{1}{4}$, NW $\frac{1}{4}$, and the N $\frac{1}{2}$, NW $\frac{1}{4}$, Sec. 6, R11W, T12N. This covers one of the silica quarries that are part of the Cabezas Spring Silica Quarries. He may also try to obtain a lease on one of the other quarries which is on Santa Fe Land.

MINE AND PROSPECT FIELD VISIT DATA SUMMARY

MILS page 2836

Sheet 1 of 2

COMMODITIES Quartz - Silica

MILS ID No. 480A (unknown) Date September 2, 1982

ENGINEER Nyal J. Niemuth

INFORMATION FROM: Same

PROPERTY SUMMARY

I. MINE NAME #1-3 Cabezas Spring Silica Quarries OTHER POSSIBLE NAMES _____
INCLUDING ANY CLAIM NAMES NOTED _____

II. LOCATION: T 17N R 11 & 12 W SEC(S) 6NE $\frac{1}{2}$, NW $\frac{1}{4}$ 1 SE $\frac{1}{4}$ MINE DISTRICT Aquarius
ELEV. 4800'-5600' COUNTY Mohave TOPO QUAD. Gonzales Wash 7 $\frac{1}{2}$
DIRECTIONS As on Topo

MAP ATTACHED Yes

III. OWNERSHIP: NAME _____ PHONE _____
ADDRESS: _____
COMPANY NAME IF ANY: _____
PERTINENT-PEOPLE T17N R11W Sec. 6 is state owned.

IV. PROPERTY AND HOLDINGS: _____

V. PAST PRODUCTION - NOTED, KNOWN, PROBABLE, UNKNOWN, NONE Noted from all three.

IV. CURRENT STATUS: All abandoned

IIV. WORKINGS: 3 open pit quarries
Quarry #1 Approx. 100' X 40' x 10' open cut
Quarry #2 Approx 150' x 40' x 10' open cut slushed and/or shot down plunge.
Quarry #3 Approx 250' x 30' x (10-20') V shaped open cut slushed down plunge and dump of
less than one inch quartz.

IIV. GEOLOGY AND MINERALOGY: DEPOSIT TYPE: Pegmatite with large quartz core
for 800'
LENGTH: discontinuous WIDTH: 30-40' Linear Trend N20 $^{\circ}$ W Plunge -30 $^{\circ}$
HOST ROCK: Pink Granite
ECONOMIC MINERALS: Quartz

Quarry #1

COMMENTS: Simple zoned pegmatite with large quartz core and 10' wall zone of feldspar,
mica, quartz. Pegmatite is discontinuous appearing in an outcrop with more
quartz out crop appearing on trend to north and south

IX. EQUIPMENT ON SIGHT: Quarry #1 - None
Quarry #2 - Loading shoot with grizzly to screen dirt and fines 4'.
Quarry #3 Loading shoot with grizzly, vandalized gas truck with double drum slusher
winch.

X. SAMPLING: NOTE TYPE IF ANY, DRILLING? _____

XI. REFERENCES AND REMARKS Road improved as noted by solid line on map, last ¼ mile to Quarry #3 washed out.

QUARRY #2

Geology and mineralogy: Deposit Type: Pegmatite

Length: +750' Width: 30-60' Linear Trend N20°W Plunge 40°

Host Rock: Granite

Economic Minerals: Quartz

Comments: Simple zoned pegmatite with 5-10' wall zone of quartz, feldspar, mica and massive, up to 60' wide, quartz core that has a thickness of 5-10'.

QUARRY #3

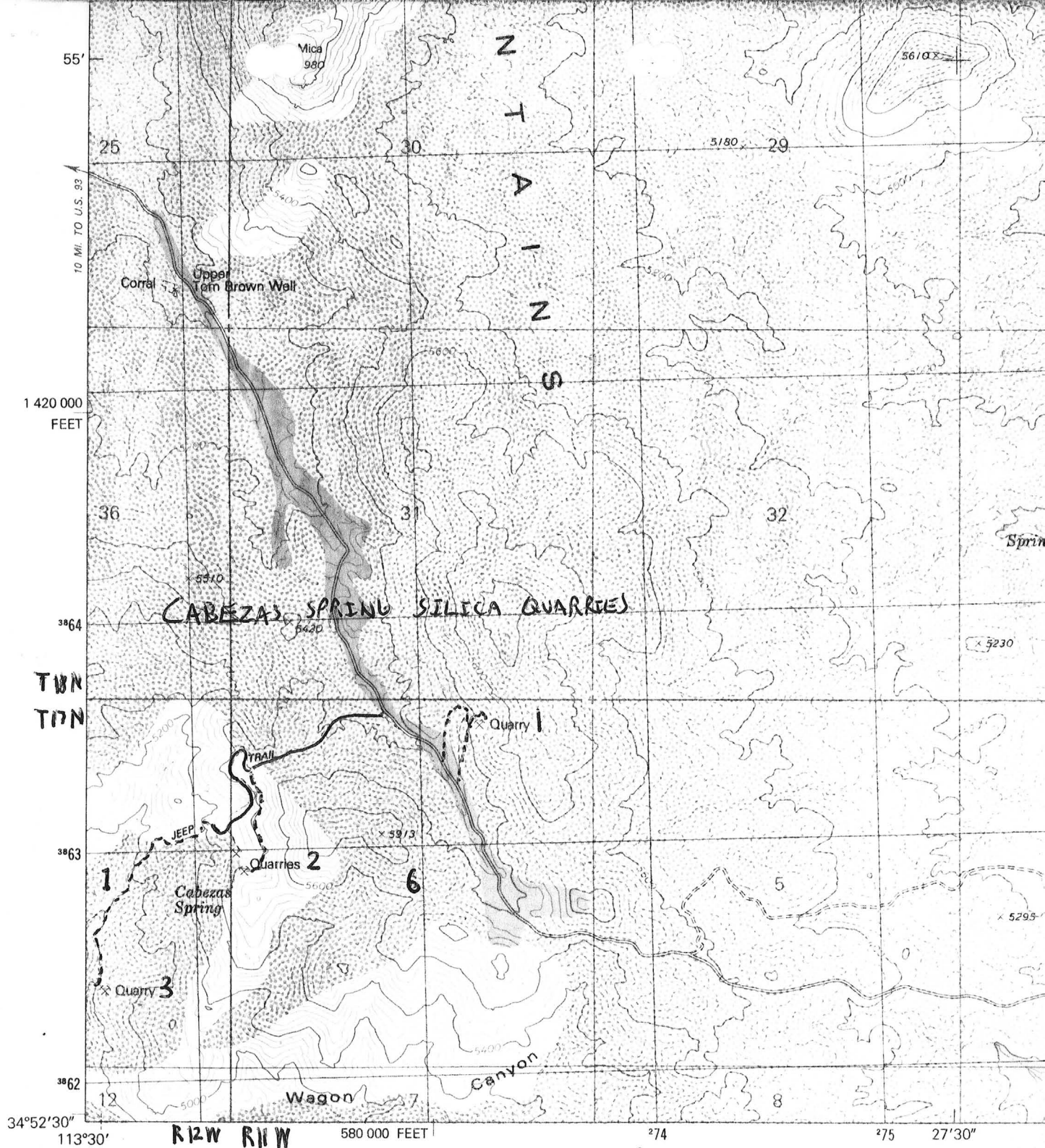
Geology and Mineralogy: Deposit Type: Pegmatite

Length: 500' plus Width: 50' and less Linear Trend N45°W Plunge 25°

Host Rock: Granite

Economic Minerals: Quartz

Comments: Simple zoned pegmatite with 3-10' wall zone of quartz, feldspar, mica and massive quartz core up to 50' wide. There are additional pegmatites with the same trend between quarries #1 and #3 that have not been mined and have the potential to produce additional quartz.

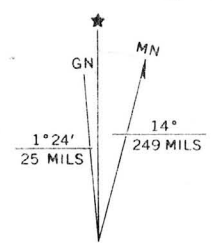


(TULE WASH)
2233 / SE

Mapped, edited, and published by the Geological Survey
Control by USGS and NOS/NOAA
Topography by photogrammetric methods from aerial
photographs taken 1973. Field checked 1975
Map edited 1980

Projection and 10,000-foot grid ticks: Arizona coordinate
system, west zone (transverse Mercator)
1000-meter Universal Transverse Mercator grid, zone 12
1927 North American Datum
To place on the predicted North American Datum 1983
move the projection lines 1 meter north and
70 meters east as shown by dashed corner ticks

GONZALES WASH 7 1/2



UTM GRID AND 1980 MAGNETIC NORTH
DECLINATION AT CENTER OF SHEET

MINE AND PROSPECT FIELD VISIT DATA SUMMARY

MILS page
2836

Sheet 1 of 2

COMMODITIES Quartz - Silica

MILS ID No. 480A (unknown) Date September 2, 1982

ENGINEER Nyal J. Niemuth

INFORMATION FROM: Same

PROPERTY SUMMARY

#1-3

I. MINE NAME Cabezas Spring Silica Quarries OTHER POSSIBLE NAMES _____
INCLUDING ANY CLAIM NAMES NOTED _____

II. LOCATION: T 17N R 11 & 12 W SEC(S) 6NE $\frac{1}{4}$, NW $\frac{1}{4}$ MINE DISTRICT Aquarius
ELEV. 4800' - 5600' COUNTY Mohave TOPO QUAD. Gonzales Wash 7 $\frac{1}{2}$
DIRECTIONS As on Topo

MAP ATTACHED Yes

III. OWNERSHIP: NAME _____ PHONE _____

ADDRESS: _____

COMPANY NAME IF ANY: _____

PERTINENT PEOPLE T17N R11W Sec. 6 is state owned.

IV. PROPERTY AND HOLDINGS: _____

V. PAST PRODUCTION - NOTED, KNOWN, PROBABLE, UNKNOWN, NONE Noted from all three.

IV. CURRENT STATUS: All abandoned

IIV. WORKINGS: 3 open pit quarries

Quarry #1 Approx. 100' X 40' x 10' open cut

Quarry #2 Approx 150' x 40' x 10' open cut slushed and/or shot down plunge.

less than one inch quartz.

Quarry #3 Approx 250' x 30' x (10-20') V shaped open cut slushed down plunge and dump of

IIV. GEOLOGY AND MINERALOGY: DEPOSIT TYPE: Pegmatite with large quartz core

LENGTH: discontinuous WIDTH: 30-40' Linear Trend N20 $^{\circ}$ W Plunge -30 $^{\circ}$

HOST ROCK: Pink Granite

ECONOMIC MINERALS: Quartz

COMMENTS: Simple zoned pegmatite with large quartz core and 10' wall zone of feldspar, mica, quartz. Pegmatite is discontinuous appearing in an outcrop with more quartz out crop appearing on trend to north and south

IX. EQUIPMENT ON SIGHT: Quarry #1 - None

Quarry #2 - Loading shoot with grizzly to screen dirt and fines 4'.

Quarry #3 Loading shoot with grizzly, vandalized gas truck with double drum slusher winch.

Quarry #1

OVER

X. SAMPLING: NOTE TYPE IF ANY, DRILLING? _____

XI. REFERENCES AND REMARKS Road improved as noted by solid line on map, last ¼ mile to Quarry #3 washed out.

QUARRY #2

Geology and mineralogy: Deposit Type: Pegmatite

Length: +750' Width: 30-60' Linear Trend N20°W Plunge 40°

Host Rock: Granite

Economic Minerals: Quartz

Comments: Simple zoned pegmatite with 5-10' wall zone of quartz, feldspar, mica and massive, up to 60' wide, quartz core that has a thickness of 5-10'.

QUARRY #3

Geology and Mineralogy: Deposit Type: Pegmatite

Length: 500' plus Width: 50' and less Linear Trend N45°W Plunge 25°

Host Rock: Granite

Economic Minerals: Quartz

Comments: Simple zoned pegmatite with 3-10' wall zone of quartz, feldspar, mica and massive quartz core up to 50' wide. There are additional pegmatites with the same trend between quarries #1 and #3 that have not been mined and have the potential to produce additional quartz.