



CONTACT INFORMATION

Mining Records Curator
Arizona Geological Survey
1520 West Adams St.
Phoenix, AZ 85007
602-771-1601
<http://www.azgs.az.gov>
inquiries@azgs.az.gov

The following file is part of the

Arizona Department of Mines and Mineral Resources Mining Collection

ACCESS STATEMENT

These digitized collections are accessible for purposes of education and research. We have indicated what we know about copyright and rights of privacy, publicity, or trademark. Due to the nature of archival collections, we are not always able to identify this information. We are eager to hear from any rights owners, so that we may obtain accurate information. Upon request, we will remove material from public view while we address a rights issue.

CONSTRAINTS STATEMENT

The Arizona Geological Survey does not claim to control all rights for all materials in its collection. These rights include, but are not limited to: copyright, privacy rights, and cultural protection rights. The User hereby assumes all responsibility for obtaining any rights to use the material in excess of "fair use."

The Survey makes no intellectual property claims to the products created by individual authors in the manuscript collections, except when the author deeded those rights to the Survey or when those authors were employed by the State of Arizona and created intellectual products as a function of their official duties. The Survey does maintain property rights to the physical and digital representations of the works.

QUALITY STATEMENT

The Arizona Geological Survey is not responsible for the accuracy of the records, information, or opinions that may be contained in the files. The Survey collects, catalogs, and archives data on mineral properties regardless of its views of the veracity or accuracy of those data.

PRINTED: 12/17/2002

ARIZONA DEPARTMENT OF MINES AND MINERAL RESOURCES AZMILS DATA

PRIMARY NAME: C A SCOTT

ALTERNATE NAMES:

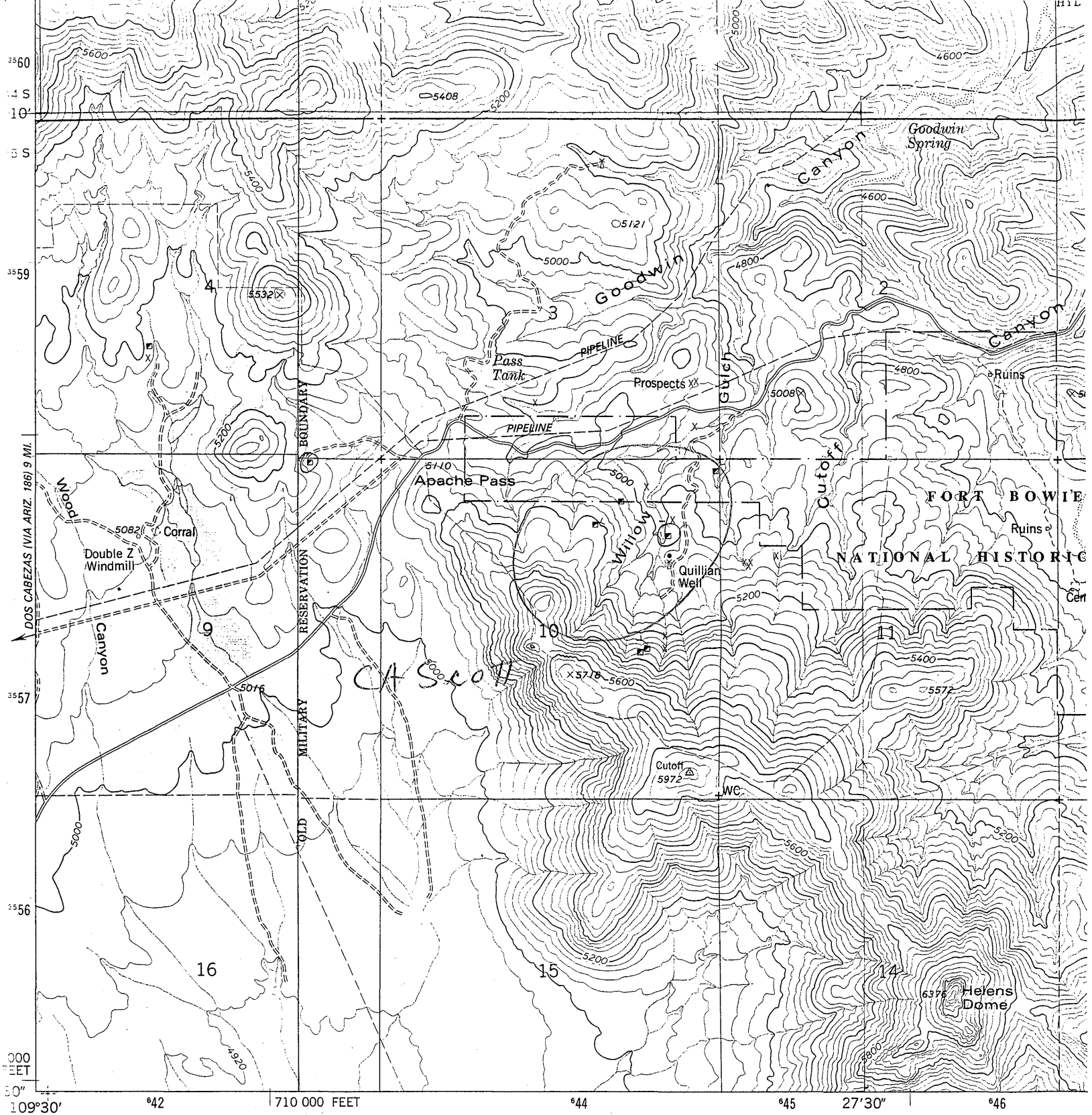
COCHISE COUNTY MILS NUMBER: 901

LOCATION: TOWNSHIP 15 S RANGE 28 E SECTION 10 QUARTER NE
LATITUDE: N 32DEG 08MIN 35SEC LONGITUDE: W 109DEG 28MIN 08SEC
TOPO MAP NAME: BOWIE MTN NORTH - 7.5 MIN

CURRENT STATUS: DEVEL DEPOSIT

COMMODITY:
GOLD PLACER

BIBLIOGRAPHY:
ADMMR C A SCOTT FILE



Mapped, edited, and published by the Geological Survey

Control by USGS and NOS/NOAA

Topography by photogrammetric methods from aerial photographs taken 1973. Field checked 1974. Map edited 1979

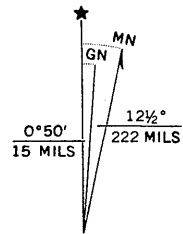
Projection and 10,000-foot grid ticks: Arizona coordinate system, east zone (transverse Mercator)

1000-meter Universal Transverse Mercator grid ticks, zone 12, shown in blue. 1927 North American datum

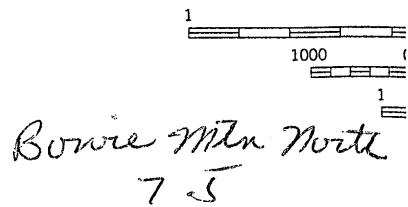
To place on the predicted North American Datum 1983 move the projection lines 8 meters south and 59 meters east as shown by dashed corner ticks

A portion of the northeast quarter of this map lies within a subsidence area
Vertical control based on latest available adjustment

Where omitted, land lines have not been established



UTM GRID AND 1979 MAGNETIC NORTH DECLINATION AT CENTER OF SHEET



THIS FOR SALE BY U. S. G. A FOLDER DI

HELENS DOME MINING COMPANY

COCHISE COUNTY

MG WR 5/21/82: Ms. Michele Dermer, GD&L Mining & Exploration Co. 3027-C Fillmore St. San Francisco, CA 94123, was in to look at the file on the Helens Dome Mining Company. I called the Phoenix office for information.

MG WR 9/30/83: Mr. C. A. Scott, P.O. Box 232, Bowie, Arizona 85605 has the C. A. Scott property in Cochise County. Gravity concentration equipment is employed to recover placer gold.

MG WR 10/7/83: Although the C. A. Scott property (see weekly report ending September 30, 1983,) is being operated as a placer, it is on ground that apparently comprised the Helens Dome (Quillin) lode mine. Therefore the Scott property should probably be included with or cross referenced to the Helens Dome Mine. The location is the NE $\frac{1}{4}$, Section 10, T15S, R28E Cochise County.

SENA



When done Mining to file

STATE MINE INSPECTOR

Office of State Mine Inspector

JUL 29 1983

705 West Wing, Capitol Building
Phoenix, Arizona 85007
602-255-5971

NOTICE TO ARIZONA STATE MINE INSPECTOR

In compliance with Arizona Revised Statute Section 27-303*, we are submitting this written notice to the Arizona State Mine Inspector (705 West Wing, Capitol Building, Phoenix, Arizona 85007) of our intent to start stop (please circle one) a mining operation.

COMPANY NAME C A SCOTT

CHIEF OFFICER C A SCOTT

COMPANY ADDRESS P.O. Box 232 Bowie AZ 85605

COMPANY TELEPHONE NUMBER 847-9506

MINE OR PLANT NAME same

MINE OR PLANT LOCATION (including county and nearest town, as well as directions for locating by vehicle)

So of Bowie on Apache pass Rd to
2 mi pass the old Fort Bowie monument to
side Rd to left goes to old Guila mine located at
end of Rd

TYPE OF OPERATION placer PRINCIPAL PRODUCT Gold

STARTING DATE July 30th CLOSING DATE _____

DURATION OF OPERATION unknown

PERSON SENDING THIS NOTICE C.A. Scott

TITLE OF PERSON SENDING THIS NOTICE owner

DATE NOTICE SENT TO STATE MINE INSPECTOR July 28 1983

see men operation

*A.R.S. Section 27-303 NOTIFICATION TO INSPECTOR OF BEGINNING OR SUSPENDING OPERATIONS: When mining operations are commenced in any mine or when operations therein are permanently suspended, the operator shall give written notice to the inspector at his office prior to commencement or suspension of operations.