



CONTACT INFORMATION

Mining Records Curator
Arizona Geological Survey
1520 West Adams St.
Phoenix, AZ 85007
602-771-1601
<http://www.azgs.az.gov>
inquiries@azgs.az.gov

The following file is part of the

Arizona Department of Mines and Mineral Resources Mining Collection

ACCESS STATEMENT

These digitized collections are accessible for purposes of education and research. We have indicated what we know about copyright and rights of privacy, publicity, or trademark. Due to the nature of archival collections, we are not always able to identify this information. We are eager to hear from any rights owners, so that we may obtain accurate information. Upon request, we will remove material from public view while we address a rights issue.

CONSTRAINTS STATEMENT

The Arizona Geological Survey does not claim to control all rights for all materials in its collection. These rights include, but are not limited to: copyright, privacy rights, and cultural protection rights. The User hereby assumes all responsibility for obtaining any rights to use the material in excess of "fair use."

The Survey makes no intellectual property claims to the products created by individual authors in the manuscript collections, except when the author deeded those rights to the Survey or when those authors were employed by the State of Arizona and created intellectual products as a function of their official duties. The Survey does maintain property rights to the physical and digital representations of the works.

QUALITY STATEMENT

The Arizona Geological Survey is not responsible for the accuracy of the records, information, or opinions that may be contained in the files. The Survey collects, catalogs, and archives data on mineral properties regardless of its views of the veracity or accuracy of those data.

PRINTED: 08-24-2012

ARIZONA DEPARTMENT OF MINES AND MINERAL RESOURCES AZMILS DATA

PRIMARY NAME: ASHFORK STONE YARD W.S.S.

ALTERNATE NAMES:

YAVAPAI COUNTY MILS NUMBER: 1326

LOCATION: TOWNSHIP 21 N RANGE 2 W SECTION 3 QUARTER NW
LATITUDE: N 35DEG 13MIN 59SEC LONGITUDE: W 112DEG 29MIN 30SEC
TOPO MAP NAME: ASH FORK - 15 MIN

CURRENT STATUS: PRODUCER

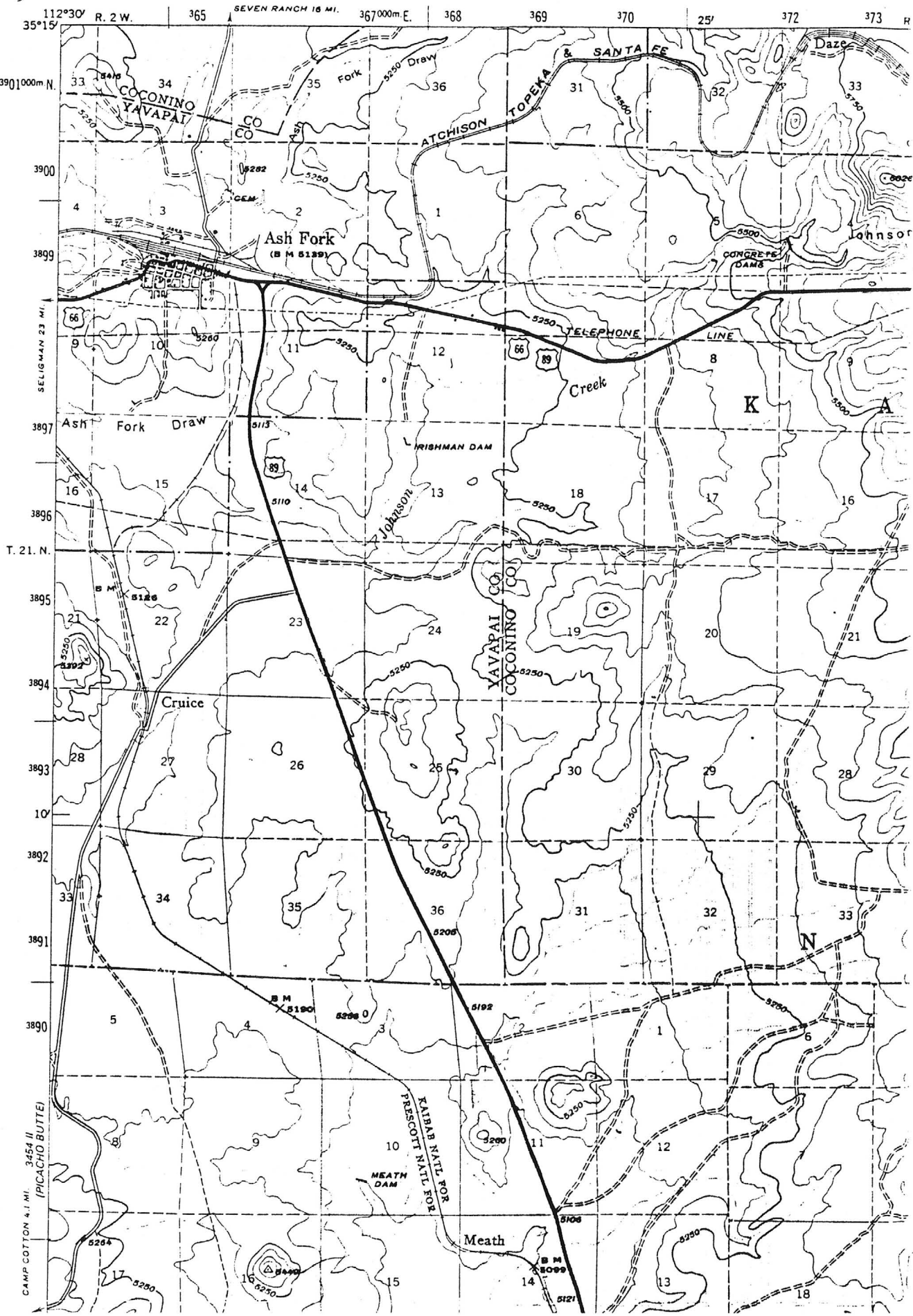
COMMODITY:
MILL

BIBLIOGRAPHY:
ADMMR ASHFORK STONE YARD W.S.S. FILE
THIS YARD CUTS TRIMS AND SAWS FLAGSTONE FROM
WESTERN STATES QUARRIES IN THE AREA.

3454 I SE
WIOSSE TRAP
MESA 1:24,000

UNITED STATES DEPARTMENT OF THE INTERIOR GEOLOGICAL SURVEY

DEPART



Ashfork Stone Yard W.S.S. File
Yavapai County

ABSTRACTED FROM ADMMR ACTIVE MINES DIRECTORY, 1992

WESTERN STATES STONE COMPANY

2830 Grand Ave., Phoenix, AZ 85017 - Phone 253-2018.

President C. E. Webster

Ashfork Plant T21N R2W Sec. 3

Quarries

P.O. Box 316 - Ash Fork, AZ 86220 - Phone 637-2542 - Employees: 40 -
Quarries located in Coconino, La Paz, Maricopa, Mohave, and Yavapai Counties -
Stone processing facility in Ashfork - Commercial and decorative building
stone marketed locally, out of state, and exported.

Superintendent Ismah Albright

ABSTRACTED FROM ADMMR ACTIVE MINES DIRECTORY, 1991

WESTERN STATES STONE COMPANY

2830 Grand Ave., Phoenix, AZ 85017 - Phone 253-2018.

President

C.E. Webster

Ashfork Plant T21N R2W Sec. 3

Quarries

P.O. Box 316 - Ash Fork, AZ 86220 - Phone 637-2542 - Employees: 40
- Quarries located in Coconino, La Paz, Maricopa, Mohave, and Yavapai
Counties - Stone processing facility in Ashfork - Commercial and decorative
building stone marketed locally, out of state, and exported.

Superintendent Ismah
Albright

ABSTRACTED FROM ADMMR ACTIVE MINES DIRECTORY, 1990

WESTERN STATES STONE COMPANY

2830 Grand Ave., Phoenix, AZ 85017 - Phone 253-2018.

President C.E. Webster

Ashfork Plant T21N R2W Sec. 3

Quarries

P.O. Box 316 - Ash Fork, AZ 86220 - Phone 637-2542 - Employees: 40

- Quarries located in Coconino, La Paz, Maricopa, Mohave, and Yavapai Counties - Stone processing facility in Ashfork - Commercial and decorative building stone marketed locally, out of state, and exported.

Superintendent Ismah Albright

ABSTRACTED FROM ADMMR ACTIVE MINES DIRECTORY, 1989

WESTERN STATES STONE COMPANY

2830 Grand Ave., Phoenix 85017 - Phone 253-2018.

President C.E. Webster

**Ashfork Plant
Quarries**

T21N R2W Sec. 3

P.O. Box 316 - Ash Fork 86220 - Phone 637-2542 - Employees 40 - Quarries located in Coconino, La Paz, Maricopa, Mohave, and Yavapai Counties - Stone processing facility in Ashfork - Commercial and decorative building stone marketed locally, out of state, and exported.

Superintendent Ismah Albright

ABSTRACTED FROM ADMMR ACTIVE MINES DIRECTORY, 1988

WESTERN STATES STONE COMPANY

2830 Grand Ave., Phoenix 85017 - Phone 253-2018.

President C.E. Webster

**Ashfork Plant
Quarries**

T21N R2W Sec. 3

P.O. Box 316 - Ash Fork 86220 - Phone 637-2542 - Employees 25 - Quarries located in Coconino, La Paz, Maricopa, Mohave, and Yavapai Counties - Stone processing facility in Ashfork - Commercial and decorative building stone marketed locally and out of state.

Superintendent Ismah Albright

Arizona Department of Mines and Mineral Resources

VERBAL INFORMATION SUMMARY 90


May be Reproduced

1. Information from: C.E. "Whitey" Webster, President - Western States Stone
Address: 2820 Grand Ave., Phoenix, AZ 85017 phone (602) 253-2018
2. Mine: Ashfork Stone Yard - W.S.S. (new) ADMRR Mine File same
4. County: Yavapai 5. District
6. Township 21 N Range 2 W Sec(s) 3 NW4
7. Location: in town of Ashfork
8. No. of Claims - Patented Unpatented
9. Owner (if different from above) same as above
10. Address: P.O. Box 316, Ashfork AZ 86220 phone (602) 637-2542
11. Operating Company: Western States Stone
12. Pertinent People and/or Firm: C.E. "Whitey" Webster
13. Commodities:
14. Operational Status: Producer
15. Summary of information received, comments, etc.:

Yavapai MILS #1326 (new)

Western States Stone operates about 15 flagstone quarries in the surrounding area. The stone from them is sent to this yard for processing. The yard employes about 20-25 men. The processing consists of grading by color, sorting by thickness, trimming with guillotines or cutting with diamond saws. The cutting may involve cutting to desired size or cutting slots to allow the attachment of brackets for fastening as building facia. Although just trimming is more common, currently 600 square feet a day in sawn.

Date: 9-5-85


(Signature)

ADMRR