



## **CONTACT INFORMATION**

Mining Records Curator  
Arizona Geological Survey  
1520 West Adams St.  
Phoenix, AZ 85007  
602-771-1601  
<http://www.azgs.az.gov>  
[inquiries@azgs.az.gov](mailto:inquiries@azgs.az.gov)

The following file is part of the

Arizona Department of Mines and Mineral Resources Mining Collection

## **ACCESS STATEMENT**

These digitized collections are accessible for purposes of education and research. We have indicated what we know about copyright and rights of privacy, publicity, or trademark. Due to the nature of archival collections, we are not always able to identify this information. We are eager to hear from any rights owners, so that we may obtain accurate information. Upon request, we will remove material from public view while we address a rights issue.

## **CONSTRAINTS STATEMENT**

The Arizona Geological Survey does not claim to control all rights for all materials in its collection. These rights include, but are not limited to: copyright, privacy rights, and cultural protection rights. The User hereby assumes all responsibility for obtaining any rights to use the material in excess of "fair use."

The Survey makes no intellectual property claims to the products created by individual authors in the manuscript collections, except when the author deeded those rights to the Survey or when those authors were employed by the State of Arizona and created intellectual products as a function of their official duties. The Survey does maintain property rights to the physical and digital representations of the works.

## **QUALITY STATEMENT**

The Arizona Geological Survey is not responsible for the accuracy of the records, information, or opinions that may be contained in the files. The Survey collects, catalogs, and archives data on mineral properties regardless of its views of the veracity or accuracy of those data.

PRINTED: 08-24-2012

ARIZONA DEPARTMENT OF MINES AND MINERAL RESOURCES AZMILS DATA

PRIMARY NAME: ARIZONA SILVER-COPPER

ALTERNATE NAMES:

LA PAZ COUNTY MILS NUMBER: 719

LOCATION: TOWNSHIP 4 N RANGE 16 W SECTION 22 QUARTER NW  
LATITUDE: N 33DEG 40MIN 47SEC LONGITUDE: W 113DEG 53MIN 34SEC  
TOPO MAP NAME: VICKSBURG - 15 MIN

CURRENT STATUS: PAST PRODUCER

COMMODITY:  
SILVER  
COPPER  
GOLD LODE

BIBLIOGRAPHY:  
ADMMR ARIZONA-SILVER FILE  
USBM FILE DATA

ARIZONA SILVER-COPPER COMPANY

REFERENCES

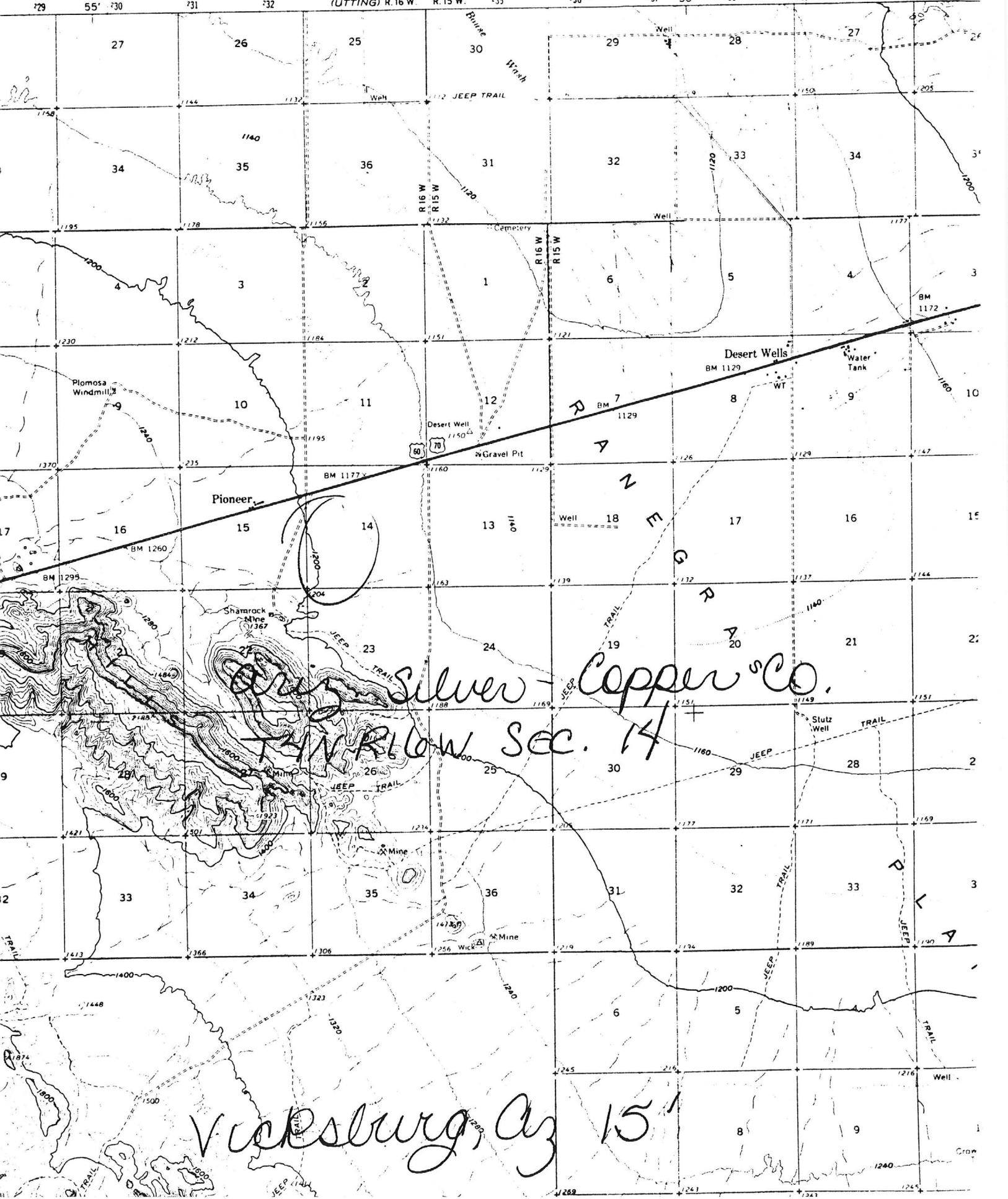
LA PAZ COUNTY  
PLOMOSA DIST.  
T4N R16W Sec. 14

La Paz County MILS Index #719

Arizona Mining Journal Aug. 1919, p. 15

Vicksburg, AZ 15' Topo (included in file)

3251 IV  
(UTTING) R. 16 W. R. 15 W.



Silver-Copper Co.  
T-1 N-16 W Sec. 14

Vicksburg, Az 15'

DEPARTMENT OF MINERAL RESOURCES  
STATE OF ARIZONA  
FIELD ENGINEERS REPORT

Mine Arizona Silver-Copper Co.

Date Apr. 10, 1952

District 9 m. SW Vicksburg

Engineer Mark Gemmill

Subject: Present Status

Property inactive and no information obtainable concerning owners

PH

DEPARTMENT OF MINERAL RESOURCES  
STATE OF ARIZONA  
OWNERS MINE REPORT

MA 14

Date 10/24/39

Mine Arizona Silver-Copper Co.

District Palomas

Location 9 miles S.W. of Vicksburg, Ariz.  
1/2 mile off Highway 60. Sign on Highway

Former name Shamrock Mining Co.

Owners Philip McEntee  
E. Lois Starr

Address Vicksburg, Ariz.

Operator Not working

Address Live at the mine

President E. Lois Starr

Mine Supt. None

Principal Metals Silver, copper and some go

Ag. Cu, Au

Yuma

T4 -

T4 N, R 16 W

Production Rate

Power: Amt. & Type 40 h.p. Fairbanks Mors

P. McEntee, Vicksburg

unclaimed 9-16-46  
DECEASED

Operations: Present

Operations Planned Small or large scale - come in and see for yourself

Number Claims, Title, etc. 42 claims - location title

Description: Topog. & Geog. Andesite and porphyry rock

Mine Workings: Amt. & Condition Picked sample of dump run  
24-28 in silver - 5.21 copper and 8-1 in alumina  
Perpendicular shaft down 165 ft. crosscut at bottom of shaft going east  
135 ft. showing red oxide at hematite of iron.

**Geology & Mineralization** Andesite and porphyritic rock.

**Ore: Positive & Probable, Ore Dumps, Tailings** We have a large deposit of manganese and also lead

**Mine, Mill Equipment & Flow Sheet** Hoist - hoist house - blacksmith shop and camp for small crew of men.

**Road Conditions, Route** Road is fine from highway to shaft

**Water Supply** Well about 3 miles from camp

**Brief History** A very good prospect for a mine. Practically virgin ground

**Special Problems, Reports Filed** Have ore which will pay but no money to get started

**Remarks** Will give half of ore shipped to whoever will help us get started

**If property for sale: Price, terms and address to negotiate.**

Will sell. Price reasonable

Also terms reasonable

P. O. Vicksburg, Ariz. (Come in)

We live at the mine

(SIGNED) E. LOUIS STAR<sup>R</sup>

Signed.....  
Philip McEntee, Vicksburg, Arizona

Use additional sheets if necessary.

Vicksburg, Ariz.  
July 12<sup>th</sup> 1940.

MR. J. S. Coupal, Director,  
DEPARTMENT OF MINERAL RESOURCES,  
STATE OF ARIZONA,  
CAPITAL BLDG.

DEAR MR. COUPAL:-

Wish to thank you kindly for  
your co-operation. Now Mr Coupal please push  
him to the front as this is the best prospect  
in Yuma County and has produced with  
best wishes to you

Yours Truly,

Philip 777 E Entee

Vicksburg  
Ariz.

P.S. This report is fine. Please excuse writing  
but forgot to get paper and wanted you to get  
this back.



BOARD OF GOVERNORS:  
CHARLES F. WILLIS, PHOENIX  
CHAIRMAN  
DR. N. H. MORRISON, PHOENIX  
VICE-CHAIRMAN

SHELTON G. DOWELL, DOUGLAS  
J. HUBERT SMITH, KINGMAN  
LLOYD C. EDMONSON, GLOBE

DEPARTMENT OF MINERAL RESOURCES  
STATE OF ARIZONA  
CAPITOL BUILDING  
PHOENIX, ARIZONA



J. S. COUPAL, PHOENIX  
DIRECTOR  
W. J. GRAHAM, PHOENIX  
ASSISTANT TO THE DIRECTOR  
AND SECRETARY TO THE  
BOARD OF GOVERNORS

FIELD OFFICES AT  
GLOBE - KINGMAN  
PRESCOTT - TUCSON

July 6, 1940.

REPLY TO

Mr. Philip McEntee,  
Vicksburg,  
Arizona.

Dear Mr. McEntee:

I am enclosing herewith a copy of Mine Owners Report which you have filed with the Department of Mineral Resources covering your property.

If you have any additional information on this property, I should suggest that you forward it for filing with this report.

Assuring you of my desire to be helpful, and with best wishes, I am

Yours very truly,

*J. S. Coupal*  
J. S. Coupal  
Director

JSC- amh