



CONTACT INFORMATION

Mining Records Curator
Arizona Geological Survey
1520 West Adams St.
Phoenix, AZ 85007
602-771-1601
<http://www.azgs.az.gov>
inquiries@azgs.az.gov

The following file is part of the

Arizona Department of Mines and Mineral Resources Mining Collection

ACCESS STATEMENT

These digitized collections are accessible for purposes of education and research. We have indicated what we know about copyright and rights of privacy, publicity, or trademark. Due to the nature of archival collections, we are not always able to identify this information. We are eager to hear from any rights owners, so that we may obtain accurate information. Upon request, we will remove material from public view while we address a rights issue.

CONSTRAINTS STATEMENT

The Arizona Geological Survey does not claim to control all rights for all materials in its collection. These rights include, but are not limited to: copyright, privacy rights, and cultural protection rights. The User hereby assumes all responsibility for obtaining any rights to use the material in excess of "fair use."

The Survey makes no intellectual property claims to the products created by individual authors in the manuscript collections, except when the author deeded those rights to the Survey or when those authors were employed by the State of Arizona and created intellectual products as a function of their official duties. The Survey does maintain property rights to the physical and digital representations of the works.

QUALITY STATEMENT

The Arizona Geological Survey is not responsible for the accuracy of the records, information, or opinions that may be contained in the files. The Survey collects, catalogs, and archives data on mineral properties regardless of its views of the veracity or accuracy of those data.

PRINTED: 01-17-2011

ARIZONA DEPARTMENT OF MINES AND MINERAL RESOURCES AZMILS DATA

PRIMARY NAME: BUSTER MINE GROUP

ALTERNATE NAMES:
SAM PESANO

PIMA COUNTY MILS NUMBER: 854

LOCATION: TOWNSHIP 14 S RANGE 12 E SECTION 26 QUARTER C
LATITUDE: N 32DEG 11MIN 02SEC LONGITUDE: W 111DEG 05MIN 15SEC
TOPO MAP NAME: CAT MOUNTAIN - 7.5 MIN

CURRENT STATUS: UNKNOWN

COMMODITY:
COPPER SULFIDE

BIBLIOGRAPHY:
ADDITIONAL WORKINGS SEC. 27-29, 33-35
ADMMR BUSTER MINE GROUP FILE
AZBM 106, P. 6

BUSTER MINE GROUP

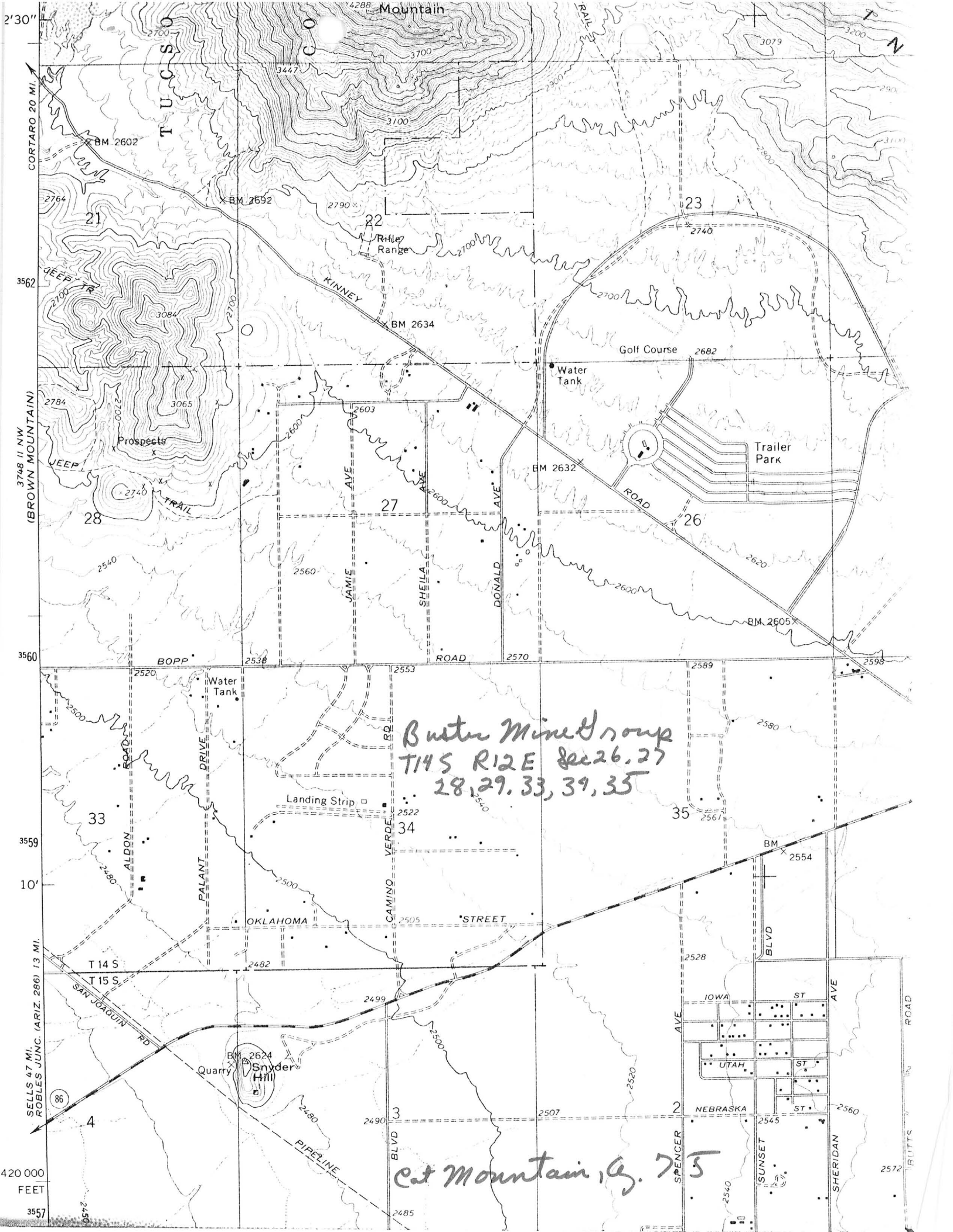
5/85

PIMA COUNTY
T14S R12E Sec 26, 27,
28, 29, 33, 34, 35

(Exploration project of Conoco)

USGS Cat Mountain, Az. 7.5 (Included in file)

MILS Index #854



2'30"
3562
3560
3559
10'
SELLS 47 MI. ROBLES JUNC. (ARIZ. 286) 1.3 MI.
420 000 FEET
3557

T U C S O N

Mountain

Butter Mine Group
T14S R12E Sec 26, 27
28, 29, 33, 39, 35

Cat Mountain, G. 75

CORTARO 20 MI.

3748 II NW (BROWN MOUNTAIN)

T 14 S
T 15 S

86

BM 2602

BM 2592

BM 2634

Prospects

BOPP

Water Tank

Landing Strip

OKLAHOMA

Quarry

Snyder Hill

PIPELINE

3447

2790

2603

2600

2560

2538

2520

2522

2505

BM 2624

2480

2490

4288

3100

2603

2600

2560

2553

2522

2505

2499

2480

2485

3700

2700

2600

2600

2560

2553

2522

2505

2499

2480

2485

2900

2700

2600

2600

2560

2553

2522

2505

2499

2480

2485

2900

2700

2600

2600

2560

2553

2522

2505

2499

2480

2485

2900

2700

2600

2600

2560

2553

2522

2505

2499

2480

2485

2900

2700

2600

2600

2560

2553

2522

2505

2499

2480

2485

2900

2700

2600

2600

2560

2553

2522

2505

2499

2480

2485

2900

2700

2600

2600

2560

2553

2522

2505

2499

2480

2485

2900

2700

2600

2600

2560

2553

2522

2505

2499

2480

2485

2900

2700

2600

2600

2560

2553

2522

2505

2499

2480

2485

2900

2700

2600

2600

2560

2553

2522

2505

2499

2480

2485

2900

2700

2600

2600

2560

2553

2522

2505

2499

2480

2485

2900

2700

2600

2600

2560

2553

2522

2505

2499

2480

2485

2572