



CONTACT INFORMATION

Mining Records Curator
Arizona Geological Survey
1520 West Adams St.
Phoenix, AZ 85007
602-771-1601
<http://www.azgs.az.gov>
inquiries@azgs.az.gov

The following file is part of the

Arizona Department of Mines and Mineral Resources Mining Collection

ACCESS STATEMENT

These digitized collections are accessible for purposes of education and research. We have indicated what we know about copyright and rights of privacy, publicity, or trademark. Due to the nature of archival collections, we are not always able to identify this information. We are eager to hear from any rights owners, so that we may obtain accurate information. Upon request, we will remove material from public view while we address a rights issue.

CONSTRAINTS STATEMENT

The Arizona Geological Survey does not claim to control all rights for all materials in its collection. These rights include, but are not limited to: copyright, privacy rights, and cultural protection rights. The User hereby assumes all responsibility for obtaining any rights to use the material in excess of "fair use."

The Survey makes no intellectual property claims to the products created by individual authors in the manuscript collections, except when the author deeded those rights to the Survey or when those authors were employed by the State of Arizona and created intellectual products as a function of their official duties. The Survey does maintain property rights to the physical and digital representations of the works.

QUALITY STATEMENT

The Arizona Geological Survey is not responsible for the accuracy of the records, information, or opinions that may be contained in the files. The Survey collects, catalogs, and archives data on mineral properties regardless of its views of the veracity or accuracy of those data.

PRINTED: 04-27-2005

ARIZONA DEPARTMENT OF MINES AND MINERAL RESOURCES AZMILS DATA

PRIMARY NAME: BURRO WASH GYPSUM

ALTERNATE NAMES:

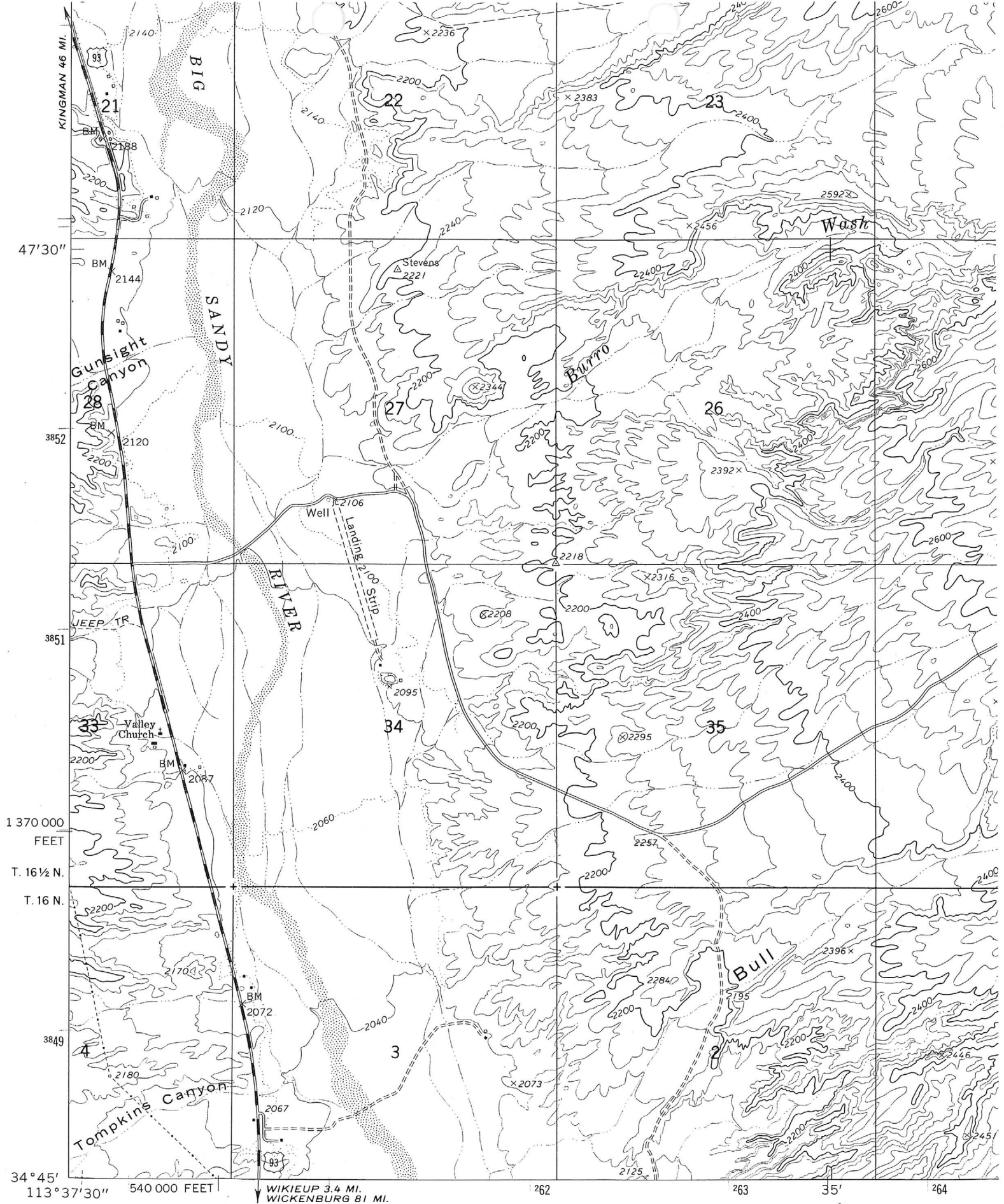
MOHAVE COUNTY MILS NUMBER: 476A

LOCATION: TOWNSHIP 16.5N RANGE 13 W SECTION 27 QUARTER C
LATITUDE: N 34DEG 47MIN 04SEC LONGITUDE: W 113DEG 36MIN 27SEC
TOPO MAP NAME: TULE WASH - 7.5 MIN

CURRENT STATUS: UNKNOWN

COMMODITY:
GYPSUM

BIBLIOGRAPHY:
ADMMR AZ INDUSTRIAL MINERALS RPT #2, P. 43
ADMMR BURRO WASH GYPSUM FILE



Mapped, edited, and published by the Geological Survey
 Control by USGS and USC&GS
 Topography by photogrammetric methods from aerial
 photographs taken 1966. Field checked 1967
 Polyconic projection. 1927 North American datum

TOLE WASH 7.5
 R13W
 1
 1000
 GN
 MN
 14 1/2°

P NW
 II NW

Gyp-1 wt 3# 6g Burro Wash
MINERAL SPECIMEN FOR DEPARTMENT OF LIBRARY ARCHIVES nm K138

(Do not write in this space)
Ore _____
Cabinet _____
No. _____

(Wrap each specimen separately, or place it in a substantial bag, by itself, with a number attached, identical with the number on this card.)
Specimen No. 3, collected by Robert E. Morrow
Field Engineer

Name of ore _____
Minerals contained Gypsum.
Gangue _____
Depth at which taken surface.
Approximate mineral content (in terms of average per ton) _____

Operator George Shupp.
Mine active or inactive inactive.
If inactive, when operated _____
Specimen presented by George Shupp.
Date March 12, 1940
Notes (Any general information regarding the history of the property.) _____

Name of mine or claim NW of Bagdad
Group Mohave Co
District Aquarius (Aquarius)
Location (distance and direction by highway from what town) _____
Owner of property George Shupp.

Ca SO₄ · 2H₂O
If m
ot
nmk138
n13-ww
4-05

BURRO WASH GYPSUM

REFERENCES

MOHAVE COUNTY
T16N R13W Sec. 27

Arizona Industrial Minerals - Report #2, ADMR p. 43

Gyp-1

wt 3# 6g
BX8X9.5cm

Burro Wash

MINERAL SPECIMEN FOR DEPARTMENT OF LIBRARY ARCHIVES

HM K138

(Do not write in this space)
Ore _____
Cabinet _____
No. _____

(Wrap each specimen separately, or place it in a substantial bag, by itself, with a number attached, identical with the number on this card.)

Specimen No. 3, collected by Robert E. Morrow
Field Engineer

Name of ore _____
Minerals contained Gypsum.
Gangue _____
Depth at which taken surface.
Approximate mineral content (in terms of average per ton) _____

Operator George Shupp.
Mine active or inactive inactive.
If inactive, when operated _____
Specimen presented by George Shupp.
Date March 12, 1940

Notes (Any general information regarding the history of the property.) _____

Name of mine or claim NW of Big Bend
Group Mohave Co
District Aquarius (Aquarius)
Location (distance and direction by highway from what town) _____
Owner of property George Shupp.

Ca SO₄ · 2H₂O

If more space is desired for notes, use other side.