



CONTACT INFORMATION

Mining Records Curator
Arizona Geological Survey
1520 West Adams St.
Phoenix, AZ 85007
602-771-1601
<http://www.azgs.az.gov>
inquiries@azgs.az.gov

The following file is part of the

Arizona Department of Mines and Mineral Resources Mining Collection

ACCESS STATEMENT

These digitized collections are accessible for purposes of education and research. We have indicated what we know about copyright and rights of privacy, publicity, or trademark. Due to the nature of archival collections, we are not always able to identify this information. We are eager to hear from any rights owners, so that we may obtain accurate information. Upon request, we will remove material from public view while we address a rights issue.

CONSTRAINTS STATEMENT

The Arizona Geological Survey does not claim to control all rights for all materials in its collection. These rights include, but are not limited to: copyright, privacy rights, and cultural protection rights. The User hereby assumes all responsibility for obtaining any rights to use the material in excess of "fair use."

The Survey makes no intellectual property claims to the products created by individual authors in the manuscript collections, except when the author deeded those rights to the Survey or when those authors were employed by the State of Arizona and created intellectual products as a function of their official duties. The Survey does maintain property rights to the physical and digital representations of the works.

QUALITY STATEMENT

The Arizona Geological Survey is not responsible for the accuracy of the records, information, or opinions that may be contained in the files. The Survey collects, catalogs, and archives data on mineral properties regardless of its views of the veracity or accuracy of those data.

PRINTED: 12/17/2002

ARIZONA DEPARTMENT OF MINES AND MINERAL RESOURCES AZMILS DATA

PRIMARY NAME: BURRO PIT

ALTERNATE NAMES:

COCHISE COUNTY MILS NUMBER: 36

LOCATION: TOWNSHIP 15 S RANGE 22 E SECTION 26 QUARTER SE
LATITUDE: N 32DEG 05MIN 47SEC LONGITUDE: W 110DEG 03MIN 55SEC
TOPO MAP NAME: DRAGOON - 7.5 MIN

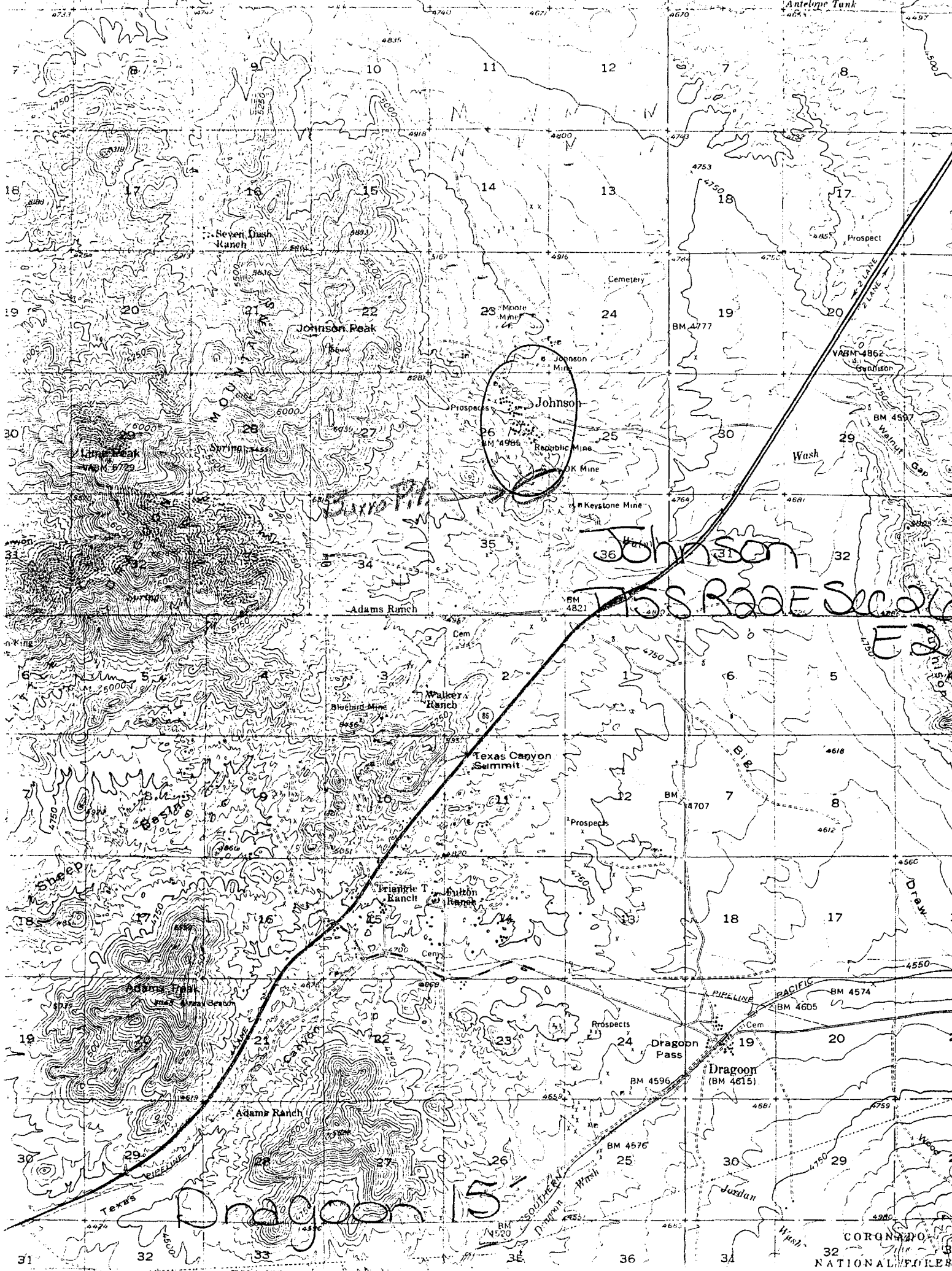
CURRENT STATUS: PAST PRODUCER

COMMODITY:

SILICON QUARTZITE
COPPER OXIDE
SILVER

BIBLIOGRAPHY:

KEITH, S.B., 1973, AZBM BULL. 187, P. 56
ADMMR BURRO PIT FILE



Seven Dash Ranch

Johnson Peak

Johnson

Johnson

Texas Road Sec 26

ES

Texas Canyon Summit

Adams Ranch

Dragoon Pass

Dragoon (BM 4615)

Adams Ranch

Dragoon 15

CORNADO NATIONAL FOREST

BURRO CLAIM

COCHISE COUNTY

Mine Visit to Burro Lease^Q - Ira Mosely working on new silica copper pit. GWI WR 4-11-70

The Burro lease at Johnson Camp continued shipping silica to Asarco at El Paso and sometimes Hayden. GWI QR 4-1-70

Active Mine List May 1970 - 4 men

The Burro lease at Johnson Camp (Ira Mosely) continued shipping copper silica flux to Asarco. The pit is being extended to the north and west of the old pit. GWI QR 6-30-70

Active Mine List Oct. 1970 - 3 men - Ira Mosely

Gerry Irvin called to say that the Burro lease and the Mame operations were both shut down. FTJ WR 12-4-70

The Burro lease at Johnson Camp continues shipping 6 cars of silica flux copper a week, mostly to Asarco El Paso. GWI QR 10-1-70

Mr. Ira Mosely has closed his his Burro lease operations at Johnson Camp. The mining area has been well fenced and posted. GWI QR 12-31-70

MG WR 7/19/85: The Strong and Harris copper deposit (Cochise County) is covered by the Norte and Surprise claim groups and is apparently centered on Sec 13, T15S R22E. The property is owned by 13 individuals, headed by Mr. Archie Durham, P O Box 30107, Albuquerque, NM 87190. ??

Bob Durham
840 S. Sam Houston
Tucson AZ 85719
With 622-2152

BURRO CLAIM

COCHISE COUNTY

Mine visit to Burro mine, Johnson Camp, mining copper and silica for El Paso.
GWI WR 9-14-68

Active Mine List Oct. 1968 - 4 men

Mine visit - GWI WR 11-16-68

Ira L. Moseley had his Burro lease ore agreement with Asarco cut in half, but is still shipping to El Paso. Present rate of this silica, copper flux is about 75 tpd.
GWI QR 12-1968

Ira L. Mosely of Willcox is shipping approximately 50 tons per day of copper silica flux to El Paso from his Burro lease. (rate varies from 0 to 200 tpd) Pay Dirt 3-24-69

Mine visit to Burro lease - Gerald Mosely shipping five cars a week. GWI WR 4-5-69

Active Mine List April 1969 - 3 men

Ira L. Moseley shipping silica from the Burro lease to El Paso and Hayden smelters of Asarco. The present pit is very deep and has steep sides. Future silica will probably come from the area further north. GWI QR 9-1969

Active Mine List Oct. 1969 - 4 men

BURRO MINE

COCHISE COUNTY

Ira. L. Mosely, Box 133, Willcox, Arizona, is continuing to mine copper-silica ore from the Burro open pit, in the Johnson district of Cochise County. Ore is hauled to Dragoon in trucks, then loaded in railroad cars for shipment to the Asarco Smelter in El Paso. Currently, shipments are at the rate of 500 tons weekly.

Taken from Pay Dirt June 23, 1967

Cyprus turned back the property that belonged to Strong and Harris, north of the old Pittsburg in Johnson Camp. Continental is looking at this property now.

Note GWI 12/14/67

Ira L. Mosely has started preparatory work on the Burro lease at Johnson Camp so that he can resume shipping copper silica ore to El Paso.

GWI Quarterly Report 4/1968

Active Mine List April 1968 - 2 men

Mine Visit to the Burro Mine, Johnson Camp. G & I Mosely operating again 3 men.

GWI WR 5/18/68

DEPARTMENT OF MINERAL RESOURCES
STATE OF ARIZONA
FIELD ENGINEERS REPORT

Mine Burro Claims Date May 13, 1965
District Cochise (Johnson) Dist., Cochise Co. Engineer Axel L. Johnson
Subject: Mine Visit. Information from Ira L. Moseley.

References Report of April 8, 1965

Owners Cyprus Mines Corp., P. O. Box 7187, Tucson, Ariz.

Lessees Ira L. Moseley & Sons, Box 133, Willcox, Ariz.
(Note change from last report and from the Active Mine List)

Principal Minerals Silica flux---high silica with a small amount of copper.

Present Mining Activity Mining ore in open pit, and shipping same to the American Smelting and Refining Co., El Paso, Texas for use as silica flux. 2 men working about 3 days per week. Production about 2,000 tons per month. The ore is hauled to Dragoon in trucks, and loaded in railroad cars for shipment to El Paso.

Visited Burro Claims talked with Gerald Mosely - 5 employees, 3000 tons per month. Were not shipping at time of visit due to strike at smelter. Were busy stripping overburden at time of visit.

GWI WR and Note 9/20/65

Visited the Burro Mine talked with Gerald Mosely - shipped a car in December. Nothing in January, expect to ship again in February.

GWI WR 1/17/66

Mine Visit - Gerald Mosely says they have three men employed, shipping 2000 tons per month to El Paso Smelter. Runs .7 to .8 Cu.

GWI WR 2/4/66

Mine Visit to the Burro operations of Ira Mosely. They have been temporarily cut off by the El Paso Smelter.

GWI WR 4/8/66

Mine visit - Burro operations at Johnson Camp. No one around, equipment all parked at garage or pit.

GWI WR 6/11/66

Visited the Burro operations of Mr. Mosely, talked with Gerald Mosely, shipping 50 tpd to El Paso. Started this month.

GWI WR 2/10/67

Visited Burro Lease - Gerald Mosely shipping 500 tpd to El Paso.

GWI WR 5/7/67

DEPARTMENT OF MINERAL RESOURCES

STATE OF ARIZONA

FIELD ENGINEERS REPORT

Mine Burro Claims Date April 8, 1965
District Cochise (Johnson) District, Cochise Co. Engineer Axel L. Johnson
Subject: Field Engineers Report. Information from Ira L. Moseley, and personal visit

Reference: Report of Dec. 6, 1963.

Present Mining Activity: Operators are producing about 250 to 300 tons per week of silica flux ore and shipping same to the American Smelting & Refining Co. smelter at El Paso, Texas. The ore is hauled to Dragoon in trucks and loaded in railroad cars for shipment to El Paso, Texas. 3 men are working about 2 days per week.

Ore Values: See report of Dec. 6, 1963.

DEPARTMENT OF MINERAL RESOURCES

STATE OF ARIZONA

FIELD ENGINEERS REPORT

Mine Burro Claims

Date December 6, 1963

District Cochise (Johnson) District, Cochise Co.

Engineer Axel L. Johnson

Subject: Field Engineers Report. Information from Ira L. Moseley, and personal visit.

References: Reports of Oct. 8, 1963 and May 15, 1963.

Present Mining Activity: Operators are producing about 1200 tons per week (5000 tons per month) of silica flux ore and shipping same to the Phelps Dodge smelter at Douglas. The ore is hauled to Dragoon in trucks and loaded in railroad cars for shipment to Douglas. 5 men working - 3 men on the mining operation and 2 truck drivers.

Ore Values: About 0.75% copper with 75% to 80% silica.

IRA. L. MOSELEY, Mgr. STRONG & HARRIS, Inc. Box 137, YRABODIUM, N. Mex. (Axel Johnson Oct. Mining Report 1965)

DEPARTMENT OF MINERAL RESOURCES

STATE OF ARIZONA

FIELD ENGINEERS REPORT

Mine Burro Claims

Date Oct. 8, 1963

District Cochise (Johnson) District, Cochise Co. Engineer Axel L. Johnson

Subject: Field Engineers Report. Information from Ira L. Moseley, and personal visit.

References Report of May 15, 1963.

Present Mining Activity Ready to start operating again tomorrow, Oct. 9, after being close down most of June, July, August, and September.

Operations will be resumed with 4 men working --- 2 men on the mining operations, and 2 truck drivers.

DEPARTMENT OF MINERAL RESOURCES
STATE OF ARIZONA
FIELD ENGINEERS REPORT

Mine Burro Claims

Date May 15, 1963

District Cochise (Johnson) District, Cochise Co.

Engineer Axel L. Johnson

Subject: Field Engineers Report. Personal visit, and information from operators.

References: Report of Dec. 6-13, 1962 & previous reports.

Present Mining Activity: Operators are producing ~~from~~ about 1,000 tons per week of silica flux ore and shipping same to the Phelps Dodge smelter at Douglas. 5 men working - 3 men on the mining operations and 2 truck drivers.

Operations were resumed on March 18 after being closed down for several months during last fall and winter.

Ore Values: Reported to run from 0.7% to 0.8% in copper and 75 to 80% in silica.

DEPARTMENT OF MINERAL RESOURCES

STATE OF ARIZONA
FIELD ENGINEERS REPORT

Mine Burro Claims Date Dec. 6 and Dec. 13, 1962
District Cochise (Johnson) District, Cochise Co. Engineer Axel L. Johnson
Subject: Field Engineers Report. Personal visit, and information from operators.

References Report of Aug. 20, 1962 and previous reports.

Present Activity Production of about 100 tons per day of silica flux ore and shipping same to the A. S. & R. smelter at Hayden. 2 men working. Ore, now being shipped was broken prior to closing of operations in Aug. 1962.

Temporarily closed down. - 1-21-63 - ALJ - WR

See: MINING WORLD, Feb. 1963, p 32

DEPARTMENT OF MINERAL RESOURCES

STATE OF ARIZONA

FIELD ENGINEERS REPORT

Mine Burro Claims Date August 30, 1962
District Cochise (Johnson) District, Cochise Co. Engineer Axel L. Johnson
Subject: Present Status. Information from W. D. Nelson.

References: Report of May 10, 1962.

Present Mining Activity: Property is idle at the present time. Reason for closing - no market for the ore. Until recently ore was shipped to the Phelps Dodge smelter at Douglas, but at the present time the Phelps Dodge Corp. is obtaining their silica flux from other sources.

See: MINING WORLD, July, 1962, p 41

DEPARTMENT OF MINERAL RESOURCES

STATE OF ARIZONA
FIELD ENGINEERS REPORT

Mine Burro Claims

Date May 10, 1962

District Cochise (Johnson) District, Cochise Co.

Engineer Axel L. Johnson

Subject: Present Status. Information from Ira L. Mosely and personal visit.

Box 137, Vanadium, N. Mexico (M.W. 7-62)

References: Report of Nov. 15, 1961 & previous reports.

Present Mining Activity: Production now about 1800 tons per week or about 7,500 tons per month. 3 men working - 6 days per week - 1 loader operator and 2 truck drivers. A Hough H 70 Payloader is used, alternately with a Diesel shovel, for loading the ore into the trucks.

Ore Values: Ore runs 0.9% copper, and about 65% silica.

Marketing: The ore is hauled to Dragoon with own trucks, from where it is shipped by rail to the A.S. & R. smelter at El Paso, Texas.

Note: - Until recently the ore was shipped to the Phelps Dodge smelter at Douglas.

DEPARTMENT OF MINERAL RESOURCES

STATE OF ARIZONA
FIELD ENGINEERS REPORT

Mine Burro Claims

Date Nov. 15, 1961

District Cochise (Johnson) District, Cochise Co. Engineer Axel L. Johnson

Subject: Present Status. Information from Ira L. Mosely and personal visit.

References Report of Sept. 14, 1961

Present Mining Activity Production now about 100 cars per month, or about 5,000 tons per month. 5 men working. A Hough H 70 Payloader is used, alternately with a Diesel shovel, for loading the ore into the trucks.

Ore Values Ore runs from 0.6 to 0.7 % in copper and about 80 % in silica.

Active 2-1962 - 5 men working

DEPARTMENT OF MINERAL RESOURCES
STATE OF ARIZONA
FIELD ENGINEERS REPORT

Mine Burro Claims

Date Sept. 14, 1961

District Cochise (Johnson) District, Cochise Co.

Engineer Axel L. Johnson

Subject: Present Status. Information from Gerald Mosely and personal visit.

Reference: Report of May 11, 1961.

Present Mining Activity: Production about 65 cars per month or about 3,250 tons per month. 6 men working. Most of the work now is stripping in preparation for greater production.

DEPARTMENT OF MINERAL RESOURCES

STATE OF ARIZONA
FIELD ENGINEERS REPORT

Mine \ Burro Claims

Date May 11, 1961

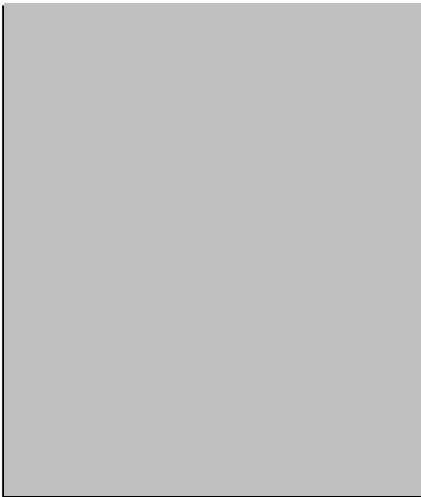
District Cochise (Johnson) District, Cochise Co. Engineer Axel L. Johnson

Subject: Present Status. Information from Gerald Mosely and personal visit.

References Report of Feb. 7, 1961

Present Mining Activity Same as for Feb. 7, 1961 report, except production is now about 140 cars per month or 7,000 tons per month.

Other Items Same as for Feb. 7, 1961 report.



DEPARTMENT OF MINERAL RESOURCES

STATE OF ARIZONA
FIELD ENGINEERS REPORT

Not for publication

Mine Burro Claims --- Cypress Exploration Date May 11, 1961

District Cochise (Johnson) District, Cochise Co. Engineer Axel L. Johnson

Subject: Field Engineers Report. Information from J. A. Journey and personal visit.

Owners Coronado Copper & Zinc Co., subsidiary of Cypress Mines Corp., 1223 Pacific Mutual Bldg., 523 W. 6th St., Los Angeles 14, Calif. ^{RUS}

Lessees Strong and Harris, Inc., Box 137, Vanadium, N. Mex.

Principal Minerals Copper oxide ores, with high silica content.

Present Mining Activity Diamond drilling by Coronado Copper & Zinc Co., subsidiary of Cypress Mines Corp. on contract to Joy Drilling Co. 1 diamond drill working.

Geology & Mineralization The mineralization is found along the contact between Abrigo shales and limestones and Bolsa quartzite, this contact dipping from 30 to 40 degrees to the N-NE, with the Abrigo formation lying on top of the Bolsa formation. The ore is found both in the Abrigo limestones and shales and in the Bolsa quartzite. The ore being mined by Strong and Harris at the present time is in the quartzite, and is being shipped to the Phelps Dodge smelter at Douglas for use as silica flux on account of its high silica content.

Ore Values The ore shipped to the smelter averages from 0.6 % to 0.7 % in copper and averages about 80 % silica.

Present Operations The diamond drilling is being done to determine the depth and location of the contact between the Abrigo limestones and shales and the Bolsa quartzite. This information is being obtained for the benefit of Strong and Harris, Inc., lessees, to assist them in the planning of future stripping operations.

4 diamond drill holes have been drilled to date, the holes being drilled at an angle of about 50 degrees with the vertical, and at approximately right angles to the contact. These holes have varied in depth from 200 to 300 ft. on the incline, and a 5th hole is now being drilled, which is down to 205 ft. on the incline. After each hole has penetrated a few feet into the Bolsa quartzite formation, it is stopped, as the necessary information has been obtained. A BX core is obtained, and the cores are saved. The cores obtained near the contact, showing mineralization, are assayed for copper and silica content.

Mr. Journey states that the exploration program was laid out and is being administrated by the company's Los Angeles office. Consequently, he does not know how many additional holes will be drilled.

Mr. Journey requested that this information not be published.

DEPARTMENT OF MINERAL RESOURCES

STATE OF ARIZONA
FIELD ENGINEERS REPORT

Mine Burro Claims

Date Feb. 7, 1961

District Cochise (Johnson) District, Cochise Co. Engineer Axel L. Johnson

Subject: Present Status. Information from Ira L. Mosely and personal visit.

References Report of ~~March~~^{Sept. 13}, 1960 and previous reports.

Present Mining Activity Open pit mining operations, using a Diesel shovel. 3 men working on the mining operations, and 3 truck drivers. Operators now are hauling the ore to Dragoon themselves (formerly contracted). Total of 6 men working. Ore production is from 100 to 110 cars per month or from 5,000 to 5,500 tons per month.

Ore Values Ore shipments are estimated to run from 0.6 % to 0.7 % copper, and 80 % in silica.

Marketing The ore is hauled to Dragoon, from where it is shipped by rail to the Phelps Dodge smelter at Douglas for use as silica flux.

Mining Operations Same as shown in report of March 3, 1960.

Equipment in use

- 1 Diesel shovel
- 1 Wagon drill
- 1 bulldozer - International Harvester TD 18A
- 1 Hough 2 yd. front end loader
- 5 Trucks semi trailer, 17 tons capacity.

DEPARTMENT OF MINERAL RESOURCES

STATE OF ARIZONA
FIELD ENGINEERS REPORT

Mine BURRO CLAIMS Date September 13, 1960
District Cochise (Johnson) District, Cochise Co. Engineer AXEL L. JOHNSON
Subject: Field Engineers Report. Information from Gerald Mosely & personal visit.

References: Report of June 15, 1960.

Present Mining Activity: Open pit mining operations, using a Diesel shovel. 2 men working in the mine - 1 shift, 6 days per week. 3 men doing ore hauling (Norton & Smick) - 1 shift, 3 days per week. Production is about 80 cars per month, or about 4,000 tons.

Geology: See report of April 15, 1959.

Ore Values: Mr. Mosely reports that ore shipments run from 0.6% to 0.7% in copper, with the silica running from 80 to 85%.

Marketing: The ore is hauled to Dragoon, from where it is shipped by rail to the Phelps Dodge smelter at Douglas for use as silica flux. Norton and Smick, Dragoon, Arizona, is hauling the ore on contract.

Mining Operations: Same as shown in report of March 3, 1960

Proposed Plans: Some stripping of rock and overburden will have to be done soon to uncover more ore.

Equipment in Use:

- 1 Diesel shovel
- 1 Wagon drill
- 1 bulldozer (old) - TD 14A
- 1 bulldozer (new) - International Harvester TD 18A
- Several trucks owned by Norton and Smick, ore haulers.

5

DEPARTMENT OF MINERAL RESOURCES

STATE OF ARIZONA
FIELD ENGINEERS REPORT

Mine ✓ Burro Claims

Date June 15, 1960

District Cochise (Johnson) District, Cochise Co.

Engineer Axel L. Johnson

Subject: Field Engineers Report. Information from Gerald Mosely & personal visit.

References: Reports of March 3, 1960 and April 15, 1959.

Location: Near Republic and Moore Mines at Johnson Camp.

Number of Claims: One unpatented claim being worked. A total of 8 unpatented claims under lease.

Owners: Coronado Copper and Zinc

Lessees & Operators: ✓ Strong and Harris, Inc.,
Box 137, Vanadium, N. Mex.
✓ Ira L. Mosely, Manager

Principal Minerals: Copper oxide ores, with high silica content.

Present Mining Activity: Open pit mining operations, using a Diesel shovel. 3 men working (1 shift, 6 days per week). Production about 200 tons per day, or about 5,000 tons per month.

Geology: See report of April 15, 1959.

Ore Values: Mr. Mosely reports that ore shipments average from 0.6 to 0.7% copper, with the silica now averaging about 85%.

Marketing: The ore is hauled to Dragoon, from where it is shipped by rail to the Phelps Dodge smelter at Douglas for use as silica flux. Norton and Smick, Dragoon, Arizona, is hauling the ore on contract.

Mining Operations: Same as shown in report of March 3, 1960.

DEPARTMENT OF MINERAL RESOURCES
STATE OF ARIZONA
FIELD ENGINEERS REPORT

Mine Burro Claim

Date March 3, 1960

District Cochise (Johnson) District, Cochise Co.

Engineer Axel L. Johnson

Subject: Field Engineers Report. Information from Ira L. Mosely and personal visit.

References Report of April 15, 1959

Location Near Republic and Moore Mines at Johnson Camp.

Number of Claims One

Owners Coronado Copper and Zinc

Lessees & Operators Strong and Harris, Inc.,
Box 137, Vanadium, N. Mex.
Ira L. Mosely, Manager.

Principal Minerals Copper oxide ores, with high silica content.

Present Mining Activity Open pit mining operations, using a Diesel shovel and trucks. 6 men working (1 shift, 6 days per week). Production about 5 carloads per day, or about 30 carloads per week.

Geology See report of April 15, 1959.

Ore Values Mr. Mosely reports that the ore shipped averages from 0.6 % to 0.7 % copper with about 80 % silica.

Marketing Operators are trucking the ore to Dragoon for shipment by rail to the Phelps Dodge smelter at Douglas, Ariz. Ore is used at the smelter for silica flux.

Mining Operations Blast holes are drilled with a 4" wagon drill. These holes are drilled to a depth of 16 to 20 ft. Carbomite powder from Apache Powder Co. is used for explosive. The trucks are loaded with a Diesel shovel, 3 trucks being in use.

Equipment

- 1 wagon drill
- 1 Diesel shovel
- 1 bulldozer
- 3 White trucks-- 8 to 9 ton capy.

New

DEPARTMENT OF MINERAL RESOURCES
STATE OF ARIZONA
FIELD ENGINEERS REPORT

Mine Burro Claim Date April 15, 1959
District Cochise (Johnson) District, Cochise Co. Engineer Axel L. Johnson
Subject: Field Engineers Report. Information from Ira L. Mosely, and personal visit.

Location: Near Republic and Moore mines at Johnson Camp.

Number of Claims: One

Owners: Coronado Copper and Zinc

Lessees and Operators: Strong and Harris, Inc.
Ira L. Mosely, Manager
Box 512, Lordsburg, N. Mexico

Principal Minerals: High silica copper ore

Present Mining Activity: Open pit operations, using a Diesel shovel and trucks. 4 men working (1 shift 6 days per week). Production 10 to 15 carloads per week.

Geology: The ore is found along the contact with the Abrigo Limestone and Quartzite. This contact dips about 30 degrees to the N-NE, with the quartzite on the footwall and the limestone on the hanging wall. The mineralization extends to a width of 15 to 20 ft. being part in the limestone and part in the quartzite.

Ore Values: Mr. Mosely reports that the ore shipped averages from 0.6% to 0.7% Copper, with 80 to 85% Silica.

Marketing: Operators are trucking the ore to Dragoon for shipment by rail to the Phelps Dodge smelter at Douglas, Arizona. Ore is used at the smelter for silica flux.

Equipment: 1 Bulldozer
1 Diesel shovel
2 Trucks
1 Wagon Drill

Exploration: Area on the limestone-quartzite contact is drilled with a 4" wagon drill, and samples of the drill cuttings are taken and assayed. The holes are drilled from 16 to 20 ft. in depth.

MINING WORLD 7-59



ARIZONA DEPARTMENT OF MINES AND GEOLOGICAL RESOURCES
Mineral Building, Fairgrounds
Phoenix, Arizona

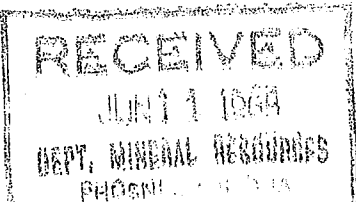
1. Information from: Gerald Mosely
Address: Box 133 Wilcox
2. Mine: Burro 3. No. of Claims - Patented _____
Unpatented _____
4. Location: ~~Cochise Dist~~ Johnson Camp
5. Sec _____ Tp _____ Range _____ 6. Mining District Cochise
7. Owner: Cyprus
8. Address: ☐
9. Operating Co.: IRA L. Mosely
10. Address: as above
11. President: _____ 12. Gen. Mgr.: _____
13. Principal Metals: _____ 14. No. Employed: 4
15. Mill, Type & Capacity: _____
16. Present Operations: (a) Down (b) Assessment work (c) Exploration
(d) Production (e) Rate _____ tpd.
4000
17. New Work Planned: _____
18. Misc. Notes: Pit deep steep sides, borders on west edge of future pit.
10 Cars per week 5 to El Paso 5 - Hayden.

Ira Mosely is still shipping to El Paso and Hayden in about equal parts, the pit located on the west side of the possible Cyprus orebody is deep with steep sides and is being extended where possible. CWI Quarterly Report 2/27/70

Date: 10-7-69

[Signature]
(Signature)

(Field Engineer)



ARIZONA DEPARTMENT OF MINERAL RESOURCES
Mineral Building, Fairgrounds
Phoenix, Arizona

Ira ~~Mo~~~~se~~~~l~~~~e~~~~y~~ Moseley

1. Information from: _____
Address: Fort Grant Road, Willcox Box 133.
2. Mine: Burro 3. No. of Claims - Patented _____
Unpatented _____
4. Location: Johnson Camp, between Keystone and ~~Johnson Mine~~ Republic Mine.
5. Sec _____ Tp _____ Range _____ 6. Mining District _____
7. Owner: Cyprus Mines Corp. Box 7187 Tucson
8. Address: _____
9. Operating Co.: Ira L Moseley
10. Address: Box 133 Willcox
11. President: Ira L. Moseley 12. Gen. Mgr.: Gerald Moseley
13. Principal Metals: _____ 14. No. Employed: 3
15. Mill, Type & Capacity: _____
16. Present Operations: (a) Down (b) Assessment work (c) Exploration
(d) Production (e) Rate _____ tpd.
17. New Work Planned: _____

18. Miscl. Notes: Mining about 150 Tons per day of silica flux for ASARCO

Date: 5-14-68

(Signature)

(Field Engineer)