



CONTACT INFORMATION

Mining Records Curator
Arizona Geological Survey
1520 West Adams St.
Phoenix, AZ 85007
602-771-1601
<http://www.azgs.az.gov>
inquiries@azgs.az.gov

The following file is part of the

Arizona Department of Mines and Mineral Resources Mining Collection

ACCESS STATEMENT

These digitized collections are accessible for purposes of education and research. We have indicated what we know about copyright and rights of privacy, publicity, or trademark. Due to the nature of archival collections, we are not always able to identify this information. We are eager to hear from any rights owners, so that we may obtain accurate information. Upon request, we will remove material from public view while we address a rights issue.

CONSTRAINTS STATEMENT

The Arizona Geological Survey does not claim to control all rights for all materials in its collection. These rights include, but are not limited to: copyright, privacy rights, and cultural protection rights. The User hereby assumes all responsibility for obtaining any rights to use the material in excess of "fair use."

The Survey makes no intellectual property claims to the products created by individual authors in the manuscript collections, except when the author deeded those rights to the Survey or when those authors were employed by the State of Arizona and created intellectual products as a function of their official duties. The Survey does maintain property rights to the physical and digital representations of the works.

QUALITY STATEMENT

The Arizona Geological Survey is not responsible for the accuracy of the records, information, or opinions that may be contained in the files. The Survey collects, catalogs, and archives data on mineral properties regardless of its views of the veracity or accuracy of those data.

PRINTED: 12/11/2002

ARIZONA DEPARTMENT OF MINES AND MINERAL RESOURCES AZMILS DATA

PRIMARY NAME: BUGGER GROUP

ALTERNATE NAMES:

MARICOPA COUNTY MILS NUMBER: 87

LOCATION: TOWNSHIP 5 N RANGE 10 W SECTION 28 QUARTER NE
LATITUDE: N 33DEG 44MIN 50SEC LONGITUDE: W 113DEG 18MIN 00SEC
TOPO MAP NAME: LONE MOUNTAIN - 15 MIN

CURRENT STATUS: UNKNOWN

COMMODITY:
COPPER
SILVER
GOLD LODE

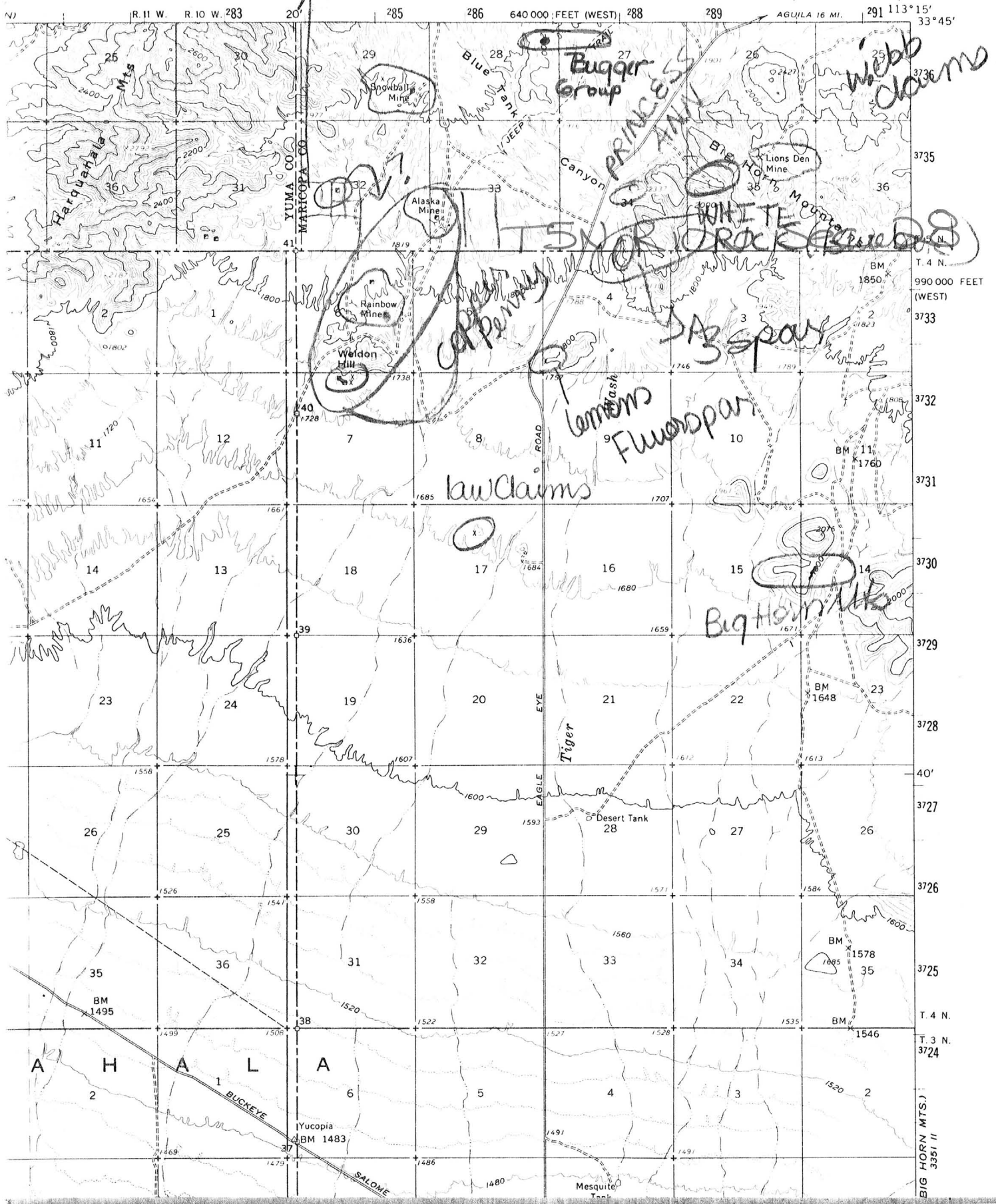
BIBLIOGRAPHY:
ADMMR BUGGER GROUP FILE

Gunsight?

11 V Navajo

LONE MOUNTAIN QUADRANGLE
ARIZONA
15 MINUTE SERIES (TOPOGRAPHIC)

3251 1 (AGUILA)



BUGGER CLAIMS

MARICOPA COUNTY

Conference with B. H. Chisholm at Bouse

Mr. Chisholm reported no new developments at his Bugger Claim $1\frac{1}{2}$ miles north of the Alaska mine. He said that he had had two feelers but nothing came of them. The Alaska mine is in the SE $\frac{1}{4}$ Sec. 32 and the SW $\frac{1}{4}$ sec. 33, T5N, R10W.
Memo LAS 6-11-65

STATE OF ARIZONA
DEPARTMENT OF MINERAL RESOURCES

MINERAL BUILDING, FAIRGROUNDS
PHOENIX, ARIZONA 85007



March 25, 1968

C
O
P
Y
Mrs. Mathea Haslett
P.O. Box 16006
San Antonio, Texas 78216

Dear Mrs. Haslett:

This is in reply to your letter of March 23, 1968 asking for information on the Bugger group of claims southwest of Aguila.

Our information here is that the Bugger group consist of 7 unpatented mining claims located in the foothills on the southeast side of the Harquahala Mountains, twenty two miles southeast of Salome, and about 18 miles southwest of Aguila.

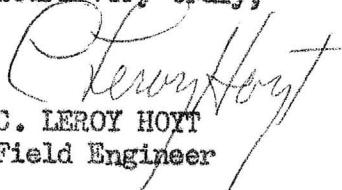
In June of 1964 one of our Field Engineers reported briefly on this property. He stated that at the time the mine was owned by Mr. James Chisholm of Bouse, Arizona, who claimed copper and silver mineralization, with local spots running from \$5.50 to \$35.00 per ton in gold.

The property was reported as being $1\frac{1}{2}$ miles north of the Alaska Mine, which would put the Bugger Group in Sections 28 and 29, T. 5 N., R. 10 W. of the Gila and Salt River Base and Meridian, just about a mile from the Yuma County line. This is in the Big Horn Mining District. The owner then considered the mineralization to be an extension of that in the Alaska.

We can find no information on any production from the Bugger Claims. Arizona Bureau of Mines Bulletin 137, "Arizona Lode Gold Mines and Gold Mining" issued in 1934 reports on the "Alaskan Mine" which from the description is the same as the Alaska mentioned above. At that time the Alaskan had produced 722 tons of copper ore with values in gold and silver.

We hope this gives you the information you desire.

Yours very truly,


C. LEROY HOYT
Field Engineer

CLH/H