



CONTACT INFORMATION

Mining Records Curator
Arizona Geological Survey
1520 West Adams St.
Phoenix, AZ 85007
602-771-1601
<http://www.azgs.az.gov>
inquiries@azgs.az.gov

The following file is part of the

Arizona Department of Mines and Mineral Resources Mining Collection

ACCESS STATEMENT

These digitized collections are accessible for purposes of education and research. We have indicated what we know about copyright and rights of privacy, publicity, or trademark. Due to the nature of archival collections, we are not always able to identify this information. We are eager to hear from any rights owners, so that we may obtain accurate information. Upon request, we will remove material from public view while we address a rights issue.

CONSTRAINTS STATEMENT

The Arizona Geological Survey does not claim to control all rights for all materials in its collection. These rights include, but are not limited to: copyright, privacy rights, and cultural protection rights. The User hereby assumes all responsibility for obtaining any rights to use the material in excess of "fair use."

The Survey makes no intellectual property claims to the products created by individual authors in the manuscript collections, except when the author deeded those rights to the Survey or when those authors were employed by the State of Arizona and created intellectual products as a function of their official duties. The Survey does maintain property rights to the physical and digital representations of the works.

QUALITY STATEMENT

The Arizona Geological Survey is not responsible for the accuracy of the records, information, or opinions that may be contained in the files. The Survey collects, catalogs, and archives data on mineral properties regardless of its views of the veracity or accuracy of those data.

PRINTED: 12/11/2002

ARIZONA DEPARTMENT OF MINES AND MINERAL RESOURCES AZMILS DATA

PRIMARY NAME: BUFFALO

ALTERNATE NAMES:

GOLDEN ROSE
JEFFERSON
LEAD QUEEN
WIELAND GROUP

SANTA CRUZ COUNTY MILS NUMBER: 19B

LOCATION: TOWNSHIP 22 S RANGE 16 E SECTION 33 QUARTER NW
LATITUDE: N 31DEG 29MIN 02SEC LONGITUDE: W 110DEG 43MIN 07SEC
TOPO MAP NAME: HARSHAW - 7.5 MIN

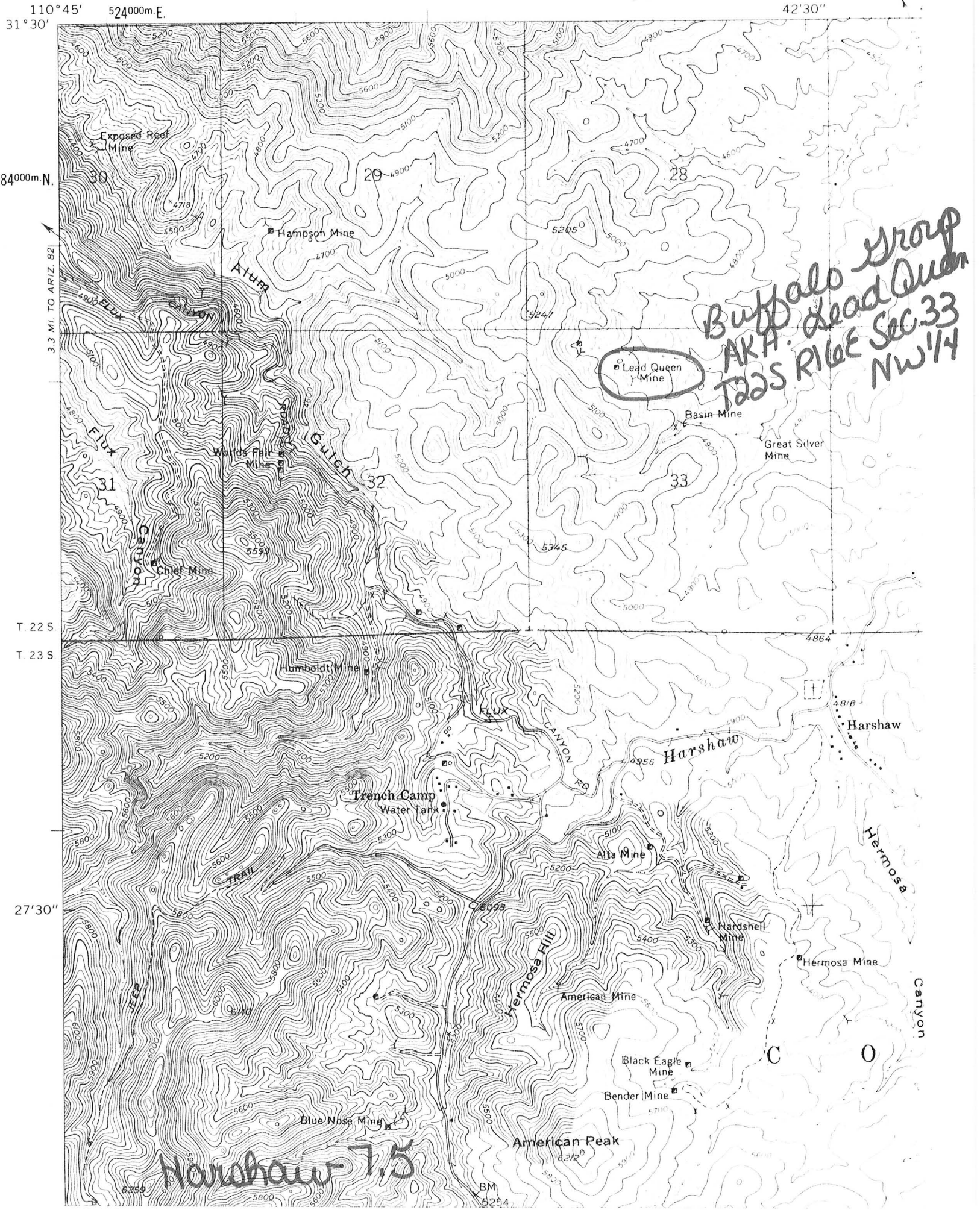
CURRENT STATUS: UNKNOWN

COMMODITY:
UNKNOWN

BIBLIOGRAPHY:
ADMMR BUFFALO MINE FILE

SONO

DEPARTMENT OF THE INTERIOR
GEOLOGICAL SURVEY



110°45' 31°30'

84000m N

3.3 MI. TO ARIZ. 82

T. 22 S
T. 23 S

27'30"

524000m E

42'30"

*Buffalo group
AKA Lead Queen
T22S R16E Sec 33
NW 1/4*

Harshaw 7.5

Exposed Reef Mine

Hampson Mine

Lead Queen Mine

Basin Mine

Great Silver Mine

Woods Park Mine

Chief Mine

Humboldt Mine

Trench Camp
Water Tank

Alta Mine

Hardshell Mine

Hermosa Mine

American Mine

Black Eagle Mine

Bender Mine

Blue Nose Mine

American Peak

FLUX CANYON

FLUX CANYON

FLUX CANYON

TRAIL

TRAIL

TRAIL

TRAIL

Atum

Guich

Harshaw

Hermosa Hill

Hermosa

Canyon

BM 5254

BUFFALO GROUP

9/84

SANTA CRUZ COUNTY
HARSHAW DISTRICT
T22S R16E Sec. 33 NW $\frac{1}{4}$

AKA: Wieland Group Claims, Golden Rose, Lead Queen, Jefferson Group, Mono Mine

MILS Santa Cruz Index #19B

USGS Bull. 582, p. 276-277

ABM Bull. 191, p. 57

USGS PP 658-E

Harshaw 7.5 (included in file)

* GENERAL REFERENCES

- REFERENCE 1 F1 < ABG-MT-USBM FILE >
- REFERENCE 2 F2 < ABG-MT CLIPPINGS FILE; GOLDEN ROSE GROUP, MONO MINE >
- REFERENCE 3 F3 < SCHRADER FRANK C. 1915, MINERAL DEPOSITS OF THE SANTA RITA AND PATAGONIA MOUNTAINS, ARIZONA; USGS BULLETIN 582, p. 276-277 >
- REFERENCE 4 F4 < SIMONS FRANKS 1974 GEOLOGIC MAP AND SECTIONS OF THE NOGALES AND LOCHIEL QUADRANGLES, SANTA CRUZ COUNTY, ARIZONA; USGS MAP I-762 (1:48000) >
- C43 < 9.2% Fe, 2% Zn >
- L110 < AUGUST BRODINE J.W. WILSON; PRODUCED INTERMITTENTLY DURING EARLY-MID 1900'S >
 M110 < FT WIDE, AND IS 300 FT LONG > → GEORGE A. EDWARD, K.H. HOWE, QUARTA AND SOTO, R.H. ROWE
- N70 < VOLCANICS OF RED MOUNTAIN >
- N85 < ORE DEPOSITS CONTAIN GOLD, SILVER, LEAD, AND COPPER MINERALS IN A CRUDELY BANDED GANGUE OF QUARTZ AND ALTERED ROCK WHICH IS MORE OR LESS POROUS AND HONEYCOMBED >
- F5 < KEITH STANTON B. 1975 INDEX OF MINING PROPERTIES IN SANTA CRUZ COUNTY, ARIZONA; ARIZONA BUREAU OF MINES BULLETIN 191, p. 57 >
- F6 < ABG-MT FILES, STANTON B. KEITH >
- F7 < SIMONS FRANKS 1972 MESOZOIC STRATIGRAPHY OF THE PATAGONIA MOUNTAINS AND ADJOINING AREAS, SANTA CRUZ COUNTY, ARIZONA; USGS PROFESSIONAL PAPER 658-E >
- F8 < MOORES RICHARD C. 1972 THE GEOLOGY AND ORE DEPOSITS OF A PORTION OF THE HARSHAW DISTRICT, SANTA CRUZ COUNTY, ARIZONA; M.S. THESIS, UNIVERSITY OF ARIZONA >
- F9 < USBM FILES, MONO MINE >

mined
10/13

U.S. CRIB-SITE FORM

RECORD IDENTIFICATION

RECORD NUMBER B10 < _____ > RECORD TYPE B20 < X, 1, M > DEPOSIT NUMBER B40 < _____ >
 REPORT DATE G1 < 82, 10, 3 > INFORMATION SOURCE B30 < 1, 2, _____ > FILE LINK IDENT. B50 < USBM-004023 0290 >
YR. MO.

REPORTER (SUPERVISOR) G2 < CALDER, SUSAN R. > (last, first, middle initial) (last, first, middle initial)

REPORTER AFFILIATION G5 < ABG-MT > SITE NAME A10 < BUFFALO GROUP >
 SYNONYMS A11 < WIELAND GROUP CLAIMS, GOLDEN ROSE, LEAD QUEEN, JEFFERSON GROUP, MONO MINE >

LOCATION

MINING DISTRICT/AREA A30 < HARSHAW DISTRICT >
 COUNTY A60 < SANTA CRUZ > STATE A50 < A.Z. > COUNTRY A40 < U.S. >
 PHYSIOGRAPHIC PROV A63 < 1, 2, 1, >
 DRAINAGE AREA A62 < 1, 5, 0, 5, 0, 3, 0, 1, 1, > LOWER COLORADO LAND STATUS A64 < 4, 1, 1, 1, 1, 1, 1, 9, 7, 9, 1, >
 QUADRANGLE NAME A90 < LOCHIEL > (1, 1, 9, 5, 8, 1) QUADRANGLE SCALE A100 < 62500 >
 SECOND QUAD NAME A92 < HARSHAW > (1, 1, 9, 4, 8, 1) SECOND QUAD SCALE A91 < 24000 >
 ELEVATION A107 < 4875 FT >

UTM ACCURACY GEODETIC
 NORTHING A120 < 3483050 > ACCURATE (ACC) (circle) LATITUDE A70 < 31.29.01 N >
 EASTING A130 < 526675 > ESTIMATED EST < _____ > LONGITUDE A80 < 111.0.43.09 W >
 ZONE NUMBER A110 < 1, 1, 2 >

CADASTRAL
 TOWNSHIP(S) A77 < 0, 2, 2, 5, 1, 1, > RANGE(S) A78 < 0, 1, 6, E, 1, 1, >
 SECTION(S) A79 < 33 > 32
 SECTION FRACTION(S) A76 < NW, 33; CENTER OF N2 OF S2, 32 >
 MERIDIAN(S) A81 < GILA AND SALT RIVER >

POSITION FROM NEAREST PROMINENT LOCALITY A82 < 1.5 MILES NW OF HARSHAW >
 LOCATION COMMENTS A83 < LOCATED ON RIDGE BETWEEN HARSHAW AND ALUM CREEKS; 1/4 MILE TO NW OF BASIN MINE; GOLDEN ROSE MINE IS WESTERN EXTENSION OF BUFFALO GROUP >

* ESSENTIAL INFORMATION
 * ESSENTIAL SOMETIMES OR HIGHLY RECOMMENDED

