



CONTACT INFORMATION

Mining Records Curator
Arizona Geological Survey
1520 West Adams St.
Phoenix, AZ 85007
602-771-1601
<http://www.azgs.az.gov>
inquiries@azgs.az.gov

The following file is part of the

Arizona Department of Mines and Mineral Resources Mining Collection

ACCESS STATEMENT

These digitized collections are accessible for purposes of education and research. We have indicated what we know about copyright and rights of privacy, publicity, or trademark. Due to the nature of archival collections, we are not always able to identify this information. We are eager to hear from any rights owners, so that we may obtain accurate information. Upon request, we will remove material from public view while we address a rights issue.

CONSTRAINTS STATEMENT

The Arizona Geological Survey does not claim to control all rights for all materials in its collection. These rights include, but are not limited to: copyright, privacy rights, and cultural protection rights. The User hereby assumes all responsibility for obtaining any rights to use the material in excess of "fair use."

The Survey makes no intellectual property claims to the products created by individual authors in the manuscript collections, except when the author deeded those rights to the Survey or when those authors were employed by the State of Arizona and created intellectual products as a function of their official duties. The Survey does maintain property rights to the physical and digital representations of the works.

QUALITY STATEMENT

The Arizona Geological Survey is not responsible for the accuracy of the records, information, or opinions that may be contained in the files. The Survey collects, catalogs, and archives data on mineral properties regardless of its views of the veracity or accuracy of those data.

PRINTED: 12/11/2002

ARIZONA DEPARTMENT OF MINES AND MINERAL RESOURCES AZMILS DATA

PRIMARY NAME: BROWN TRAVERTINE DEPOSIT

ALTERNATE NAMES:

COCONINO COUNTY MILS NUMBER: 508

LOCATION: TOWNSHIP 19 N RANGE 10 E SECTION 25 QUARTER NE
LATITUDE: N 35DEG 00MIN 00SEC LONGITUDE: W 111DEG 17MIN 00SEC
TOPO MAP NAME: ELLIOTT CANYON - 7.5 MIN

CURRENT STATUS: UNKNOWN

COMMODITY:

STONE TRAVERTINE
CALCIUM TRAVERTINE

BIBLIOGRAPHY:

ADMMR BROWN TRAVERTINE DEPOSIT FILE

02/27/87

ARIZONA DEPARTMENT OF MINES AND MINERAL RESOURCES FILE DATA

PRIMARY NAME: BROWN TRAVERTINE DEPOSIT

ALTERNATE NAMES:

COCONINO COUNTY MILS NUMBER: 508

LOCATION: TOWNSHIP 19 N RANGE 10 E SECTION 25 QUARTER NE
LATITUDE: N 35DEG 00MIN 00SEC LONGITUDE: W 111DEG 17MIN 00SEC
TOPO MAP NAME: ELLIOTT CANYON 7.5 MIN

CURRENT STATUS: UNKNOWN

COMMODITY:
STONE TRAVERTINE

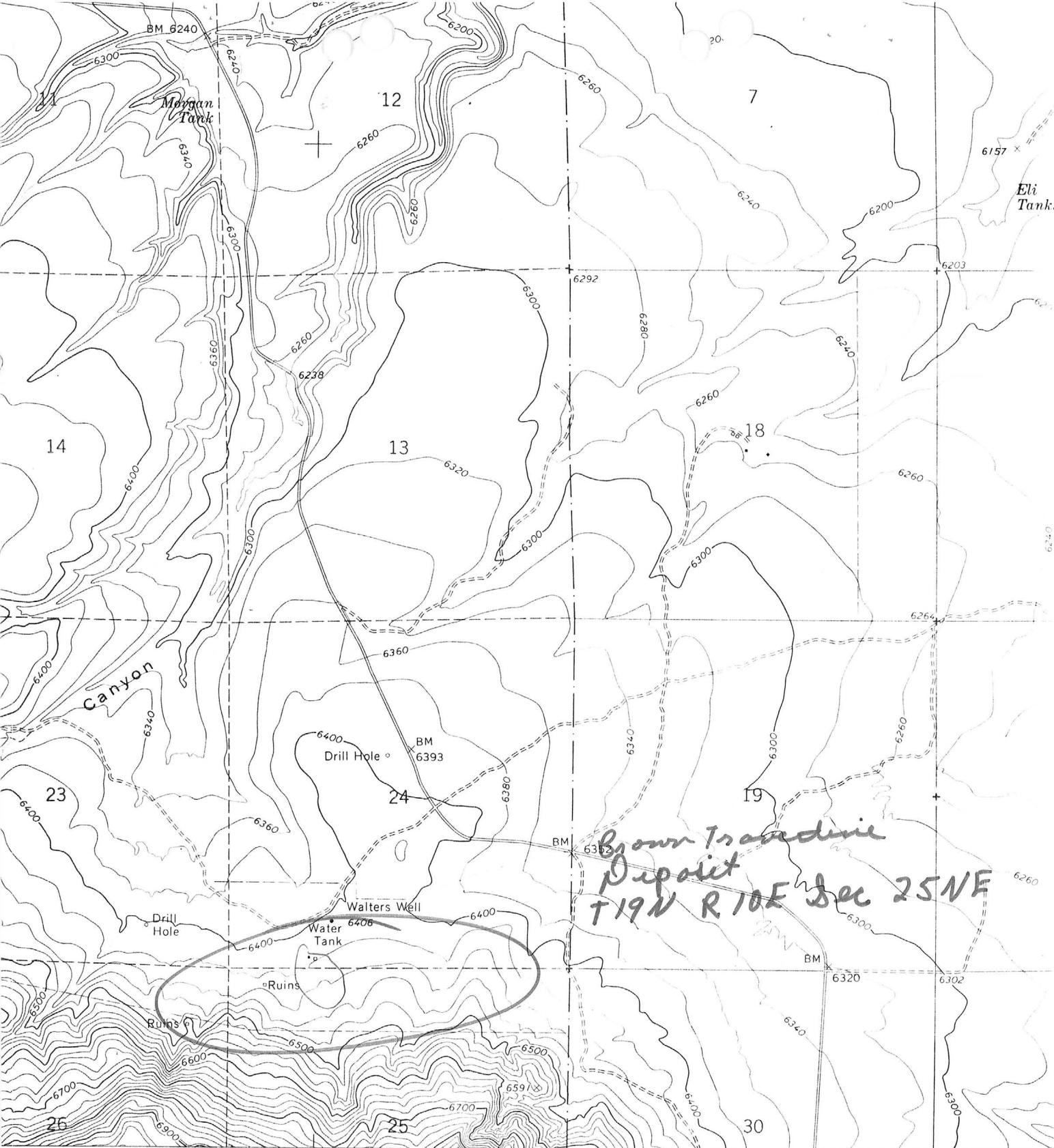
BIBLIOGRAPHY:
ADMMR BROWN TRAVERTINE DEPOSIT FILE

BROWN TRAVERTINE DEPOSIT

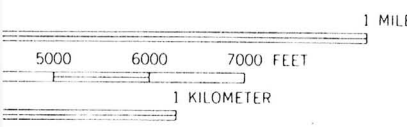
COCONINO COUNTY

NJN WR 10/19/84: Jimmy Robinson, (c) visited to discuss beryl prospecting. Samples he brought in included cutting quality specimens of travertine which he was encouraged to commercially pursue. His general description of the travertine occurrence matched that in the USBM literature called Brown Travertine Deposit near Flagstaff, Coconino County.

NJN WR 2/1/85: Jim Robinson (c) of Concho visited and provided a location for the previously reported Brown Travertine Deposit (c). It is located just south of Walters Cabin in T19N R10E Sec 25 NE $\frac{1}{4}$, Coconino County (Elliot Canyon 7.5). There are undoubtedly other occurrences in this area, for example Foster Claims (f) is nearby even though we don't have its exact location.



472 473 17'30" 474 R. 10 E. R. 11 E. 475 476000m E. INTERIOR—GEOLOGICAL SURVEY, WASHINGTON, D. C. — 197



ROAD CLASSIFICATION
Light-duty ————— Unimproved dirt ————



QUADRANGLE LOCATION

ELLIOTT CANYON, *az*
N3500—W11115/7.