



CONTACT INFORMATION

Mining Records Curator
Arizona Geological Survey
1520 West Adams St.
Phoenix, AZ 85007
602-771-1601
<http://www.azgs.az.gov>
inquiries@azgs.az.gov

The following file is part of the

Arizona Department of Mines and Mineral Resources Mining Collection

ACCESS STATEMENT

These digitized collections are accessible for purposes of education and research. We have indicated what we know about copyright and rights of privacy, publicity, or trademark. Due to the nature of archival collections, we are not always able to identify this information. We are eager to hear from any rights owners, so that we may obtain accurate information. Upon request, we will remove material from public view while we address a rights issue.

CONSTRAINTS STATEMENT

The Arizona Geological Survey does not claim to control all rights for all materials in its collection. These rights include, but are not limited to: copyright, privacy rights, and cultural protection rights. The User hereby assumes all responsibility for obtaining any rights to use the material in excess of "fair use."

The Survey makes no intellectual property claims to the products created by individual authors in the manuscript collections, except when the author deeded those rights to the Survey or when those authors were employed by the State of Arizona and created intellectual products as a function of their official duties. The Survey does maintain property rights to the physical and digital representations of the works.

QUALITY STATEMENT

The Arizona Geological Survey is not responsible for the accuracy of the records, information, or opinions that may be contained in the files. The Survey collects, catalogs, and archives data on mineral properties regardless of its views of the veracity or accuracy of those data.

PRINTED: 12/11/2002

ARIZONA DEPARTMENT OF MINES AND MINERAL RESOURCES AZMILS DATA

PRIMARY NAME: BOWER PUMICE

ALTERNATE NAMES:

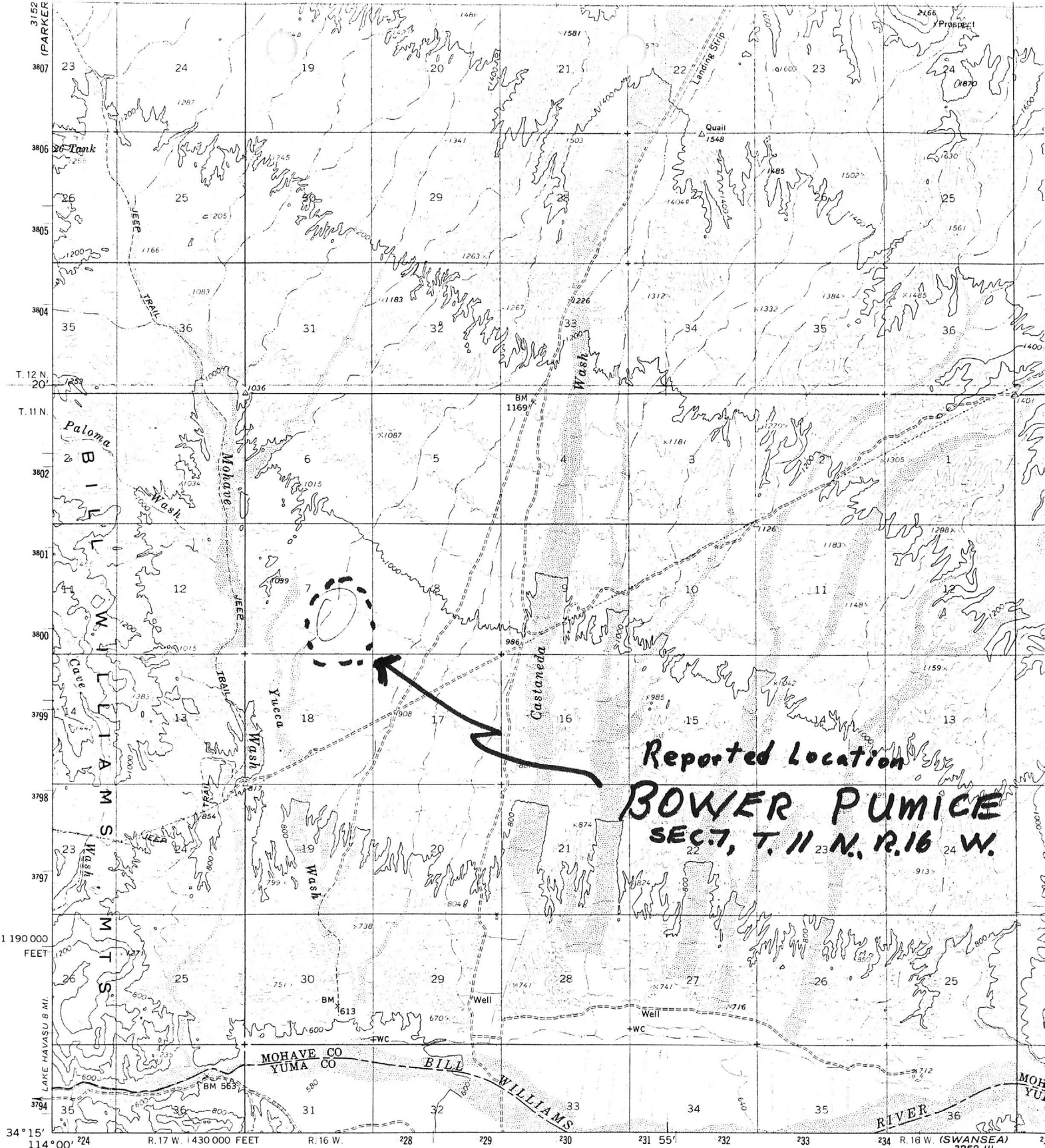
MOHAVE COUNTY MILS NUMBER: 782

LOCATION: TOWNSHIP 11 N RANGE 16 W SECTION 8 QUARTER
LATITUDE: N 34DEG 18MIN 25SEC LONGITUDE: W 113DEG 57MIN 40SEC
TOPO MAP NAME: CASTANEDA HILLS - 15 MIN

CURRENT STATUS: RAW PROSPECT

COMMODITY:
PUMICE

BIBLIOGRAPHY:
ADMMR BOWER PUMICE FILE

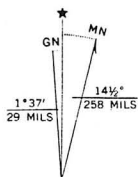


Mapped, edited, and published by the Geological Survey

Control by USGS and USC&GS

Topography by photogrammetric methods from aerial photographs taken 1964. Field checked 1966

Polyconic projection. 1927 North American datum
 10,000-foot grid based on Arizona coordinate system, west zone 12, shown in blue



UTM GRID AND 1966 MAGNETIC NORTH DECLINATION AT CENTER OF SHEET

(ARIZ)

CASTANEDA HILLS

THIS MAP COMPLIES WITH NATIONAL MAP ACCORDANCE ACT FOR SALE BY U.S. GEOLOGICAL SURVEY, DENVER, COLORADO
 A FOLDER DESCRIBING TOPOGRAPHIC MAPS AND SYMBOLS

K. PEAK
3152 II

ARIZONA DEPARTMENT OF MINES AND MINERAL RESOURCES

VERBAL INFORMATION SUMMARY

1. Information from: William P. Bower
Address: P. O. Box 493, Bouse, AZ 85235
2. Phone: Message: 669-2121 (Tribal land fill at Parker)
3. Mine: Bower Pumice
4. ADMMR Mine File: To be made *Bower Pumice*
5. County: Mohave
6. MILS Number: To be assigned *782*
7. District: (mining) or (mineral)
8. Township: T11N Range: R16W Sec(s): SE, Sec. 7
9. USGS Topographic Map: Castaneda Hills 15'
10. Location (descriptive): Best access is west from Castaneda Wash Road. (Mohave Wash Road is in sandwash)

11. Number of Claims: Patented
Unpatented
12. Owner(s): (if different from above)

13. Address:
14. Operating Company:
15. Pertinent People and/or Firm:

16. Commodities: Pumice - "floats on water"
17. Operational Status:
18. Summary of information received, comments, etc.:

Mr. Bower was in and mentioned numerous of his activities in a 2 township area. He promised to bring back copies of completed Mine Owners Report Forms for his various claim areas.

He specifically mentioned pumice in the above section and promised to send in a sample.

Date: June 30, 1990

Ken A. Phillips

