



CONTACT INFORMATION

Mining Records Curator
Arizona Geological Survey
1520 West Adams St.
Phoenix, AZ 85007
602-771-1601
<http://www.azgs.az.gov>
inquiries@azgs.az.gov

The following file is part of the

Arizona Department of Mines and Mineral Resources Mining Collection

ACCESS STATEMENT

These digitized collections are accessible for purposes of education and research. We have indicated what we know about copyright and rights of privacy, publicity, or trademark. Due to the nature of archival collections, we are not always able to identify this information. We are eager to hear from any rights owners, so that we may obtain accurate information. Upon request, we will remove material from public view while we address a rights issue.

CONSTRAINTS STATEMENT

The Arizona Geological Survey does not claim to control all rights for all materials in its collection. These rights include, but are not limited to: copyright, privacy rights, and cultural protection rights. The User hereby assumes all responsibility for obtaining any rights to use the material in excess of "fair use."

The Survey makes no intellectual property claims to the products created by individual authors in the manuscript collections, except when the author deeded those rights to the Survey or when those authors were employed by the State of Arizona and created intellectual products as a function of their official duties. The Survey does maintain property rights to the physical and digital representations of the works.

QUALITY STATEMENT

The Arizona Geological Survey is not responsible for the accuracy of the records, information, or opinions that may be contained in the files. The Survey collects, catalogs, and archives data on mineral properties regardless of its views of the veracity or accuracy of those data.

PRINTED: 12/11/2002

ARIZONA DEPARTMENT OF MINES AND MINERAL RESOURCES AZMILS DATA

PRIMARY NAME: BOSLEY GOLD

ALTERNATE NAMES:

MARICOPA COUNTY MILS NUMBER: 662

LOCATION: TOWNSHIP 3 S RANGE 1 W SECTION 12 QUARTER C
LATITUDE: N 33DEG 10MIN 55SEC LONGITUDE: W 112DEG 18MIN 50SEC
TOPO MAP NAME: MOBILE - 15 MIN

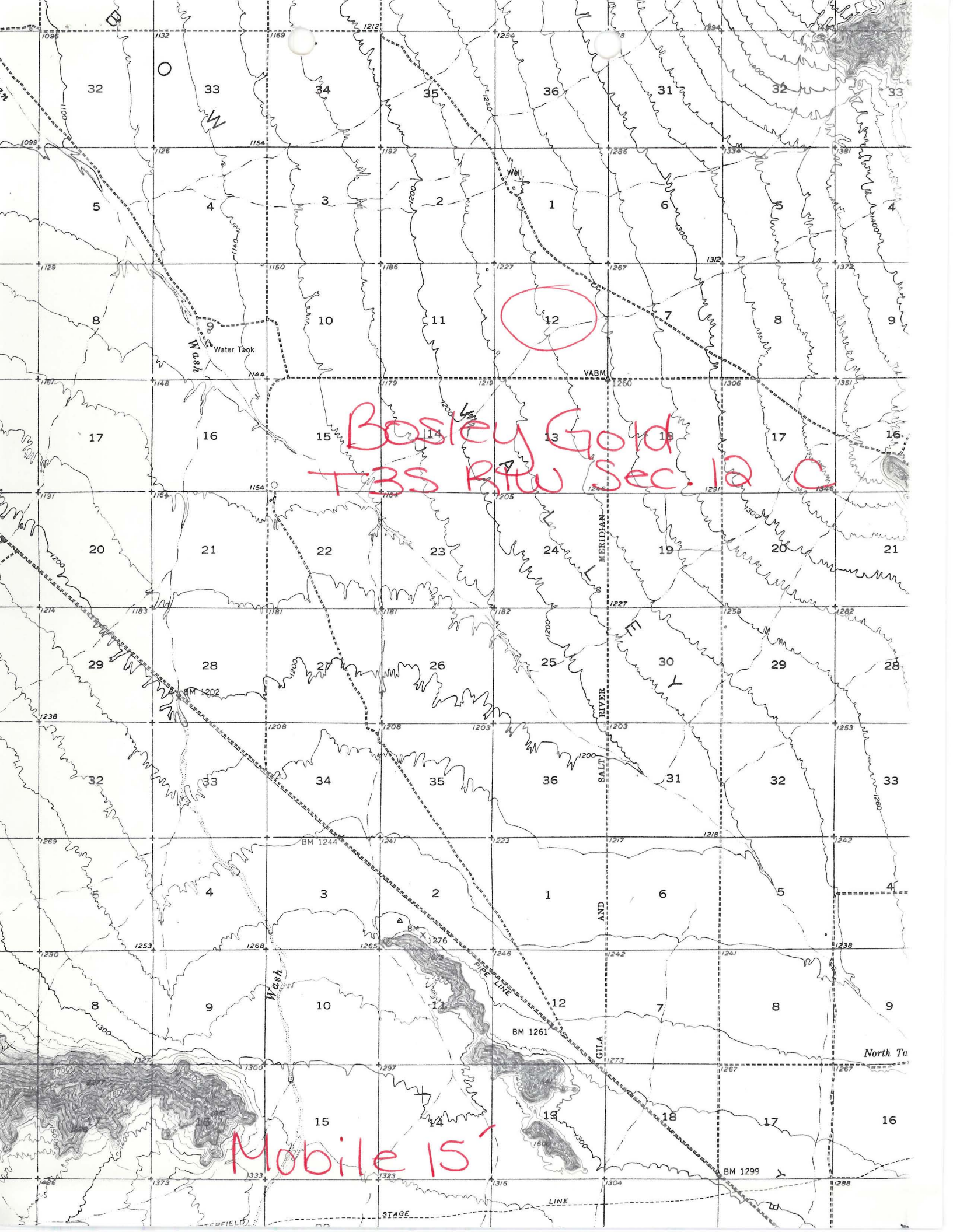
CURRENT STATUS: RAW PROSPECT

COMMODITY:

GOLD
SILVER
COPPER

BIBLIOGRAPHY:

ADMMR BOSLEY GOLD MINE FILE
KRASON, JAN, ET.AL. "GEOLGOY, ENERGY, &
MINERAL RESOURCES ASSESSMENT IN THE MARICOPA
AREA", 1982, P. 46



Bosley Gold
TBS PATW Sec. 12 C

Mobile 15'

DEPARTMENT OF MINERAL RESOURCES
STATE OF ARIZONA
FIELD ENGINEERS REPORT

FILED
JUN 17 1963

Mine BOSLEY GOLD PROSPECT

Date 5/29/63

District SIERRA ESTRELLA MTNS MARICOPA CO.

Engineer LEWIS A. SMITH

Subject: INTERVIEW WITH HOWARD V. BOSLEY

CLAIMS: 2 claims (unpatented).

LOCATION: Approx. S-12, T3S, R1W, (NW portion of the Sierra Estrella Mtns).

Owner: Howard V. Bosley, Sedona, Arizona

WORK: Location work on a vein.

MINERALS: Gold, silver copper

Geology: The gold is in yellow limonite in a quartz vein that cuts Precambrian schist. The vein varies in width mostly averages around 1-foot, trends NW-SE, and dips steeply.

Samples ran about 2 percent copper, \$0.35 in Au and 1.40 oz silver per ton. Local pockets run up to \$40.00 in gold per ton.