



CONTACT INFORMATION

Mining Records Curator
Arizona Geological Survey
1520 West Adams St.
Phoenix, AZ 85007
602-771-1601
<http://www.azgs.az.gov>
inquiries@azgs.az.gov

The following file is part of the

Arizona Department of Mines and Mineral Resources Mining Collection

ACCESS STATEMENT

These digitized collections are accessible for purposes of education and research. We have indicated what we know about copyright and rights of privacy, publicity, or trademark. Due to the nature of archival collections, we are not always able to identify this information. We are eager to hear from any rights owners, so that we may obtain accurate information. Upon request, we will remove material from public view while we address a rights issue.

CONSTRAINTS STATEMENT

The Arizona Geological Survey does not claim to control all rights for all materials in its collection. These rights include, but are not limited to: copyright, privacy rights, and cultural protection rights. The User hereby assumes all responsibility for obtaining any rights to use the material in excess of "fair use."

The Survey makes no intellectual property claims to the products created by individual authors in the manuscript collections, except when the author deeded those rights to the Survey or when those authors were employed by the State of Arizona and created intellectual products as a function of their official duties. The Survey does maintain property rights to the physical and digital representations of the works.

QUALITY STATEMENT

The Arizona Geological Survey is not responsible for the accuracy of the records, information, or opinions that may be contained in the files. The Survey collects, catalogs, and archives data on mineral properties regardless of its views of the veracity or accuracy of those data.

PRINTED: 12/11/2002

ARIZONA DEPARTMENT OF MINES AND MINERAL RESOURCES AZMILS DATA

PRIMARY NAME: BOOTZ 1-16

ALTERNATE NAMES:

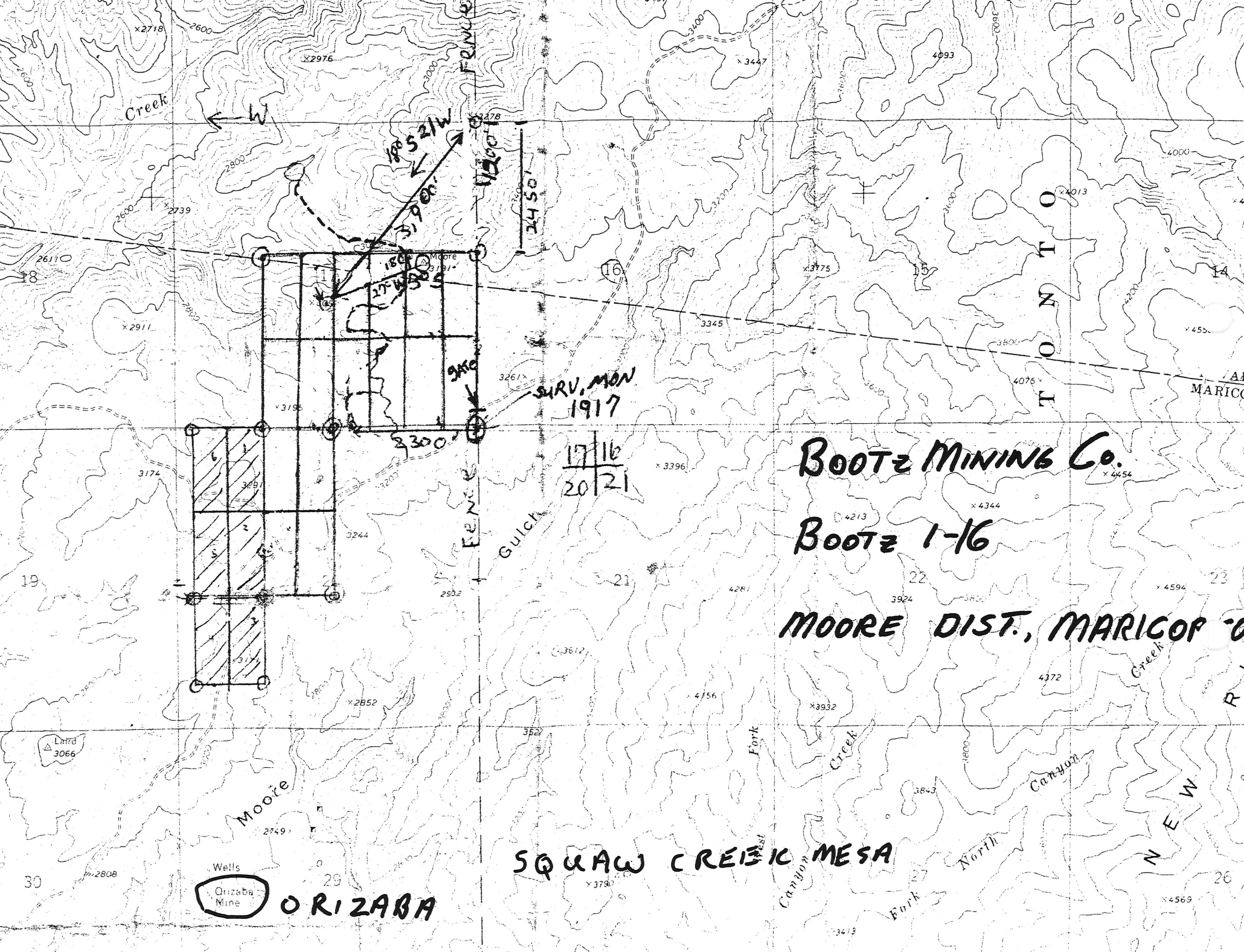
MARICOPA COUNTY MILS NUMBER: 708

LOCATION: TOWNSHIP 8 N RANGE 3 E SECTION 17 QUARTER SE
LATITUDE: N 34DEG 02MIN 04SEC LONGITUDE: W 112DEG 04MIN 10SEC
TOPO MAP NAME: SQUAW CREEK MESA - 7.5 MIN

CURRENT STATUS: UNKNOWN

COMMODITY:
COPPER
ZINC
SILVER

BIBLIOGRAPHY:
ADMMR BOOTZ 1-6 FILE



SURV. MON
1917

17	16
20	21

BOOTZ MINING Co.

Boote 1-16

MOORE DIST., MARICOP CO.

SQUAW CREEK MESA

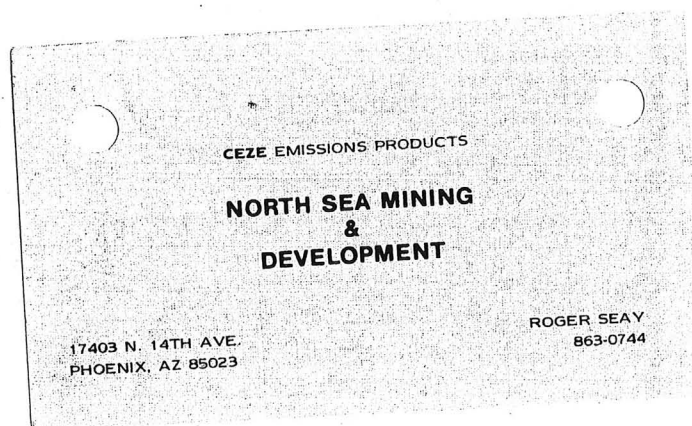
Wells
Orizaba Mine

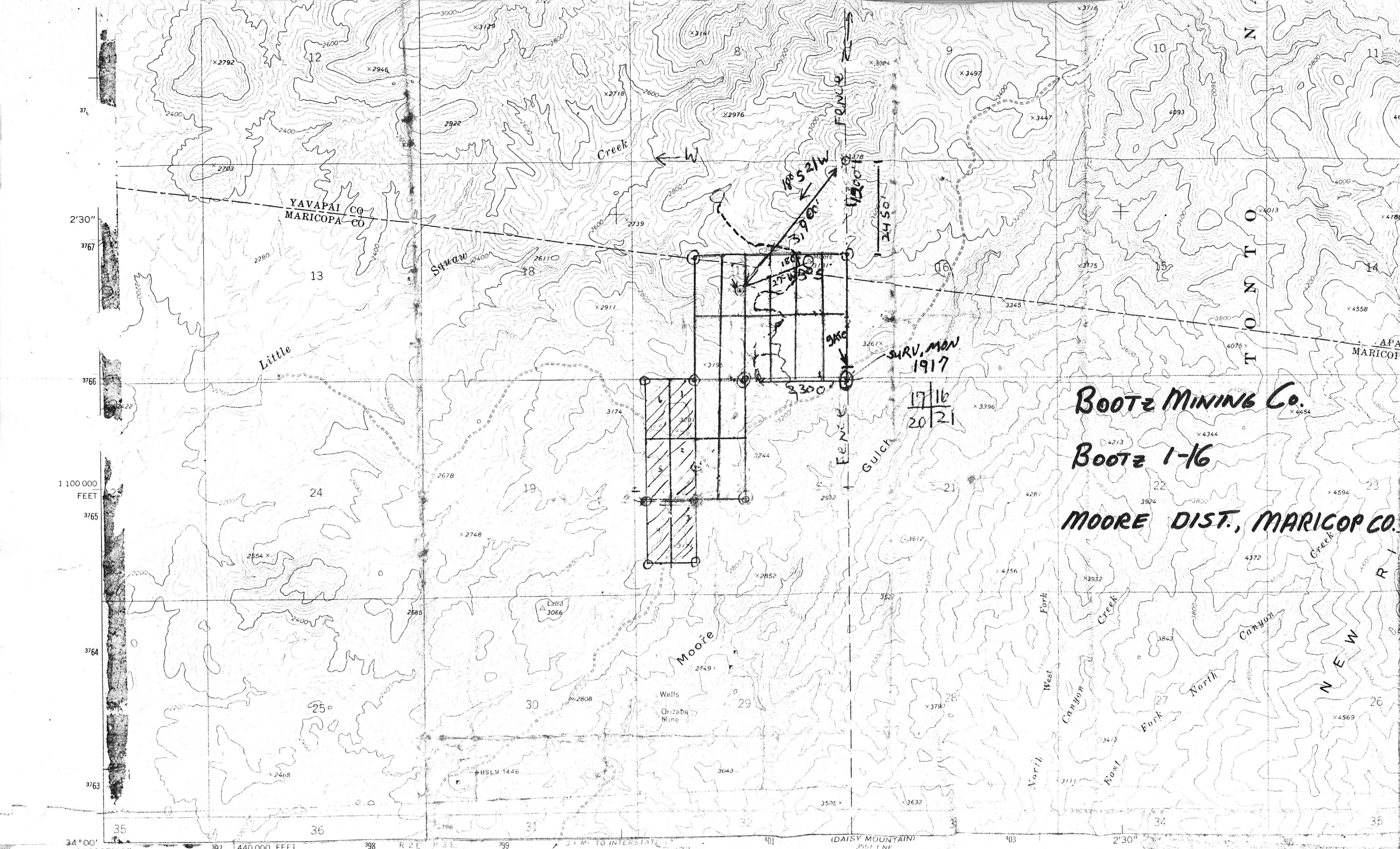
ORIZABA

BOOTZ 1-6

MARICOPA COUNTY

KAP WR 5/4/84: Roger Seay (c) reported he has located the Bootz 1-6 claims in the Moore District, Maricopa County, Sec 17, T8N R3E. AMC #215314-19. Data related by Mr. Seay over the phone on the results of a spectrographic analysis indicate anomolous amounts of copper, zinc and silver. The need for the most basic sampling was emphasized. Map for file was provided.





Mapped, edited, and published by the Geological Survey

Control by USGS and USC&GS

Topography by photogrammetric methods from aerial

GN

MA

1500
1550
1600

Primary h
hard surfa
Second

CEZE EMISSIONS PRODUCTS

**NORTH SEA MINING
&
DEVELOPMENT**

17403 N. 14TH AVE.
PHOENIX, AZ 85023

ROGER SEAY
863-0744