



## **CONTACT INFORMATION**

Mining Records Curator  
Arizona Geological Survey  
1520 West Adams St.  
Phoenix, AZ 85007  
602-771-1601  
<http://www.azgs.az.gov>  
[inquiries@azgs.az.gov](mailto:inquiries@azgs.az.gov)

The following file is part of the

Arizona Department of Mines and Mineral Resources Mining Collection

## **ACCESS STATEMENT**

These digitized collections are accessible for purposes of education and research. We have indicated what we know about copyright and rights of privacy, publicity, or trademark. Due to the nature of archival collections, we are not always able to identify this information. We are eager to hear from any rights owners, so that we may obtain accurate information. Upon request, we will remove material from public view while we address a rights issue.

## **CONSTRAINTS STATEMENT**

The Arizona Geological Survey does not claim to control all rights for all materials in its collection. These rights include, but are not limited to: copyright, privacy rights, and cultural protection rights. The User hereby assumes all responsibility for obtaining any rights to use the material in excess of "fair use."

The Survey makes no intellectual property claims to the products created by individual authors in the manuscript collections, except when the author deeded those rights to the Survey or when those authors were employed by the State of Arizona and created intellectual products as a function of their official duties. The Survey does maintain property rights to the physical and digital representations of the works.

## **QUALITY STATEMENT**

The Arizona Geological Survey is not responsible for the accuracy of the records, information, or opinions that may be contained in the files. The Survey collects, catalogs, and archives data on mineral properties regardless of its views of the veracity or accuracy of those data.

PRINTED: 12/11/2002

ARIZONA DEPARTMENT OF MINES AND MINERAL RESOURCES AZMILS DATA

PRIMARY NAME: BOBCAT

ALTERNATE NAMES:

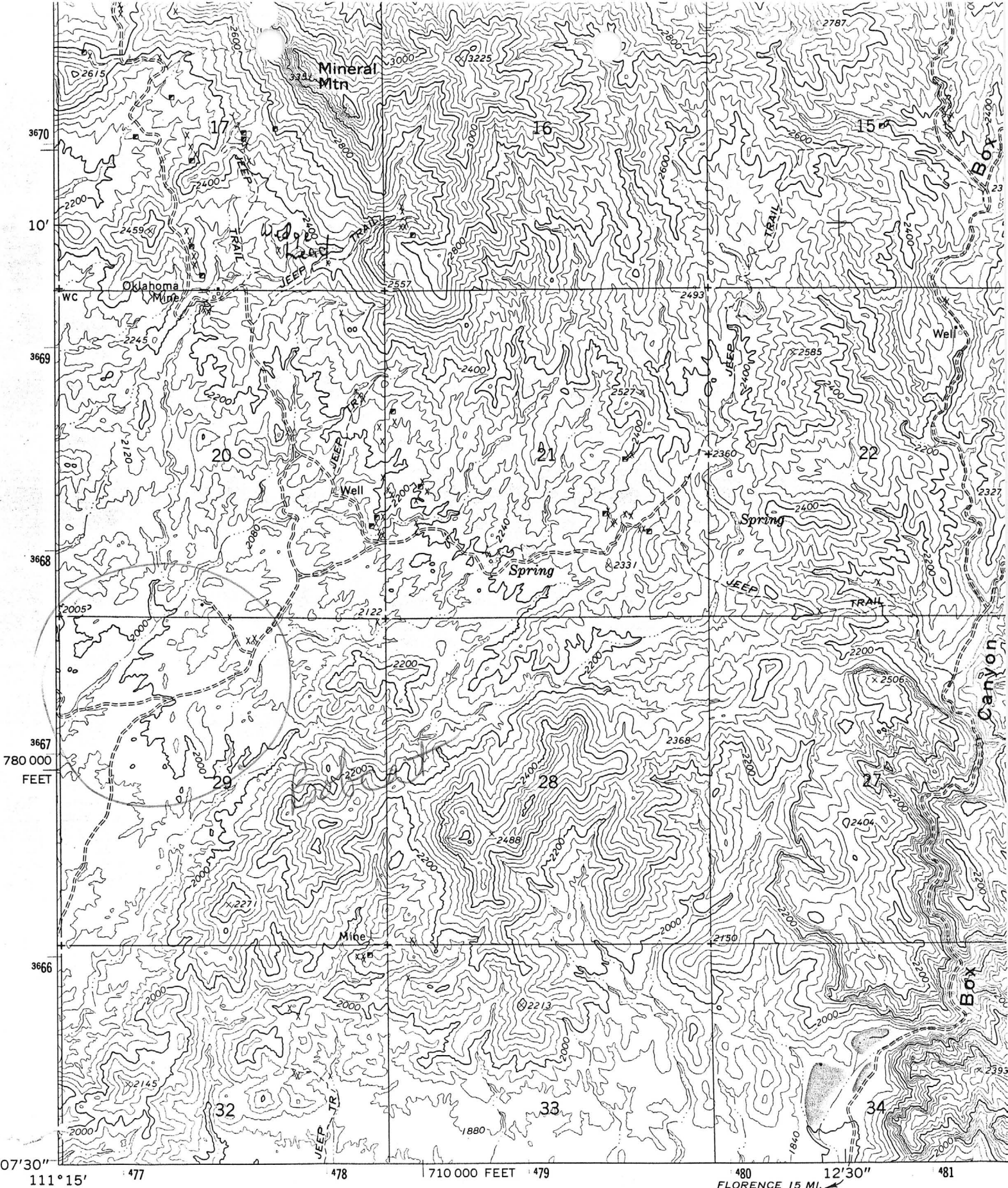
PINAL COUNTY MILS NUMBER: 219B

LOCATION: TOWNSHIP 3 S RANGE 11 E SECTION 29 QUARTER NE  
LATITUDE: N 33DEG 08MIN 57SEC LONGITUDE: W 111DEG 13MIN 58SEC  
TOPO MAP NAME: MINERAL MTN - 7.5 MIN

CURRENT STATUS: EXP PROSPECT

COMMODITY:  
COPPER OXIDE

BIBLIOGRAPHY:  
ADMMR BOBCAT FILE



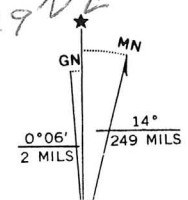
Mapped, edited, and published by the Geological Survey

Control by USGS and USC&GS

Topography by photogrammetric methods from aerial photographs taken 1962. Field checked 1964

Polyconic projection. 1927 North American datum  
 10,000-foot grid based on Arizona coordinate system, central zone  
 1000-meter Universal Transverse Mercator grid ticks, zone 12, shown in blue

*T35 R11E Dec 29 NE*



33°07'30"

111°15' 477 478 710 000 FEET 479 480 12'30" 481

FLORENCE 15 MI.

367  
780 000  
FEET

3670  
10'

3669  
3668

3666

BOBCAT

PINAL COUNTY

HM WR 1/30/88: Jim Sorrel, geophysicist, P O Box 5031, Tucson, AZ 85703 has located the Bobcat claims, formerly Mineral Mt #17 MILS #219B over an induced polarization anomaly. The response in near 50 feet depth, 300 ft wide by +500 feet long striking in a N20W direction. Copper carbonates and indigenous limonites are in proxmal outcrop.

-----