



CONTACT INFORMATION

Mining Records Curator
Arizona Geological Survey
1520 West Adams St.
Phoenix, AZ 85007
602-771-1601
<http://www.azgs.az.gov>
inquiries@azgs.az.gov

The following file is part of the

Arizona Department of Mines and Mineral Resources Mining Collection

ACCESS STATEMENT

These digitized collections are accessible for purposes of education and research. We have indicated what we know about copyright and rights of privacy, publicity, or trademark. Due to the nature of archival collections, we are not always able to identify this information. We are eager to hear from any rights owners, so that we may obtain accurate information. Upon request, we will remove material from public view while we address a rights issue.

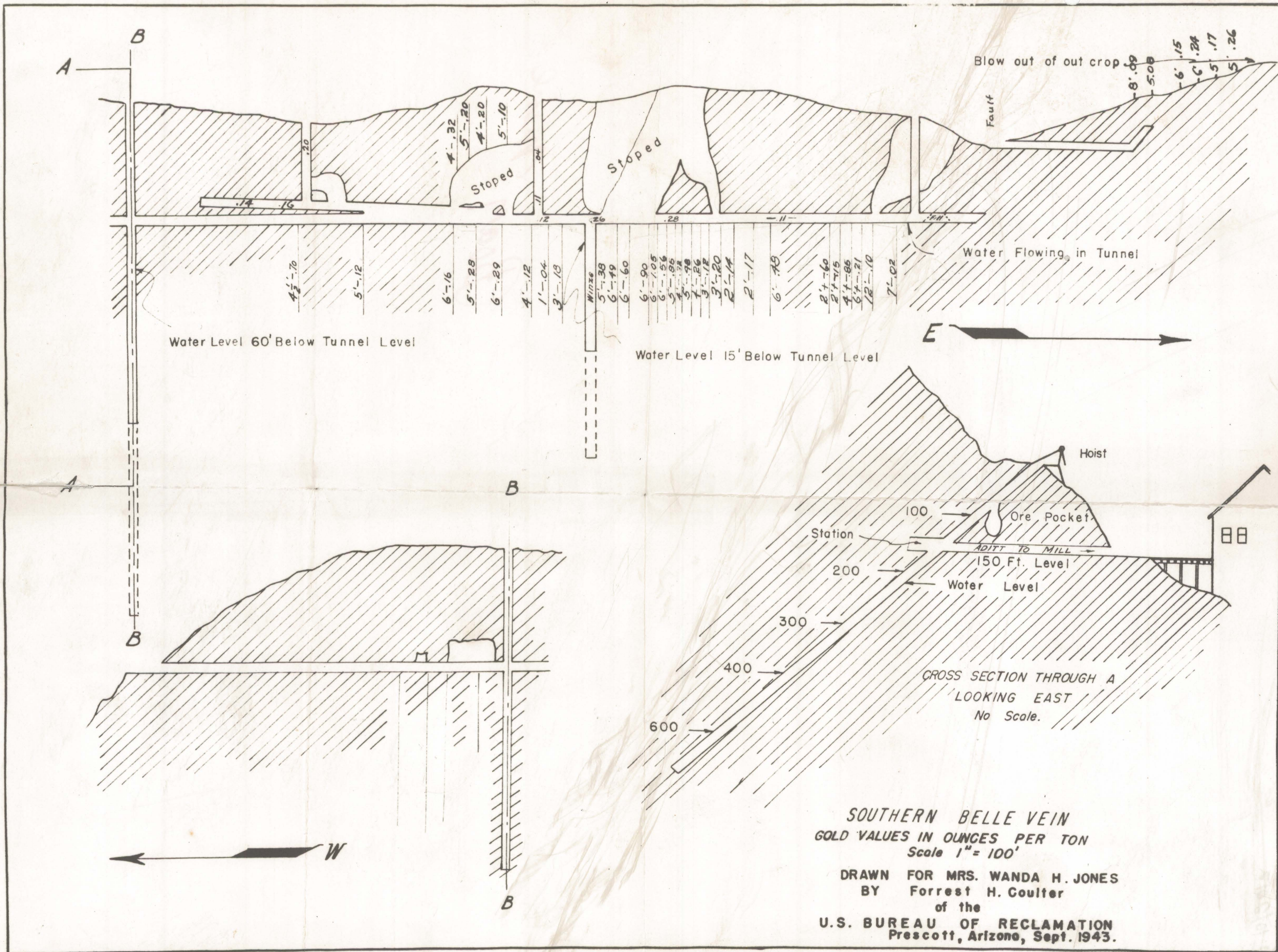
CONSTRAINTS STATEMENT

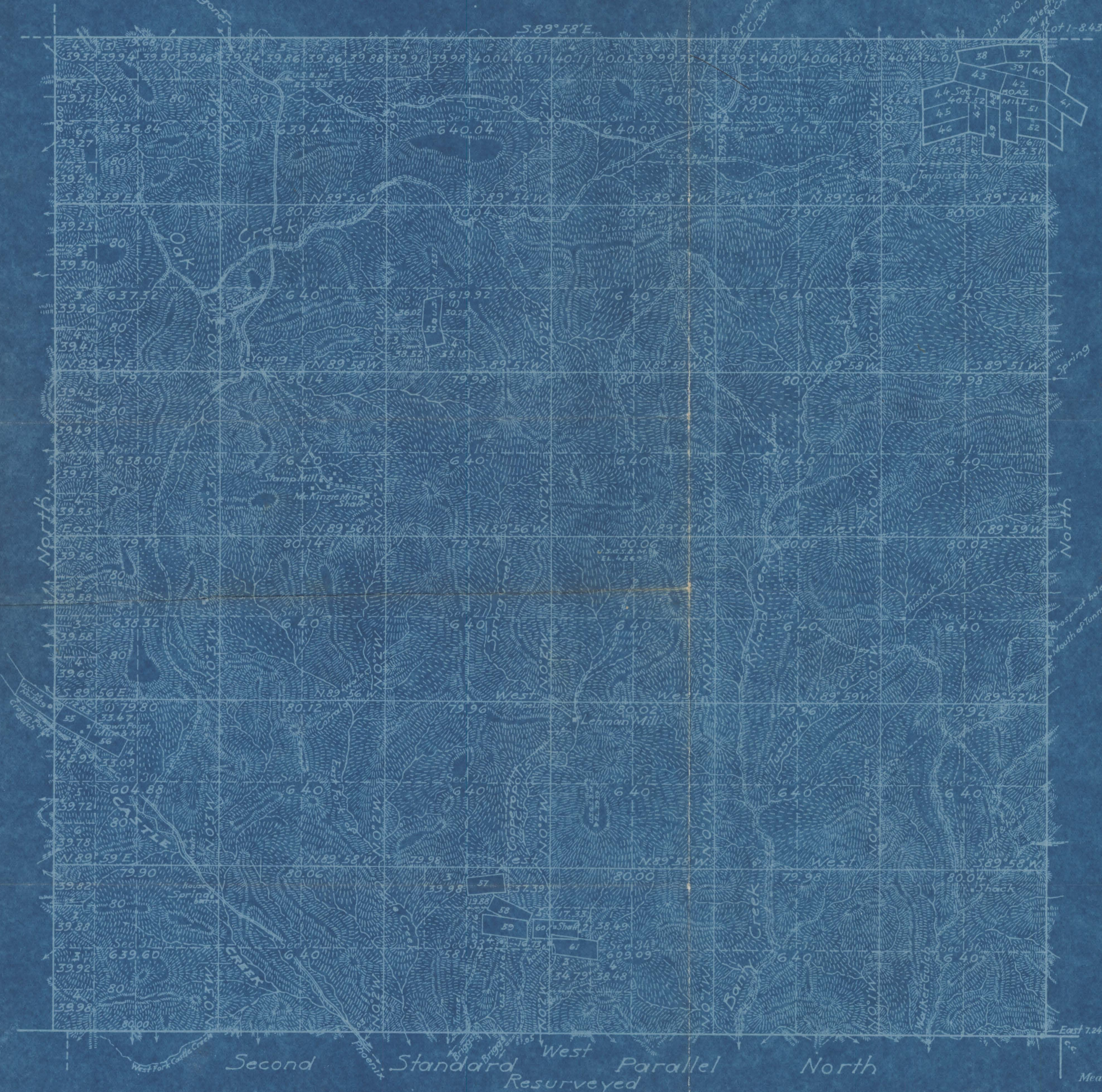
The Arizona Geological Survey does not claim to control all rights for all materials in its collection. These rights include, but are not limited to: copyright, privacy rights, and cultural protection rights. The User hereby assumes all responsibility for obtaining any rights to use the material in excess of "fair use."

The Survey makes no intellectual property claims to the products created by individual authors in the manuscript collections, except when the author deeded those rights to the Survey or when those authors were employed by the State of Arizona and created intellectual products as a function of their official duties. The Survey does maintain property rights to the physical and digital representations of the works.

QUALITY STATEMENT

The Arizona Geological Survey is not responsible for the accuracy of the records, information, or opinions that may be contained in the files. The Survey collects, catalogs, and archives data on mineral properties regardless of its views of the veracity or accuracy of those data.





Patented Mining Claims

No.	Name	Sur. No.	Area
37	Campview	1557A	16.63
38	Hilltop	"	18.31
39	Chicago	1665	9.60
40	Fort Worth	"	6.89
41	High Grade	1557A	.02
42	Beatrice	"	19.82
43	Little Annie	"	20.65
44	Compensation	"	17.
45	Cleveland	1676	19.84
46	Boston	"	19.84
47	Nil Desperandum	1557A	19.98
48	Nil Desperandum M.S.	1557B	4.84
49	Atlantic City	1675	15.81
50	Surprise	1557A	20.25
51	New York	1674	12.41
52	Seattle	"	12.32
53	Little Joker	1537	20.08
54	Silver King	1259	1.46
55	Yankee Boy	"	16.18
56	Yankee Girl	"	16.28
57	American	1199	15.
58	Wild Bird	1246	15.65
59	Melinda Jane	"	19.85
60	Mammoth	1200	19.39
61	Joker	1247	19.05

Areas in Acres	
Public Land	22650.31
Indian Reservation	
Indian Allotments	
Mineral Claims	378.57
Water Surface	
Total Area	23028.88

Latitude 34° 04' 04" N.
 Longitude 112° 24' 45" W.
 Scale 40 Chains to an inch
 Mean Magnetic Declination 15° 00' E.

Surveys Designated	By Whom Surveyed	Group		Amount of Surveys			When Surveyed	
		No.	Date	Mls.	chs.	fts.	Begin	Completed
North Bay	J. P. Davis, U.S.S.	61	Nov. 13, 1917	Complete			Mar. 19 - Apr. 3, 1919	
East	"	"	"	"			Feb. 26 - Apr. 2, "	
West	"	"	"	"			Mar. 6 - Mar. 19, "	
2nd Std. Par. N. Resur.	"	"	"	"			Feb. 26 - Mar. 6, "	
Subdivisions	"	"	"	"			Feb. 27 - Apr. 7, "	

The above map of Township No. 9 North Range No. 2 West of the Gila & Salt River Meridian, Arizona is strictly conformable to the field notes of the survey thereof on file in this office, which have been examined and approved
 U. S. Surveyor General's Office.
 Phoenix, Ariz, May 14, 1920.
Frank O. Frost
 Surveyor General.