



CONTACT INFORMATION

Mining Records Curator
Arizona Geological Survey
1520 West Adams St.
Phoenix, AZ 85007
602-771-1601
<http://www.azgs.az.gov>
inquiries@azgs.az.gov

The following file is part of the

Arizona Department of Mines and Mineral Resources Mining Collection

ACCESS STATEMENT

These digitized collections are accessible for purposes of education and research. We have indicated what we know about copyright and rights of privacy, publicity, or trademark. Due to the nature of archival collections, we are not always able to identify this information. We are eager to hear from any rights owners, so that we may obtain accurate information. Upon request, we will remove material from public view while we address a rights issue.

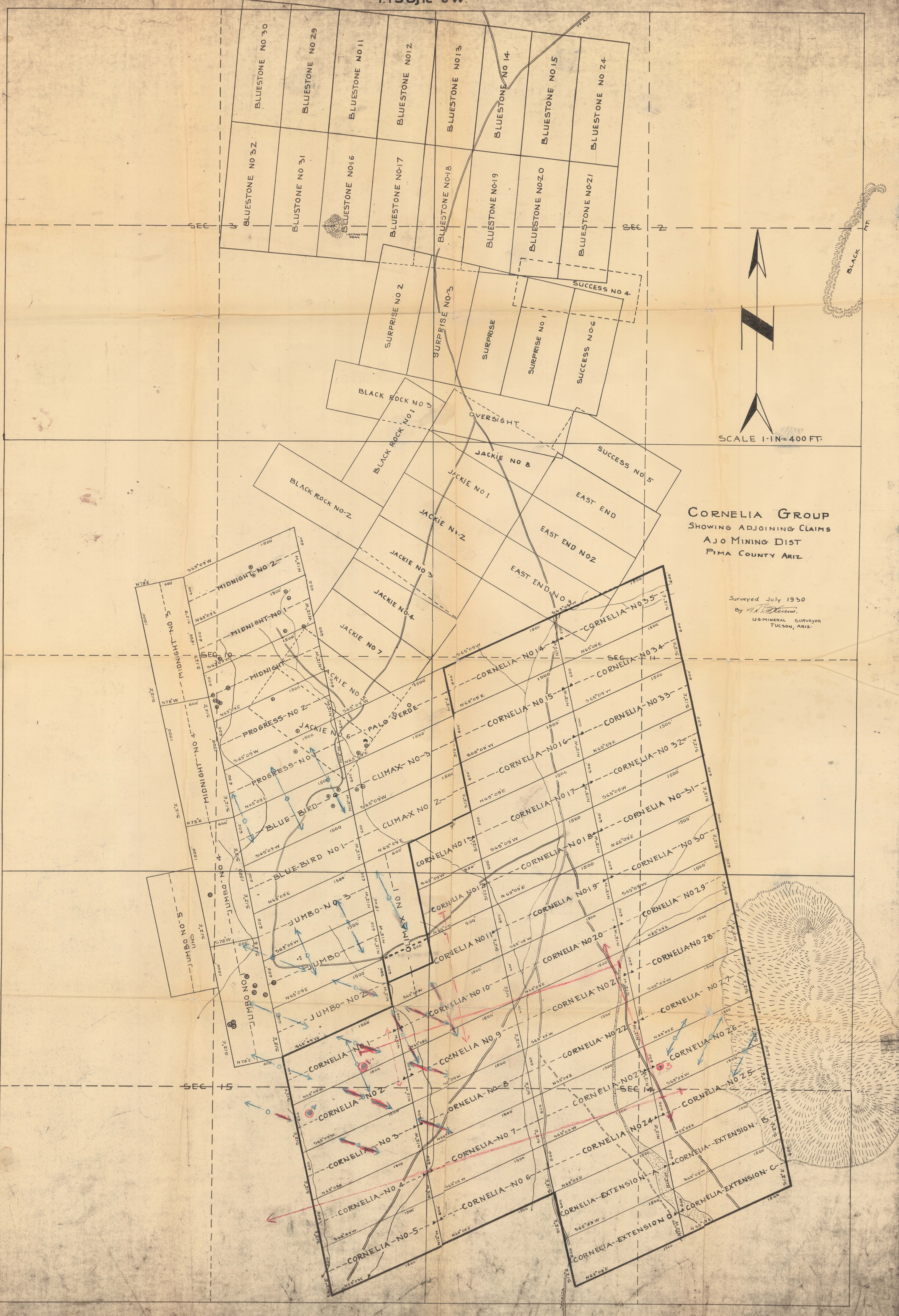
CONSTRAINTS STATEMENT

The Arizona Geological Survey does not claim to control all rights for all materials in its collection. These rights include, but are not limited to: copyright, privacy rights, and cultural protection rights. The User hereby assumes all responsibility for obtaining any rights to use the material in excess of "fair use."

The Survey makes no intellectual property claims to the products created by individual authors in the manuscript collections, except when the author deeded those rights to the Survey or when those authors were employed by the State of Arizona and created intellectual products as a function of their official duties. The Survey does maintain property rights to the physical and digital representations of the works.

QUALITY STATEMENT

The Arizona Geological Survey is not responsible for the accuracy of the records, information, or opinions that may be contained in the files. The Survey collects, catalogs, and archives data on mineral properties regardless of its views of the veracity or accuracy of those data.



CORNELIA GROUP
SHOWING ADJOINING CLAIMS
AJO MINING DIST
PIMA COUNTY ARIZ

Surveyed July 1930
By H. H. Brown,
U.S. MINERAL SURVEYOR
TUCSON, ARIZ.

T.13S,R.6W.

men
12 claims



CORNELIA GROUP
SHOWING ADJOINING CLAIMS
AJO MINING DIST
PIMA COUNTY ARIZ.

Surveyed July 1930
By *H. H. Brown*
U.S. MINERAL SURVEYOR
TUCSON, ARIZ.

SCALE 1"=400 FT.

NEW CORNELIA MINE 2½ MILES



SCALE: 1" = 600'

COPPER GIANT GROUP

AJO MINING DISTRICT

PIMA COUNTY ARIZONA

DRAWN BY
J.C. ETHELLS JR.

○ = LOCATION HOLES AND WORKINGS

— = ROADS

— = WASHES