



CONTACT INFORMATION

Mining Records Curator
Arizona Geological Survey
1520 West Adams St.
Phoenix, AZ 85007
602-771-1601
<http://www.azgs.az.gov>
inquiries@azgs.az.gov

The following file is part of the

Arizona Department of Mines and Mineral Resources Mining Collection

ACCESS STATEMENT

These digitized collections are accessible for purposes of education and research. We have indicated what we know about copyright and rights of privacy, publicity, or trademark. Due to the nature of archival collections, we are not always able to identify this information. We are eager to hear from any rights owners, so that we may obtain accurate information. Upon request, we will remove material from public view while we address a rights issue.

CONSTRAINTS STATEMENT

The Arizona Geological Survey does not claim to control all rights for all materials in its collection. These rights include, but are not limited to: copyright, privacy rights, and cultural protection rights. The User hereby assumes all responsibility for obtaining any rights to use the material in excess of "fair use."

The Survey makes no intellectual property claims to the products created by individual authors in the manuscript collections, except when the author deeded those rights to the Survey or when those authors were employed by the State of Arizona and created intellectual products as a function of their official duties. The Survey does maintain property rights to the physical and digital representations of the works.

QUALITY STATEMENT

The Arizona Geological Survey is not responsible for the accuracy of the records, information, or opinions that may be contained in the files. The Survey collects, catalogs, and archives data on mineral properties regardless of its views of the veracity or accuracy of those data.

02/28/91

ARIZONA DEPARTMENT OF MINES AND MINERAL RESOURCES FILE DATA

PRIMARY NAME: BLUE DUNES

ALTERNATE NAMES:

MARICOPA COUNTY MILS NUMBER: 94

LOCATION: TOWNSHIP 4 N RANGE 7 W SECTION 27 QUARTER NE
LATITUDE: N 33DEG 39MIN 56SEC LONGITUDE: W 112DEG 57MIN 06SEC
TOPO MAP NAME: BELMONT MTS - 15 MIN

CURRENT STATUS: RAW PROSPECT

COMMODITY:

COPPER OXIDE
SILVER
GOLD LODE

BIBLIOGRAPHY:

USGS BELMONT MTS QUAD
ADMMR BLUE DUNES FILE

BLUE DUNES

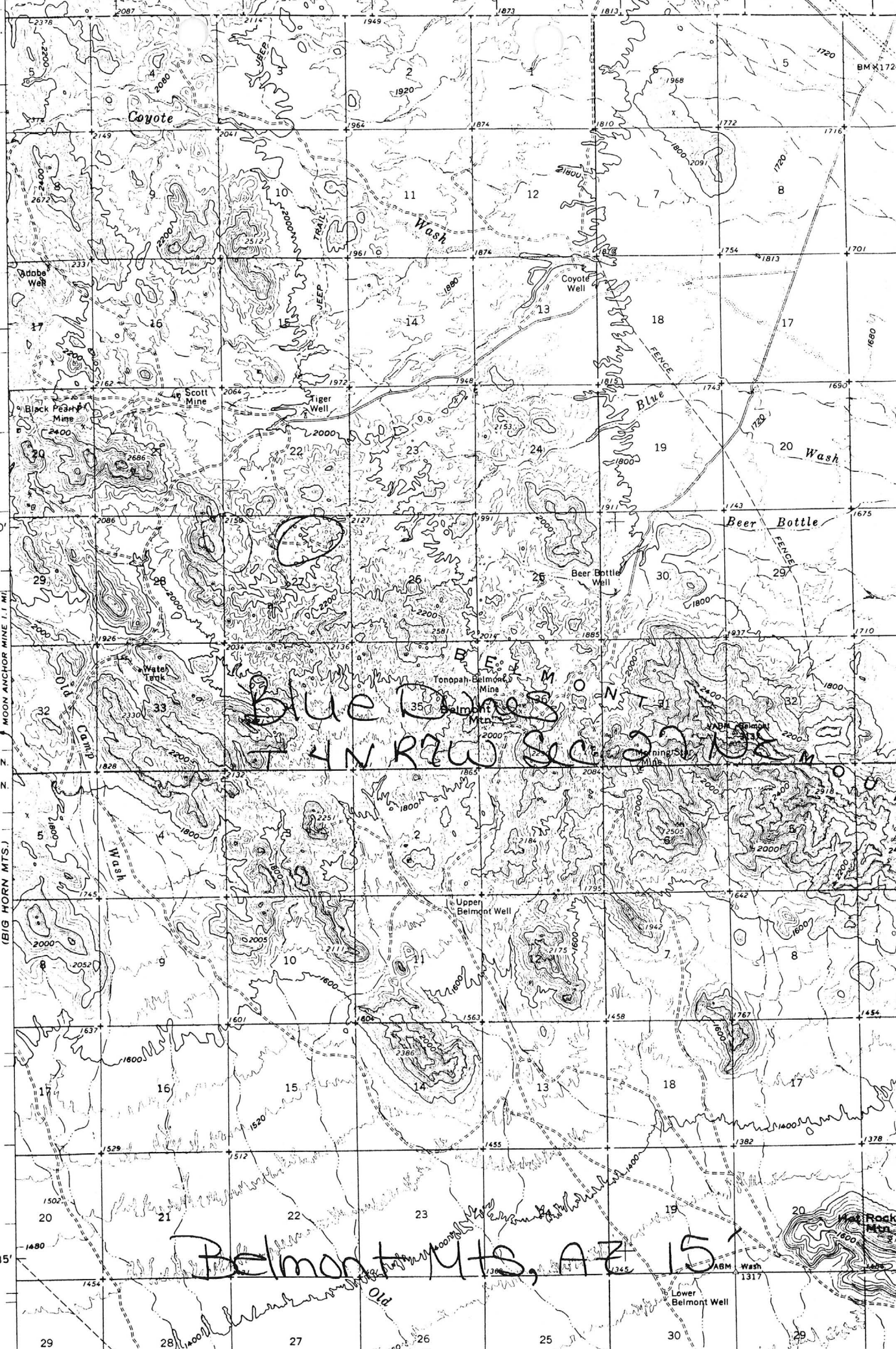
REFERENCES

MARICOPA COUNTY
OSBORN DIST.
T4N R7W Sec. 27 NE

Maricopa County MILS Index #94

Belmont Mts., AZ 15' Topo (included in file)

T. 5 N.
T. 4 N.
40'
T. 4 N.
T. 3 N.
35'



Handwritten: BLUE BONES
T 4N RTW SEC 22 NE M

Handwritten: Belmont Mts, AZ 15

BM 1726

Max Rock Mt.

Henry Bain, P.O. Box 297, Morrystown, Arizona, was in to request an engineer to visit his prospect. He has three claims, the Blue Dunes 1-3 on what he believes is a copper-silver vein in the NW $\frac{1}{4}$, Sec. 27, T4N R7W, G&SRBM. He can be contacted by either mail or by calling Charles Hallman at the Rollin Hogan Trailer Park in Wickenburg, 684-2853. The information was given to Glen Walker who will contact Mr. Bain. KAP WR 11/28/73

Went with Henry Bain, Detroit, to his and Charles Hallman's Cu prospect in Sec. 27, T4N R7W. They have 8 "Blue Dune" unpatented claims; on one of which they have found three small showings of oxide copper mineralization. They contracted with "Sandy" Sanders, Wickenburg, to dig 5-6 trenches with a back hoe; this was in progress when I arrived. An E-W trench was being dug near an old shallow prospect hole. Here the schist strikes N30°E and dips steeply to the east. There is an andisite flow cutting off the mineralization to the west; it extends only 4 $\frac{1}{2}$ -6 feet east. And at a depth of 10 feet in the trench the mineralization has petered out entirely. The other two showings are several hundred feet east from the andisite schist contact and are very superficial as indicated by the back-hoe excavation. Although they have had assays of silver in excess of 100 oz/ton, these were of specimen material. It was indicated to them how samples should be taken and a suggestion made that there are many Cu prospects better than this one. GW WR 12/3/73

D. ALAN BREESE, SR.

Assayer and Chemist

SINCE 1940

DENVER, COLORADO 80211

*Blue Mines 1-3
Henry Bain Property*

FIRE ASSAY

\$2.00 UP

AREA CODE 303

PHONE 934 3898

D. A. BREESE
1947 SO. DELAWARE
DENVER, COLORADO 80211

WET ASSAY

\$1.75 UP

*1.75
Copper
only*

REPORT ON DETERMINATIONS MADE FOR

Mr. Henry Bain
2211 Austin
Walled Lake, Mi., 48088.

Apr. 1, 1973.

SAMPLE MARKS	METALS	Amount or Ton Hrs.	PER CENT	Value per Ton	
				Dollars	Cents
Ore Sample.	Gold	0.05	\$ 4.48	
	Silver	110.4	245.09	
	Copper	15.2	182.40	
	Total.			\$ 431.97	

Account paid in full.

*To date,
DB*

\$ 89.55 NY. variable.
GOLD AT _____ PER OUNCE
LEAD AT _____ PER UNIT
ZINC AT _____ PER UNIT

\$ 2.22 NY variable.
SILVER AT _____ PER OUNCE
COPPER AT \$ 12.00 PER UNIT

Thank you,
By *D. A. Breece, Sr.*

IRON KING ASSAY OFFICE
ASSAY CERTIFICATE

BOX 14 - PHONE 632-7410
HUMBOLDT, ARIZONA 86329

Glenn
Results of Mel Jones
Sampling Charles
Hallmas
Prospect
qu

ASSAY
MADE
FOR

MELVIN JONES
P.O. Box 406
Wickenburg, Ariz. 85368

January 5, 1974

DESCRIPTION	oz/ton Au	oz/ton Ag	# % W	% Fe	% Pb	% Zn	% Cu
A	.015	0.75					0.57
B	0.000	0.38					0.73
YGM	0.012	1.53					1.20
C	.012	1.53					1.20
D			9.26				
<i>n.w. of Belmont mine</i>							

Walter
21
1974

ASSAYER

CHARGES \$17.25