



CONTACT INFORMATION

Mining Records Curator
Arizona Geological Survey
1520 West Adams St.
Phoenix, AZ 85007
602-771-1601
<http://www.azgs.az.gov>
inquiries@azgs.az.gov

The following file is part of the

Arizona Department of Mines and Mineral Resources Mining Collection

ACCESS STATEMENT

These digitized collections are accessible for purposes of education and research. We have indicated what we know about copyright and rights of privacy, publicity, or trademark. Due to the nature of archival collections, we are not always able to identify this information. We are eager to hear from any rights owners, so that we may obtain accurate information. Upon request, we will remove material from public view while we address a rights issue.

CONSTRAINTS STATEMENT

The Arizona Geological Survey does not claim to control all rights for all materials in its collection. These rights include, but are not limited to: copyright, privacy rights, and cultural protection rights. The User hereby assumes all responsibility for obtaining any rights to use the material in excess of "fair use."

The Survey makes no intellectual property claims to the products created by individual authors in the manuscript collections, except when the author deeded those rights to the Survey or when those authors were employed by the State of Arizona and created intellectual products as a function of their official duties. The Survey does maintain property rights to the physical and digital representations of the works.

QUALITY STATEMENT

The Arizona Geological Survey is not responsible for the accuracy of the records, information, or opinions that may be contained in the files. The Survey collects, catalogs, and archives data on mineral properties regardless of its views of the veracity or accuracy of those data.

PRINTED: 06/08/2001

ARIZONA DEPARTMENT OF MINES AND MINERAL RESOURCES AZMILS DATA

PRIMARY NAME: BLUE DICK

ALTERNATE NAMES:

SLATE CREEK MINING COMPANY
PATENTED CLAIMS MS 423
PATENTED CLAIMS MS 2943

YAVAPAI COUNTY MILS NUMBER: 1155C

LOCATION: TOWNSHIP 12 N RANGE 2 W SECTION 4 QUARTER W2
LATITUDE: N 34DEG 24MIN 40SEC LONGITUDE: W 112DEG 26MIN 35SEC
TOPO MAP NAME: GROOM CREEK - 7.5 MIN

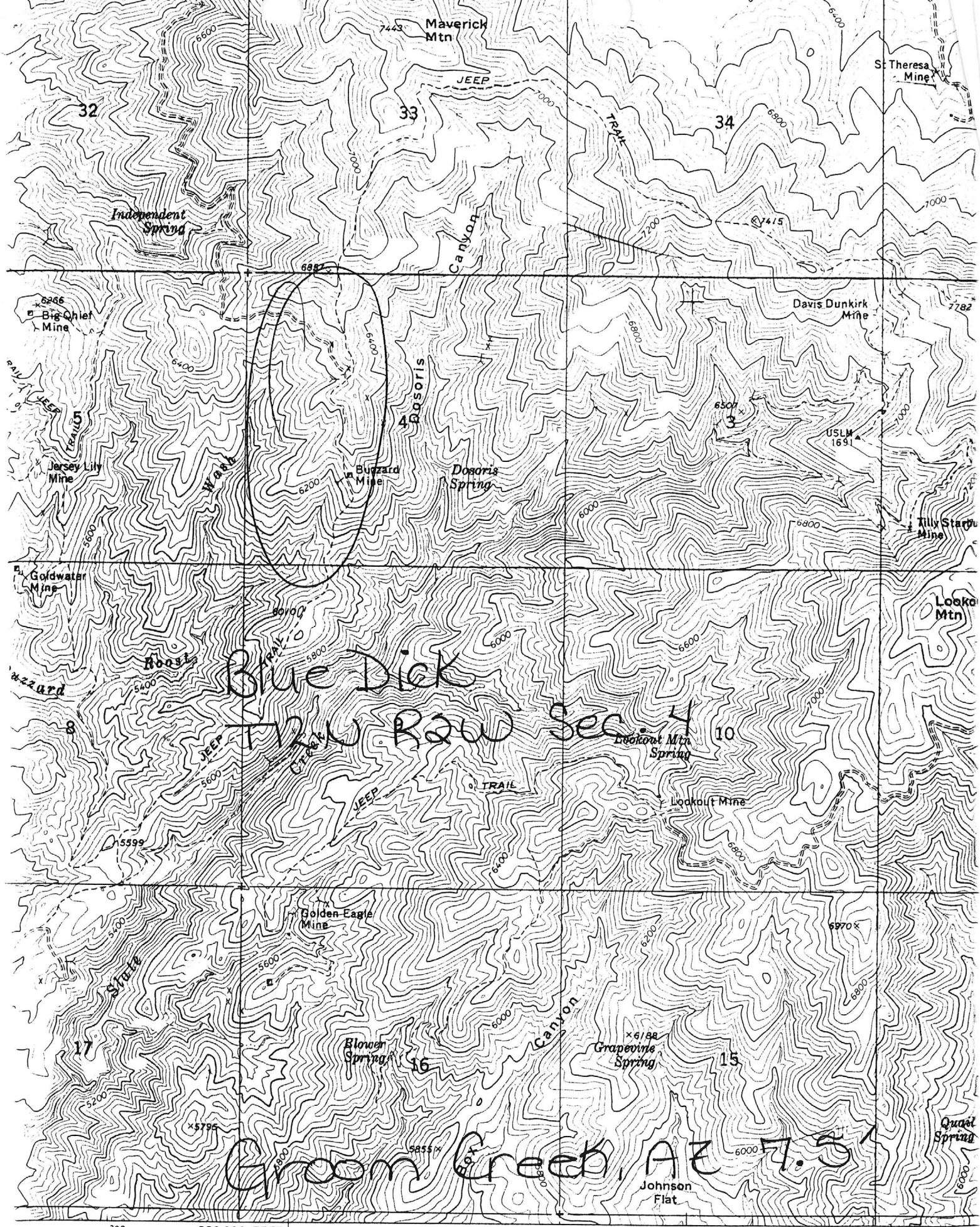
CURRENT STATUS: PAST PRODUCER

COMMODITY:

SILVER
LEAD
GOLD
ZINC
COPPER

BIBLIOGRAPHY:

USGS GROOM CREEK QUAD
BLM MINING DISTRICT SHEET 242
YAVAPAI MAGAZINE MAY 1918 P 3-6, JUNE 1921
P 10 SHARLOT HALL MUSEUM PRESCOTT, AZ
AZ MINING JOURNAL APRIL 1919 P 15
LINDGREN, W. ORE DEPTS OF JEROME AND BRADSHAW
MTNS QUADS USGS BULL 782 1926 P 117-118
ADMMR BLUE DICK FILE, USGS CRIB INFORMATION



BLUE DICK MINE+

YAVAPAI COUNTY

RRB WR 7/8/83: Al Goettel (work phone 243-5263) owner of the Blue Dick claims near Prescott, reports that Charles Porter, manager of the C.O.D. Mine in Mohave County, wants to lease the Blue Dick Claims. He says that they have already picked up numerous claims nearby that had been held by Homestake. He also said that they are installing a crusher, lab, etc. next to the Pepsi plant in the industrial park on the road out to the Dels.

~~NO FURTHER REPRESENTATION~~

* GENERAL REFERENCES

REFERENCE 1 P1 < USGM - ABGNT FILE DATA

1 - k file MILS p-8118

REFERENCE 2 P2 < ABGNT CLIPPINGS FILES

REFERENCE 3 P3 < USGS Bull 782, p. 117-118

REFERENCE 4 P4 < USGS 60 MAP 60 997

U.S. CRIB-SITE FORM

RECORD IDENTIFICATION

RECORD NUMBER B10 < _____ > RECORD TYPE B20 < X, I, M > DEPOSIT NUMBER B40 < _____ >
 REPORT DATE G1 < 8, 1, 12 > INFORMATION SOURCE B30 < 1, 2 > FILE LINK IDENT. B50 < USGM-004 025 0253 >
YR. MO.
 REPORTER(SUPERVISOR) G2 < DEWITT, ED, H. > (last, first, middle initial)
 REPORTER AFFILIATION G5 < USGS > SITE NAME A10 < BLUE DICK MINE >
 ANONYMS A11 < _____ >

LOCATION

MINING DISTRICT/AREA A30 < HASSAYAMPA DISTRICT >
 COUNTY A60 < YAVAPAI > STATE A50 < A.Z. > COUNTRY A40 < U.S. >
 PHYSIOGRAPHIC PROV A63 < 1, 2, 3 >
 DRAINAGE AREA A62 < 1, 5, 0, 7, 0, 1, 0, 3, 3 >
 QUADRANGLE NAME A90 < CROOM CREEK > (1, 9, 7, 4) LAND STATUS A64 < _____ >
 SECOND QUAD NAME A92 < _____ > QUADRANGLE SCALE A100 < 24, 0, 0, 0 >
 ELEVATION A107 < 1, 6, 4, 6, 0, 0, 0, F, T > SECOND QUAD SCALE A91 < _____ >

UTM
 NORTHING A120 < 3, 9, 0, 9, 7, 8, 0 >
 EASTING A130 < 3, 6, 4, 2, 3, 0 >
 ZONE NUMBER A110 < 1, 1, 2 >

* ACCURACY
 ACCURATE ACC (circle)
 ESTIMATED EST < _____ >

GEODETIC
 LATITUDE A70 < _____ N >
 LONGITUDE A80 < _____ W >

CADASTRAL

TOWNSHIP(S) A77 < 0, 1, 2, N, 1, 2, 3, 4, 5, 6, 7, 8, 9 > RANGE(S) A78 < 0, 0, 2, W, 1, 2, 3, 4, 5, 6, 7, 8, 9 >
 SECTION(S) A79 < 04 >
 SECTION FRACTION(S) A76 < NW >
 MERIDIAN(S) A81 < GILA AND SALT RIVER >

POSITION FROM NEAREST PROMINENT LOCALITY A82 < 1.0 MILES DUE SOUTH OF MAVERICK MOUNTAIN >
 LOCATION COMMENTS A83 < ON EAST SIDE OF RIDGE, JUST WEST OF MARK TWAIN MINE >

COMMODITY INFORMATION

* COMMODITIES PRESENT C10 < CU, W.A.G., VEIN, W.P.B. >
 * ORE MINERALS C30 < CHALCOPYRITE, GOLD, SSMALITE, CALENA, TETRAHEDRITE >
 COMMODITY SUBTYPES C41 < >
 GEN. ANALYTICAL DATA C43 < >
 COM. INFO. COMMENTS C50 < >

* SIGNIFICANCE

	PRODUCER		NON-PRODUCER	
MAJOR PRODUCTS	MAJOR < W.A.G., W.P.B. >		MAIN COMMODITIES PRESENT C11 < >	
MINOR PRODUCTS	MINOR < CU, >		MINOR COMMODITIES PRESENT C12 < >	
POTENTIAL PRODUCTS	POTEN < W.P.B. >			
OCCURRENCES	OCCUR < >		OCCUR < >	

* PRODUCTION

	PRODUCER		NON-PRODUCER	
PRODUCTION: YES (circle)	PRODUCTION SIZE (SM) MED LGE (circle one)		PRODUCTION UND NO (circle one)	

* STATUS

EXPLORATION OR DEVELOPMENT

	PRODUCER		NON-PRODUCER	
	STATUS AND ACTIVITY A20 < 4 >		STATUS AND ACTIVITY A20 < >	

DISCOVERER L20 < >
 YEAR OF DISCOVERY L10 < > NATURE OF DISCOVERY L30 < B > YEAR OF FIRST PRODUCTION L40 < 1902 > YEAR OF LAST PRODUCTION L45 < 1928 >
 PRESENT/LAST OWNER A12 < >
 PRESENT/LAST OPERATOR A13 < V.F. GROVE AND SONS >
 EXPL./DEV.COMMENTS L110 < >

DESCRIPTION OF DEPOSIT

DEPOSIT TYPE(S) C40 < VEIN >
 DEPOSIT FORM/SHAPE M10 < TABULAR >
 DEPTH TO TOP M20 < > UNITS M21 < > MAXIMUM LENGTH M40 < > UNITS M41 < >
 DEPTH TO BOTTOM M30 < > UNITS M31 < > MAXIMUM WIDTH M50 < > UNITS M51 < >
 DEPOSIT SIZE M15 < SMALL > M16 < MEDIUM > M17 < LARGE > (circle one) MAXIMUM THICKNESS M60 < > UNITS M61 < >
 STRIKE M70 < NORTH > DIP M80 < EAST >
 DIRECTION OF PLUNGE M100 < > PLUNGE M90 < >
 DEP. DESC. COMMENTS M110 < MARK DOWN IS PARALLEL VEIN, LOCATED A SHORT DISTANCE WEST OF THE BLUE DIKE >

DESCRIPTION OF WORKINGS

Workings are: SURFACE M120 UNDERGROUND M130 BOTH M140 (circle one) OVERALL LENGTH M190 < > UNITS M191 < >
 DEPTH BELOW SURFACE M160 < > UNITS M161 < > OVERALL WIDTH M200 < > UNITS M201 < >
 LENGTH OF WORKINGS M170 < > UNITS M171 < > OVERALL AREA M210 < > UNITS M211 < >
 DESC. OF WORK. COM. M220 < MAIN TUNNEL IS 200 FT BELOW THE RIDGE, ON THE EAST SIDE >

GEOLOGY

* AGE OF HOST ROCK(S) K1 < P.R.O.T., T.E.R.T., W.P.B. ZIRCON GREATER THAN 1760 MILLION YEARS; UNDATED >
 * HOST ROCK TYPE(S) K1A < AMPHIBOLITE, SLATE; RHYOLITE >
 * AGE OF IGNEOUS ROCK(S) K2 < P.R.O.T., T.E.R.T., W.P.B. ZIRCON GREATER THAN 1760 MILLION YEARS >
 * IGNEOUS ROCK TYPE(S) K2A < META-BASALT; RHYOLITE >
 * AGE OF MINERALIZATION K3 < C.R.E.T.-P.A.L.E.O.C., UNDATED, PROBABLY PALEOCENE-MIOCENE; POSSIBLY PRECAMBRIAN >
 * PERT. MINERALS (NOT ORE) K4 < QUARTZ, PYRITE, ANKERITE, ARSENOPYRITE >
 * ORE CONTROL/LOCUS K5 < FAULTING, SHEARING >
 * MAJ. REG. TRENDS/STRUCT. N5 < FOLIATION IN PRECAMBRIAN ROCKS TRENDS N10W TO N30E >
 * TECTONIC SETTING N18 < >
 * SIGNIFICANT LOCAL STRUCT. N70 < DIKES AND VEINS PARALLEL FOLIATION >
 * SIGNIFICANT ALTERATION N75 < NONE >
 * PROCESS OF CONC./ENRICH. N80 < OXIDATION AT NEAR SURFACE >
 * FORMATION AGE N30 < P.R.O.T., W.P.B. ZIRCON GREATER THAN 1760 MILLION YEARS >
 * FORMATION NAME N30A < UNDIFFERENTIATED GREEN GULCH VOLCANICS >
 SECOND FM AGE N35 < >
 SECOND FM NAME N35A < >
 * IGNEOUS UNIT AGE N50 < C.R.E.T.-T.E.R.T., W.P.B. >
 * IGNEOUS UNIT NAME N50A < UNNAMED RHYOLITE DIKES >
 SECOND IG. UNIT AGE N55 < >
 SECOND IG. UNIT NAME N55A < >
 GEOLOGY COMMENTS N85 < DEPOSIT IS VEIN WHICH CUTS PRECAMBRIAN METAVOLCANIC AND METASEDIMENTARY ROCKS. RHYOLITE BORNHAY DIKES OF PROBABLE ICRET-TEKT AGE POSSIBLY ASSOC. WITH VEINS >

GENERAL COMMENTS

GENERAL COMMENTS GEN < LINDGREN (USGS BULL 792, P. 118) THOUGHT THE BLUE DIKE WAS OF PRECAMBRIAN AGE. >