



CONTACT INFORMATION

Mining Records Curator
Arizona Geological Survey
1520 West Adams St.
Phoenix, AZ 85007
602-771-1601
<http://www.azgs.az.gov>
inquiries@azgs.az.gov

The following file is part of the

Arizona Department of Mines and Mineral Resources Mining Collection

ACCESS STATEMENT

These digitized collections are accessible for purposes of education and research. We have indicated what we know about copyright and rights of privacy, publicity, or trademark. Due to the nature of archival collections, we are not always able to identify this information. We are eager to hear from any rights owners, so that we may obtain accurate information. Upon request, we will remove material from public view while we address a rights issue.

CONSTRAINTS STATEMENT

The Arizona Geological Survey does not claim to control all rights for all materials in its collection. These rights include, but are not limited to: copyright, privacy rights, and cultural protection rights. The User hereby assumes all responsibility for obtaining any rights to use the material in excess of "fair use."

The Survey makes no intellectual property claims to the products created by individual authors in the manuscript collections, except when the author deeded those rights to the Survey or when those authors were employed by the State of Arizona and created intellectual products as a function of their official duties. The Survey does maintain property rights to the physical and digital representations of the works.

QUALITY STATEMENT

The Arizona Geological Survey is not responsible for the accuracy of the records, information, or opinions that may be contained in the files. The Survey collects, catalogs, and archives data on mineral properties regardless of its views of the veracity or accuracy of those data.

PRIMARY NAME: BLUEBELL

ALTERNATE NAMES:

MARICOPA COUNTY MILS NUMBER:483B

LOCATION: TOWNSHIP 4 N RANGE 3 E SECTION 22 QTR. NW
LATITUDE:N 33DEG 40MIN 42SEC LONGITUDE:W 112DEG 02MIN 49SEC
TOPO MAP NAME: UNION HILLS - 7.5 MIN

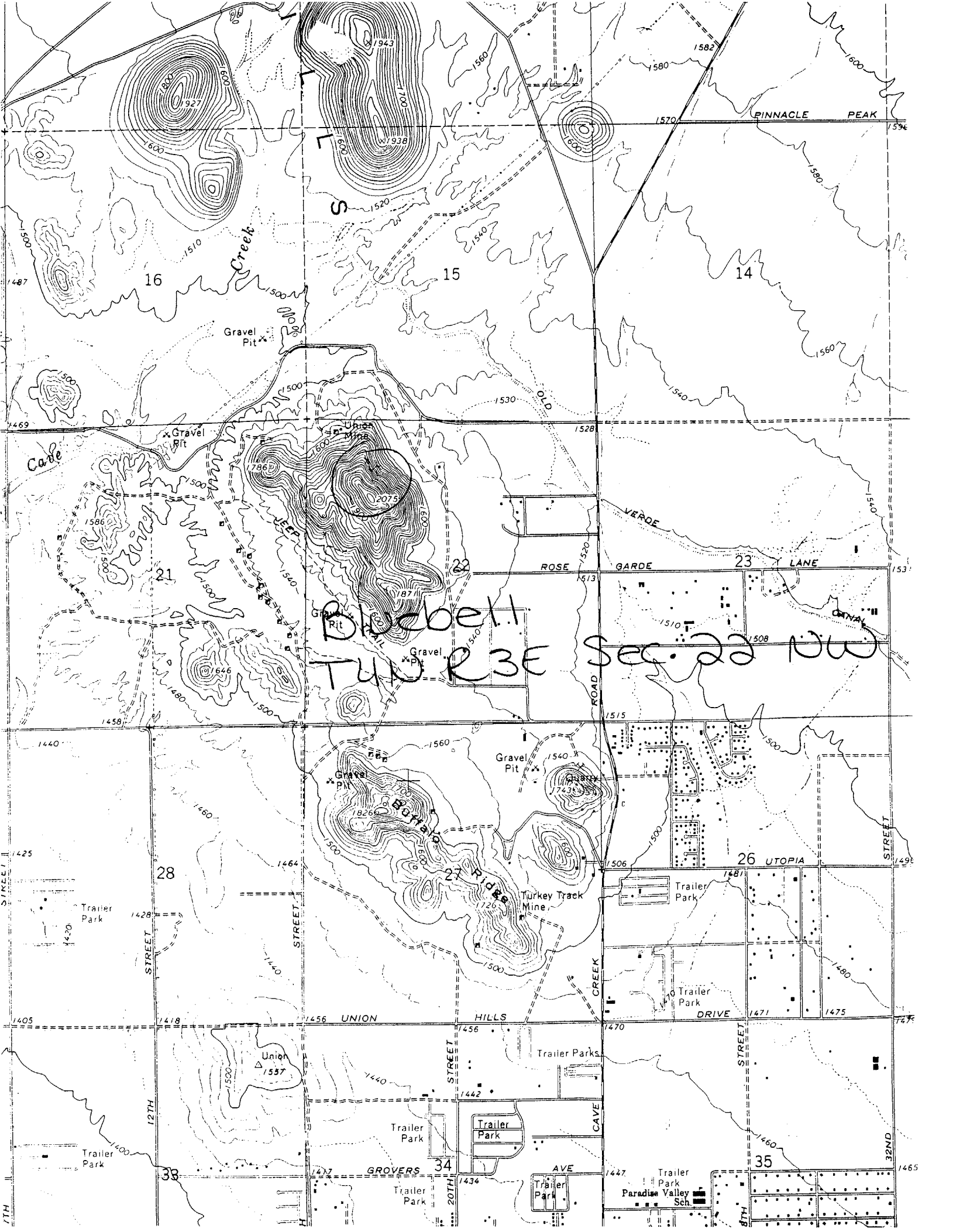
CURRENT STATUS: UNKNOWN

COMMODITY:

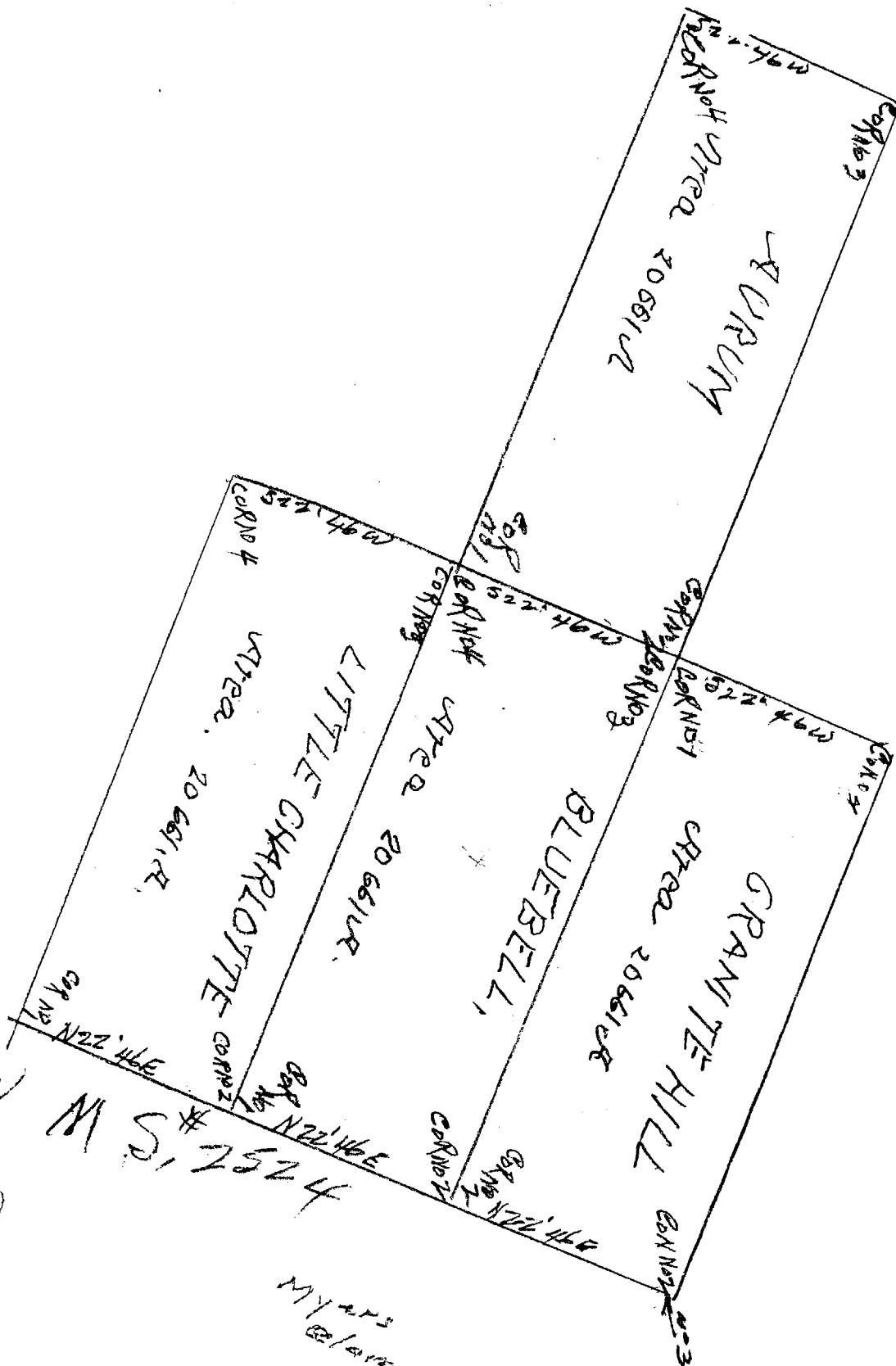
GOLD-(M) LODE-PRIMARY

BIBLIOGRAPHY:

USGS UNION HILLS QUAD
ADMR BLUEBELL MINE FILE



Blubbell
TUOR 3E Sec. 22 NW

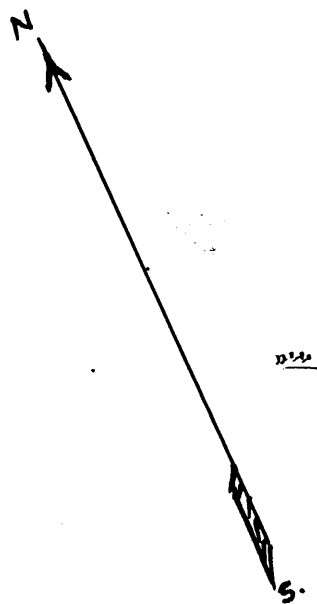
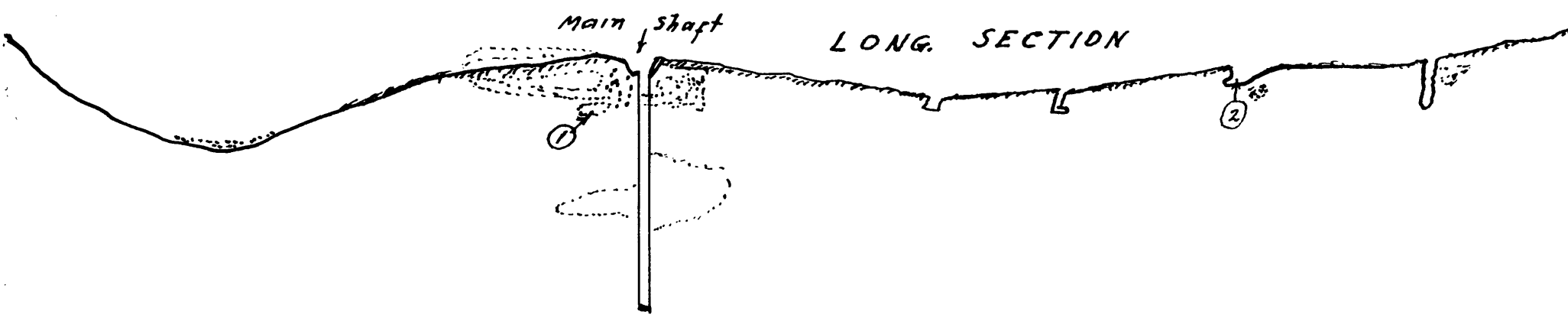


MS # 2524

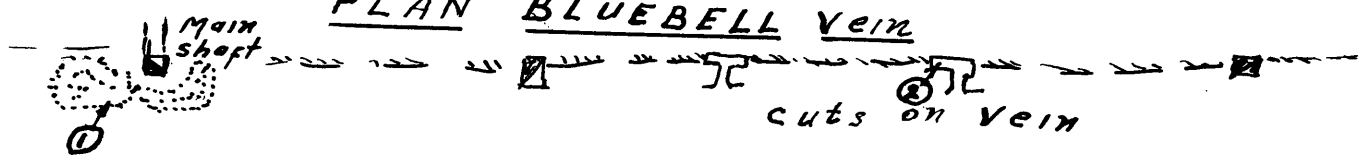
Myers
Blair



Granite Hill



PLAN BLUEBELL Vein



Assays

No	Au.	Width	\$ Per ton
1	1.37	4 TONS	42.95
2	.04	1 FT	1.40

Sketch Plan and Section
BLUE BELL GOLD IN
Winifred Mng. District
Mariopca County, Ariz.
W.G. Hockett owner
Approx. Scale 1" To 100 Ft
Dept. of Mineral Resources
Jan. 2nd 1945

January 15, 1945

Mr. W. G. Hockett
2322 North 9th Street
Phoenix, Arizona

Dear Mr. Hockett:

Enclosed are six copies of report
on Bluebell Mine and two copies of sketch map
by Andrew Macfarlane.

Yours very truly,

Secretary

lp
Enc.

No. 201 Ho

Phoenix, Arizona,

CHAS. A. DIEHL

Nov. 22, 1944.

ARIZONA ASSAY OFFICE

Phone 3-4001

815 North First Street

P. O. Box 1148

This Certifies That samples submitted for assay by **Mr. W. G. Hockett.**

contain as follows per ton of 2000 lbs. Avoir.

MARKS	SILVER		VALUE (Oz.)	GOLD		VALUE (Oz.)	TOTAL VALUE Of Gold and Silver	PERCENTAGE				REMARKS
	Ounces	Tenths		Ounces	Hundredths							
						\$35.00						
Blue Bell-Grab from small pile. at Top of main shaft				1.37		\$47.95						
Blue Bell 1 foot outcrop vein.				.04		\$1.40						
Contention-No. 1				.01		\$.35						not on the main vein

Charges \$ 3.00 Paid MHC

Assayer ARIZONA ASSAY OFFICE
CAD

0202 Ho

Phoenix, Arizona;
Nov. 23, 1944.

CHAS. A. DIEHL

ARIZONA ASSAY OFFICE

Phone 3-4001

815 North First Street

P. O. Box 1148

This Certifies That samples submitted for assay by Mr. W.G. Hockett.

contain as follows per ton of 2000 lbs. Avoir.

MARKS	SILVER		VALUE (Oz.)	GOLD		VALUE (Oz.)	TOTAL VALUE Of Gold and Silver	PERCENTAGE				REMARKS
	Ounces	Tenths		Ounces	Hundths							
						\$35.00						
Norman Shaft 100 LW	Trace			.01		\$.35						
Norman Dump 10 tons	.2			.12		\$4.20						
Great Scott #1	.1			.08		\$2.80						
Great Scott-Bold cropping.	.2			.01		\$.35						
Great Scott-E. Cut	.1			.02		\$.70						

Charges \$ 6.25 Paid

Assayer ARIZONA ASSAY OFFICE

(AM)

DEPARTMENT OF MINERAL RESOURCES
STATE OF ARIZONA
FIELD ENGINEERS REPORT

Mine BLUEBELL

Date January 5th, 1945

District Winifred, Maricopa Co. Arizona

Engineer A. Macfarlane

Subject: W.G. Hockett Owner, Phoenix, Arizona.

LOCATION

The Bluebell group of 4 claims, were located many years ago, to cover a vein of gold bearing quartz ores. The claims were at one time several years ago the property of Ezra Thayer, a Phoenix business man, who had the ground patented, and only within the past year, acquired by Mr Hockett at tax sale.

The mine workings of the Bluebell are along the south foothill slope of a rather high granite schist hill, in the heart of the Winifred mining district, and approximately 21 miles northerly from the center of the city of Phoenix.

The Union mine and the Jack White mines are respectively 1 and 2 miles northerly from the Bluebell; all these 3 mines have a small past production record, both from smelting grade ores and some small milling operations by amalgamation

MINE WORKINGS

/a

Consists principally of a shaft sid to be about 200' in depth, and this follows the vein down on its near vertical dip; the three upper collar sets are gone and the mouth of the shaft is about 15' in a rough diameter, making entrance to the shaft impracticable; in fact no shaft timbers in place are visible.

Southeasterly along the vein cropping are a few small incissions made at points where the croppings came to the surface, these cuts extend several hundred feet distant from the main shaft.

No doubt some drifting and stoping has been made on the vein from the shaft ends as some ores have been sold from this mine and a dump of waste and vein quartz of about 1,500 tons, has been piled on the surface, just below the shaft collar.

Geological Features

The Winifred district near the Bluebell is composed of a series of granite hills of a dark gray color, stated to be (pre-Cambrian) with small masses and dykes of schist and acid porphyry included.

Vein forming agencies have been active covering several square miles of the vicinity and resultant thereto, many thin bands of quartz, in some parts of the structures, carry gold values; the depositing solutions being almost barren of silver, lead, copper, zinc or other minerals.

Gold of commercial grade has been mined from depths of just below the cropping down to the 500 foot level of the Jack White mine and to near the 400' level of the Union.

It is apparent that some smelting grade of gold ores, were mined

DEPARTMENT OF MINERAL RESOURCES
STATE OF ARIZONA
FIELD ENGINEERS REPORT

Mine

Date

District

Engineer

Subject:

BLUEBELL

2

from near the 200' level of the Bluebell shaft, as a small pile of ore left from some long past stoping work, was sampled by the writer and this sample contained 1.37 Ozs. of gold per ton.

The fissures of the locality vary in width from a few inches to over 4 feet; looking down the Bluebell shaft, the vein is visible nearly to a width of more than 4 feet, filled with white to gray quartz.

The Bluebell fissure is tracable on the surface for more than a thousand feet, only minor faulting or one dislocation noted some 300' north west of the main shaft; but the throw may be only a few feet off the vein course as taken at the shaft.

ECONOMIC FEATURES

Due to the accessibility of the Bluebell ground and the workings thereon, also the gradual slope of the hill ~~slope~~ to reach the shaft, only a few hours work of a Bulldozer would make a good road connecting to nearby roads and highway leading to Phoenix and rail transportation.

The clean quartz ores no doubt are very amenable to the use of the cyanide process, for the gold recovery, in the event sufficient drifting along the vein and other underground developments, make available a sufficient tonnage of these ores.

It is recommended, that the shaft be timbered and competent hoist and air drilling equipment be installed, in order to facilitate the driving of long drifts, along the lode, at appropriate depths.

A few hundred feet of drifting on say the 200 foot level, both northwest and southeast from the shaft, may open a small gold mine of some commercial value.

t

Electric power should be available at an economic cost and water ~~for~~ for milling is obtainable by pumping from a well within 1 mile of the mine.

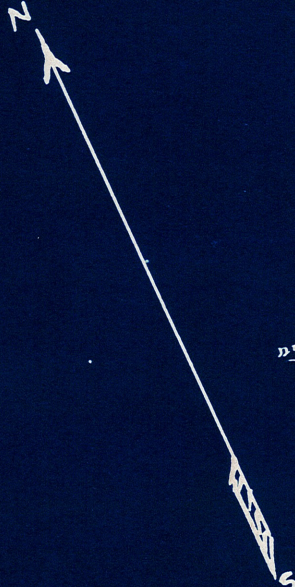
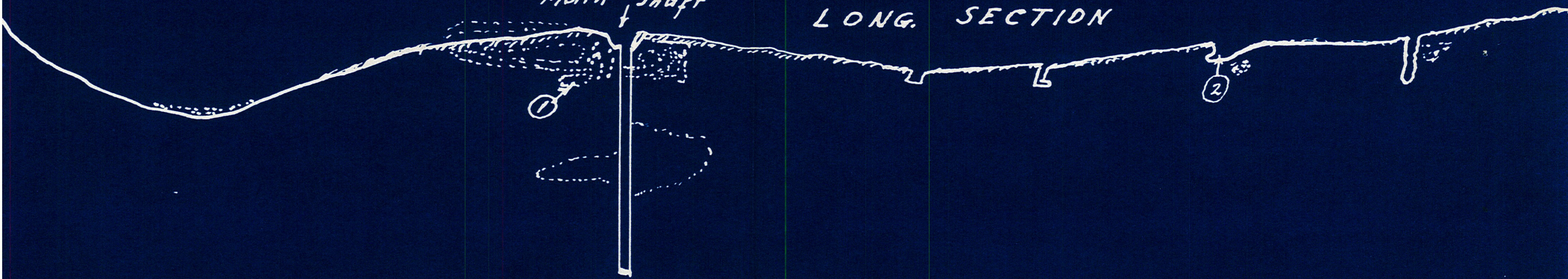
The past production record of the Union, Jack White and Bluebell mines is over \$200,000.00 this made when gold was fixed at \$20. per ounce.

The operation of a small cyaniding mill of 30 or 40 tons daily capacity, to follow re-opening of these small gold properties, should prove the most efficient course and would provide a market for low grade gold ores of the immediate locality.

Granite Hill

LONG. SECTION

Main shaft



PLAN BLUEBELL Vein



Cuts on Vein

Assays			
No	Au.	Width	\$ Per Ton
1	1.37	4 To 15	42.95
2	.04	1 FT	1.40

Sketch Plan and Section
BLUE BELL GOLD IN

Winifred Mng. District

Maricopa County, Ariz.

W.G. Hockett owner

Approx. Scale 1" To 100 Ft

Dept. of Mineral Resources

Jan. 2nd 1945