



## **CONTACT INFORMATION**

Mining Records Curator  
Arizona Geological Survey  
1520 West Adams St.  
Phoenix, AZ 85007  
602-771-1601  
<http://www.azgs.az.gov>  
[inquiries@azgs.az.gov](mailto:inquiries@azgs.az.gov)

The following file is part of the

Arizona Department of Mines and Mineral Resources Mining Collection

## **ACCESS STATEMENT**

These digitized collections are accessible for purposes of education and research. We have indicated what we know about copyright and rights of privacy, publicity, or trademark. Due to the nature of archival collections, we are not always able to identify this information. We are eager to hear from any rights owners, so that we may obtain accurate information. Upon request, we will remove material from public view while we address a rights issue.

## **CONSTRAINTS STATEMENT**

The Arizona Geological Survey does not claim to control all rights for all materials in its collection. These rights include, but are not limited to: copyright, privacy rights, and cultural protection rights. The User hereby assumes all responsibility for obtaining any rights to use the material in excess of "fair use."

The Survey makes no intellectual property claims to the products created by individual authors in the manuscript collections, except when the author deeded those rights to the Survey or when those authors were employed by the State of Arizona and created intellectual products as a function of their official duties. The Survey does maintain property rights to the physical and digital representations of the works.

## **QUALITY STATEMENT**

The Arizona Geological Survey is not responsible for the accuracy of the records, information, or opinions that may be contained in the files. The Survey collects, catalogs, and archives data on mineral properties regardless of its views of the veracity or accuracy of those data.

06/23/1999

ARIZONA DEPARTMENT OF MINES AND MINERAL RESOURCES FILE DATA

PRIMARY NAME: HAWAII & HONILULU PAT. MS 1551

ALTERNATE NAMES:

BLUE ROCK VEIN

YAVAPAI COUNTY MILS NUMBER: 1077C

LOCATION: TOWNSHIP 12.5N RANGE 1 W SECTION 21 QUARTER E2  
LATITUDE: N 34DEG 27MIN 06SEC LONGITUDE: W 112DEG 21MIN 45SEC  
TOPO MAP NAME: POLAND JUNCTION - 7.5 MIN

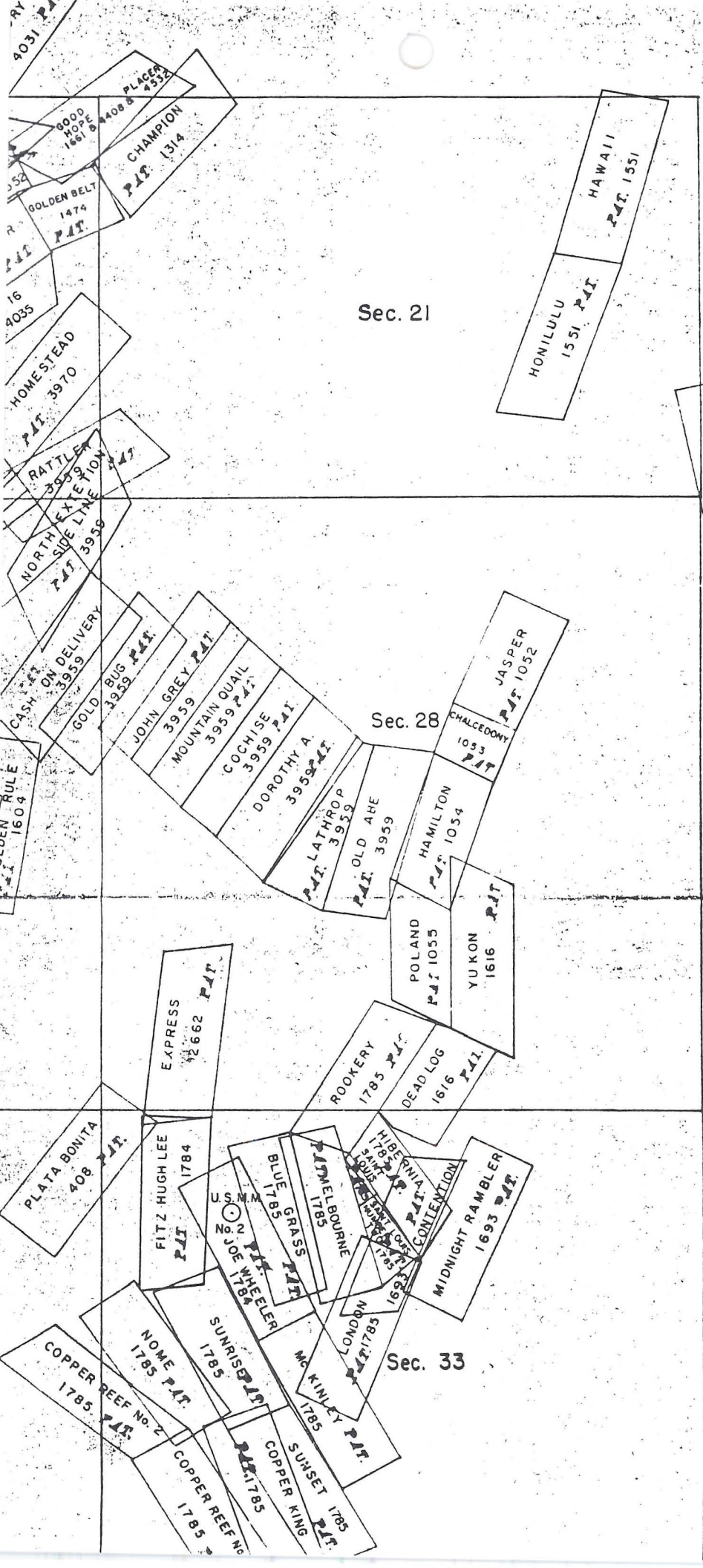
CURRENT STATUS: UNKNOWN

COMMODITY:

GOLD

BIBLIOGRAPHY:

USGS POLAND JUNCTION QUAD  
BLM MINING DISTRICT SHEET 224  
COE AND VAN LOO INFORMATION  
ADMMR BLUE ROCK VEIN FILE  
BLUE ROCK MISLOCATED NJN 6/1999 ITS IN SEC 28



Sec. 21

Sec. 28

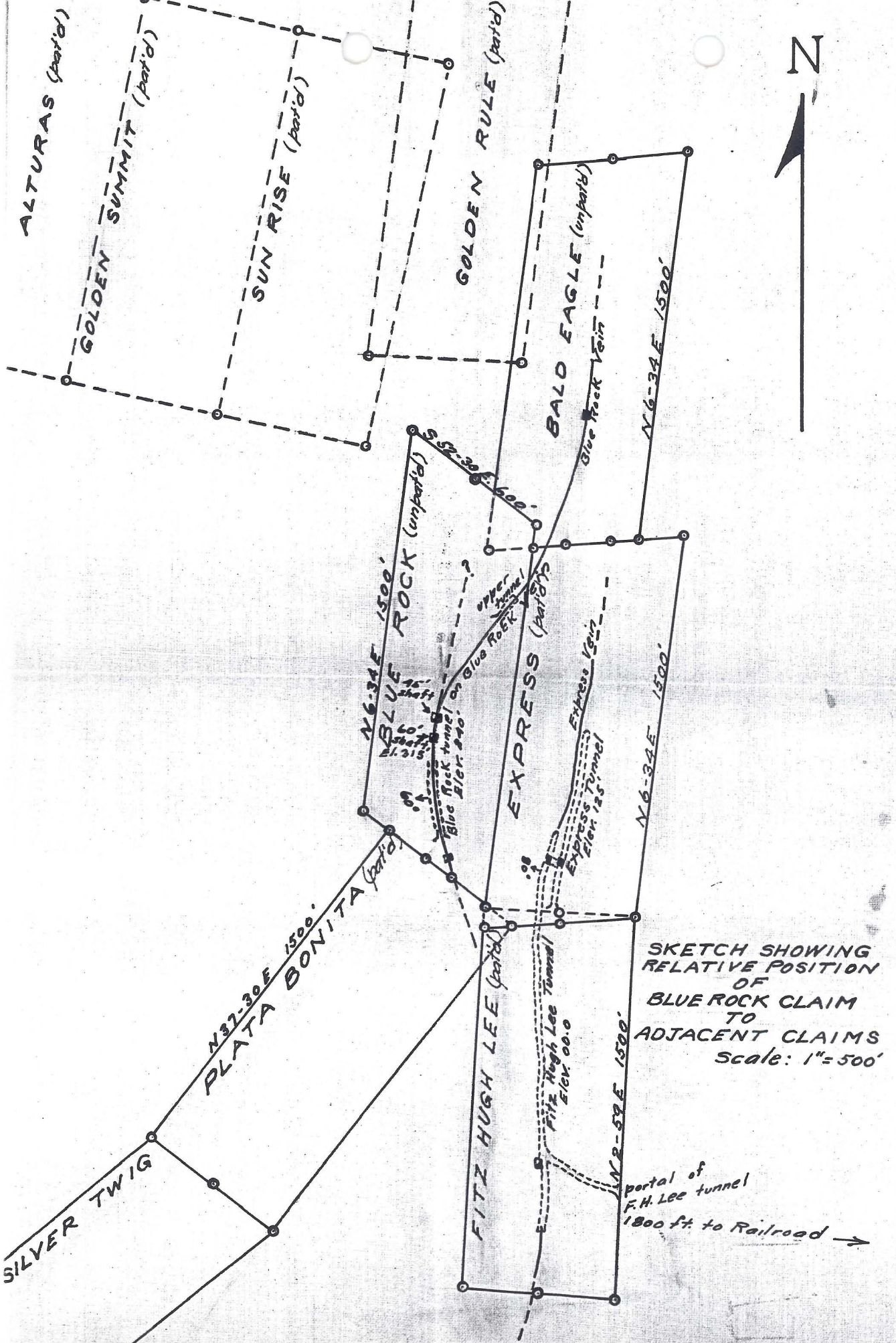
Sec. 33

COPPER DYKE  
PAT. 4003

W. 1/2, T. 12 1/2 N., R. 1 W  
 HASSAYAMPA DIST.  
 BIG BUG DIST.  
 WALKER DIST.  
 TURKEY CREEK DI **223**

LOCATION PROBLEM  
 BLUE ROCK NOT  
 CLOSE TO HAWAII (PAT.)  
 N5N 661999





SKETCH SHOWING  
RELATIVE POSITION  
OF  
BLUE ROCK CLAIM  
TO  
ADJACENT CLAIMS  
Scale: 1"=500'

Yavapai Co., Big Bug