



CONTACT INFORMATION

Mining Records Curator
Arizona Geological Survey
1520 West Adams St.
Phoenix, AZ 85007
602-771-1601
<http://www.azgs.az.gov>
inquiries@azgs.az.gov

The following file is part of the

Arizona Department of Mines and Mineral Resources Mining Collection

ACCESS STATEMENT

These digitized collections are accessible for purposes of education and research. We have indicated what we know about copyright and rights of privacy, publicity, or trademark. Due to the nature of archival collections, we are not always able to identify this information. We are eager to hear from any rights owners, so that we may obtain accurate information. Upon request, we will remove material from public view while we address a rights issue.

CONSTRAINTS STATEMENT

The Arizona Geological Survey does not claim to control all rights for all materials in its collection. These rights include, but are not limited to: copyright, privacy rights, and cultural protection rights. The User hereby assumes all responsibility for obtaining any rights to use the material in excess of "fair use."

The Survey makes no intellectual property claims to the products created by individual authors in the manuscript collections, except when the author deeded those rights to the Survey or when those authors were employed by the State of Arizona and created intellectual products as a function of their official duties. The Survey does maintain property rights to the physical and digital representations of the works.

QUALITY STATEMENT

The Arizona Geological Survey is not responsible for the accuracy of the records, information, or opinions that may be contained in the files. The Survey collects, catalogs, and archives data on mineral properties regardless of its views of the veracity or accuracy of those data.

09/24/86

ARIZONA DEPARTMENT OF MINES AND MINERAL RESOURCES FILE DATA

PRIMARY NAME: BLUE LODE

ALTERNATE NAMES:

MARICOPA COUNTY MILS NUMBER: 696

LOCATION: TOWNSHIP 6 N RANGE 5 E SECTION 12 QUARTER --
LATITUDE: N DEG MIN SEC LONGITUDE: W DEG MIN SEC
TOPO MAP NAME: HUMBOLDT MOUNTAIN - 7.5 MIN

CURRENT STATUS: UNKNOWN

COMMODITY:
UNKNOWN

BIBLIOGRAPHY:
ADMMR BLUE LODE FILE

Arizona Department of Mines and Mineral Resources

INFORMATION FROM MINE CARDS IN MUSEUM

ARIZONA

Maricopa County

Blue Lode Claim

Cave Creek Dist.

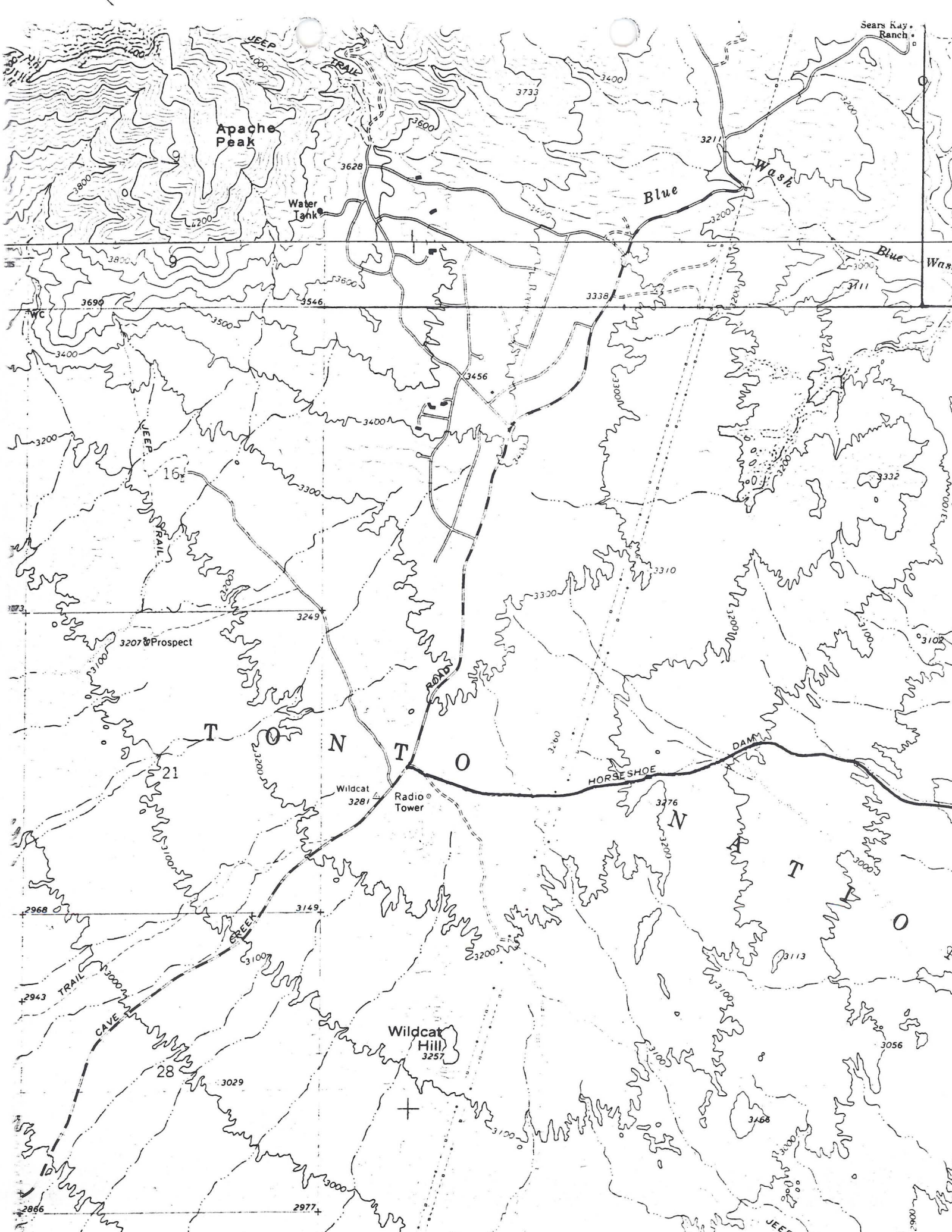
MILS # 696

O-AKA's

BLUE LODE (file)

MM 9865 Granite, altered

MM 9866 Granite, altered



N

12

Blue Lode
#1

3749000m N.

33°52'30"

1 040 000
FEET

3745

3744

50'

JEEP
TRAIL

ROAD

DAM

HORSESHOE

JEEP

TRAIL

TRAIL

JEEP

Blue Mountain

Blue Mtn
Spring Prospect

Water
Tank

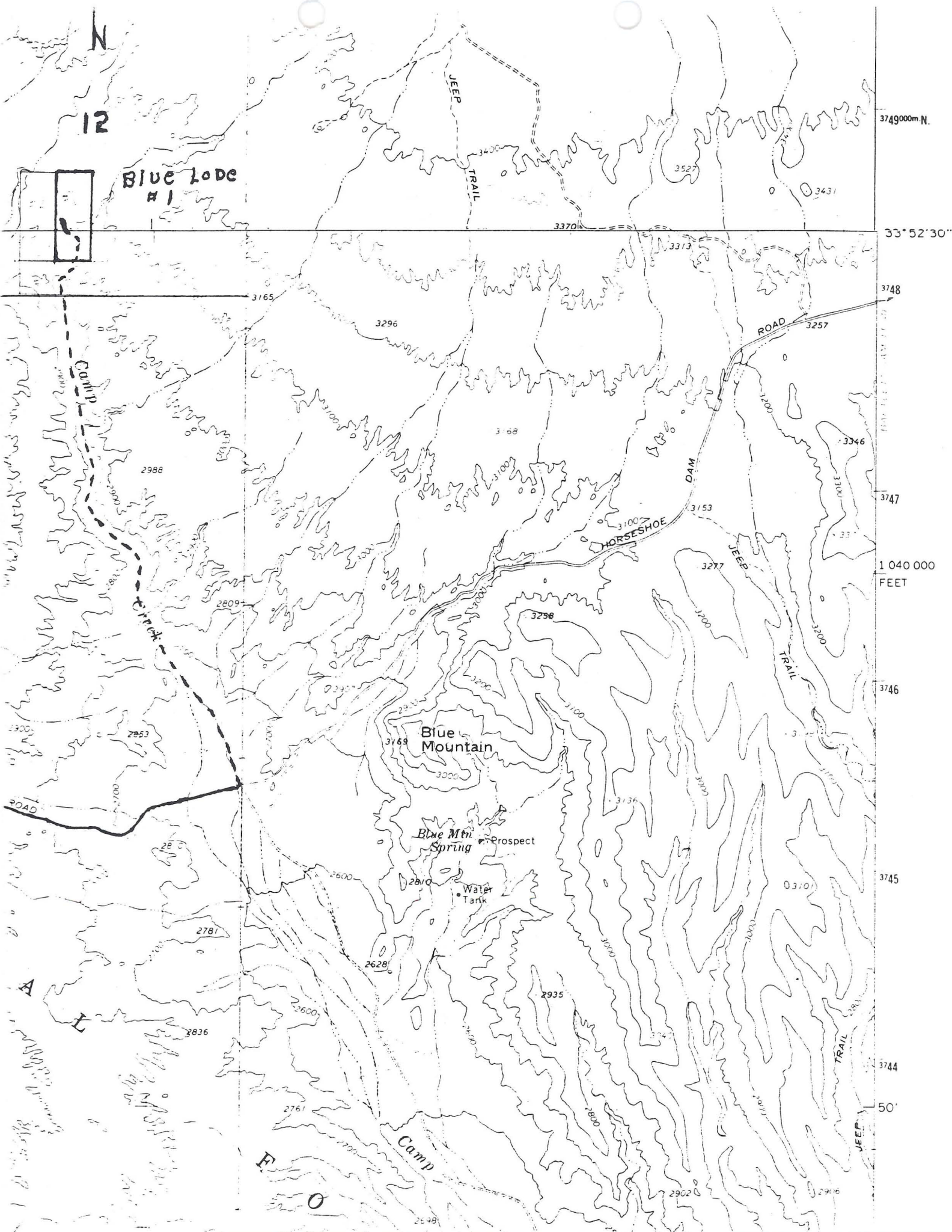
Camp

F

O

A

I



BLUE LODGES # 1-3

FALL 83

#1



#2



BLUE LODES # 1-3

FALL 83

#3



#4



BLUE LODES # 1-3

Fall 83

#5



#6



BLUE LODS # 1-3

FALL 1983

#7



#8



BLUE LODS # 1-3

FALL 83

#9



#10



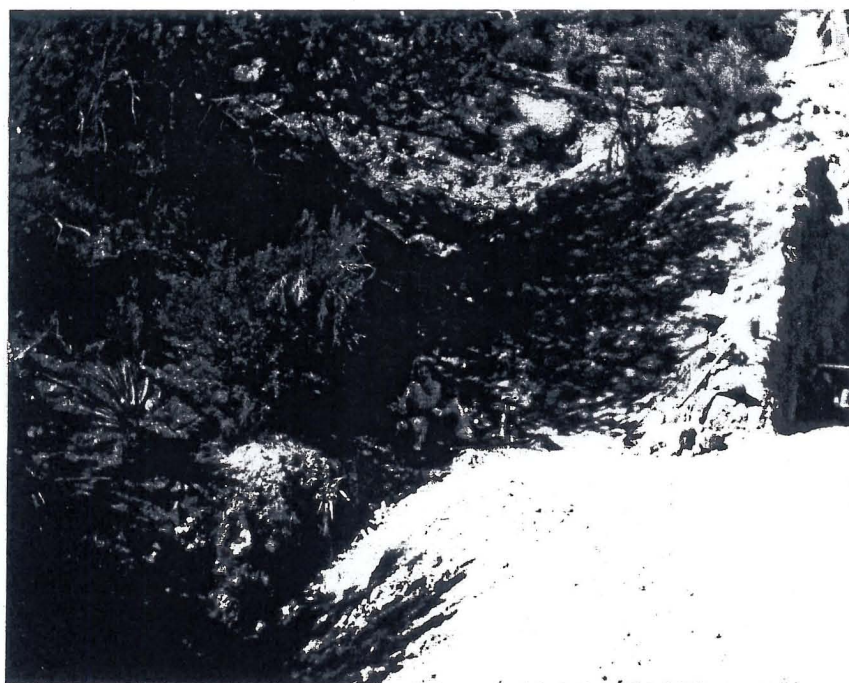
BLUE LODES # 1-3

FALL 83

#11



#12











BLUE LODS # 1-3

#13



PRODUCT IN USE

BLUE LODGE MINE

MARICOPA COUNTY

KAP WR 12/18/87: Brian Falkner reported he has mined and cut a small amount of onyx from his Blue Lodge Mine (file) Maricopa County. He is also continuing to mine his blue rock for decorative and "oil sweep" uses. He said some of the blue rock is competent enough to cut and polish.

BLUE LODS #1-3

Maricopa County

NJN WR 3/15/85: Received bulk samples of fine material from Brian Falkner's Blue Lode Claims (f) Maricopa County to test as a generic kitty litter. Also received for examination drill cuttings from the property to identify the sulfide minerals. Only fine grained pyrite was observed.

NJN WR 5/3/85: Brian Falkner (c) a local prospector brought in two mineral samples for testing and identification. One was a screened waste product from his decorative stone operation on the Blue Lode Claims (f) Maricopa Co. Mr. Falkner wanted the material tested for its suitability as a floor sweep oil absorbent and litty litter. The other sample was a brown clay that Mr. Falkner had found prospecting and discovered it worked as a natural facial clay. Mr. Falkner wanted to know what this material was mineralogically as well as have its potential marketability evaluated. These requests have been complied with and some suggestions as possible ways and places to market the commodities passed along.

KAP WR 10/18/85: Brian Faulkner brought in information on performance bonds and letters of credit required by the Forest Service on mining plans of operation. Mr. Faulkner is required to have a \$2,000 bond or equivalent on operations at his Blue Lode Mine (file) Maricopa County. He hopes to use a certificate of deposit at a bank, but such an instrument will have to be evaluated by Forest Service lawyers to make sure it complies with the regulations.

NJN WR 7/11/86: Bryan Faulkner (card) called and reported he is still mining on the Blue Lode Claims (file) Maricopa County. He is currently selling his decorative stone at \$60 per ton, bagged.

KAP WR 9/4/87: Brian Falkner (Blue Lode Mine - file) Maricopa County was in and reported he is still producing blue rock. He has developed an additional market for the fines produced by screening. He reported that the minus 16 mesh fraction makes excellent oil absorbant. He has been packaging it in 5 gallon pails (which hold 50 pounds) and selling it for 8 cents per pound. His customers are primarily those who are using the product to cleanup oil and grease drippings in parking lots.

BLUE LODGE

MARICOPA COUNTY
CAVE CREEK DISTRICT

KAP WR 10/28/83: Brian Falkner brought in a series of photographs taken at his Blue Lode Mine for the file. He is continuing to mine and market blue specialty stone from his deposit. He sells the material for \$74.80/ton in 50lb plastic bags. He and his wife have moved to the mine site but they can still be contacted at the address and phone numbers in the file.

NJN WR 2/17/84: Brian Falkner reported he drilled next to the basalt dike at his Blue Lode Claims, Maricopa County. 50' was drilled with sulfides reportedly intercepted at 47 feet.

NJN WR 3/16/84: Brian and Dorothy Falkner (c) reported they are negotiating with a party interested in leasing their Blue Lode Claims, Maricopa County, for \$10.00 per ton.

KAP WR 8/3/84: Brian Falkner reported he is going to sink a small exploratory shaft on the site of his Blue Lode Mine (f) where his drill intersected what he described as sulfides. Timbering to collar of a small shaft was discussed.

NJN WR 8/10/84: Bob O'Haire, mineralogist with the Bureau of Geology and Mineral Technology reported that the undersize material (-3/8") sent to him from the Blue Lode, Maricopa County decorative stone operation is mostly crypto-crystalline. Spectrographic analysis indicated a fair amount of magnesium and potassium which along with a petrographic examination led to an identification of the minerals sericite, talc and quartz.

NJN WR 10/19/84: Brian Falkner reported he began sinking his shaft on the Blue Lodes #1-3 (file). Recent rains however, proved his diversion of a local wash inadequate and his shaft is now full of water. Mr. Falkner also reported that for a \$3,000 bond the forest service will allow him to open pit mine his decorative blue stone material.

BLUE LODGE CLAIMS

MARICOPA COUNTY

KAP WR 9/4/81: Brian Falkner reported he has done some limited diamond drilling on his Blue Lode Claims.

KAP WR 7/16/83: Howard Wurtz, U.S. Forest Service Zone Office reported he visited Brian Falkner's Blue Lode 1-3 claims in Camp Creek area. He described the rock "funny green rock" as a possible sericitic altered material. He feels if Falkner can really get \$5.00/100# then he should have a chance to mine. Such material, with a value of \$200/ton is not common stone.

KAP WR 7/16/82: Brian Falkner reported he has a "friendly visit" by the Forest Service to his Blue Lode Claims. He plans to produce uncommon specialty stone. Howard Wurtz, Forest Service Mineral Examiner is apparently in agreement (after a property visit) that the bluish-green stone is uncommon and locatable.

KAP WR 10/1/82: Brian Falkner reported he has received his "plan of operation" for his Blue Lode mine approved by the Forest Service.

NJN WR 5/27/83: Brian Falkner called and reported that in mining his decorative stone, Maricopa County he has come upon vugs and seams of an onyx material that resembles crazy lace agate. The material cuts and polishes well. He will bring in some specimens for the museum's collection. He was referred to Jim Vacek to see if the material can be commercially marketed. Mr. Falkner currently crushes and bags decorative stone with a small plant located at his home in Phoenix. This adds substantial value and marketability to the material. The wholesale price in bags is nearly \$100/ton.

NJN WR 9/2/83: Brian and Dorothy Falkner visited and reported they are still producing decorative stone from their Blue Lode Claims, Maricopa County. They are moving a trailer out to the property to be able to devote more time exploring it for precious metals. They would welcome a visit from the department's staff - both to show them the decorative stone deposit as well as seek guidance in their exploration.

MINE AND PROSPECT FIELD VISIT DATA SUMMARY

Sheet 1 of 2

COMMODITIES Stone, decorativeMILS ID No. Maricopa MILS #696 Date 12/29/83ENGINEER Nyal J. NiemuthINFORMATION FROM: Nyal J. Niemuth & Brian Falkner

PROPERTY SUMMARY

I. MINE NAME Blue Lodes #1-3 (file) OTHER POSSIBLE NAMES
INCLUDING ANY CLAIM NAMES NOTEDII. LOCATION: T 6N R 5E SEC(S) 12 (unsurveyed) MINE DISTRICT Cave Creek
ELEV. 3,000 COUNTY Maricopa TOPO QUAD.DIRECTIONS From road to Horseshoe Dam go north up Camp Creek Wash 2 1/4 miles.MAP ATTACHED In fileIII. OWNERSHIP: NAME Brian Falkner PHONE 943-3665ADDRESS: 9507 N. 12th St. Phoenix, Arizona 85020

COMPANY NAME IF ANY:

PERTINENT PEOPLE

IV. PROPERTY AND HOLDINGS: 3 unpatented mining claims - The Blue LodesV. PAST PRODUCTION - NOTED, KNOWN, PROBABLE, UNKNOWN, NONE NotedVI. CURRENT STATUS: ProducingI. WORKINGS: Workings consist of a couple of open cutsGEOLOGY AND MINERALOGY: DEPOSIT TYPE: See comments

LENGTH: WIDTH: VEIN STRIKE

HOST ROCK: Pink Precambrian granite hosting basaltic neck (Photo #1)ECONOMIC MINERALS: Altered granite. From destruction of mafic minerals and
alteration of feldspars, unusual color makes product distinctiveCOMMENTS: Blue "granite" occurs in series of north striking vertical joints which
are 4-6 feet wide. Zones up to 250' long. Limonite gossan surrounds basaltic
neck seen in Photo #1. (Geologic sketch map attached)EQUIPMENT ON SIGHT: Crusher, screen, ore chute, 2 portable drills, camp trailer
(See photos #3-8)

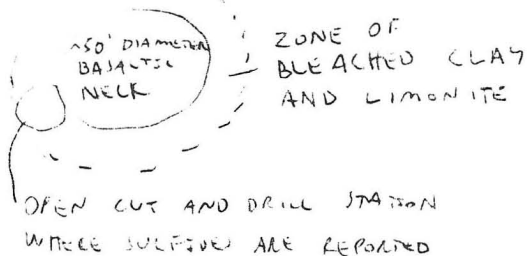
X. SAMPLING: NOTE TYPE IF ANY, DRILLING? See below

XI. REFERENCES AND REMARKS Mr. Falkner has reported sulfides and gold from pit and drill
cuttings adjacent to basalt neck.

BLUE LODE

GEOLOGIC SKETCH MAP

T6N R6E S412
UNSURVEYED



GENERAL AREA OF 4' WIDE ALTERED BLUE ZONES
ON JOINTS IN PINK COARSE GRANITE

CAMP

VEA

WASH

TRIBUTARY OF CAMP CREEK

NOT TO SCALE

NIN

1-84

MINE: Blue Lode Claims

County: Maricopa

Commodity: Specialty Stone

Location: SW $\frac{1}{2}$, Section 12, T6N ^{R5E} ~~E4E~~ (see map)

Holdings: Three unpatented claims on federal minerals in the
Tonto National Forest. AMC #3482 and AMC 15000-15001

Operations: Using hand and portable gasoline equipment Mr. Falkner is drilling, blasting and loading an altered bluish-green rock into a light truck. The material is trucked to his home where it is crushed, screened and bagged for delivery to landscapers. The material has a very uncommon and unique color and pattern and commands a premium price.



Silver Systems Inc.

2114 W. DESERT COVE PHOENIX, ARIZONA 85029
602-861-2138

A 1382

Control #

Name Az. Mineral Resources Date 1-26-84

Address _____

City _____ State _____ Zip _____

ASSAY

MELT

BOTH

OTHER

Type of Material: _____

Assay For: Ag Au Pt Pd Other _____

Date Due: _____ Date Complete: _____

Sample	<u>Ag</u> <u>Au</u> RESULTS		Pt	Pd	Other	Other
Copper Ledge	Tr.	.23				
Blue Mtn.	Nil	Nil				
Falkner						
Blue Lode	.012	Nil				
Osborn	.008	Tr.				

GRAB SAMPLE AT
BASALTIC NECK
NSN 1/84

Assayer Jim Roy

Remarks: _____

TOTAL AMOUNT DUE: \$ _____

I hereby certify that I have the authorization to release the materials listed above for assay and/or melting. I further certify that I hold true and lawful title to all materials listed above and have met all state and federal requirements concerning these.

RELEASED BY: _____

RECEIVED BY: _____

