



CONTACT INFORMATION

Mining Records Curator
Arizona Geological Survey
1520 West Adams St.
Phoenix, AZ 85007
602-771-1601
<http://www.azgs.az.gov>
inquiries@azgs.az.gov

The following file is part of the

Arizona Department of Mines and Mineral Resources Mining Collection

ACCESS STATEMENT

These digitized collections are accessible for purposes of education and research. We have indicated what we know about copyright and rights of privacy, publicity, or trademark. Due to the nature of archival collections, we are not always able to identify this information. We are eager to hear from any rights owners, so that we may obtain accurate information. Upon request, we will remove material from public view while we address a rights issue.

CONSTRAINTS STATEMENT

The Arizona Geological Survey does not claim to control all rights for all materials in its collection. These rights include, but are not limited to: copyright, privacy rights, and cultural protection rights. The User hereby assumes all responsibility for obtaining any rights to use the material in excess of "fair use."

The Survey makes no intellectual property claims to the products created by individual authors in the manuscript collections, except when the author deeded those rights to the Survey or when those authors were employed by the State of Arizona and created intellectual products as a function of their official duties. The Survey does maintain property rights to the physical and digital representations of the works.

QUALITY STATEMENT

The Arizona Geological Survey is not responsible for the accuracy of the records, information, or opinions that may be contained in the files. The Survey collects, catalogs, and archives data on mineral properties regardless of its views of the veracity or accuracy of those data.

07/27/88

ARIZONA DEPARTMENT OF MINES AND MINERAL RESOURCES FILE DATA

PRIMARY NAME: BLACK RANGE

ALTERNATE NAMES:

NELLIE SHAFT
BLACK RANGE EXTENSION

MOHAVE COUNTY MILS NUMBER: 6B

LOCATION: TOWNSHIP 18 N RANGE 20 W SECTION 10 QUARTER SE
LATITUDE: N 34DEG 57MIN 32SEC LONGITUDE: W 114DEG 23MIN 33SEC
TOPO MAP NAME: BOUNDARY CONE - 7.5 MIN

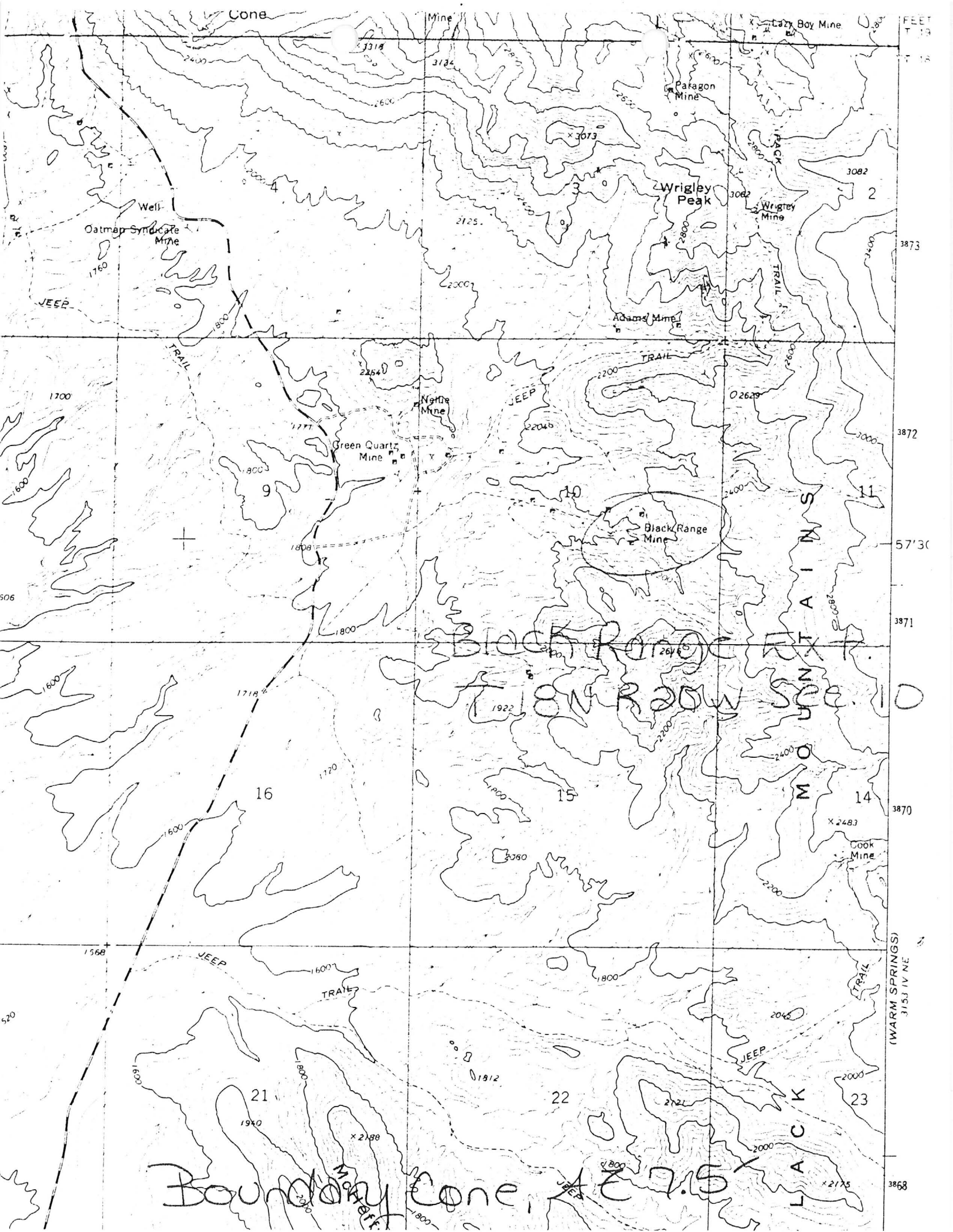
CURRENT STATUS: PAST PRODUCER

COMMODITY:

GOLD LODE

BIBLIOGRAPHY:

ADMMR MOHAVE CUSTOM MILL PROJECT
ADMMR MOHAVE CARD FILE
AZ. STATE MINE INSP. 13TH ANL RPT, P 7, 13
WEED'S MINES HANDBOOK, VOL. XIV, 1920, P 267
AZ. MNG JNL, VOL. NO 24, 5-15-23, P. 20
ADMMR BLACK RANGE FILE



FEET
T 19
T 18
3873
3872
57'30
3871
3870
3868

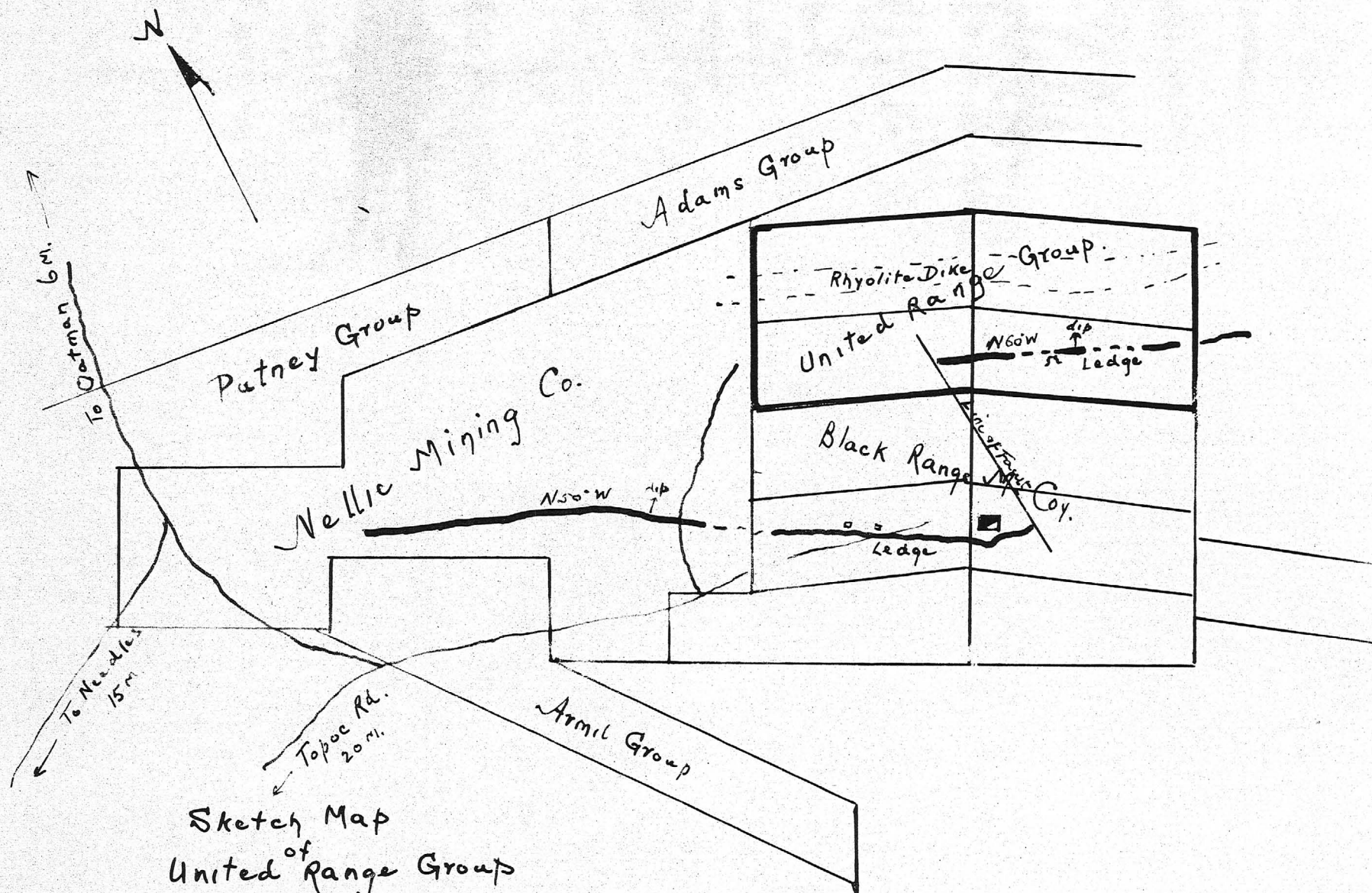
MOUNTAIN S

Black Range EX T.
ON ROAD SEE 10

Boundary Cone, AZ 7.5

WARM SPRINGS
3153 IV NE

----- 11-19-16
The Black Range is working on an old shaft, 150 ft. deep, near the Nellie Encline, and on the same vein, about 800 ft. to the east of the Nellie shaft. Some ore better than \$20 is being encountered.



Sketch Map
 of
 United Range Group
 of Claims,
 San Francisco Mining District
 Mohave County, Arizona.

Scale 1 inch = 1000 feet.

INCORPORATED UNDER THE LAWS OF ARIZONA

Nº 1

THIS CERTIFIES THAT

owner of

CAPITAL STOCK OF

is the
owner of the

United Range Mining Company

OATMAN, ARIZONA

Capital Stock, 1,500,000 Shares—Fully Paid and Non-Assessable

transferable only on the Books of the Corporation in person or by Attorney on
surrender of this Certificate properly endorsed.

In Witness Whereof, the duly authorized officers of the Corporation have hereunto subscribed
their names and caused the corporate Seal to be hereunto affixed.

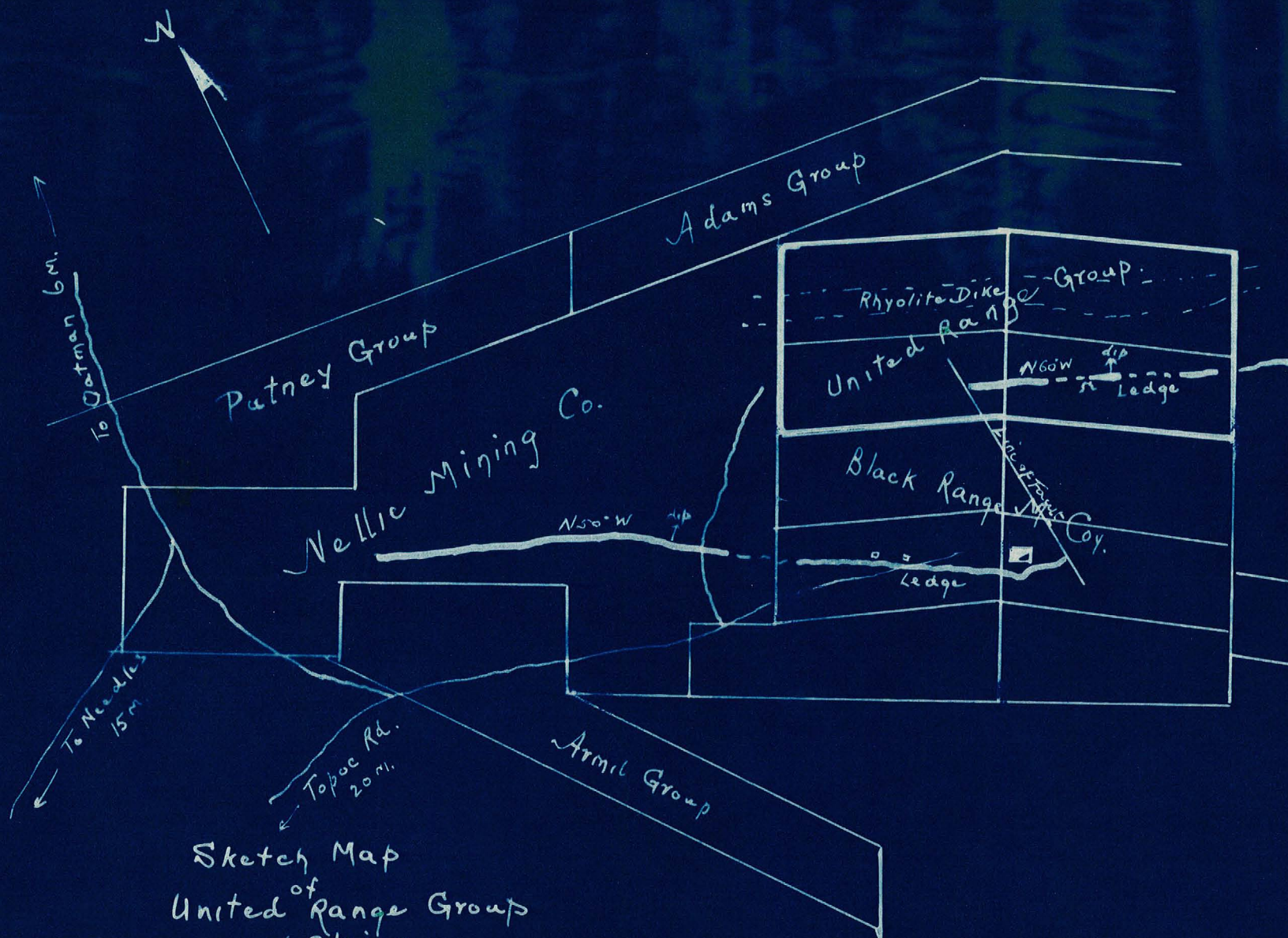
This

day

A.D. 191

SECRETARY

PRESIDENT



Sketch Map
of
United Range Group
of claims.
San Francisco Mining District
Mohave County, Arizona.

Scale 1 inch = 1000 feet.

ARIZONA DEPARTMENT OF MINERAL RESOURCES
MINERAL BUILDING, FAIRGROUNDS
PHOENIX, ARIZONA

August 21, 1958

To the Owner or Operator of the Arizona Mining Property named below:

<u>Black Range (Mohave County)</u>	<u>gold</u>
(Property)	(ore)

ENT OF MINERAL RESOURCES
State of Arizona
eral Building, Fairgrounds
PHOENIX, ARIZONA



to have

complete detail
shipment returns
interest a

Mr. Peter Hleson

Oatman

Arizona

P. Knight

P. KNIGHT,
or.

unknown

Enc: Mine Owner's Report

RE

DEPARTMENT OF MINERAL RESOURCES
STATE OF ARIZONA
FIELD ENGINEERS REPORT

Mine BLACK RANGE

Date April 20, 1955

District SAN FRANCISCO, MOHAVE, COUNTY

Engineer Mark Gemmill

Subject:

This property has been inactive for a number of years - It may be abandoned.

DEPARTMENT OF MINERAL RESOURCES
STATE OF ARIZONA
FIELD ENGINEERS REPORT

Mine BLACK RANGE (3 claims). Date January 4, 1940.
District San Francisco Mining Dist., Mohave Co. Engineer Elgin B. Holt.
Subject: OWNER: Peter Ileson, Oatman, Arizona.

SYNOPSIS REPORT

LOCATION: Property located in the San Francisco Mining Dist., Mohave County a short distance south of Oatman.

VEIN: Main vein is 35 feet wide; strike S. E. & N. W.; dip 60 deg. N. E.

DEV. WORK: Consists of 3 shafts, one of which is sunk on main vein to depth of 180 feet, with a cross-cut 400 feet in length to vein and a drift 100 feet in length on vein, which averages about \$3.00 per ton in gold. Another shaft was sunk to depth of 100 feet on a vein four feet in width, with 50 feet of drifting on vein at bottom, on which level the vein averages \$6.00 per ton in gold, per Mr. Ileson. Another shaft was sunk on same vein to depth of 200 feet. This shaft is caved in.

Property has possibilities that it may develop into a large producer of low grade gold ore and merits examination by anyone looking for a gold prospect of promise.

BLACK RANGE

Au

Mohave

8 - 10

T 19 N, R 20 W

Peter Ileson

'40

R E P O R T
on

UNITED RANGE

GROUP OF CLAIMS.

San Francisco Mining District,

Mohave County,

Arizona.

These claims, consisting of four locations, about eighty acres in extent, are situated five miles South of Oatman, being about two miles Southeast of the Boundary Cone, the well known landmark in this district.

They are bounded on the West by the Nellie Mining Company's property, on the South by the Black Range Mine, and adjoin on the Northwest the Adams Group. A good wagon road leads to the property from Oatman, or from Needles, California, the latter town being some fifteen miles distance.

The claims are held by possessory right, duly recorded.

Geologically the section in which these claims are located presents very similar features to the ore bearing deposits in this district already proven by mines in operation, the later andesites intersected by rhyolite dikes and veins of quartz and calcite being the principal characteristics. Evidence of considerable movement is patent by the presence of large boulders of Trachyte, Basalt and other debris, distributed in great profusion on the Western and Northern portions of the claims.

these boulders having apparently been broken from a strongly marked capping about three-quarters of a mile to the North.

Siliceous material in the form of Geodes, Chalcedony and jasper is found in great quantity over the entire area.

Through the Southerly claims, Nos. 1 and 2, a well defined quartz ledge can be traced for upwards of two thousand feet, being in places twenty feet wide, having the appearance of being deposited by a lateral fault movement, from the enormous ledge now being mined by the Black Range Company. This ledge can be traced by strong outcroppings through the Black Range and Nellie properties but abruptly disappears on its strike at a point about 1500 feet from the Westerly boundary of the Black Range property. The ledge both on the Black Range and on the claims under review maintains a similar strike, being approximately N. 60 W. in both instances.

The fault systems in this district, where demonstrated present precisely similar characteristics to the presumed fault in this ledge, the course of which can only be properly determined by underground exploration. The Tom Reed and the Gold Road ledges both faulted to the North and at the point where this movement was apparent a concentration of high values in the quartz resulted.

The Black Range Mine, from the development already carried out, is proven as a property of great merit, the outcropping of the ledge at or near the point of intersection being over 100 feet wide. A cross-out tunnel some sixty feet

in this outcropping failed to expose the foot-wall and two shafts both over 100 feet deep were sunk entirely in ore, but subsequently abandoned owing to the presence of water. The shaft at present being sunk in the hanging-wall, out through the ledge at about 55 feet, but is being prosecuted to the 300 foot level with the object of cross-cutting to the ledge at that depth. Values in this ledge have been in many instances phenomenal. Free gold in coarse grains is present in the outcropping, and assays up to \$2,000.00 per ton, have been obtained from the surface. In one of the old shafts ore valued at \$1.00 a pound was stated to have been taken out by the early operators. It is generally stated, however, that the ore encountered in the shaft assayed as high as \$25.00 a ton and this is believed to be about the general average of the richer deposits in this section.

Mining can be carried on as cheaply in this location as anywhere in the district. Proximity to Needles, good roads to the property, and adjoining mines in operation all assisting in this direction.

The UNITED RANGE CLAIMS present an opportunity for development with perhaps more promising features than any other prospect in the Oatman field.

E. J. Jacobs

Consulting Engineer.

Oatman, Arizona.

November 20th, 1915.

ED. C. JACOBS
MINING ENGINEER

MINE EXAMINATIONS, REPORTS, SURVEYS
MANAGEMENT OF MINES

OATMAN, ARIZONA.

Feb. 19/19.6

Appendix to Report

I hereby recommend the sinking of a shaft on United Range No 2, at a point near the location work, about 300 feet from the West end line, and then to explore the vein from this point -

The approximate cost of the necessary equipment and of doing the above work would be about Twenty thousand dollars.

E. C. Jacobs
