



CONTACT INFORMATION

Mining Records Curator
Arizona Geological Survey
1520 West Adams St.
Phoenix, AZ 85007
602-771-1601
<http://www.azgs.az.gov>
inquiries@azgs.az.gov

The following file is part of the

Arizona Department of Mines and Mineral Resources Mining Collection

ACCESS STATEMENT

These digitized collections are accessible for purposes of education and research. We have indicated what we know about copyright and rights of privacy, publicity, or trademark. Due to the nature of archival collections, we are not always able to identify this information. We are eager to hear from any rights owners, so that we may obtain accurate information. Upon request, we will remove material from public view while we address a rights issue.

CONSTRAINTS STATEMENT

The Arizona Geological Survey does not claim to control all rights for all materials in its collection. These rights include, but are not limited to: copyright, privacy rights, and cultural protection rights. The User hereby assumes all responsibility for obtaining any rights to use the material in excess of "fair use."

The Survey makes no intellectual property claims to the products created by individual authors in the manuscript collections, except when the author deeded those rights to the Survey or when those authors were employed by the State of Arizona and created intellectual products as a function of their official duties. The Survey does maintain property rights to the physical and digital representations of the works.

QUALITY STATEMENT

The Arizona Geological Survey is not responsible for the accuracy of the records, information, or opinions that may be contained in the files. The Survey collects, catalogs, and archives data on mineral properties regardless of its views of the veracity or accuracy of those data.

12/14/90

ARIZONA DEPARTMENT OF MINES AND MINERAL RESOURCES FILE DATA

PRIMARY NAME: BLACK EAGLE

ALTERNATE NAMES:

AMERICAN UNITED EASTERN MNG.
UNITED AMERICAN

MOHAVE COUNTY MILS NUMBER: 35F

LOCATION: TOWNSHIP 19 N RANGE 20 W SECTION 24 QUARTER SW
LATITUDE: N 35DEG 00MIN 56SEC LONGITUDE: W 114DEG 21MIN 55SEC
TOPO MAP NAME: MOUNT NUTT - 7.5 MIN

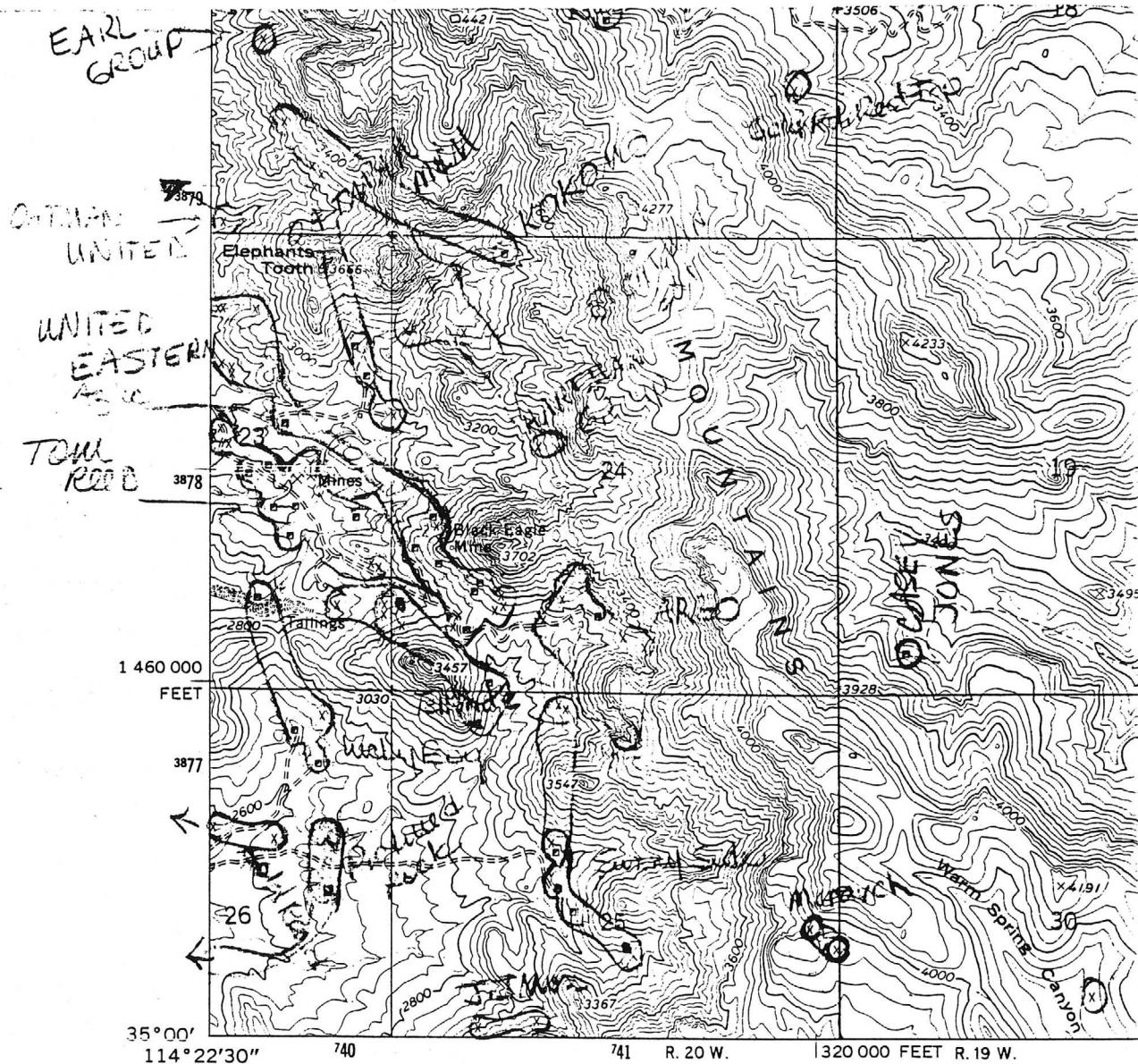
CURRENT STATUS: DEVEL DEPOSIT

COMMODITY:

GOLD LODE

BIBLIOGRAPHY:

ADMMR MOHAVE CARD FILE
RANSOME, F.L. "GEOL. OF OATMAN GOLD DIST, AZ"
USGS BULL 743, MAP, 1923
ADMMR BLACK EAGLE FILE

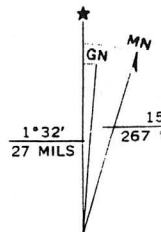


Mapped, edited, and published by the Geological Survey

Control by USGS and USC&GS

Topography by photogrammetric methods from aerial photographs taken 1965. Field checked 1967

Polyconic projection. 1927 North American datum
10,000-foot grid based on Arizona coordinate system, west zone
1000-meter Universal Transverse Mercator grid ticks,
zone 11, shown in blue



UTM GRID AND 1967 MAGNETIC DECLINATION AT CENTER OF

Black Eagle

UNITED AMERICAN

MOHAVE COUNTY

NJN WR 7/15/88: Ken Hodgeson (card) reported that he sold the United American (file) Mohave County to P & G Mining.

R 14

ADDITIONAL REFERENCES

See: ABM Bull. 131, p. 60, 76, Pl. I

Arizona Mining Journal Feb 1920 p. 36
June 1920 p. 28 Aug 1920 p. 21

ABM Bull # 129 p. 84

*Kingman Mining Project
2 plan & maps*

COMPLETE AND MAIL TO:

STATE MINE INSPECTOR
1616 WEST ADAMS, SUITE 411
PHOENIX, ARIZONA 85007-2627

BLACK EAGLE (f) No. 15

FOR OFFICE USE ONLY

START-UP NUMBER 84341174
STATE NUMBER 10185400
MSHA NUMBER 10184910

JUL 15 1988

NOTICE TO ARIZONA STATE MINE INSPECTOR

In compliance with the Arizona Revised Statute Section 27-303, we are submitting this written notice to the Arizona State Mine Inspector of our intent to start ☒ stop ☐ move ☐
(Please check one) a mining operation.

If this is a move, please show last location: _____

If you have not operated a mine previously in Arizona, please check here: ☒ If you want the Education and Training Division to assist with your mine safety training, please check here: ☐

If this operation will use Cyanide for leaching, please check here: ☒

COMPANY NAME: Unity Properties, Inc

DIVISION: _____

MINE OR PLANT NAME: Black Eagle Project TELEPHONE: 768-2404

CHIEF OFFICER: Thomas DeHoff

COMPANY ADDRESS: P.O. Box 6007

CITY: Kingman STATE: AZ ZIP CODE: 86402

MINE OR PLANT LOCATION: (Include county and nearest town, as well as directions for locating property by vehicle: T19N, R20W sections 23+24 GSRBM

1 mile southeast of Oatman, AZ by gravel road, Mohave County

TYPE OF OPERATION: Heap leaching of dumps PRINCIPAL PRODUCT: Au

STARTING DATE: 7-13-88 CLOSING DATE: _____ DURATION: _____

PERSON COMPLETING NOTICE: Thomas DeHoff TITLE: Vice President

DATE NOTICE MAILED TO STATE MINE INSPECTOR: 7-13-88



PIKES PEAK GOLD (F)
UNITED AMERICAN MINING CO. (P)
United - Black Eagle
P & G MINING, INC.

11 C
MINE INSPECTOR
Am
DEC 05 1988
84456312

P.O. Box 840 / Silverton, Colorado 81433 / Phone: 303-387-5592

20816 N. 20th Ave., #8
Phoenix, Arizona 85027
602-582-5243

New
December 2, 1988

Mr. James Matt
Arizona State Mine Inspector
1616 W. Adams, Suite 411
Phoenix, AZ 85007-2627

Dear Mr. Matt:

This is a confirmation of our telephone conversation concerning P&G's exploration and development activities in the State of Arizona.

P&G Mining, Inc. is a Colorado Corporation established in 1980 to explore and mine gold ore from the Sultan Mountain near Silverton, Colorado. During the last few years P&G examined several properties and purchased two in Arizona. P&G plans to work one property at a time on a small scale.

1. PIKES PEAK: (Maricopa/Yavapai Counties) This property is located in the Pikes Peak Mining District in Maricopa and Yavapai Counties approximately 7 miles north of State Highway 74, 5 miles west of Lake Pleasant and about 8 miles southwest of Castle Hot Springs. The property access is through Morgan City Wash just one mile west of the access road to Lake Pleasant. The company plans to do the following:

A. Surface exploration and development work consisting of trenching along the exposed vein (quartz vein) to reach the unfractured portion of the bedrock and producing ore material to be milled possibly at Redtail Mill north of Wickenburg. The purpose of this small operation is to evaluate the ore in detail.

B. If this operation proves successful, a decline is planned to mine the ore from underground all the way to the surface (approximately 100 feet). All the proposed work will be on patented mining claims which P&G owns.

IVE
2. UNITED AMERICAN MINE (Mohave County) The property is located approximately 1½ miles southeast of the Town of Oatman in the San Francisco Mining District, Mohave County, Arizona. No plans to mine this property were made, however, sampling and mapping of the surface and underground should take place in the near future.

Thank you for your cooperation, and I look forward to meeting you.

Sincerely,

Nabil Saweeres
General Manager

MAP SHOWING
RELATIVE LOCATION OF THE
UNITED AMERICAN MINING CO'S
PROPERTY, IN REFERENCE TO PROVEN MINES ON THE
TOM REED VEIN SYSTEM

1036

