



CONTACT INFORMATION

Mining Records Curator
Arizona Geological Survey
1520 West Adams St.
Phoenix, AZ 85007
602-771-1601
<http://www.azgs.az.gov>
inquiries@azgs.az.gov

The following file is part of the

Arizona Department of Mines and Mineral Resources Mining Collection

ACCESS STATEMENT

These digitized collections are accessible for purposes of education and research. We have indicated what we know about copyright and rights of privacy, publicity, or trademark. Due to the nature of archival collections, we are not always able to identify this information. We are eager to hear from any rights owners, so that we may obtain accurate information. Upon request, we will remove material from public view while we address a rights issue.

CONSTRAINTS STATEMENT

The Arizona Geological Survey does not claim to control all rights for all materials in its collection. These rights include, but are not limited to: copyright, privacy rights, and cultural protection rights. The User hereby assumes all responsibility for obtaining any rights to use the material in excess of "fair use."

The Survey makes no intellectual property claims to the products created by individual authors in the manuscript collections, except when the author deeded those rights to the Survey or when those authors were employed by the State of Arizona and created intellectual products as a function of their official duties. The Survey does maintain property rights to the physical and digital representations of the works.

QUALITY STATEMENT

The Arizona Geological Survey is not responsible for the accuracy of the records, information, or opinions that may be contained in the files. The Survey collects, catalogs, and archives data on mineral properties regardless of its views of the veracity or accuracy of those data.

05/04/87

ARIZONA DEPARTMENT OF MINES AND MINERAL RESOURCES FILE DATA

PRIMARY NAME: BLACK CHIEF MANGANESE MINE

ALTERNATE NAMES:

LA PAZ COUNTY MILS NUMBER: 307

LOCATION: TOWNSHIP 7 N RANGE 18 W SECTION 24 QUARTER E2
LATITUDE: N 33DEG 56MIN 13SEC LONGITUDE: W 114DEG 05MIN 15SEC
TOPO MAP NAME: BOUSE - 15 MIN

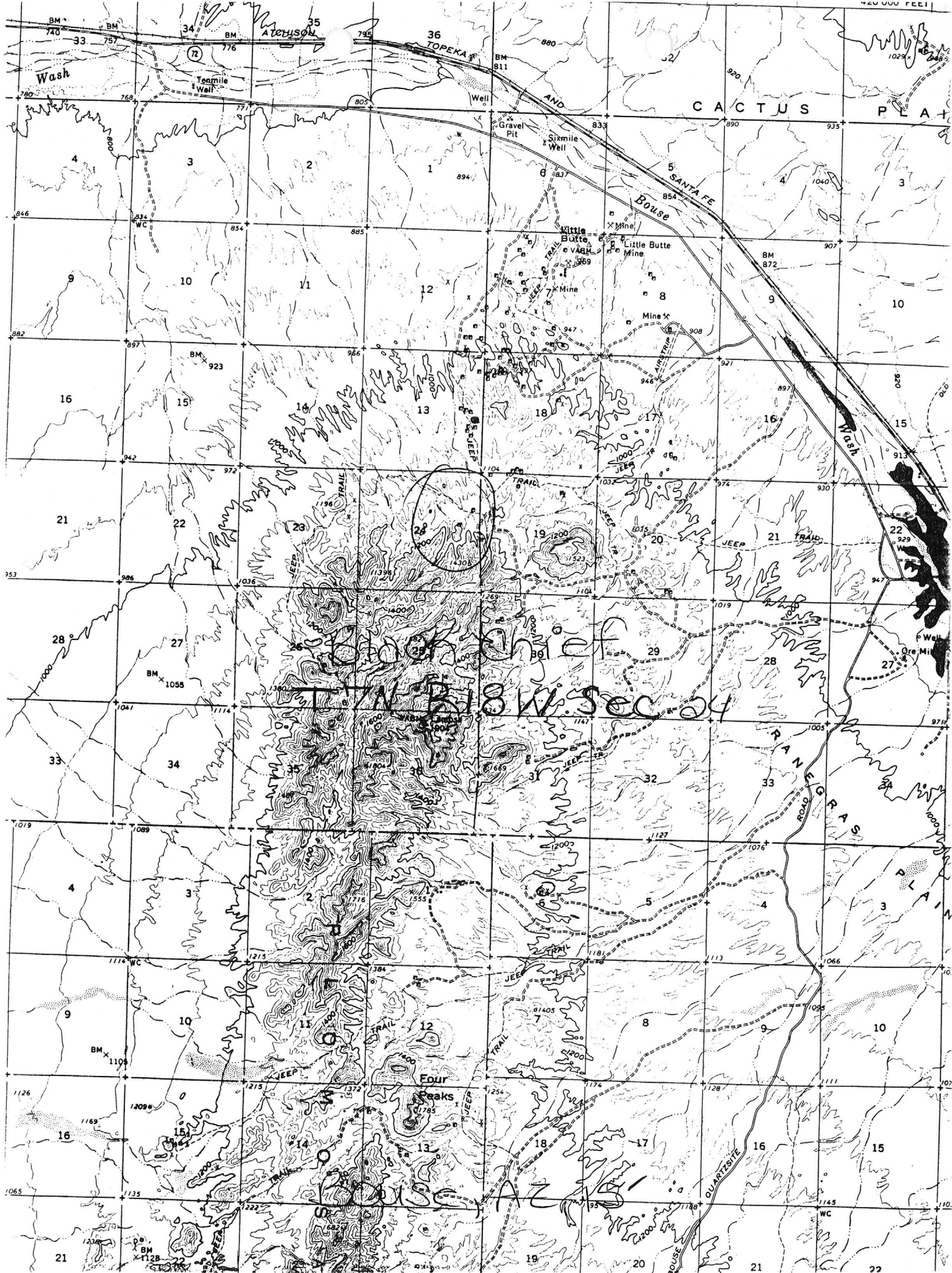
CURRENT STATUS: PAST PRODUCER

COMMODITY:

MANGANESE
IRON

BIBLIOGRAPHY:

KEITH, S.B., 1978, AZBM BULL. 192, P. 167
ADMMR BLACK CHIEF MANGANESE MINE FILE
USBM IC 7843, P. 74
USBM IC 8236, P. 121
SCARBOROUGH, ROBERT - (ADMMR GEOLOGY FILE)



DEPARTMENT OF MINERAL RESOURCES
STATE OF ARIZONA
FIELD ENGINEERS REPORT

Mine Black Chief Manganese Mine
5 miles West of Bouse, Ariz.
District

Date October 8, 1952.

Engineer Geo. F. Reed

Subject: Progress Report.

Mark Gemmill & I visited the property this date. It is reached from Bouse by about five miles of good dirt road. Some work was done treanching, etc., during World War II, and some recently. The present lessees are thinking of shipping about a carload of ore which is mined and piled up on ~~surface~~ surface. They think it might run about 25% manganese. We advised them to ship it to Deming at once in order to get a real estimate on grade of ore. Then they could decide on what to do about starting to mine. There is no equipment on the property. They have no finances and would like to sell their lease, apparently.

Ownership:

Black Chief No. 1, unpatented claim, owned by J.C. Townsend of Bouse, leased to D.R. Harryman & C.A. Clary of Bouse.

Geology:

Several narrow, nearly vertical, more or less parallel breaks contain some manganese oxide, both hard and soft varieties. Wall rock appears to be a fine grained, greenish igneous rock. Manganese surrounds brecciated pieces of wall rock, and in the best looking exposure there is a length of about 75 feet or so opened up that is 2 to 4 feet wide and the operators think will run 25%, more or less. About 75 feet West from the end of this cut, there is a vertical shaft, said to be 50 feet deep (untimbered) that is within 10 or 20 feet of being on ~~strike~~ strike of the vein in the open cut. The ore is nearly vertical.

BLACK CHIEF

LA PAZ COUNTY
T7N R18W Sec 24

MILS Yuma Index #307

Geo. File - Scarborough, Robert, "Field Trip to Northern Plomosa Mtns"

IC 7843, p. 74

IC 8236 p. 121

Bouse, AZ 15' Topo (included in file)