



CONTACT INFORMATION

Mining Records Curator
Arizona Geological Survey
1520 West Adams St.
Phoenix, AZ 85007
602-771-1601
<http://www.azgs.az.gov>
inquiries@azgs.az.gov

The following file is part of the

Arizona Department of Mines and Mineral Resources Mining Collection

ACCESS STATEMENT

These digitized collections are accessible for purposes of education and research. We have indicated what we know about copyright and rights of privacy, publicity, or trademark. Due to the nature of archival collections, we are not always able to identify this information. We are eager to hear from any rights owners, so that we may obtain accurate information. Upon request, we will remove material from public view while we address a rights issue.

CONSTRAINTS STATEMENT

The Arizona Geological Survey does not claim to control all rights for all materials in its collection. These rights include, but are not limited to: copyright, privacy rights, and cultural protection rights. The User hereby assumes all responsibility for obtaining any rights to use the material in excess of "fair use."

The Survey makes no intellectual property claims to the products created by individual authors in the manuscript collections, except when the author deeded those rights to the Survey or when those authors were employed by the State of Arizona and created intellectual products as a function of their official duties. The Survey does maintain property rights to the physical and digital representations of the works.

QUALITY STATEMENT

The Arizona Geological Survey is not responsible for the accuracy of the records, information, or opinions that may be contained in the files. The Survey collects, catalogs, and archives data on mineral properties regardless of its views of the veracity or accuracy of those data.

PRINTED: 12/10/2002

ARIZONA DEPARTMENT OF MINES AND MINERAL RESOURCES AZMILS DATA

PRIMARY NAME: BLACK CANYON MILL

ALTERNATE NAMES:

ARIZONA ZINC PLATERS INC MILL

MARICOPA COUNTY MILS NUMBER: 798

LOCATION: TOWNSHIP 8 N RANGE 2 E SECTION 15 QUARTER NW

LATITUDE: N 34DEG 02MIN 36SEC LONGITUDE: W 112DEG 08MIN 59SEC

TOPO MAP NAME: BLACK CANYON CITY - 7.5 MIN

CURRENT STATUS: PRODUCER

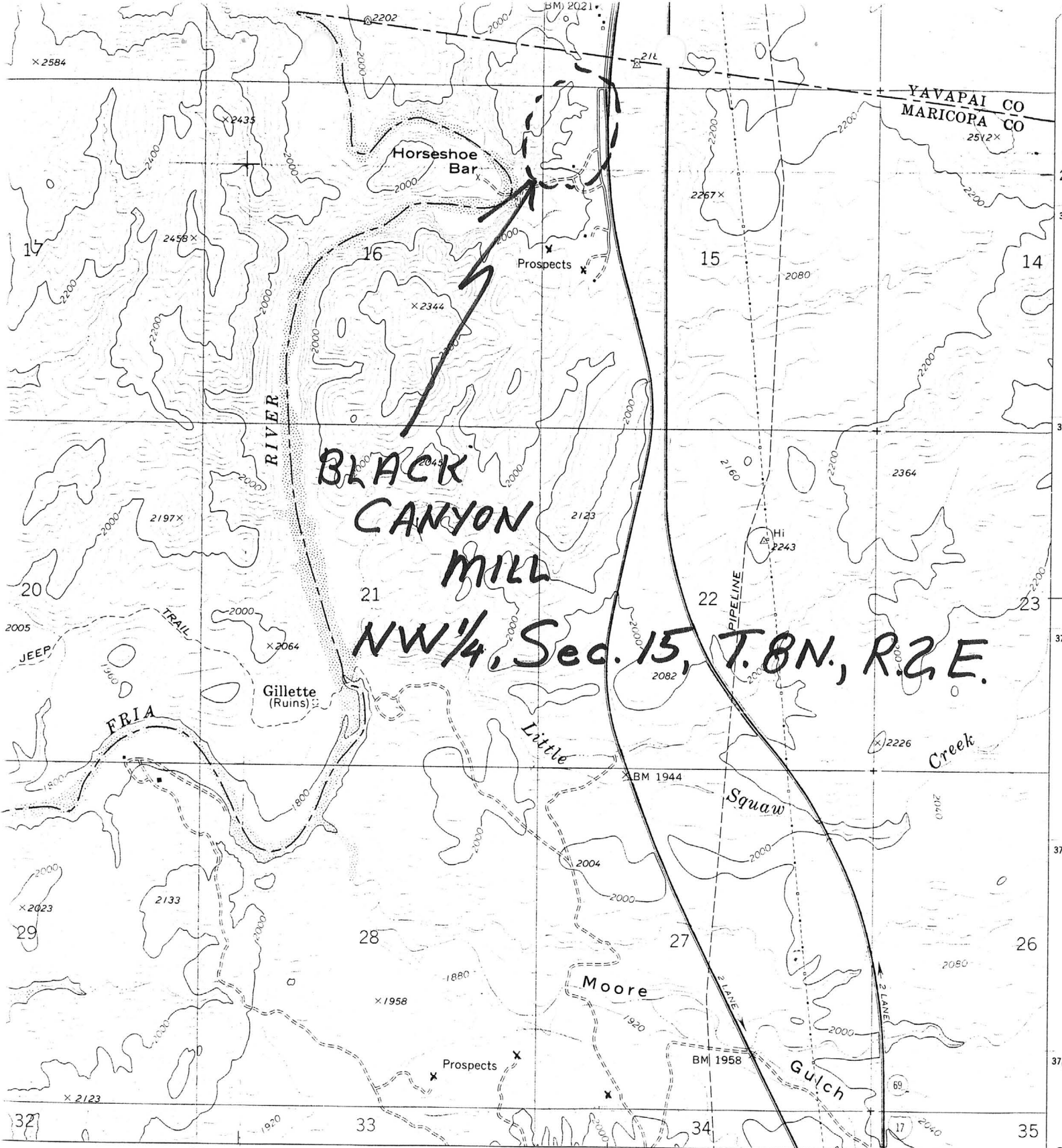
COMMODITY:

MILL GRAVITY

MILL MAGNETIC

BIBLIOGRAPHY:

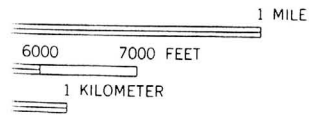
ADMMR BLACK CANYON MILL FILE



INTERIOR—GEOLOGICAL SURVEY, WASHINGTON, D. C.—1973
 NEW RIVER 6 MI. PHOENIX 40 MI. 112°07'3

ROAD CLASSIFICATION

- Primary highway, hard surface _____
- Secondary highway, hard surface _____
- Light-duty road, hard or improved surface _____
- Unimproved road _____
- Interstate Route
- U. S. Route
- State Route



QUADRANGLE LOCATION

BLACK CANYON CITY, ARIZ.

N3400—W11207 5/7 5

Date Printed: 12/08/92

ARIZONA DEPARTMENT OF MINES AND MINERAL RESOURCES

VERBAL INFORMATION SUMMARY

Information from: **Bill Schleisman**

Company: Black Canyon Milling
Address: 117 W. Forest Grove Avenue
City, State ZIP: Phoenix, Arizona 85040
Phone: 602-276-9045

MINE: Black Canyon Mill

ADMMR Mine File: Black Canyon Mill
County: Maricopa
AzMILS Number: 798

SUMMARY

Bill Schleisman is operating the Black Canyon Mill in the NW, Sec 15, T.8N., R.2E. The mill is legally Arizona Zinc Platers, Inc. dba Black Canyon Milling.

The mill is located one half mile south of Rock Springs on the west side of Interstate 17. The company phone is 276-9045 which should be used for all business. An emergency phone is located at the mill; 374-5547. For night time emergencies the phone number is 265-4149.

The mill consists of a Cedar Rapids crusher capable of handling 12" minus raw ore. An impact mill is used to reduce the crusher output to 20 - 60 mesh, impact mill discharge is fed through a wet magnetic separator and on to a rougher and a cleaner table. Fines and table tails are run through a cone concentrator which produces 5 fractions. The mill can be used for small production runs or for test lots. Mr Schleisman rates the plant at 3 tons per hour. The current fee schedule is \$65 per ton with a 5 ton minimum run. Smaller runs are \$135 for the first ton and \$65 per ton for each additional ton.

Ken A. Phillips, Chief Engineer Date: December 7, 1992

MILL - PHX # 374-5547