



CONTACT INFORMATION

Mining Records Curator
Arizona Geological Survey
1520 West Adams St.
Phoenix, AZ 85007
602-771-1601
<http://www.azgs.az.gov>
inquiries@azgs.az.gov

The following file is part of the

Arizona Department of Mines and Mineral Resources Mining Collection

ACCESS STATEMENT

These digitized collections are accessible for purposes of education and research. We have indicated what we know about copyright and rights of privacy, publicity, or trademark. Due to the nature of archival collections, we are not always able to identify this information. We are eager to hear from any rights owners, so that we may obtain accurate information. Upon request, we will remove material from public view while we address a rights issue.

CONSTRAINTS STATEMENT

The Arizona Geological Survey does not claim to control all rights for all materials in its collection. These rights include, but are not limited to: copyright, privacy rights, and cultural protection rights. The User hereby assumes all responsibility for obtaining any rights to use the material in excess of "fair use."

The Survey makes no intellectual property claims to the products created by individual authors in the manuscript collections, except when the author deeded those rights to the Survey or when those authors were employed by the State of Arizona and created intellectual products as a function of their official duties. The Survey does maintain property rights to the physical and digital representations of the works.

QUALITY STATEMENT

The Arizona Geological Survey is not responsible for the accuracy of the records, information, or opinions that may be contained in the files. The Survey collects, catalogs, and archives data on mineral properties regardless of its views of the veracity or accuracy of those data.

07/27/88

ARIZONA DEPARTMENT OF MINES AND MINERAL RESOURCES FILE DATA

PRIMARY NAME: BLACK BIRD

ALTERNATE NAMES:
CANYON STATION

MOHAVE COUNTY MILS NUMBER: 107A

LOCATION: TOWNSHIP 23 N RANGE 17 W SECTION 20 QUARTER SE
LATITUDE: N 35DEG 21MIN 48SEC LONGITUDE: W 114DEG 07MIN 05SEC
TOPO MAP NAME: STOCKTON HILL - 7.5 MIN

CURRENT STATUS: UNKNOWN

COMMODITY:
GRAPHITE

BIBLIOGRAPHY:
ADMMR AZ INDUSTRIAL MINERALS RPT. #2, P 42
ADMMR BLACK BIRD FILE

31 5/8" (NW)
(FLORIDA)

UNITED STATES
DEPARTMENT OF THE INTERIOR
GEOLOGICAL SURVEY

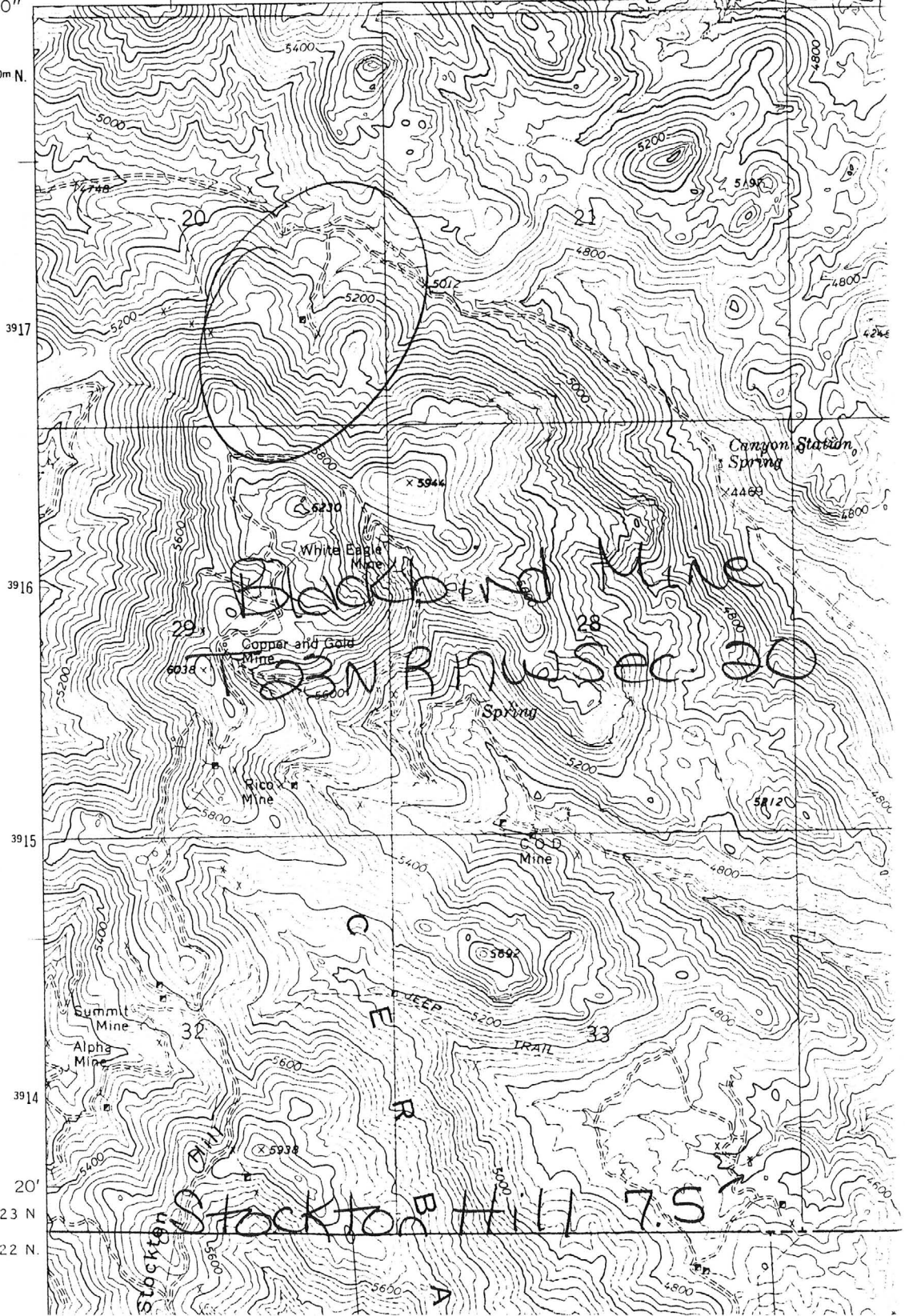
114° 07' 30"
35° 22' 30"

762000m E.

763

764

3918000m N.



DEPARTMENT OF MINERAL RESOURCES
STATE OF ARIZONA
FIELD ENGINEERS REPORT

Mine BLACKBIRD MINE

Date April 20, 1955

District WALLAPAI, MOHAVE COUNTY

Engineer Mark Gemmill

Subject:

Think this property has been abandoned - Could get nothing on it.

13 September 1940

Mr. Victor H. Verity,
Box 2688,
Tucson, Arizona.

My dear Mr. Verity:

With further reference to your request for information regarding graphite deposits, I am enclosing herewith a copy of a Synopsis Report on the BLACKBIRD MINE in the Wallapai District as prepared by Mr. Elgin B. Holt, one of our field engineers.

Trusting that the information contain^{ed} in this report may be helpful to you, I am, with best wishes,

Yours very truly,

J. S. Coupal
Director

DEPARTMENT OF MINERAL RESOURCES
STATE OF ARIZONA
FIELD ENGINEERS REPORT

GRAPHITE

Mine BLACKBIRD (one claim)

Date August 4, 1940.

District Wallapai, Mohave Co.

Engineer Elgin B. Holt

Subject:

SYNOPSIS REPORT

OWNERS: ✓ G. D. Atlee & Lucky Kay, Kingman, Arizona.

METALS: Graphite. ✓

LOCATION: In Canyon Station wash, near Lewis Ranch, on east side of Cerbat mountains, 15 miles by good road from Kingman.

GEOLOGY: Formation granite.

VEINS: There are two veins about 100 feet apart, striking in a north-south direction; dip 75 degrees east. Slope of hill about 41 deg. east. Veins can be opened to depth of 200 feet by a cross-cut tunnel.

LOWER VEIN, which is 10 feet wide, is now opened by an open cut to depth of 10 feet, showing impure graphite in place.

UPPER VEIN was opened years ago by an open cut and short tunnel to depth of 12 or 15 feet. These old workings are caved so badly the exact width of vein could not be determined; but graphite in place, of better quality than found in lower vein, is exposed in top of open cut, indicating that the vein is better than 8 feet wide.

ORE ON Dump: There are about 30 tons of graphite material piled on dump of upper vein, which possibly will run from 25 to 30% graphite.

REMARKS: Samples should be submitted by owners to firms in the market for this material in order to determine if this low grade graphite property could be worked profitably or not. Possibly a high graphite product could be produced by the flotation process. Experiments along this line is recommended.

NOTE to J. S. Coupal, Director: By Parcel Post I am today mailing you a sample of this material for your consideration. If this property could be worked profitably, a considerable tonnage is indicated.


Elgin B. Holt.

8-4-40

Atlee, G. D.
Kingman, Arizona

Box 149

✓ See MB-53 (Blackbird Mine) - Mohave Co.
Re - Field Engineers Report

Kay, Lucky
Kingman, Arizona

Box 803

✓ See MB-53 (Blackbird Mine) - Mohave Co.
Re - Field Engineers Report

8-4-4