



CONTACT INFORMATION

Mining Records Curator
Arizona Geological Survey
1520 West Adams St.
Phoenix, AZ 85007
602-771-1601
<http://www.azgs.az.gov>
inquiries@azgs.az.gov

The following file is part of the

Arizona Department of Mines and Mineral Resources Mining Collection

ACCESS STATEMENT

These digitized collections are accessible for purposes of education and research. We have indicated what we know about copyright and rights of privacy, publicity, or trademark. Due to the nature of archival collections, we are not always able to identify this information. We are eager to hear from any rights owners, so that we may obtain accurate information. Upon request, we will remove material from public view while we address a rights issue.

CONSTRAINTS STATEMENT

The Arizona Geological Survey does not claim to control all rights for all materials in its collection. These rights include, but are not limited to: copyright, privacy rights, and cultural protection rights. The User hereby assumes all responsibility for obtaining any rights to use the material in excess of "fair use."

The Survey makes no intellectual property claims to the products created by individual authors in the manuscript collections, except when the author deeded those rights to the Survey or when those authors were employed by the State of Arizona and created intellectual products as a function of their official duties. The Survey does maintain property rights to the physical and digital representations of the works.

QUALITY STATEMENT

The Arizona Geological Survey is not responsible for the accuracy of the records, information, or opinions that may be contained in the files. The Survey collects, catalogs, and archives data on mineral properties regardless of its views of the veracity or accuracy of those data.

PRINTED: 05-13-2008

ARIZONA DEPARTMENT OF MINES AND MINERAL RESOURCES AZMILS DATA

PRIMARY NAME: BLACK BEAR CLAIMS

ALTERNATE NAMES:

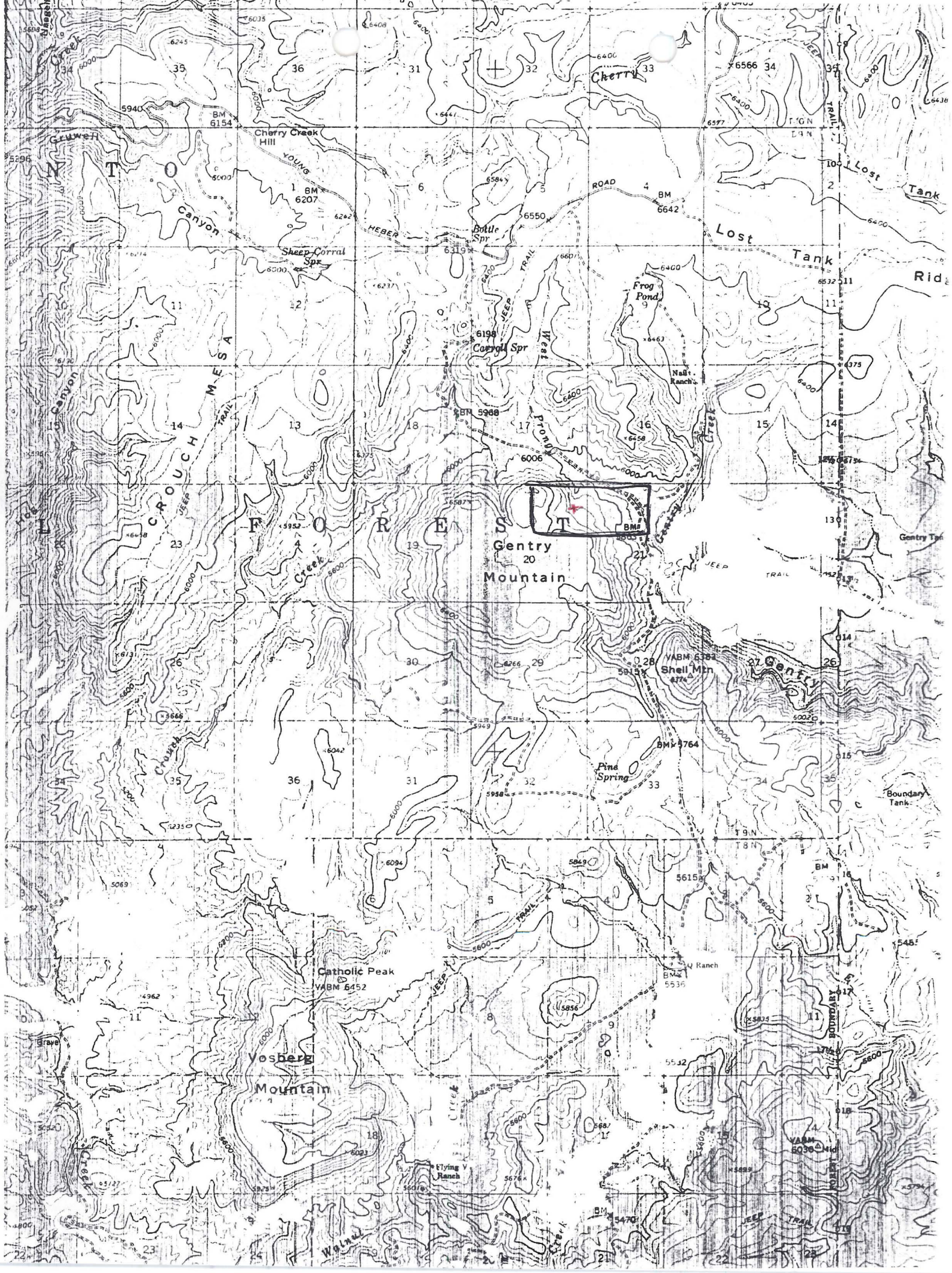
GILA COUNTY MILS NUMBER: 564

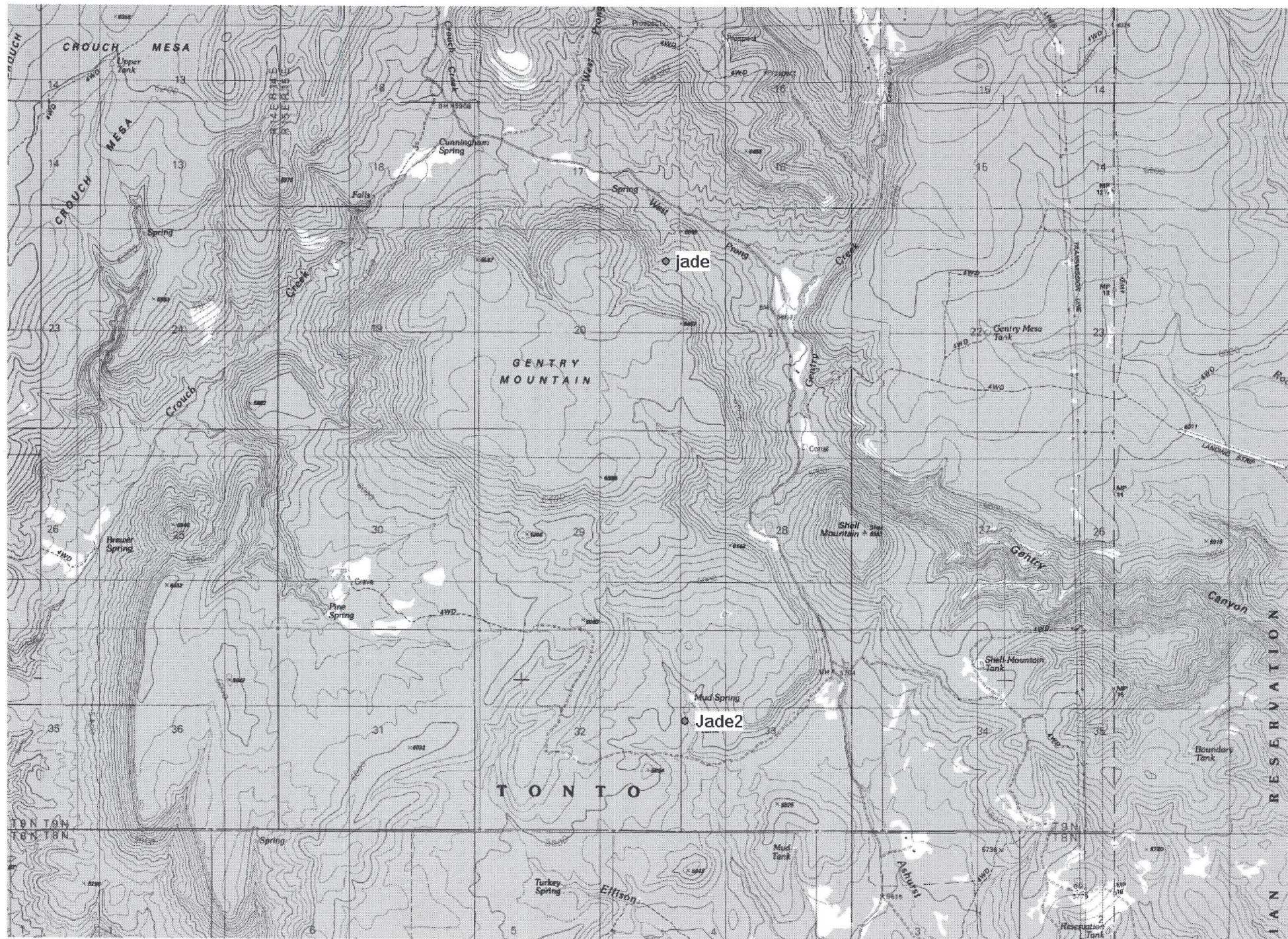
LOCATION: TOWNSHIP 9 N RANGE 15 E SECTION 20 QUARTER NE
LATITUDE: N 34DEG 07MIN 40SEC LONGITUDE: W 110DEG 49MIN 11SEC
TOPO MAP NAME: YOUNG - 15 MIN

CURRENT STATUS: RAW PROSPECT

COMMODITY:
GEMSTONE JADE

BIBLIOGRAPHY:
ADMMR BLACK BEAR CLAIMS FILE
ALSO IN SEC 21 NW





There are several outcrops of Nephrite. The best is exposed in the bottom of the wash just south of mudspring (Jade 2), per Frank Kimbler AdmNR

BLACK BEAR CLAIMS

GILA COUNTY

KAP WR 4/23/82: Dave Rabb and then later Bob O'Haire of the Arizona Bureau of Geology & Mineral Technology reported on the "jade" samples of Lee Hammons submitted by John Jett. The material, he reported, is a low-poor quality nephrite. Further, it has been previously verified as nephrite by X-ray. It also contains some other mineral substances. John White of the Smithsonian independently checked the material and also reported some nephrite.

11/20/82: On this date the following address was reported: Black Bear Corporation; Lee Hammons, President, Box 34306, Phoenix, Arizona 85067. Phone 265-9981.

ARIZONA DEPARTMENT OF MINES AND MINERAL RESOURCES

INFORMATION FROM MINE CARDS IN MUSEUM

ARIZONA

GILA COUNTY

MM 9232 Nephrite Jade

YOUNG
BLACK BEAR CLAIMS

MILS # 564

1-AKA

BLACK BEAR CLAIMS (file)

Black Bear #1-3 -
9N 15E 20 NE - (#1)
~~19N R15E 21 NW (2 & 3)~~

BLACK BEAR #1-3

Lee Hommons

Albert Cline

4309 E Wore

Tucson

85711

#1 - 9N 15E 20 NE -

#2 - 9N 15E 20 NE

21 NW

#3 9N 15E 21 NW

Young topo

7 mi E of Young Az

for 37
update - 85555