



CONTACT INFORMATION

Mining Records Curator
Arizona Geological Survey
1520 West Adams St.
Phoenix, AZ 85007
602-771-1601
<http://www.azgs.az.gov>
inquiries@azgs.az.gov

The following file is part of the

Arizona Department of Mines and Mineral Resources Mining Collection

ACCESS STATEMENT

These digitized collections are accessible for purposes of education and research. We have indicated what we know about copyright and rights of privacy, publicity, or trademark. Due to the nature of archival collections, we are not always able to identify this information. We are eager to hear from any rights owners, so that we may obtain accurate information. Upon request, we will remove material from public view while we address a rights issue.

CONSTRAINTS STATEMENT

The Arizona Geological Survey does not claim to control all rights for all materials in its collection. These rights include, but are not limited to: copyright, privacy rights, and cultural protection rights. The User hereby assumes all responsibility for obtaining any rights to use the material in excess of "fair use."

The Survey makes no intellectual property claims to the products created by individual authors in the manuscript collections, except when the author deeded those rights to the Survey or when those authors were employed by the State of Arizona and created intellectual products as a function of their official duties. The Survey does maintain property rights to the physical and digital representations of the works.

QUALITY STATEMENT

The Arizona Geological Survey is not responsible for the accuracy of the records, information, or opinions that may be contained in the files. The Survey collects, catalogs, and archives data on mineral properties regardless of its views of the veracity or accuracy of those data.

PRINTED: 04/30/2001

ARIZONA DEPARTMENT OF MINES AND MINERAL RESOURCES AZMILS DATA

PRIMARY NAME: BIRCHFIELD FELDSPAR

ALTERNATE NAMES:

YAVAPAI COUNTY MILS NUMBER: 308

LOCATION: TOWNSHIP 8 N RANGE 5 W SECTION 21 QUARTER N2
LATITUDE: N 34DEG 01MIN 28SEC LONGITUDE: W 112DEG 46MIN 50SEC
TOPO MAP NAME: FLORES - 7.5 MIN

CURRENT STATUS: RAW PROSPECT

COMMODITY:

FELDSPAR
MICA

BIBLIOGRAPHY:

ADMMR BIRCHFIELD FELDSPAR MICA MINE FILE

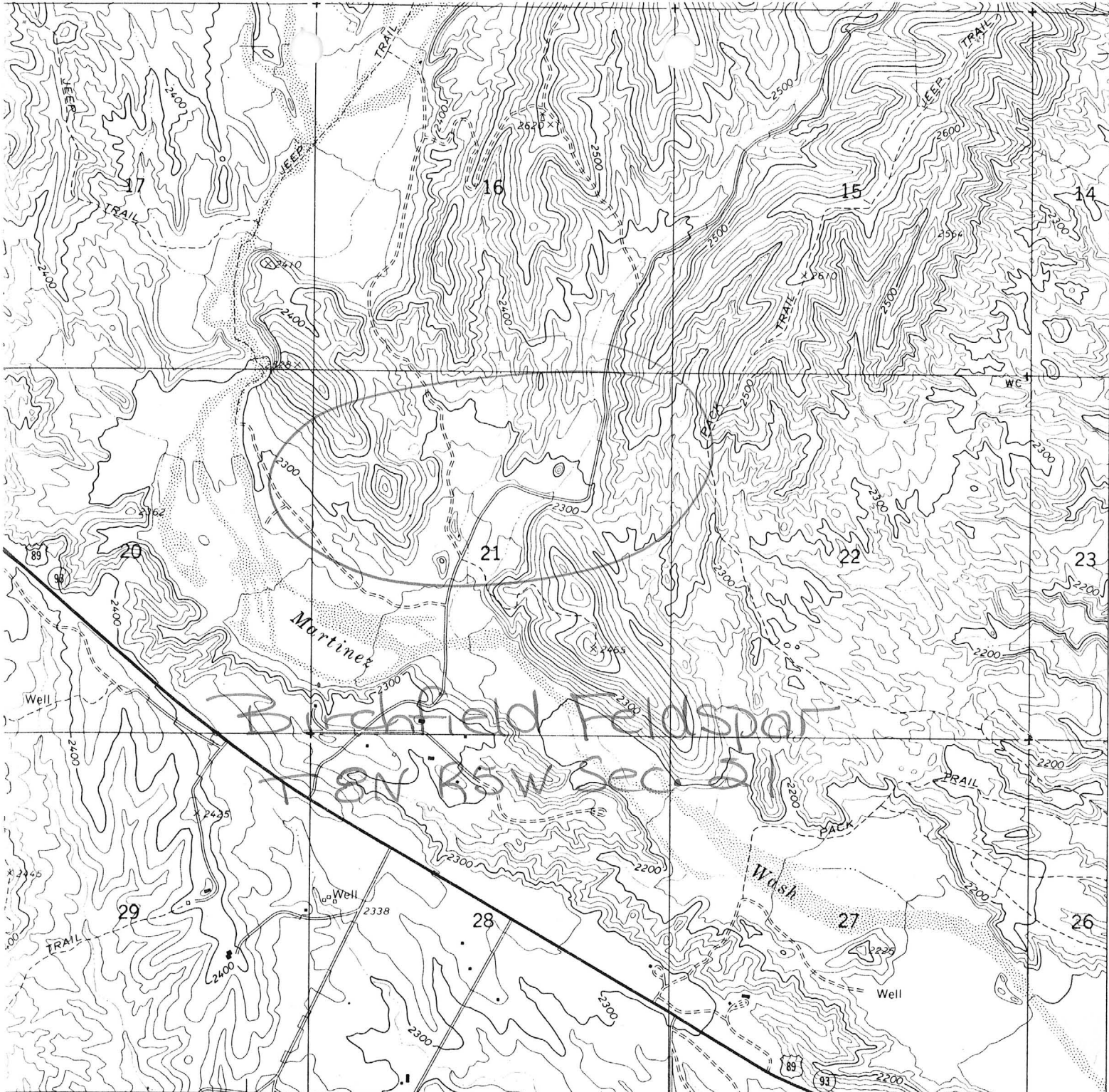
BIRCHFIELD (BURCHFIELD) FELDSPAR MINE

REFERENCES

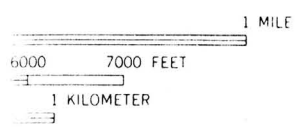
YAVAPAI COUNTY
SAN DOMINGO DIST.
T8N R5W Sec. 21

Yavapai County MILS Index #308

Flores, AZ 7.5' Topo (included in file)



334 47'30" 335 336 338000m E 112°



INTERIOR—GEOLOGICAL SURVEY, WASHINGTON D C—1972
 WICKENBURG 3.2 MI.
 PHOENIX 57 MI.

ROAD CLASSIFICATION

Primary highway, hard surface	—————	Light-duty road, hard or improved surface	—————
Secondary highway, hard surface	—————	Unimproved road	-----
○ Interstate Route	○ U. S. Route	○ State Route	

DARDS
 WASHINGTON, D. C. 20242
 BLE ON REQUEST

FLORES, ARIZ.
 N3400—W11245/7.5

DEPARTMENT OF MINERAL RESOURCES

STATE OF ARIZONA

FIELD ENGINEERS REPORT

Mine **Birchfield Feldspar Mine**

Date **November 12, 1957**

District **San Domingo, Yavapai County**

Engineer **Lewis A. Smith**

Subject:

Location: **Sec. 21 T8N R5W**
Five miles north of Wickenburg, Blue Tank District, across the Hassayampa River from the Mohave Mill.

Development: **Several Cuts**

Claims: **4 Unpatented**

Geology **According to the owner the deposit is composed of pegmatite dike containing feldspar, quartz, a little tourmaline and spectrographic indications of nickel, titanium cobalt tungsten, and molybdenite. Books of mica are found locally. The overall length of the dike is unknown, even though it is exposed in local outcrops over a distance of several hundred feet. A good road is available.**

Recommendations: **It was suggest that a 25 pound sample be sent to the Arizona Bureau of mines for analysis and evaluation of the feldspar grade. Quotations on book mica will be sent to them as well as a list of feldspar buyers.**