



CONTACT INFORMATION

Mining Records Curator
Arizona Geological Survey
1520 West Adams St.
Phoenix, AZ 85007
602-771-1601
<http://www.azgs.az.gov>
inquiries@azgs.az.gov

The following file is part of the

Arizona Department of Mines and Mineral Resources Mining Collection

ACCESS STATEMENT

These digitized collections are accessible for purposes of education and research. We have indicated what we know about copyright and rights of privacy, publicity, or trademark. Due to the nature of archival collections, we are not always able to identify this information. We are eager to hear from any rights owners, so that we may obtain accurate information. Upon request, we will remove material from public view while we address a rights issue.

CONSTRAINTS STATEMENT

The Arizona Geological Survey does not claim to control all rights for all materials in its collection. These rights include, but are not limited to: copyright, privacy rights, and cultural protection rights. The User hereby assumes all responsibility for obtaining any rights to use the material in excess of "fair use."

The Survey makes no intellectual property claims to the products created by individual authors in the manuscript collections, except when the author deeded those rights to the Survey or when those authors were employed by the State of Arizona and created intellectual products as a function of their official duties. The Survey does maintain property rights to the physical and digital representations of the works.

QUALITY STATEMENT

The Arizona Geological Survey is not responsible for the accuracy of the records, information, or opinions that may be contained in the files. The Survey collects, catalogs, and archives data on mineral properties regardless of its views of the veracity or accuracy of those data.

PRINTED: 11-14-2006

ARIZONA DEPARTMENT OF MINES AND MINERAL RESOURCES AZMILS DATA

PRIMARY NAME: BILLY BOY & CHRISTMAS GROUP

ALTERNATE NAMES:

YAVAPAI COUNTY MILS NUMBER: 242B

LOCATION: TOWNSHIP 12.5N RANGE 3 W SECTION 36 QUARTER N2
LATITUDE: N 34DEG 25MIN 35SEC LONGITUDE: W 112DEG 31MIN 29SEC
TOPO MAP NAME: WILHOIT - 7.5 MIN

CURRENT STATUS: DEVEL DEPOSIT

COMMODITY:

GOLD
SILVER
LEAD
COPPER SULFIDE
COPPER OXIDE

BIBLIOGRAPHY:

BLM MINING DISTRICT SHEET 266
BLM MINERAL SURVEY MS 2827 AND MS 2911
ADMMR BILLY BOY AND CHRISTMAS GROUP FILE
WEED, W.H. THE MINES HANDBOOK VOL XIII 1918
P 511
YAVAPAI MAGAZINE MAY 1918 P 5

BILLY BOY GROUP AND CHRISTMAS GROUP

REFERENCES

YAVAPAI COUNTY
HASSAYAMPA DIST.
T12.5N R3W Se.c 36

Yavapai County MILS Index #242B

BLM Mining Dist. Sheet 266

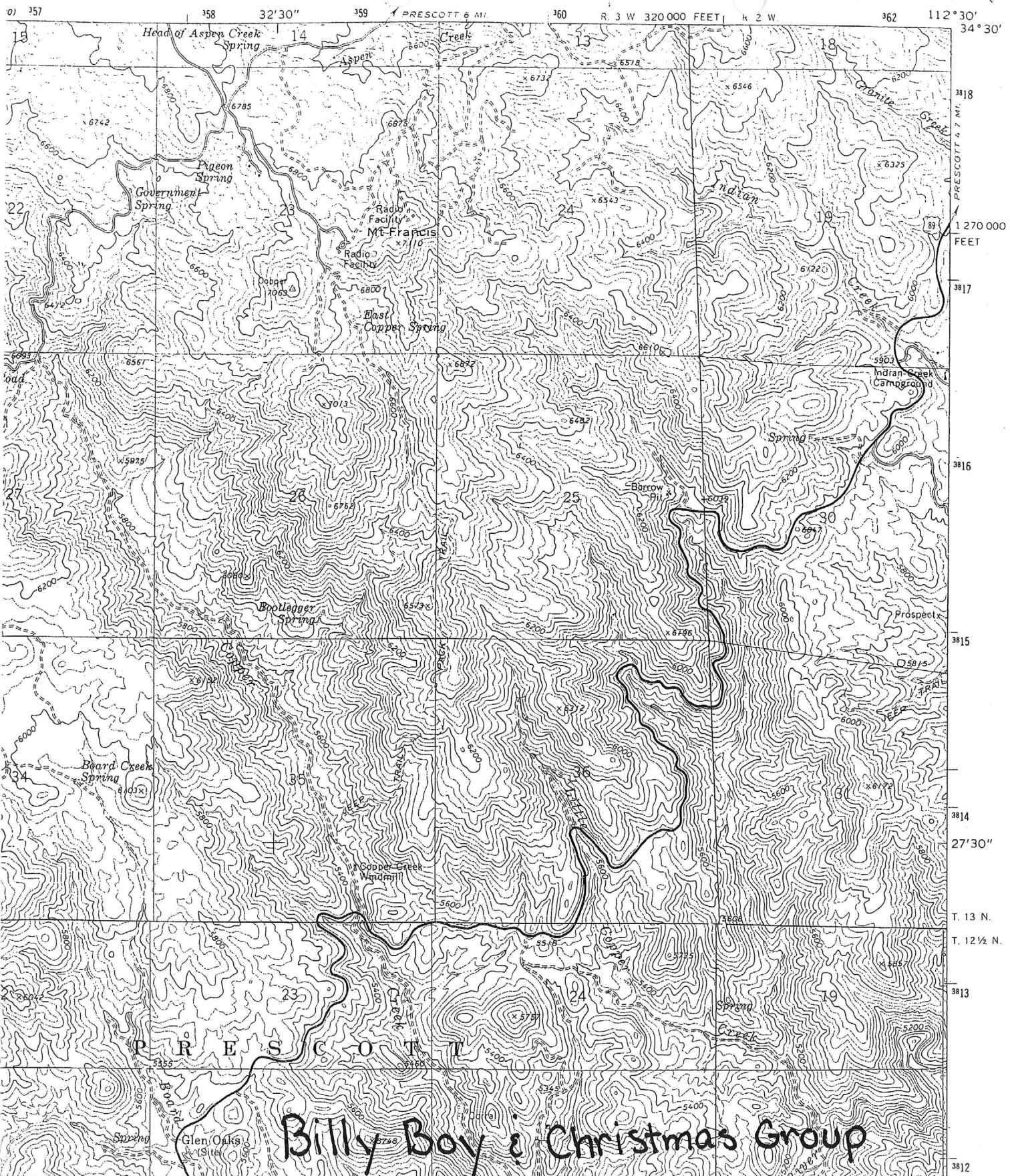
BLM Plats 2827 and 2911

The Mines Handbook Vol. XIII, 1918, p. 511

Yavapai Magazine May 1918, p. 5

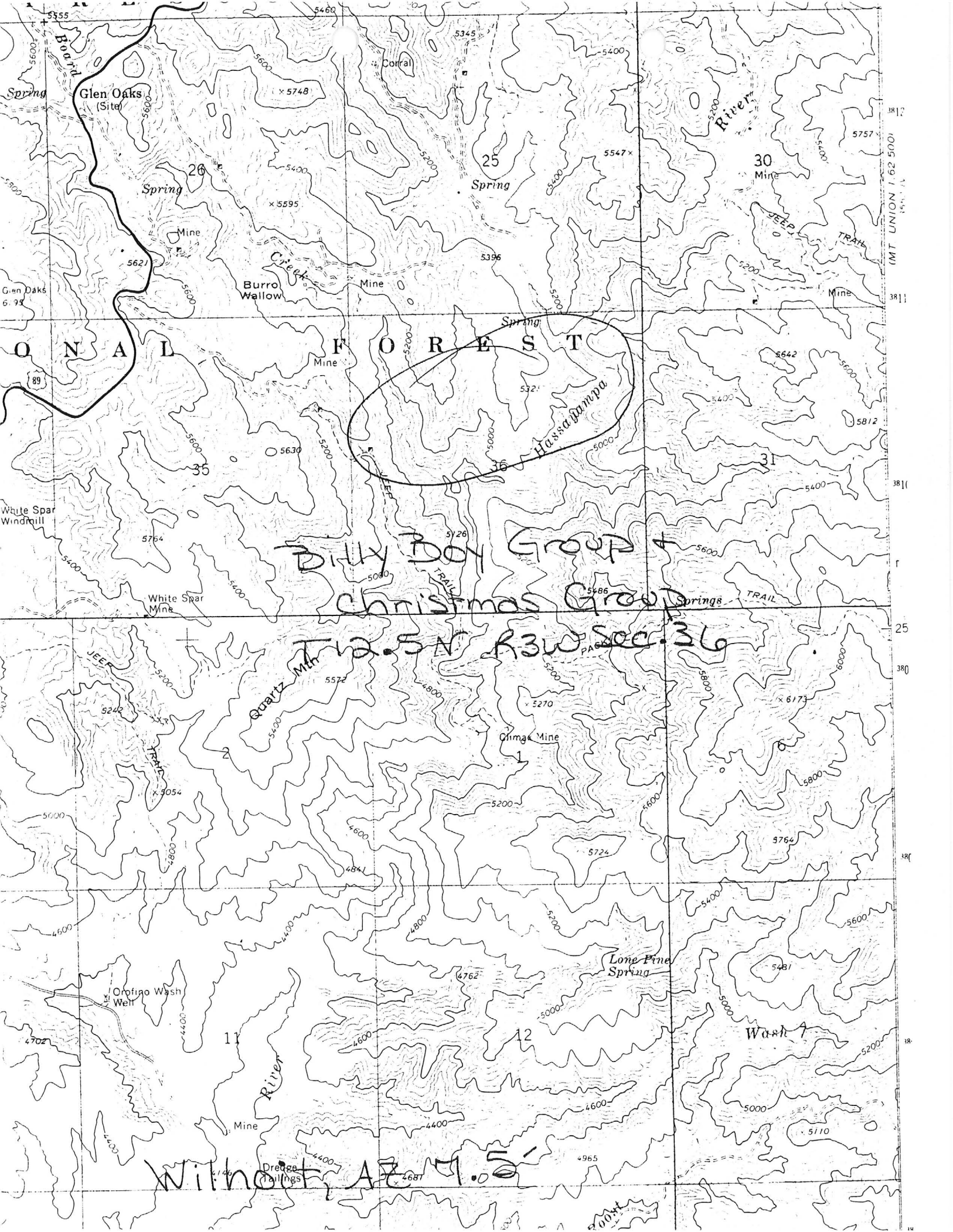
Wilhoit, AZ 7.5' Topo (included in file)

3533 M SW
(PRESCOTT)



WILHOIT - 7.5 MIN

WILHOIT - 7.5 MIN



ONALFOREST

Billy Boy Group
Christmas Group

Twp. 5N R3W Sec. 36

Wilhoit AZ M. 51

MT UNION 1:62 500'

3812

3811

3811

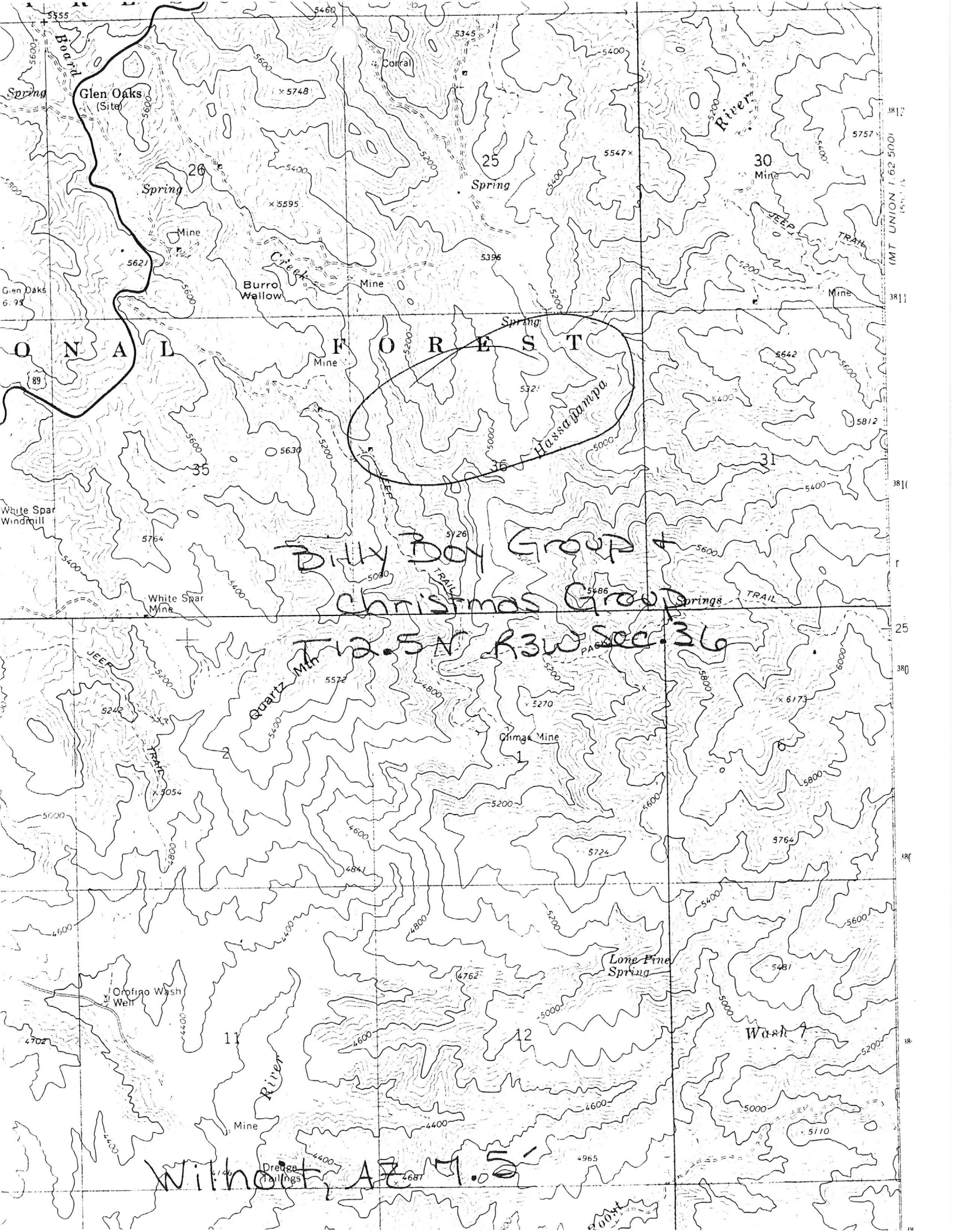
25

380

380

38

14



ARIZONA DEPARTMENT OF MINES AND MINERAL RESOURCES AZMILS DATA

PRIMARY NAME: BILLY BOY & CHRISTMAS GROUP

ALTERNATE NAMES:

YAVAPAI COUNTY MILS NUMBER: 242B

LOCATION: TOWNSHIP 12.5N RANGE 3 W SECTION 36 QUARTER N2
LATITUDE: N 34DEG 25MIN 35SEC LONGITUDE: W 112DEG 31MIN 29SEC
TOPO MAP NAME: WILHOIT - 7.5 MIN

CURRENT STATUS: DEVEL DEPOSIT

COMMODITY:

GOLD

SILVER

LEAD

COPPER SULFIDE

COPPER OXIDE

BIBLIOGRAPHY:

BLM MINING DISTRICT SHEET 266

BLM MINERAL SURVEY MS 2827 AND MS 2911

ADMMR BILLY BOY AND CHRISTMAS GROUP FILE

WEED, W.H. THE MINES HANDBOOK VOL XIII 1918

P 511

YAVAPAI MAGAZINE MAY 1918 P 5

DEPARTMENT OF MINERAL RESOURCES
STATE OF ARIZONA
FIELD ENGINEERS REPORT

Mine BILLY BOY MINE

Date April 20, 1955

District HASSAYAMPA, YAVAPAI COUNTY

Engineer Mark Gemmill

Subject:

The property is still owned by Mr. Block - He has done some little exploration work at various times. Attempts to dispose of the property have been unsuccessful.

DEPARTMENT OF MINERAL RESOURCES
STATE OF ARIZONA
304 HOME BUILDERS BUILDING
PHOENIX, ARIZONA

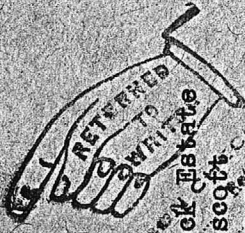
Account

*507 Home Builders Bldg
Phoenix
Arizona*



*Do not
pay for the
return
of the
check*

BK



REASON
RETURNED
TO
WRITER
Undelivered
to
Unborn Block Estate
For better
Prescott, Ariz.
Moved to
Arizona
No such
office in state

Billy Boy

DEPARTMENT OF MINERAL RESOURCES
STATE OF ARIZONA
304 HOME BUILDERS BUILDING
PHOENIX, ARIZONA



*Do not
pay for the
return
of the
check*



REASON
RETURNED
TO
WRITER
Undelivered
to
Mr. Harold H. Block
Moved to
Prescott, Ariz.
No such
office in state

Block

MB-48

DEPARTMENT OF MINERAL RESOURCES
STATE OF ARIZONA
OWNERS MINE REPORT

Date June 24, 1939

1. Mine Billy Boy ✓
2. Mining District & County Hassayampa
3. Former name None
4. Location 15 miles south of Prescott
5. Owner ✓ Block Estate
6. Address (Owner) c/o Harold H. Block
507 Hassayampa Drive, Prescott, Ariz.
7. Operator ✓ Harold H. Block ✓
8. Address (Operator) "
9. President
10. Gen. Mgr.
11. Mine Supt.
12. Mill Supt.
13. Principal Metals ✓ Gold, Silver ✓
14. Men Employed None
15. Production Rate None
16. Mill: Type & Cap. Small test mill
17. Power: Amt. & Type Gasoline power for test mill
18. Operations: Present Exploration, development, geological studies. Mill testing.
19. Operations Planned Nothing definite
20. Number Claims, Title, etc. Five patented claims owned by Block Estate
21. Description: Topography & Geography Rather rugged topography, draining to Hassayampa Creek which traverses property. Near granite contact, in formation similar to Crook complex. Two major faults with accessory faults--ore appears as replacement and filling. Two periods of mineralization--one producing ore. Localized post mineral movement in old shear zone with no subsequent valuable mineralization. Definite relationship between ore, local wall rock, changes in direction of strike.
22. Mine Workings: Amt. & Condition About 750 feet of underground workings, mainly open for examination.

Geology & Mineralization Complicated by numerous small bodies of different rocks. Complexity possibly caused by failure of crust and "stoping". Unoxidized ores consist of quartz gangue, some lime, and sulphides of iron, copper, lead, zinc, bearing gold and silver in variable ratio and grade.

Ore: Positive & Probable, Ore Dumps, Tailings Widely distributed mineralization, but small ore shoots. No developed ore, but innumerable "showings".

Mine, Mill Equipment & Flow Sheet Test mill only

Road Conditions, Route 13 miles S. from Prescott on U.S.89. 1.6 miles down Climax road, rough, rocky, steep, passable but not safe for low clearance automobiles. Thence one quarter mile up bed of Nassayampa River on foot.

Water Supply Domestic water available year round from river. Mill water supply uncertain. Mine makes some water and more could be developed.

Brief History Located about 1893, small shipments of sorted ore. Leased and about four small shipments made about 1935. Small shipment made in 1937. Equipped with test mill in 1938, but no extensive run made, tho still held in readiness to do so.

Special Problems, Reports Filed Cannot depend on shipping ore, but could be worked by two or three men with small mill, by careful consideration of likely places to find ore. Some criteria regarding favored spots for mineral concentration definitely worked out.

Remarks Not recommended for large company. Small group could clean out 95 foot shaft, and develop water, and by drifting from bottom of shaft could determine quickly and economically whether ore goes down. If so, all veins could be developed from same opening.

If property for sale: Price, terms and address to negotiate. Leased at present by one of owners who would forfeit his lease to parties of demonstrated responsibility.

Signed Harold H. Block

N. H. Patchell
Bull. 1st. 2nd.



Billy Boy

REPORTS

OF

BILLY BOY GROUP OF MINING CLAIMS,

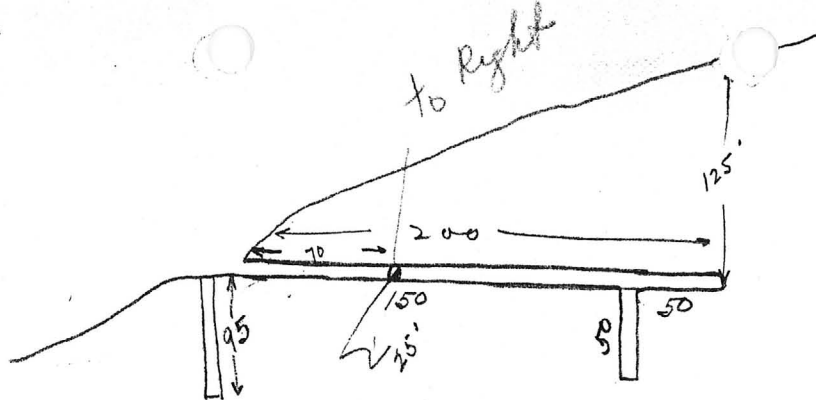
and

THE CHRISTMAS GROUP OF GOLD MINES

(Filed in folders
under "Christmas
Group")

BY

Harrington Blauvelt, M.E.
J. B. Tomlinson, M.E.
Dr. J.S. Templin,
and
E. Block.



BILLY BOY GROUP OF MINING CLAIMS.

The Billy Boy Group consists of four mining claims, three of which are patented. The principal work has been done on the Empire Mine, which consists of a tunnel, on the vein two hundred feet long, the breast of which is about one hundred and twenty-five feet below the surface; a winze fifty feet deep which is one hundred and fifty feet from the mouth of the tunnel, a shaft at mouth of tunnel ninety-five feet deep; all of these workings being in ore which will average fourteen inches in width. It is a continuous shoot of ore without a break.

The vein, aside from the ore, is very large and loose, and can be broken very cheaply. At a point seventy feet from the mouth of this tunnel, a cross-cut has been driven twenty feet toward the foot wall, where another pay streak was encountered. A drift has been run on this pay streak for thirty feet, and is still in ore, this streak is quite small, averaging six inches in thickness only; the ore, however, is continuous. The ore in this thirty foot drift assays from eight to nineteen dollars per ton, the principal value being in gold. It also carries a fair amount of silver.

The three hundred and forty-five feet of work in the main tunnel, winze and shaft on the hanging wall side averages a little better than twenty dollars per ton in the mill. This ore can be sorted easily and cheaply up to fifty or sixty dollars

per ton. Several small lots of this ore have been milled, most of which was taken out while doing development work, and only eight tons of ore have been stoped; which was taken from above the tunnel level.

The ore which was milled has plated from seven to fourteen dollars per ton, in free gold, and the concentrates average sixty-five dollars per ton in gold and silver. When these concentrates were sold, the ore buyer did not allow anything for lead or copper, but it always carried a few dollars in each mineral.

The mouth of the main tunnel on the Billy Boy property is within forty feet of the River, where there is ample water for a large mill for nine months in the year, during some seasons all the year.

A small dam constructed on our own grounds, at a slight expense, would form a reservoir sufficiently large, to supply water to a large mill for three or four months during the very dry season.

This property can be reached within eleven miles of Prescott, the County Seat of Yavapai County, Arizona, but four miles of this route would be by trail. At the present time it is eighteen miles by wagon road from Prescott to the property, and twelve miles by wagon road from Skull Valley Station, on the Santa Fe, Prescott and Phoenix railroad.

There is a wooded section within three miles of the mine, where wood for fuel and other purposes can be obtained. Cord wood is worth five dollars and fifty cents per cord laid down at the mine.

Power can be had from the Arizona Power Company by

Mr. Ed. Block,

Prescott, Arizona.

Dear Sir:

The latest developments on the April Show, which is one of the Christmas Group, shows a vein of pay ore, which has increased from three inches to twelve inches in a distance of only thirty feet from the mouth of the tunnel. The ore extracted from this streak, returned assays as follows:

✓ Gold.....1.42 ozs.
Silver.....8.00 ozs

Total valuation per ton \$33.35.

Presuming that this ore body continues for only thirty feet in length, there would be available at once for milling purposes, in this tunnel, the following amounts of ore.

$\frac{100' \times 60' \times 8''}{15'}$ = 266.6 tons @ \$33.35

per ton of 2000 lbs = \$8,891.11 gross, or
\$7,291.51 net, after deducting \$6.00 per ton
for mining and milling charges, or an average
of \$27.35 per ton, net.

Recent developments upon the New Years Gift claim, in the same group, shows an ore body on the surface twelve inches wide, which has widened to three feet at the seventeen foot point.

This ore body returned an average assay value of Gold 1.12 ozs, Silver 12.1 ozs, or a total tonnage valuation of twenty-nine dollars and thirty-five cents per ton of two thousand pounds. Considering that this ore body continues for thirty feet in length, on each side of the shaft, and one hundred feet in depth, with an average width of two feet, there would be available at once, as

milling ores, the following amount.

$$\frac{100' \times 60' \times 2'}{15'} = 800 \text{ tons @ } 29.35$$

per ton, or \$23,480.00 gross. Less \$6.00 per
ton for mining and milling charges of \$4,800.00
or \$18,680.00 net, or \$23.35 net value per ton.

When the ore bodies exposed by development, in other portions of the mines of this group are taken into consideration, it is apparent at once to any practical mining man, that there is more than sufficient net ore in sight, or available, to more than pay the price asked for both groups of mines, under the conditions above named.

Yours truly,

(Signed) J.S.Templin.

BILLY BOY GROUP OF MINING CLAIMS.

This group comprises three gold lode claims, located on and embracing within their boundary lines, a strong ledge of quartz and Porphyry carrying payable values in Gold, Silver and Copper, with a fair proportion of lead. As located, with joined end lines, they form a continuous area, ranging northerly and southerly in course for three thousand, seven hundred and fifty feet in length, by six hundred feet in width, consisting of approximately fifty-one acres of ground.

There is also a twenty acre placer claim on the Billy Boy, so situated, that about one half of it is embraced within the side lines of one of the lode claims, the other half lying east of and outside of it.

As taken from north to south, the claims are named "THE MIDDLE", "EMPIRE", "FRIELY" the two former being full sized locations, fifteen hundred feet by six hundred feet along the vein, while the latter is but one-half of a claim, being but seven hundred and fifty feet in length by six hundred feet in width.

This property is situated in the Hassayampa Mining District, at a point near the line of the Copper Basin Mining District, on the Hassayampa River, which crosses the property within fifty feet of the main working tunnel.

There is a good County wagon road from the town

of Prescott, the County Seat of Yavapai County, to within three fourths of a mile of the property. The distance is seventeen miles from Prescott by this wagon road. There is also a good road from Skull Valley, a station on the Santa Fe, Prescott and Phoenix Railway, a distance of twelve miles. The property may be reached from Prescott by trail in nine miles. A very good wagon road may be completed to the mines, by connecting with the County road at a cost of about one hundred and fifty dollars. There was a road so constructed once, but the high water in the River destroyed it.

S T R U C T U R E.

The section of country in which these mines lie, consists of a country rock, made up principally of Granite, cut from north to south by dikes of horn blende, schist, syenite and feldsite. To the northwest, there is a large section of porphyry situated on Big and Little Copper Creeks, this is a monzonite porphyry and carries low copper values in the whole mass of stuff.

Accompanying the schist, or lying alongside, are found frequently dikes of porphyry of the feldsite class. It is along the line of contact of these two formations that the mineral veins occur. These carry the gold and silver values, in combination with the metals of lead, copper or iron sulphides or as found at the surface, are contained in the quartz, which is heavily stained with their oxides.

On this property, the vein is found along the contact of a prominent dike of schist and porphyry. The ore-bearing material

exists as shoots along the line of contact, and shows a good width of altered porphyry, strongly mineralized and extending for long distances, along the course of dikes.

DEVELOPMENT.

The principal developments thus far made are shown on the EMPIRE ✓ claim. This is represented by main working tunnel run on the vein, a distance of two hundred and twelve feet. It shows a continuous ore shoot for the entire distance without a break. At a point one hundred and sixty feet in from the mouth a winze is sunk in the level floor to a depth of fifty feet in the ore. Also at mouth of tunnel a shaft is sunk to a depth of ninety-five feet, all the way in ore. During the last twenty-five feet sunk in this shaft, the ore streak was found to be slightly faulted, the displacement being about four feet from its regular course, further sinking will show its continuance along regular lines.

At the surface and over the tunnel, there is some work done, showing as an open cut for ten feet, and a further distance of ten feet under cover. This opening shows a protruding part of the vein, to be from six to ten feet in width, all of which is slightly mineralized.

The payable ore shows persistently along the hanging wall side, and is regular throughout all the openings described, with an average width of fourteen inches. No cross-cutting has thus far been attempted, although the indications point to there being a foot wall streak, similar in character to that of the hanging wall. There is no doubt but that the whole vein material would pay a profit if worked by a mill on the ground.

ORE AND VALUES.

There has been much ore taken out of these workings. A large portion was washed down stream by flood waters in the river; some of it was milled and good results obtained several times. This paid well, being treated by amalgamation and concentration. The amount of free gold saved on the plates amounted to seven to eight dollars per ton, and the concentrates sold to the smelters for sixty-five dollars per ton.

As all of the ore showing or mined from the lower openings is a heavy sulphide, concentrating at the rate of three and one-half into one, it forms a very important item. A test run made at one of the mills, of ten tons, just as it came from the tunnel backs, returned fourteen dollars per ton saved on the plates. There is much of the same ore available for mining now.

The average of the ore exposed, is shown by sampling, to be worth twenty-three dollars and twenty-five cents per ton just as mined from the stopes. The values are in gold and silver, without counting the lead and copper contents. The eight feet in width, as shown at surface above the tunnel, runs three dollars and sixty five cents per ton. It is estimated that there is now open in the mine, and immediately available for treatment, not less than sixty thousand dollars worth of ore.

The main tunnel heading has reached a depth on the vein, under surface outcrop, of one hundred and fifty feet, this with a depth indicated by winze, fifty feet and the shaft, ninety-five feet, with a length of two hundred and twelve feet, averaging

the height over the tunnel at forty-six feet, is what this estimate is based on.

ASSAYS MADE FROM SHAFT AND WINZE ORE
SHOW THE FOLLOWING ORE
VALUES.

Gold, per ton,	\$23.15	Vein above tunnel eight	
Silver, per ton,	10.55	feet in width	
Lead per ton,	1.70	Gold,	\$3.10
Copper, per ton,	5.00	Silver,	.55
Total	<u>\$40.40</u>	Total	<u>\$3.65</u>

M I L L R U N .

Eight tons stoped from back of tunnel, sent to stamp mill.	
Gold saved on the plates.....	\$7.00 a ton
Concentrates, 4,400 lbs, saved and shipped.....	65.00 a ton

This shows a total recovery of \$19.50 per ton without including the copper and lead values. As there was some loss in the tailings, this would check out with the statement made above, \$23.25 per ton.

IMPROVEMENTS AND ADVANTAGES.

There is a very good frame house on the ground, which would furnish comfortable quarters for a small crew of miners. The tunnel is equipped with a track of "T" rail and car. The Hassayampa River flows directly by the mouth of tunnel, and will supply water for a mill of large capacity, during the dry season, and for most of the year would afford power.

The wagon roads are all good, and the climate is no drawback in anyway. Fuel may be obtained near at hand at reasonable cost per cord. The vein is large and soft, and no country rock would have to be broken in mining the ore for a mill of large

capacity. Labor is plentiful. Mining supplies may be bought in Prescott at as reasonable figures as any other place in the southwest country. The mining district is known as a producer of good grade gold ore lying in extensive bodies. The BILLY BOY GROUP is among the best, and commends itself as a good proposition for mining and milling.

(Signed) ~~Tomlinson and Co.~~

~~By, J. B. Tomlinson, E.M.~~

Tomlinson & Co
By E. J. Tomlinson E.M.

Prescott, Arizona, April 8th, 1912.

Mr. Ed. Block,

Prescott, Arizona.

Dear Sir:

Having been asked by you certain questions regarding your BILLY BOY GROUP OF MINES, and having seen the property, I would state that the conditions of operating this property will be the same practically as those governing the Christmas Gift Group. While the Billy Boy contains more sulphide, being lower in altitude than the Christmas and also contains more zinc blende, also copper pyrite, it is higher grade also and would be milled by plating and concentrating, washing out the zinc and quartz making high grade concentrates running up to \$75.00 a ton. If the zinc blende occurs in sufficient quantity to warrant saving it the

tails can be reconcentrated saving the zinc for shipment to Kansas Smelters. By utilizing a ten stamp mill for both properties you would insure a steady producing proposition for a long time after developing. Some of this zinc ore carrying copper pyrite has assayed over four and one half ounces in gold. While the vein in some places has assayed according to some samples I have taken, over two ounces in gold, besides some silver. Ore can now be sorted out that will pay for shipment, say \$50.00 ore. Like the Christmas, the group requires development.

Yours truly,

(Signed) Harrington Blauvelt, M.E.

See folder "Bible Boy Group"

✓
THE CHRISTMAS GROUP OF GOLD MINES.

This group of mines is situated ten miles from Prescott, Arizona, upon the Hassayampa Creek, in the Hassayampa Mining District, and is in a southerly direction from that city.

The property can be reached by wagon road, known as the Copper Basin and Catocin, to where it enters the Hassayampa Creek going to the Climax camp, thence up the Creek half a mile to the mouth of Board Creek, an eighteen mile trip. Or by team to old Mescal Mill site, six miles south of Prescott, on the Hassayampa, thence by horse back four miles to the property. Or by wagon road from Skull Valley railroad station, a distance of twelve miles.

The property consists of four claims, three on the main vein and one side claim on the west, called the DANDY. The Hassayampa Creek runs parallel with this property, in a southerly direction, and only from two hundred to five hundred feet distant. Board Creek coming into the Hassayampa from the west is the southern limit, while Big Copper Creek, also from the west, cuts across the property; the New Years Gift claim extending six hundred feet further north. Several other smaller gulches cross the property.

From the slopes of these gulches, tunnels have been driven upon the vein. While several small cross-cuts to the vein, and numerous shallow cuts and small shafts have been made, much of this work is useless, done for assessment work by the original locators, and failed to be done upon the vein, or did not reach it.

Nevertheless the development upon the group shows a property of considerable merit. The shoot that from a point sixty feet in the upper tunnel 'A' on the Christmas Gift Claim extends southerly to the sixty foot tunnel 'D' on the April Shower, is about five hundred and fifty feet in length. Later work on this April Shower tunnel 'D' shows fine ore in the face. The width of the ore of the vein varies, running from ten inches to over thirty in thickness with an average of eighteen inches. The tunnel 'D' on the April Shower runs northward and has in the face two streaks of ore; one on the hanging wall side running twelve dollars per ton, twelve inches thick, the other on the foot wall, six to twelve inches, running up to thirty-three gold and silver, of which eight dollars is silver. This streak shows some sulphide (iron pyrite) that sorted out will run over sixty dollars a ton. The tunnel 'D' is over four hundred feet lower in altitude. Extending this tunnel northward it will pass fifty feet, therefore, under the Christmas lower tunnel 'C', one hundred feet under the cross-cut 'B' run to vein from the west from small gulch marked on map, and one hundred and fifty feet under upper tunnel 'A'; (see vertical section on map). In tunnel 'C' the ore is full length and averages \$16.00 a ton. In its face a cross-cut was driven towards hanging wall lately which shows streaks of ore showing pyrite, galena and zinc some fifteen feet wide and no hanging wall yet. The fissure shows considerable shearing so there are many small seams and streaks of ore running parallel. A small cross-cut into the hanging wall of tunnel 'D', April Shower, showing the same. The

The ore in cross-cut 'B' about thirty inches wide runs some thirty-three dollars gold and silver. In the tunnel 'A', the ore has pinched out in the face though it may be in hanging wall side as vein is wide and streaks of ore run into the hanging wall near face. Northerly from this tunnel, vein crops five feet thick and at shaft forty-two feet deep there is that width of vein filling with twelve inches of ore running eighteen dollars a ton in bottom. All this ore is oxidized or surface ore and just beginning to show sulphides in Tunnel 'D' and would be a plating and concentrating proposition. While it shows a little lead in spots and some little zinc there is not enough to consider. The lead will go into the concentrates and help make them valuable; the little zinc washed out.

Upon the New Years Gift tunnels have been driven both north and south, though those driven North are caved in, and were not accessible when I was there. The lower tunnel, however, has sulphide ore of good value coming in at face. The vein at this point appears in a contact, between a Rhyolite dike and diorite, and shows a width banded some sixteen feet or more: in fact, the rhyolite is banded with streaks of ore so it is impossible to state the full width of the vein. In the big open breast of the cut, on the northerly end of this property, assays of small streaks have given ten dollars per ton. This was surface croppings. This vein promises to develop into something much larger than the shoot on the Christmas Gift, as the highly decomposed and mineralized character of the dike shows great

activity in circulating mineral waters. A cross-cut run from the tunnel just south of Copper Creek shows some seventeen feet of a silicious porphyry, almost quartz porphyry, speckled with pyrite, assays of this entire width have run one to two ounces silver, and one to three dollars gold. The hanging wall has not been reached yet.

Water runs the year round in the Hassayampa. Wood for fuel, timbers and lagging, are two or three miles distant, while later a road built down the Hassayampa Creek would bring it close to Prescott, so as to use gasoline for fuel: later electric power can be had from the Power Company.

Adjacent, between this property and the creek lies the Billy Boy group, a parallel vein covered by four claims, containing sulphide ore of high grade.

Being lower in altitude than the other veins, it is nearly all sulphide ore, and as the pyrite carries good values, it is somewhat indicative of what the Christmas group will do, when sulphides are reached.

By putting a small hoist in on the Christmas Gift,
and a mill following, it would pay for itself in six months, as
as the continuous shoot of ore shown, will furnish ore for a
long time.

Since writing the above and making some additions warranted by new development, I have been asked some questions regarding this property further which I will answer as well as the conditions of the property will permit.

No ore has been milled or shipped from this property. It is virgin, therefore, no data regarding milling, etc., is available. There is some silver with the surface oxidized ore. This will not save with the gold on plates, but in the sulphides pyrite and galena this silver will go into the concentrates. No measurements of the ore in sight is possible because it is not 'blocked'. One can only estimate; thus assuming the shoot will be close to five hundred or five hundred and fifty feet long, from the work done on the April Shower and Christmas, it will not be less than sixteen inches thick, and will average between twenty and twenty-two dollars a ton, with better ore showing when sulphides are reached. Thus one can estimate a block above the line of tunnel 'B' to tunnel 'A' as having an average height of say seventy five feet by five hundred feet by sixteen inches, which would give about thirty-five hundred tons of ore. Then the shoot at shaft, forty-two feet deep near the boundary line of Christmas Gift and New Years Gift, while ore from surface to bottom the length of shoot has not been determined, so no estimate can be made. The altitude is about thirty-five hundred feet. Nearest reduction works are at Humboldt, this County, for copper and iron pyrite concentrates, while the lead smelter at Needles, California, buys all kinds, lead also. The wagon freight will be four dollars and fifty cents a ton to Prescott. Rail freight to Humboldt one dollar and twenty cents a ton, and to Needles, California, three dollars and fifty cents to four dollars and fifty cents. Round timbers will cost twelve cents a running foot at mine. Lagging six inches by five feet, ten cents each. Square timber, plank

and lumber of various kinds, about forty dollars a thousand feet. No heavy timbering required. Simply stulls for lagging, stopes and for ore chutes.

Property has no tools or equipment upon it. Water will be gotten in property to some extent in fifty feet from bottom of tunnel 'D'. This will increase with depth to about fifteen thousand to twenty-five thousand gallons in twenty four hours. The water question cuts no figure -- there is just about sufficient in these mines with depth to operate mills five to twenty stamps by conserving it, using it over-- if not the Hassayampa river will furnish all required. No heavy flows of water to pump are found in these mines. Mining cost will be about three dollars and fifty cents a ton. No dams, extensive pipe lines, or road work will be required. While by present wagon road the distance from Prescott to mines is about eighteen miles, the County is considering the question of building a road down the Hassayampa River five miles which will put the property within twelve miles of railroad with no heavy grades.

Water, timber, fuel, transportation, (both wagon and rail) and smelter treatment are all favorable, while the ore is a simply plating and concentrating proposition. With a five stamp mill, plates and Wilfley tables for concentrating it can be milled for two dollars and fifty cents a ton; with a ten stamp mill for one dollar and fifty cents a ton, using distillate gasoline for fuel. Now the power company will build a branch line down by these mines whenever the mines of the district will pay for the branch of seven or eight miles: The power company giving them

by constructing a line about seven miles in length, the price of electricity being very reasonable per horse power.

This property alone will warrant the building of a five stamp mill at the present time, and can be developed within a few months into a property which will warrant a mill of large capacity.

I also own the Christmas Group, consisting of four claims, which side lines the Billy Boy property. There is between three hundred and four hundred feet of development work on this group, about two hundred and fifty feet of this work being on the ledge, the balance of the work being cross-cuts. The work on the ledge is all in ore.

The pay streak in the Christmas Group is somewhat larger than in the Billy Boy Group, but the general average of the ore is not quite as high. ¹²⁻¹⁵

United States patents for two of the claims in the Christmas Group have been ^{procured} applied for. This group will also warrant the building of a five stamp mill; as both groups together under the present development will more than supply a ten stamp mill, with all the ore necessary to keep it running continuously.

There is room in these properties to work a crew of twenty to thirty men to good advantage on ore. The workings are mostly tunnels on the ledge and a large crew could be worked to advantage in up-raising and stoping above the tunnel levels, and in sinking winzes.

Respectfully yours,

(Signed) Ed Block.