



## **CONTACT INFORMATION**

Mining Records Curator  
Arizona Geological Survey  
1520 West Adams St.  
Phoenix, AZ 85007  
602-771-1601  
<http://www.azgs.az.gov>  
[inquiries@azgs.az.gov](mailto:inquiries@azgs.az.gov)

The following file is part of the

Arizona Department of Mines and Mineral Resources Mining Collection

## **ACCESS STATEMENT**

These digitized collections are accessible for purposes of education and research. We have indicated what we know about copyright and rights of privacy, publicity, or trademark. Due to the nature of archival collections, we are not always able to identify this information. We are eager to hear from any rights owners, so that we may obtain accurate information. Upon request, we will remove material from public view while we address a rights issue.

## **CONSTRAINTS STATEMENT**

The Arizona Geological Survey does not claim to control all rights for all materials in its collection. These rights include, but are not limited to: copyright, privacy rights, and cultural protection rights. The User hereby assumes all responsibility for obtaining any rights to use the material in excess of "fair use."

The Survey makes no intellectual property claims to the products created by individual authors in the manuscript collections, except when the author deeded those rights to the Survey or when those authors were employed by the State of Arizona and created intellectual products as a function of their official duties. The Survey does maintain property rights to the physical and digital representations of the works.

## **QUALITY STATEMENT**

The Arizona Geological Survey is not responsible for the accuracy of the records, information, or opinions that may be contained in the files. The Survey collects, catalogs, and archives data on mineral properties regardless of its views of the veracity or accuracy of those data.

PRINTED: 11/27/2002

ARIZONA DEPARTMENT OF MINES AND MINERAL RESOURCES AZMILS DATA

PRIMARY NAME: BIG TOAD

ALTERNATE NAMES:

MARICOPA COUNTY MILS NUMBER: 639

LOCATION: TOWNSHIP 8 N RANGE 2 E SECTION 34 QUARTER NE  
LATITUDE: N 33DEG 59MIN 50SEC LONGITUDE: W 112DEG 08MIN 17SEC  
TOPO MAP NAME: NEW RIVER - 7.5 MIN

CURRENT STATUS: UNKNOWN

COMMODITY:

COPPER

IRON HEMATITE

BIBLIOGRAPHY:

ADMMR BIG TOAD MINE FILE

NEW RIVER QUADRANGLE  
ARIZONA

7.5 MINUTE SERIES (TOPOGRAPHIC)

FLAGSTAFF 104 MI.  
BLACK CANYON 5.1 MI.

112°07'30"  
34°00'

392 10'

393

394 430 000 FEET

1 090 000  
FEET

3762

T. 8 N.

T. 7 N.

3761

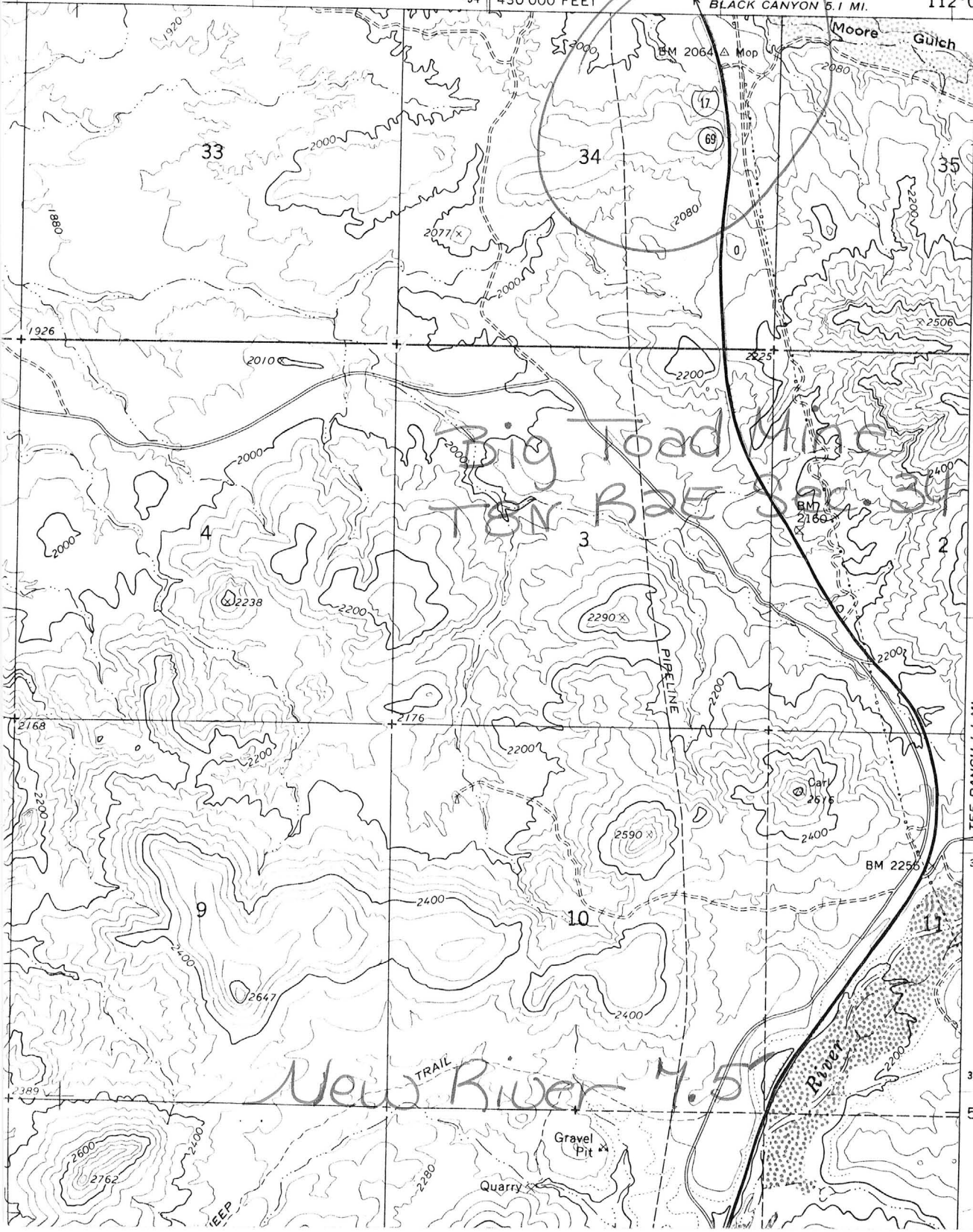
3760

TEE RANCH 1.1 MI.

3759

3758

57'30"



# DEPARTMENT OF MINERAL RESOURCES

STATE OF ARIZONA

## FIELD ENGINEERS REPORT

Mine Big Toad Mine

Date December 30, 1957

District Moore's Gulch Maricopa Co.

Engineer L. A. Smith

Subject: Owners Report

Location: Sec. 34, T 8 N, R 2 E, 5 miles south of Rock Springs in Moore's Canyon.

Owner: C. E. Irle, 8502 North Central, Phoenix, Arizona

Claims: One

Work: Adit in 35 feet.

Geology: The mine lies in a strong north-south shear zone in sericite schist. The shear is about 35' wide. West of the shear is a dike of indetermined composition, but which appears to be a diabase which has been heavily chloritized. The east side of the shear follows a strong vertical wall, but the west side is not as definite. Between the dike and the shear is a 6 foot band of highly kaolinized and bleached schist-limonite and carries up to 0.6% copper which is probably cuprite impregnated into the iron oxides. The shear does not cross the schist laminae, but has been traced for a long distance.

The owner proposes to drill the shear, to gain 125 feet of elevation. Near by in an old mine (name unknown) black coated chalcopryrite and pyrite were encountered.

DEPARTMENT OF MINERAL RESOURCES

STATE OF ARIZONA

FIELD ENGINEERS REPORT

Mine

*Big Toad Mine*

Date

*12-30-57*

District

*1*

Engineer

*Owner's Report*

Subject:

